



# December 2023 Distributed Generation Survey Results

---

*Distributed Generation Forecast  
Working Group*

Tim Costa

LOAD FORECAST ANALYST, SYSTEM PLANNING



# DECEMBER 2023 PHOTOVOLTAIC (PV) SURVEY RESULTS



# Determining Cumulative PV Totals

## *December 2023 Distribution Owner Survey Data*

- ISO requested distribution owners to provide the total nameplate of all individual PV projects (in MW<sub>AC</sub>) that is already installed and operational within their respective service territories as of December 31, 2023
  - PV projects include FCM, EOR, and BTM PV projects
- The following Distribution Owners responded:

CT	CL&P, CMEEC, UI
ME	CMP, Versant
MA	Braintree, Chicopee, Reading, National Grid, NSTAR, Shrewsbury, Unitil, WMECO
NH	Liberty, NHEC, PSNH, Unitil
RI	Rhode Island Energy
VT	Burlington, GMP, Stowe, VEC, VPPSA, WEC

- Thank you to all respondents for providing timely information
- Based on respondent submittals, installed and operational PV resource totals by state and distribution owner are listed on the next slides



# December 2023 Cumulative PV Totals

## State-by-State

The table below reflects statewide aggregated PV data provided to ISO by regional Distribution Owners. The values represent installed nameplate as of 12/31/23.

State	Installed Capacity (MW <sub>AC</sub> )	No. of Installations
Massachusetts*	3,712	179,362
Connecticut	1,091	91,290
Vermont*	507	21,179
New Hampshire	244	21,234
Rhode Island	400	22,769
Maine	588	11,506
<b>New England</b>	<b>6,542</b>	<b>347,341</b>

\* Includes values based on MA SREC data or VT SPEED data

# December 2023 Cumulative PV Totals (1 of 2)

## *Summary of Distribution Owner PV Data*

State	Utility	Installed Capacity (MW <sub>AC</sub> )	No. of Installations
CT	Connecticut Light & Power	869	69,543
	Connecticut Municipal Electric Energy Co-op	13	7
	United Illuminating	208	21,740
	<b>Total</b>	<b>1,091</b>	<b>91,290</b>
MA	Braintree Electric Light Department	6	50
	Chicopee Electric Light	13	51
	Unitil (FG&E)	52	3,162
	National Grid	1,923	96,614
	NSTAR	1,144	59,090
	Reading Municipal Lighting Plant	9	283
	Shrewsbury Electric & Cable Operations	7	156
	SREC I	54	589
	SREC II	97	1,672
	Western Massachusetts Electric Company	408	17,695
	<b>Total</b>	<b>3,712</b>	<b>179,362</b>
ME	Central Maine Power	517	9,816
	Versant*	71	1,690
	<b>Total</b>	<b>588</b>	<b>11,506</b>

\* Does not include installations in Maine Public District

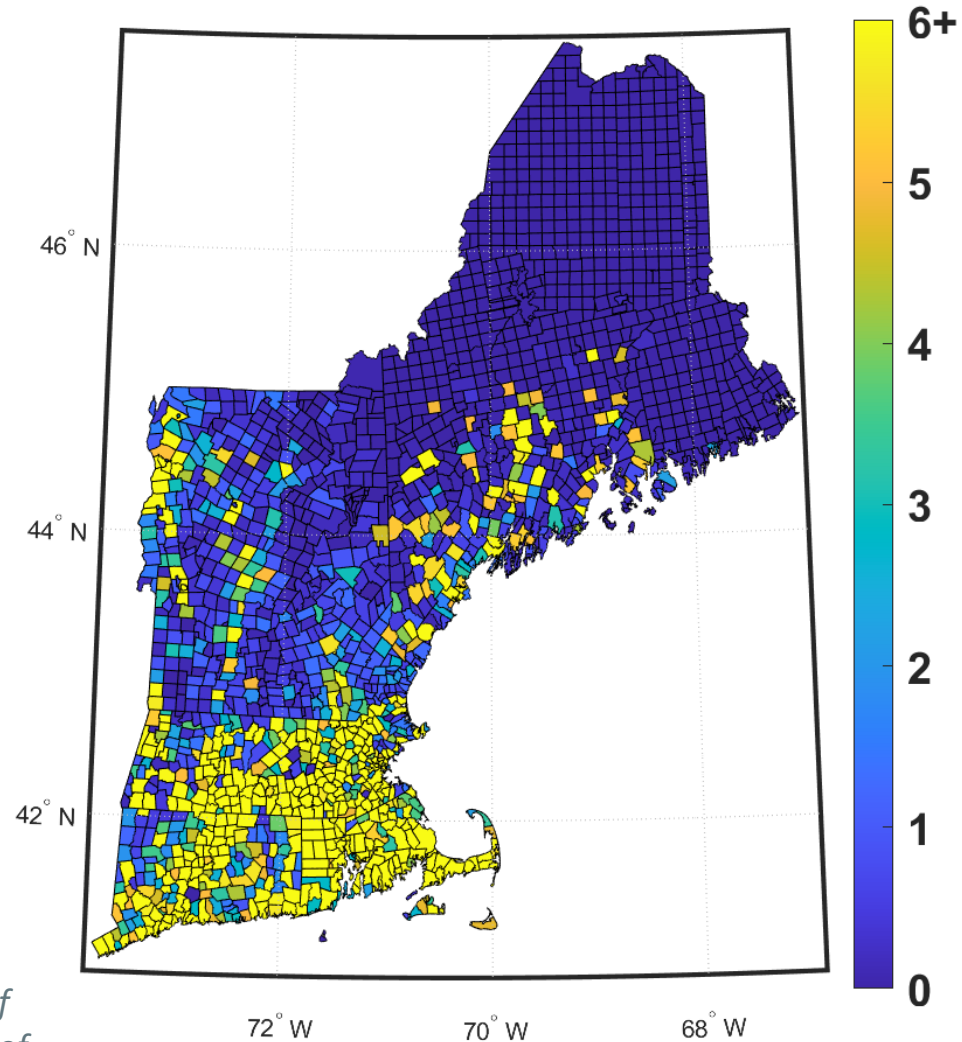
# December 2023 Cumulative PV Totals (2 of 2)

## *Summary of Distribution Owner PV Data*

State	Utility	Installed Capacity (MW <sub>AC</sub> )	No. of Installations
NH	Liberty Utilities	20	1,550
	New Hampshire Electric Co-op	22	1,950
	Public Service of New Hampshire	179	15,518
	Unitil (UES)	23	2,216
	<b>Total</b>	<b>244</b>	<b>21,234</b>
RI	Rhode Island Energy	400	22,769
	<b>Total</b>	<b>400</b>	<b>22,769</b>
VT	Burlington Electric Department	9	409
	Green Mountain Power	418	16,326
	Stowe Electric Department	3	138
	Vermont Electric Co-op	47	2,609
	Vermont Public Power Supply Authority	22	829
	Washington Electric Co-op	8	868
	<b>Total</b>	<b>507</b>	<b>21,179</b>
<b>New England</b>		<b>6,542</b>	<b>347,341</b>

# Installed PV Capacity as of December 2023

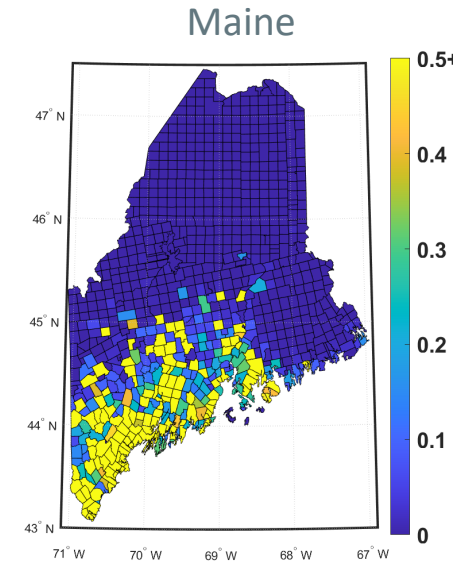
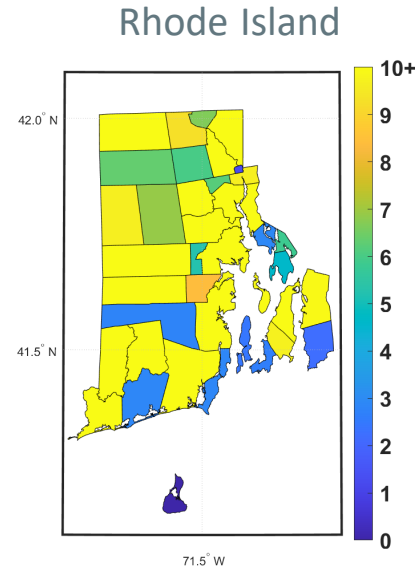
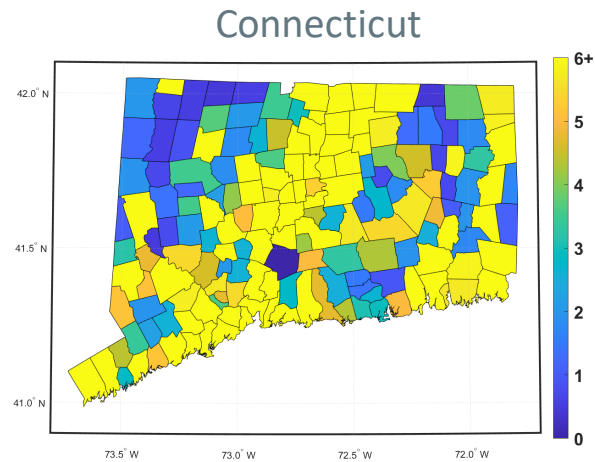
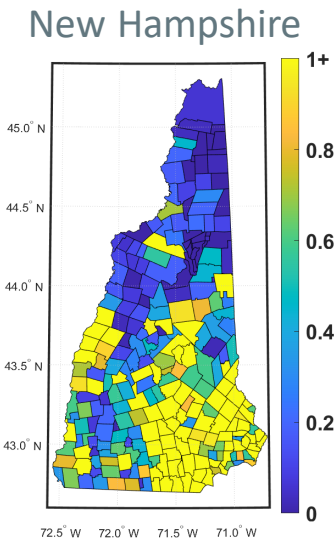
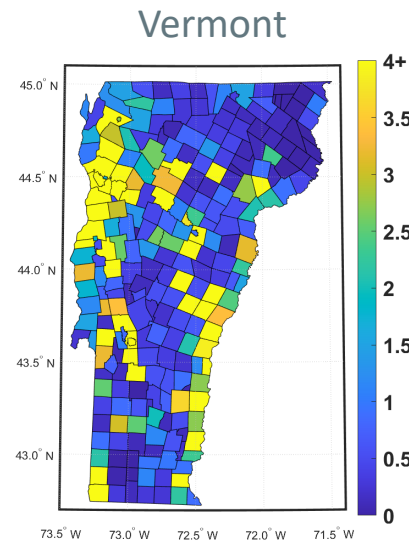
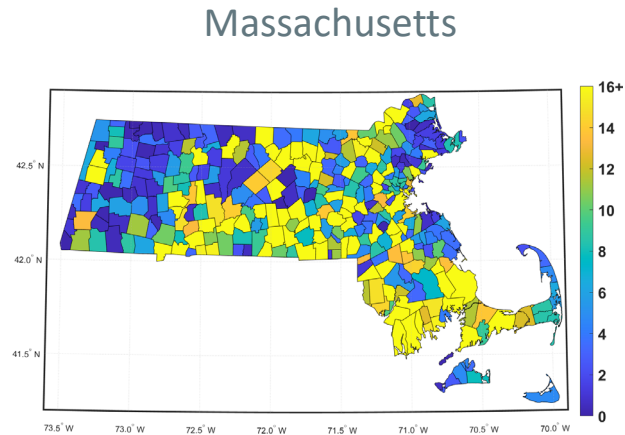
## *Regional Heat Map*



*Note: Legend to the right of heat map shows color scale of nameplate megawatts per town*

# Installed PV Capacity as of December 2023

## State Heat Maps



*Note: Legend to the right of each state plot shows color scale of nameplate megawatts per town*

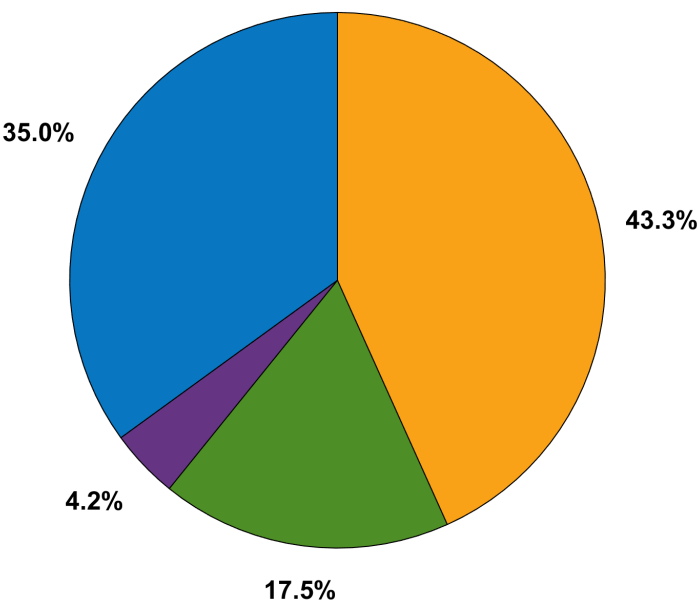


# Installed PV Capacity as of December 2023

ISO-NE by Size Class

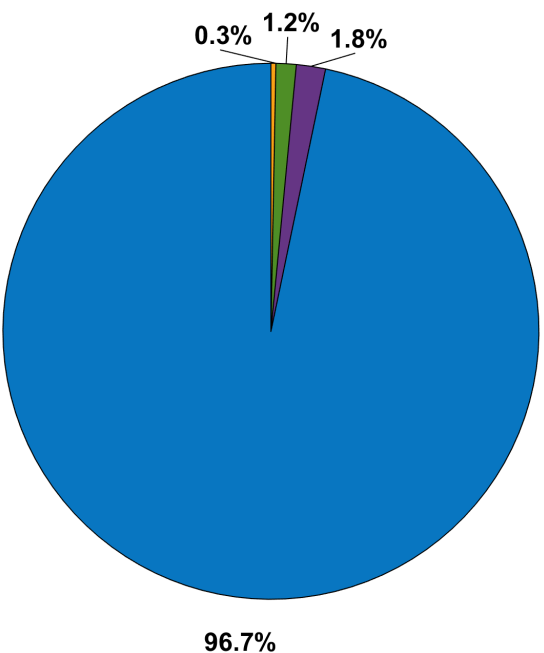
Installed Capacity (MW<sub>AC</sub>)

Total = 6,542 MW<sub>AC</sub>



Number of Sites

Total = 347,341



■ <25kW ■ 25kW-<100kW ■ 100kW-<1000kW ■ >=1000kW

# Questions

