

Attachments 1 - 9

Interpool Transmission Facilities

Effective Date: December 6, 2023
Review by Date: December 6, 2025

Table of Contents

Attachment 1 - Interpool Transmission Facilities, NEW YORK - NEW ENGLAND2

Attachment 2 - Interpool Transmission Facilities, NEW YORK - NEW ENGLAND3

Attachment 3 - Interpool Transmission Facilities, NEW BRUNSWICK - NEW ENGLAND.....4

Attachment 4 - Interpool Transmission Facilities, NEW BRUNSWICK - NEW ENGLAND.....5

Attachment 5 - Interpool Transmission Facilities, HYDRO QUEBEC TRANSENERGIE -
 NEW ENGLAND6

Attachment 6 - Interpool Transmission Facilities, HYDRO QUEBEC TRANSENERGIE -
 NEW ENGLAND7

Attachment 7 - Inter-LCC Transmission Facilities8

Attachment 8 - Inter-LCC Transmission Facilities, INTER - COMPANY WORK.....9

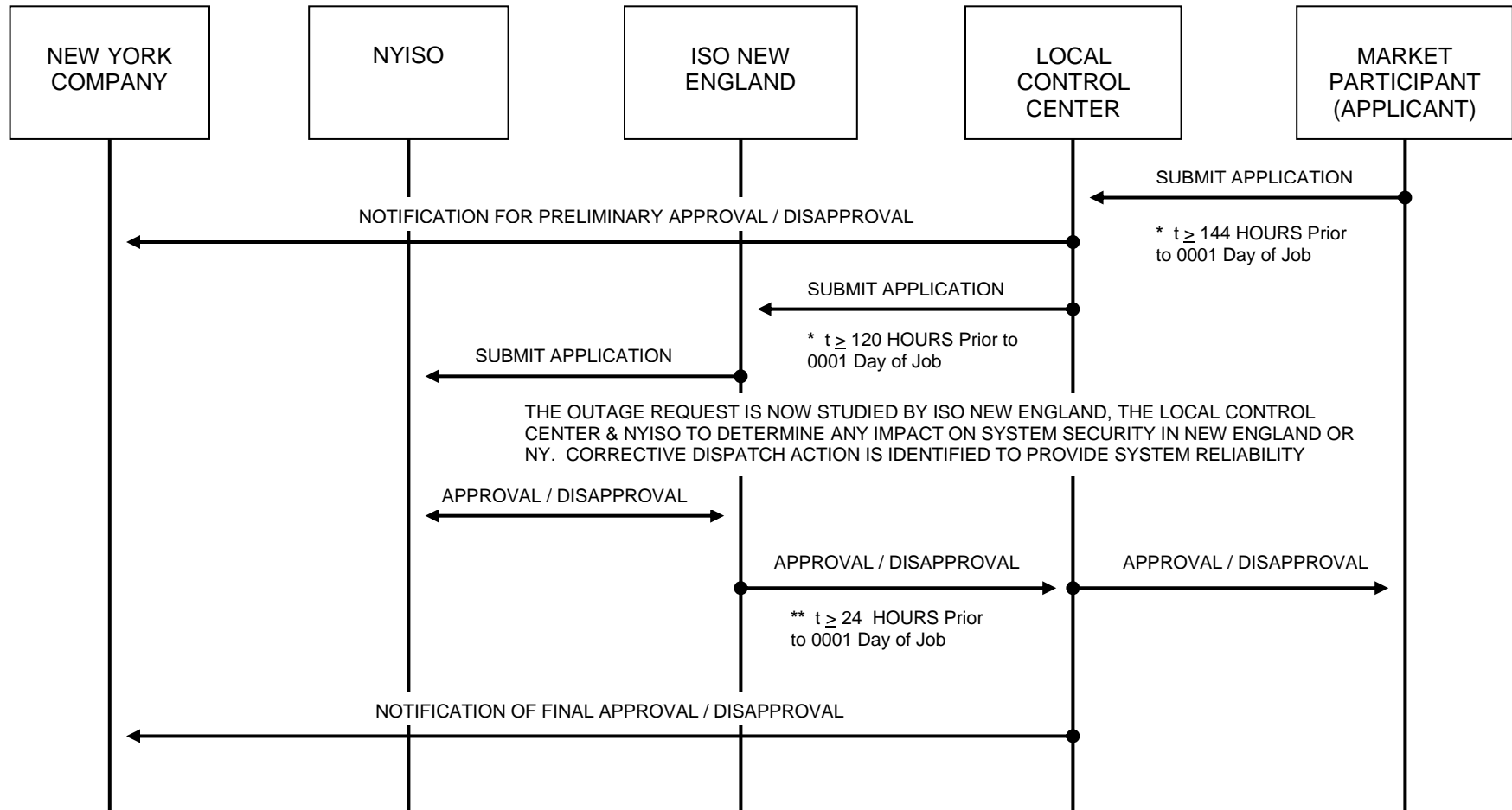
Attachment 9 - Inter-LCC Transmission Facilities, INTER - COMPANY WORK.....10

OP-3 Attachments 1 - 9 Revision History.....11

*This document is controlled when viewed on the ISO New England Internet web site. When downloaded and printed, this document becomes **UNCONTROLLED**, and users should check the Internet web site to ensure that they have the latest version.*

Attachment 1 Interpool Transmission Facilities, NEW YORK - NEW ENGLAND

NEW ENGLAND WORK TRANSMISSION OUTAGE COORDINATION – ADVANCE NOTICE MAINTENANCE APPLICATIONS



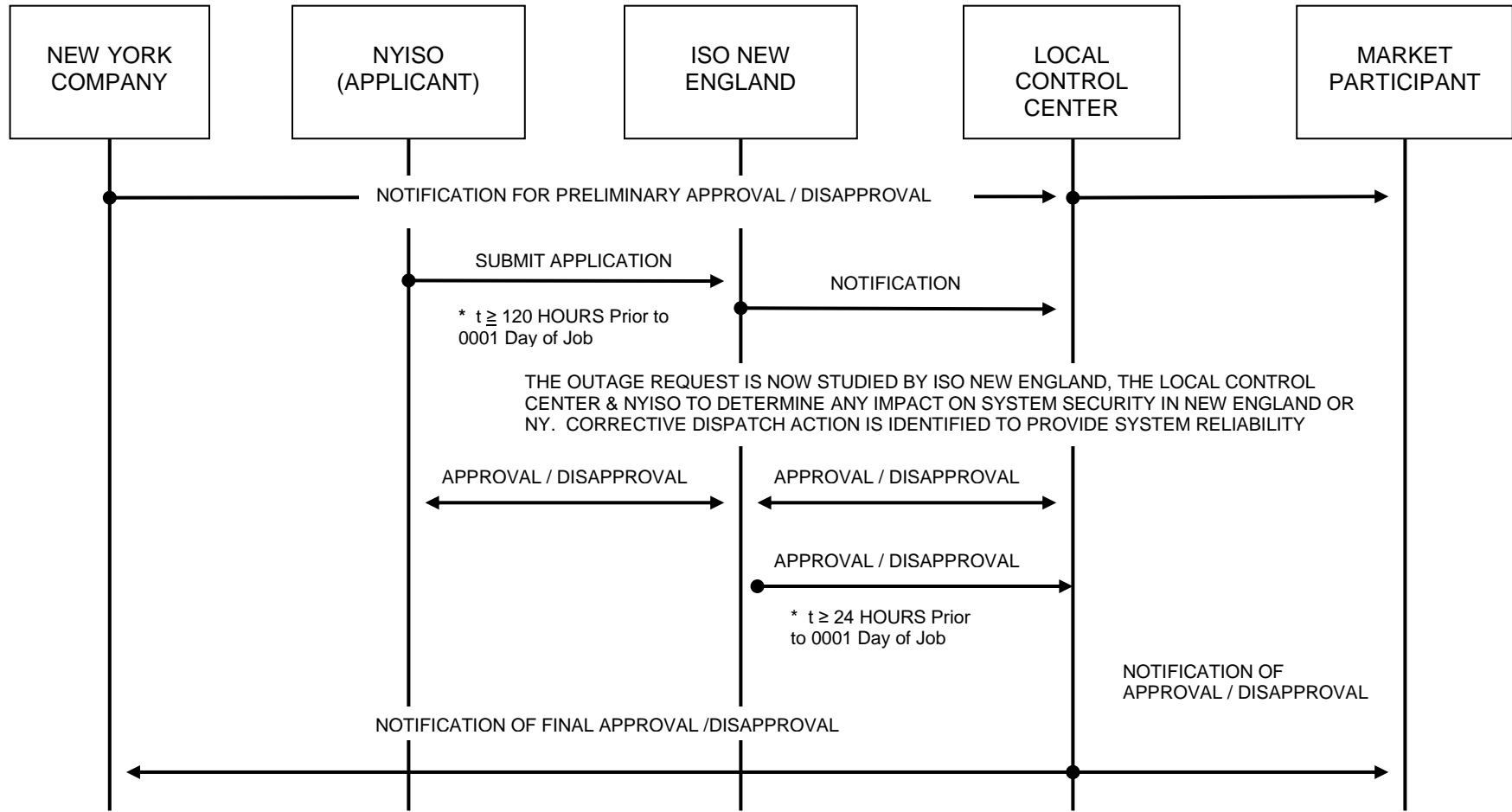
* Represents number of hours prior to 0001 the outage start day. Time may vary with the day of the week as outlined in Local Control Center procedures.

** Represents number of hours prior to 0001 the outage start day as outlined in OP-3.

NOTE: if an application is disapproved at any point in this process, a new application is submitted to schedule the work on an alternate date.

Attachment 2 Interpool Transmission Facilities, NEW YORK - NEW ENGLAND

NEW YORK WORK TRANSMISSION OUTAGE COORDINATION – ADVANCE NOTICE MAINTENANCE APPLICATIONS

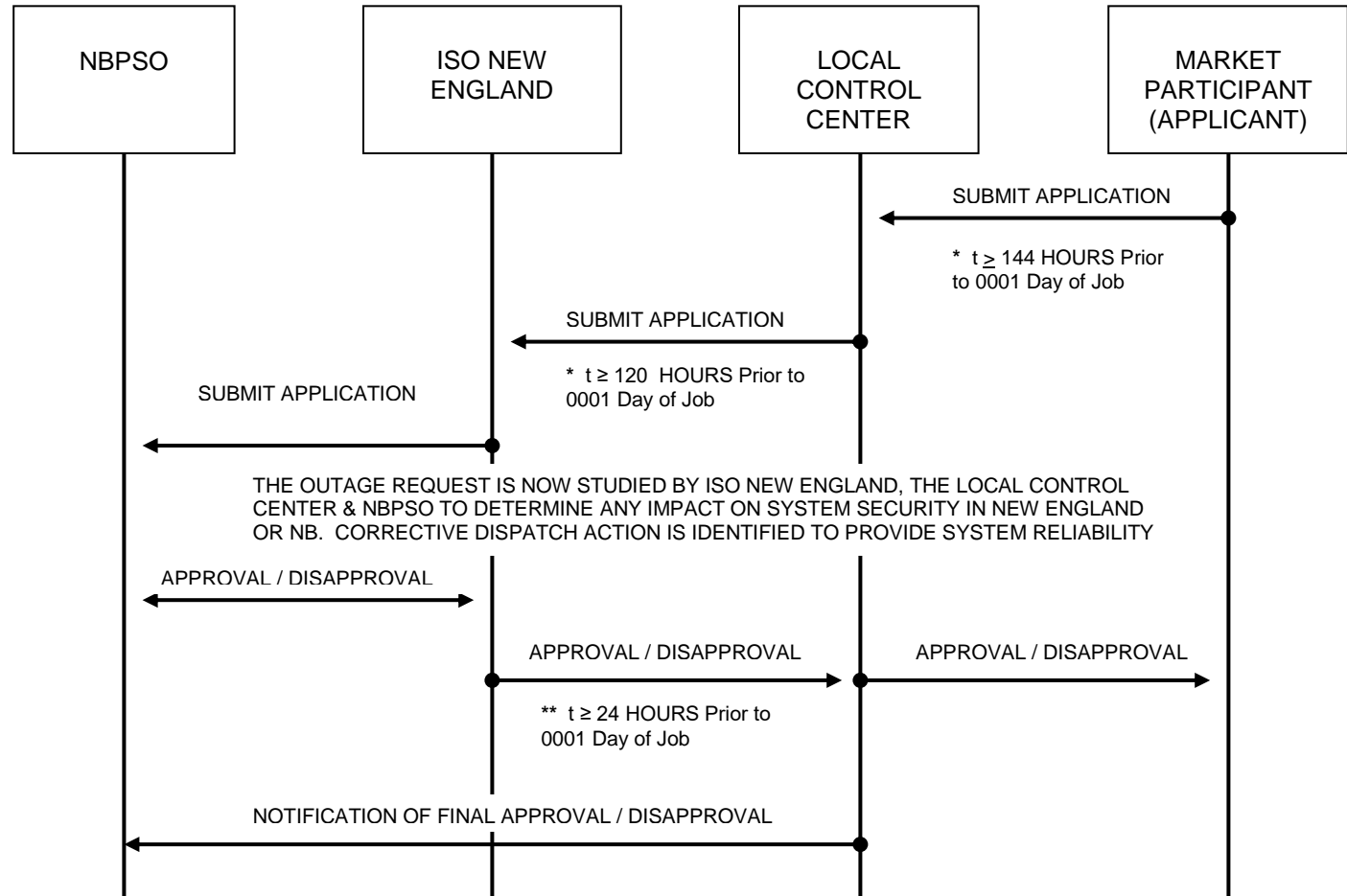


* Represents number of hours prior to 0001 the outage start day as outlined in OP-3.

NOTE: If an application is disapproved at any point in this process, a new application is submitted to schedule the work on an alternate date.

Attachment 3 Interpool Transmission Facilities, NEW BRUNSWICK - NEW ENGLAND

NEW ENGLAND WORK TRANSMISSION OUTAGE COORDINATION - ADVANCE NOTICE MAINTENANCE APPLICATIONS



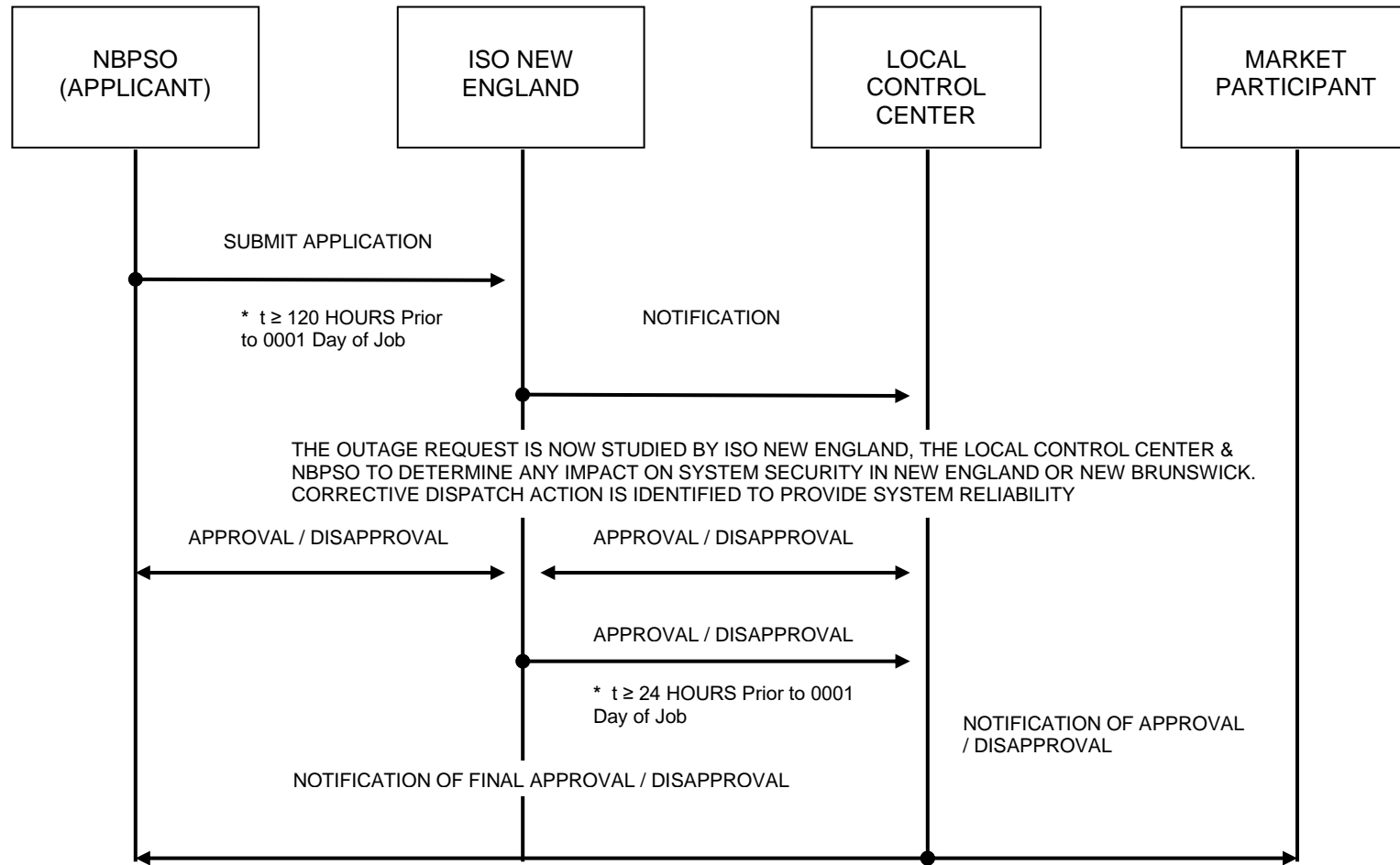
* Represents number of hours prior to 0001 the outage start day. Time may vary with the day of the week as outlined in Local Control Center procedures.

** Represents number of hours prior to 0001 the outage start day as outlined in OP-3.

NOTE: if an application is disapproved at any point in this process, a new application is submitted to schedule the work on an alternate date.

Attachment 4 Interpool Transmission Facilities, NEW BRUNSWICK - NEW ENGLAND

NEW BRUNSWICK WORK TRANSMISSION OUTAGE COORDINATION - ADVANCE NOTICE MAINTENANCE APPLICATIONS

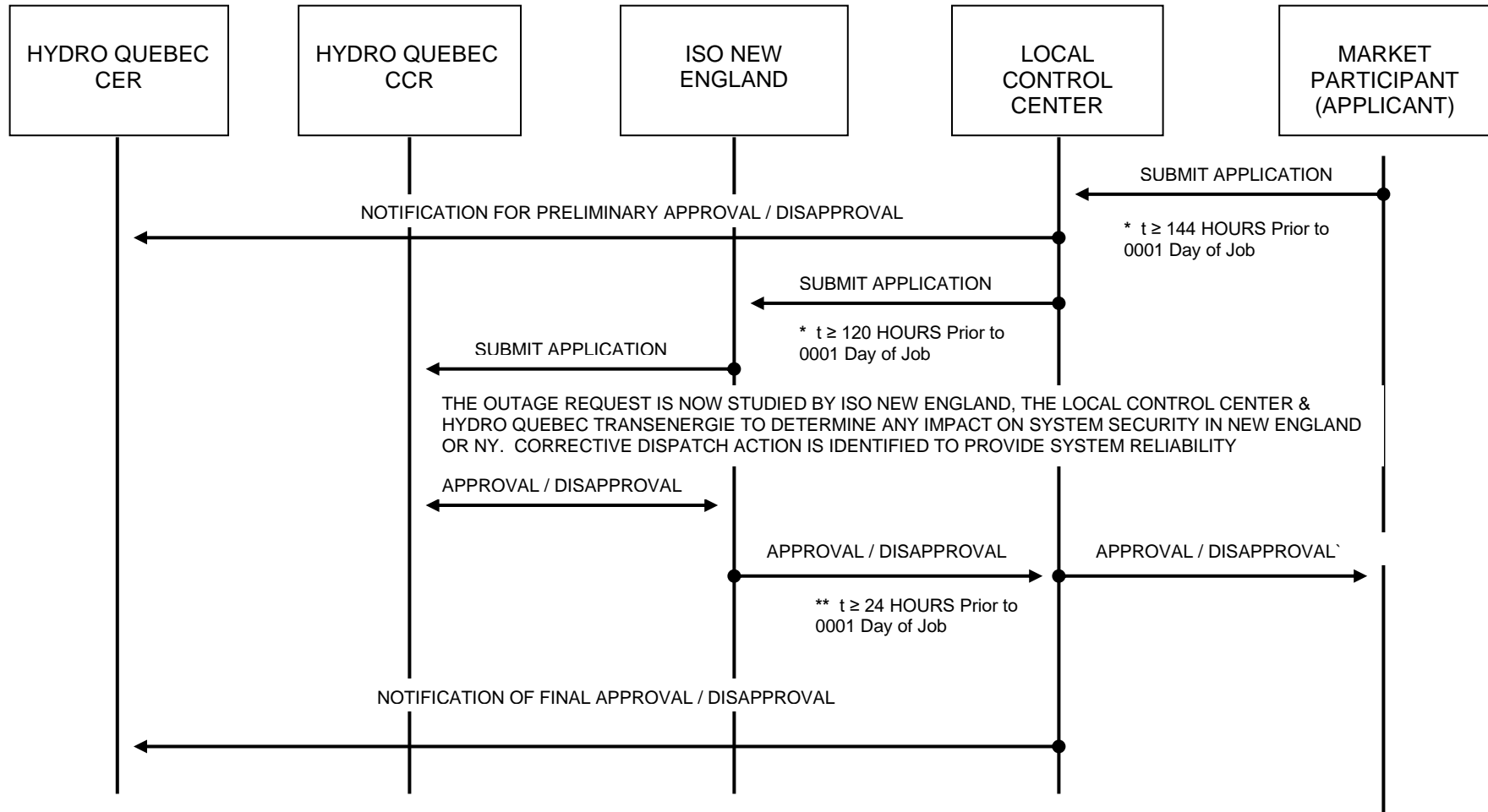


* Represents number of hours prior to 0001 the outage start day as outlined in OP-3.

NOTE: If an application is disapproved at any point in this process, a new application is submitted to schedule the work on an alternate date.

Attachment 5 Interpool Transmission Facilities, HYDRO QUEBEC TRANSENERGIE - NEW ENGLAND

NEW ENGLAND WORK TRANSMISSION OUTAGE COORDINATION - ADVANCE NOTICE MAINTENANCE APPLICATIONS



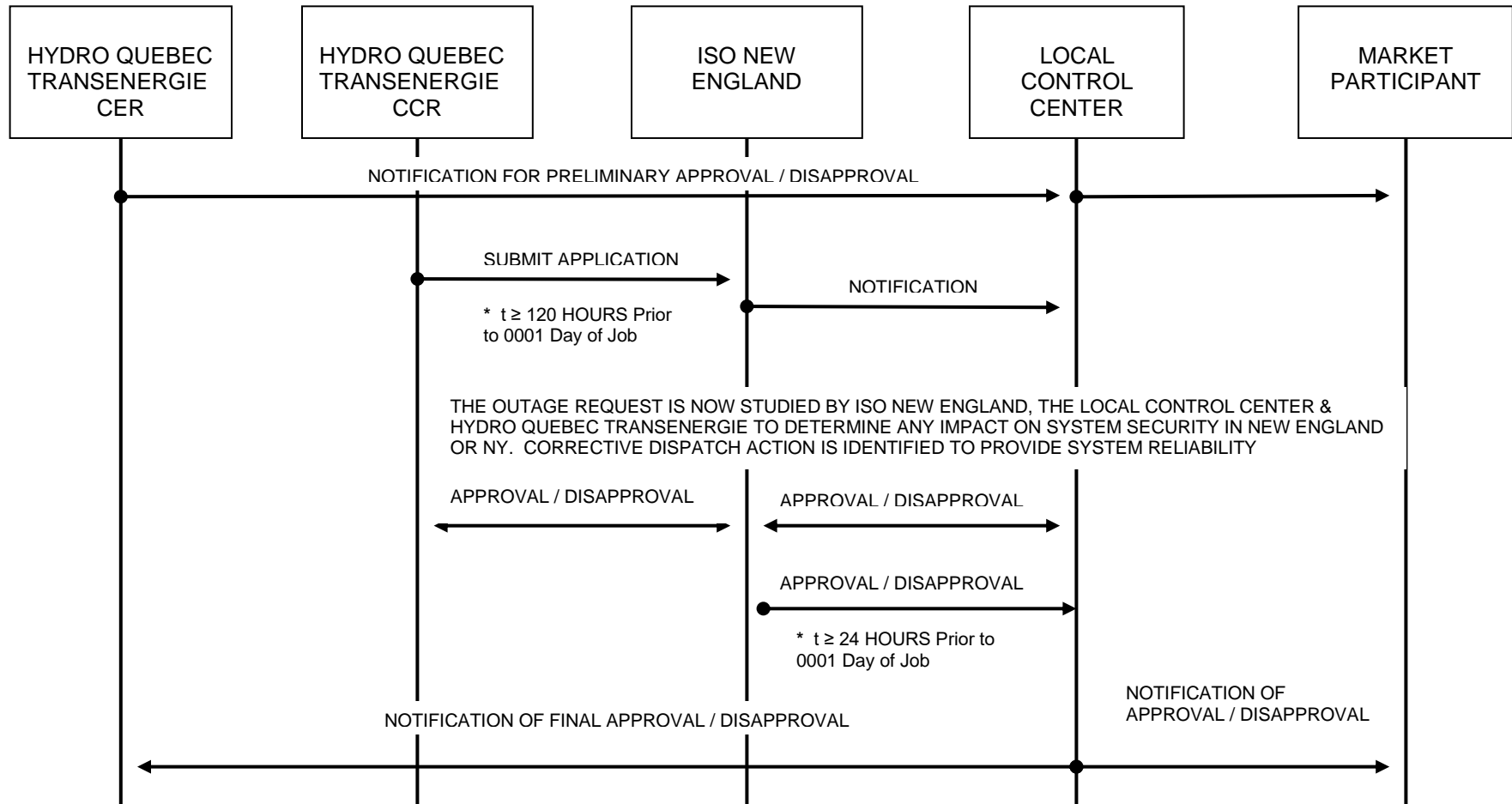
* Represents number of hours prior to 0001 the outage start day. Time may vary with the day of the week as outlined in Local Control Center procedures.

** Represents number of hours prior to 0001 the outage start day as outlined in OP-3.

NOTE: If an application is disapproved at any point in this process, a new application is submitted to schedule the work on an alternate date.

Attachment 6 Interpool Transmission Facilities, HYDRO QUEBEC TRANSENERGIE - NEW ENGLAND

HYDRO QUEBEC TRANSENERGIE WORK TRANSMISSION OUTAGE COORDINATION – ADVANCE NOTICE MAINTENANCE APPLICATIONS

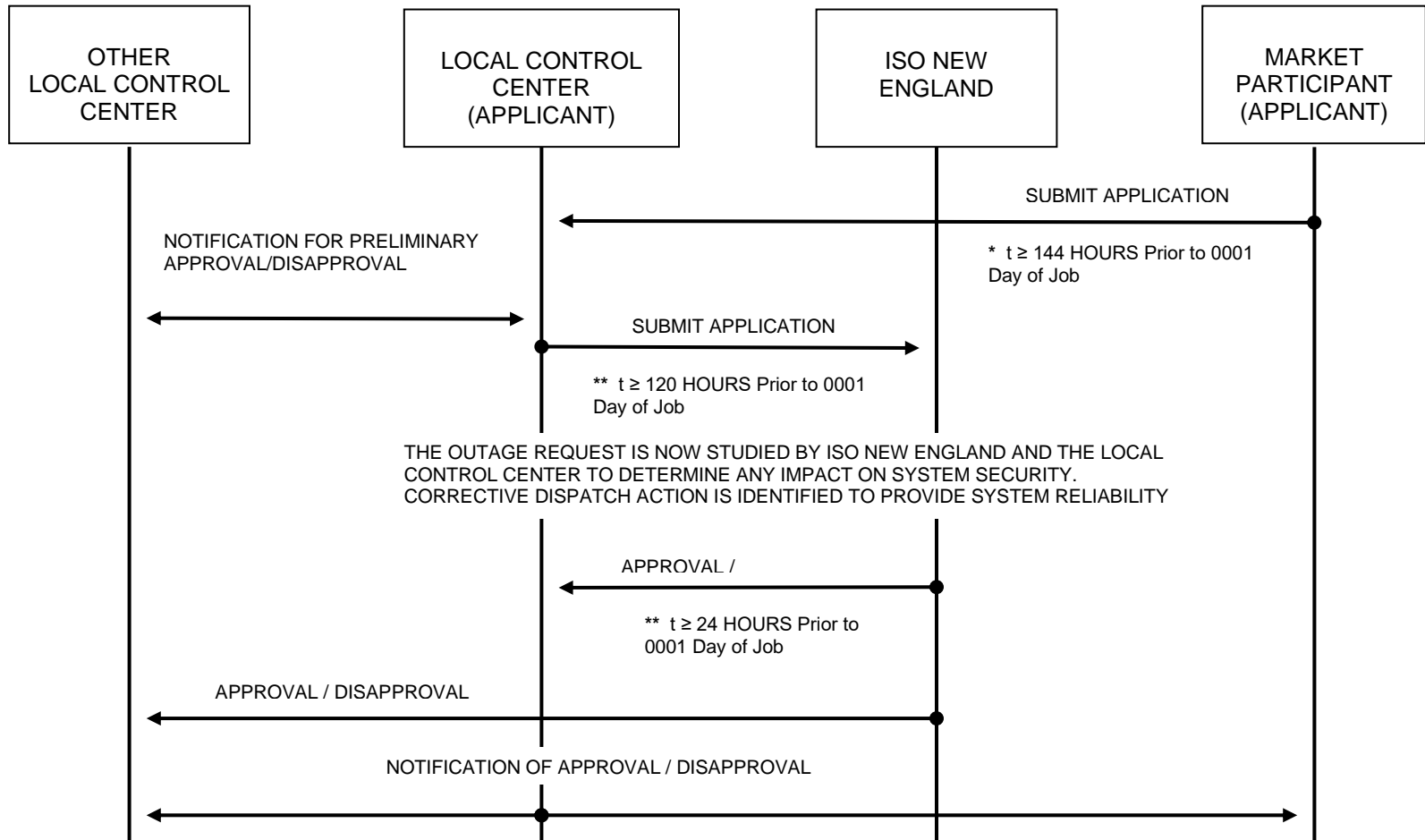


* Represents number of hours prior to 0001 the outage start day as outlined in OP-3.

NOTE: If an application is disapproved at any point in this process, a new application is submitted to schedule the work on an alternate date.

Attachment 7 Inter-LCC Transmission Facilities

TRANSMISSION OUTAGE COORDINATION - ADVANCE NOTICE MAINTENANCE APPLICATIONS



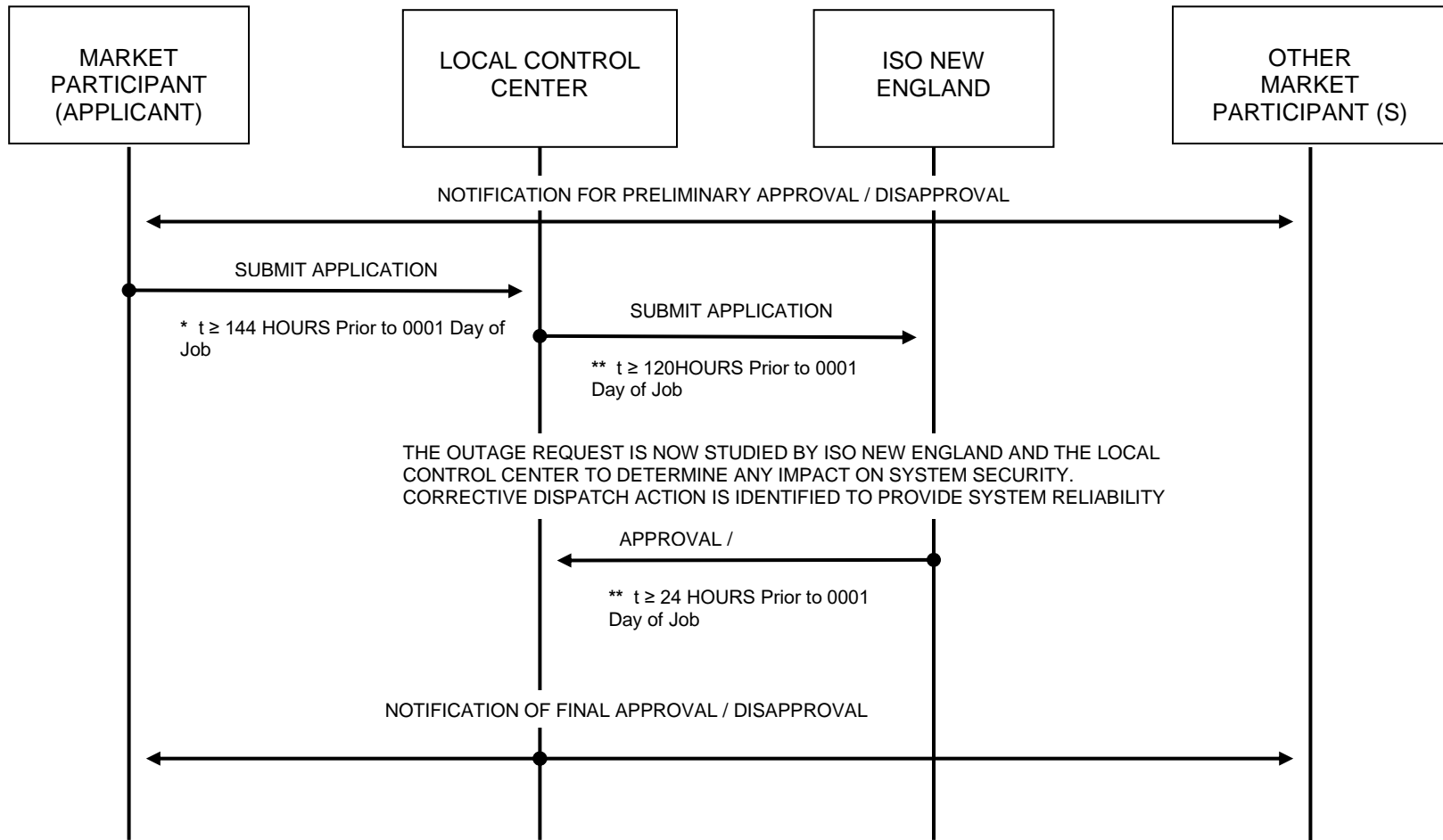
* Represents number of hours prior to 0001 the outage start day. Time may vary with the day of the week as outlined in Local Control Center procedures.

** Represents number of hours prior to 0001 the outage start day as outlined in OP-3.

NOTE: If an application is disapproved at any point in this process, a new application is submitted to schedule the work on an alternate date.

Attachment 8 Inter-LCC Transmission Facilities, INTER - COMPANY WORK

TRANSMISSION OUTAGE COORDINATION - ADVANCE NOTICE MAINTENANCE APPLICATIONS



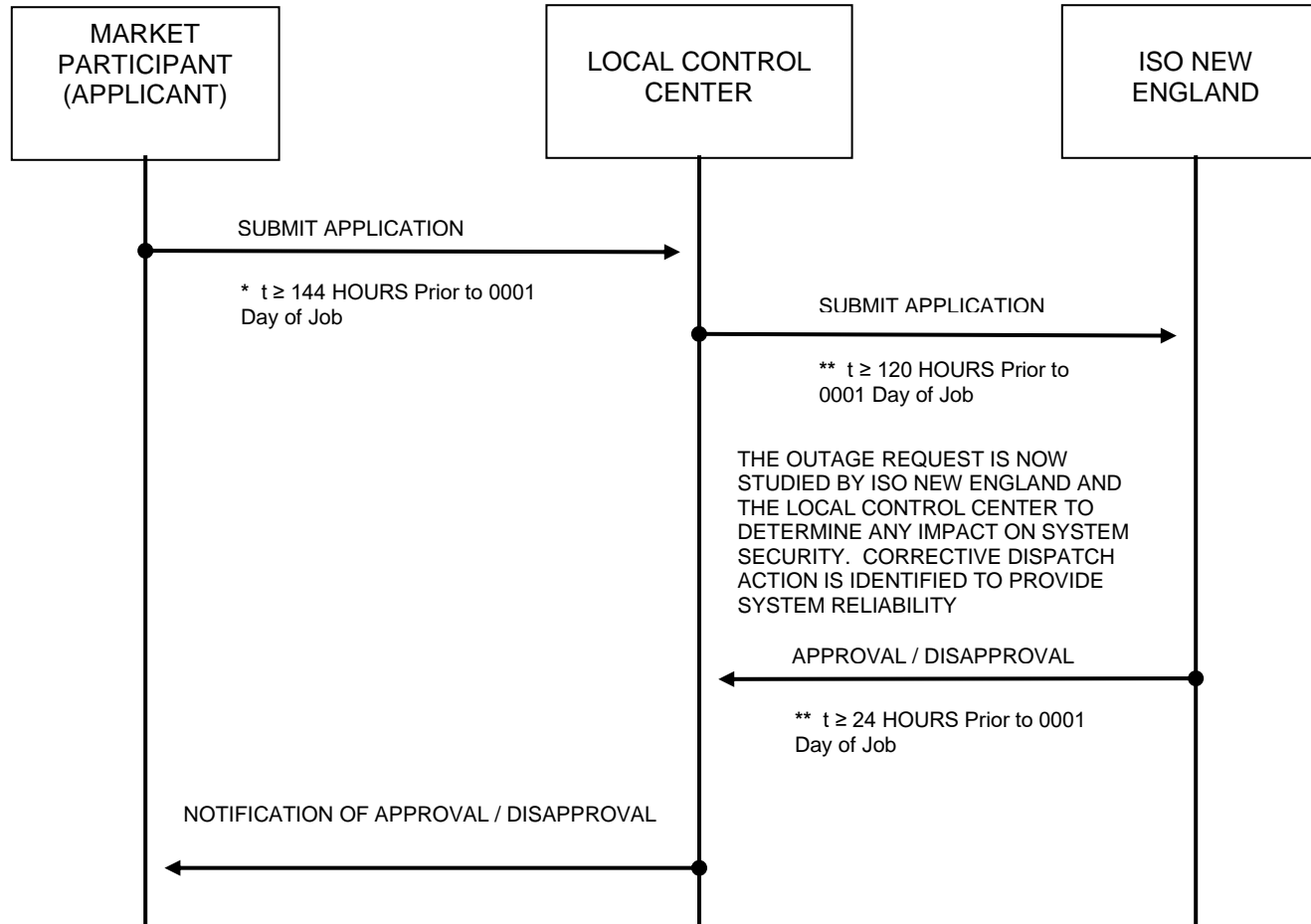
* Represents number of hours prior to 0001 the outage start day. Time may vary with the day of the week as outlined in Local Control Center procedures.

** Represents number of hours prior to 0001 the outage start day as outlined in OP-3.

NOTE: If an application is disapproved at any point in this process, a new application is submitted to schedule the work on an alternate date.

Attachment 9 Inter-LCC Transmission Facilities, INTER - COMPANY WORK

TRANSMISSION OUTAGE COORDINATION – ADVANCE NOTICE MAINTENANCE APPLICATIONS



* Represents number of hours prior to 0001 the outage start day. Time may vary with the day of the week as outlined in Local Control Center procedures.

** Represents number of hours prior to 0001 the outage start day as outlined in OP-3.

NOTE: If an application is disapproved at any point in this process, a new application is submitted to schedule the work on an alternate date.

OP-3 Attachments 1 - 9 Revision History

Document History (This Document History documents action taken on the equivalent NEPOOL Procedure prior to the RTO Operations Date as well revisions made to the ISO New England Procedure subsequent to the RTO Operations Date.)

Rev. No.	Date	Reason
Rev 1	4/25/02	
Rev 2	02/01/05	Updated to conform to RTO
Rev 3	12/15/08	Updated to conform to new OP#3 timeline requirements
Rev 4	12/01/10	Biennial review by procedure owner; Editorial & format changes: changed font to Arial, added Table of Contents, added "uncontrolled" disclaimer to 1 st page footer, added "Hard Copy is Uncontrolled" to all page footers and changed page numbering format to Page X of Y
Rev 5	11/29/12	Biennial review by procedure owner; 1 st page Footer, deleted disclaimer 2 nd paragraph; Globally, used correct format for 24 hour time (deleted the colon ":"); Globally, in Notes, replaced "ISO NE OP 3" & "ISO OP 3" with "OP-3"; Globally replaced NBEP with NBSO; Globally, replaced "satellite" with Local Control Center
Rev 6	11/26/14	Biennial review by procedure owner; Where applicable, replaced "NBSO" with "NBPSO" and added "Hydro Québec" prior to "TransEnergie";
Rev 6.1	08/30/16	Periodic review performed requiring no changes; Added required corporate document identity to all Footers:
Rev 6.2	08/03/18	Biennial review performed requiring no changes; Made administrative changes required to publish a Minor Revision;
Rev 6.3	04/28/20	Biennial review performed requiring no changes;
Rev 6.4	12/08/21	Biennial review performed requiring no changes;
Rev 6.5	12/06/23	Biennial review performed by procedure owner requiring no changes; Made administrative changes required to publish a Minor Revision.