



Fuel Oil Charts

Most Recent Data

Most Recent Data vs. Historical Trends

Historical Archives

SYSTEM OPERATIONS



INVENTORY CHARTS

Shows the volume of usable fuel oil stored at New England's generating stations which use oil as their primary or secondary fuel. Also shows the maximum capacity, indicating the on-site storage capacity of usable fuel. These values reflect inventory and capacity as reported on generator surveys and do not account for generator outages or reductions, including emissions limitations.

Fuel oil is categorized in these charts as either **Residual Fuel Oil (RFO)** or **Distillate Fuel Oil (DFO)**. The RFO category includes #6 Fuel Oil and the DFO category includes #2 Fuel Oil, Ultra Low Sulfur Diesel (ULSD), Kerosene, and Jet Fuel.

DEPLETION CHARTS

Shows the electricity output capability remaining from New England's oil-fired generating stations, as a function of days of continuous operation at their Seasonal Claimed Capability (SCC). As stations run out of stored oil, their SCC is removed from the remaining output capability. **This does not represent a forecast** and does not account for replenishment; instead, the area under the curve represents the maximum energy available from oil-fired generators within a given number of days, given current oil levels.

BURN AND REFILL CHARTS

Shows the surveyed consumption and refill of fuel oil at New England's oil-fired generating stations, as a weekly average across all weeks addressed by a given generator survey. The refill is calculated based on surveyed inventories and consumption. When available, burn and refill are categorized as DFO or RFO.



MOST RECENT DATA

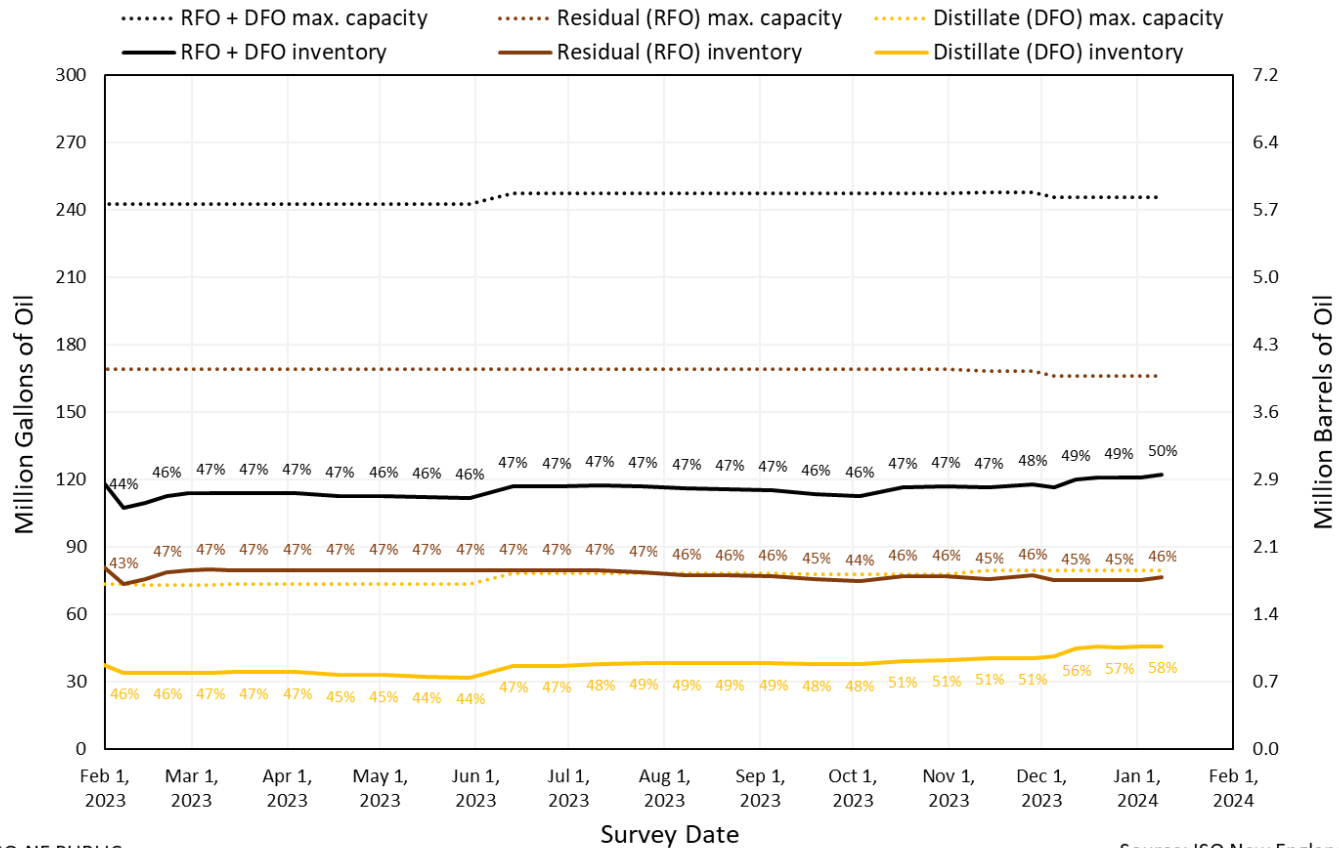


Oil Inventory: Last 12 Months

Fuel Oil Usable Inventory: Last 12 Months

Based on OP-21 generator surveys received from market participants

Percentages indicate inventory as % of maximum



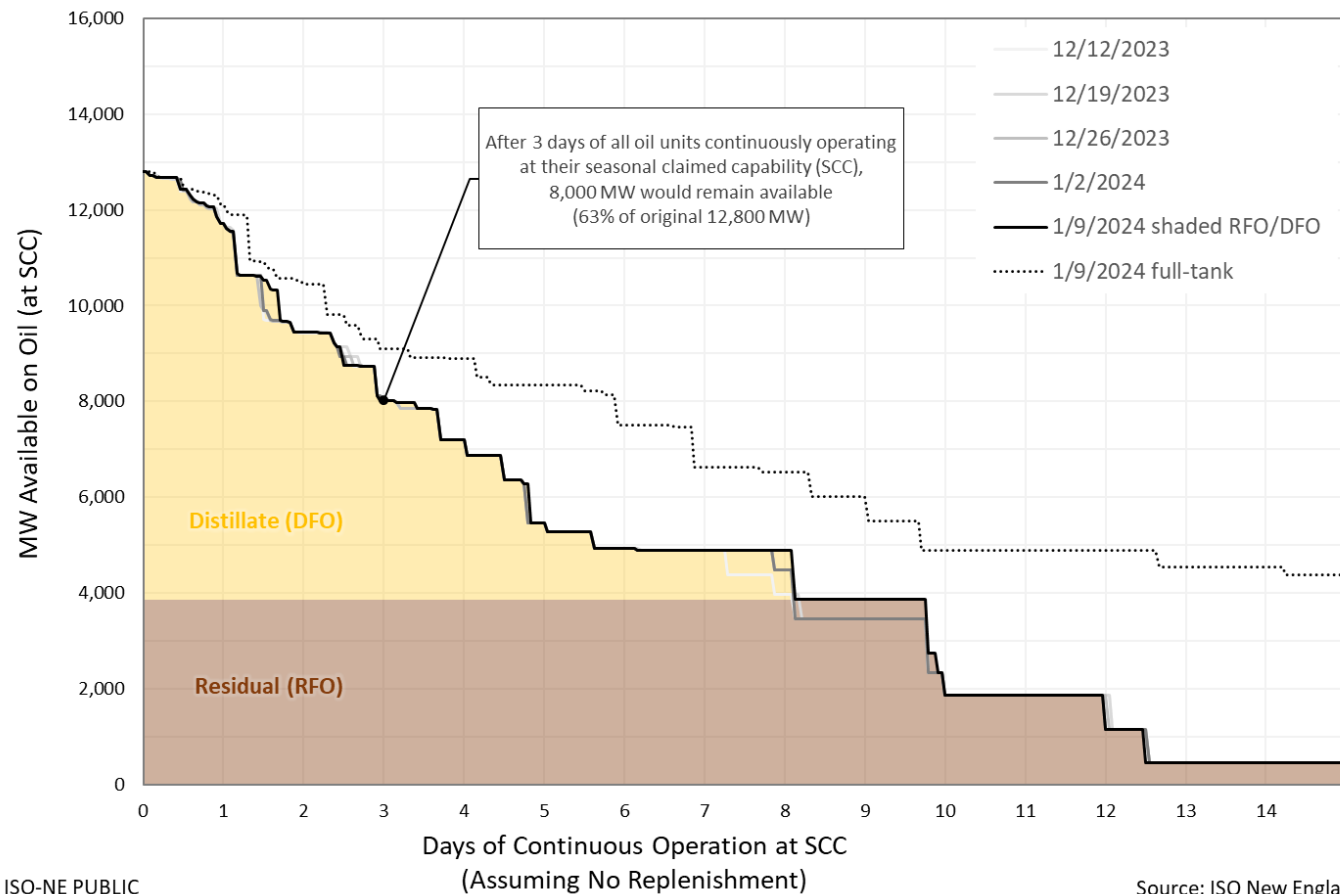
ISO-NE PUBLIC

Source: ISO New England

Oil Depletion: Most Recent Surveys

Oil and Electricity Depletion: 5 Most Recent Surveys

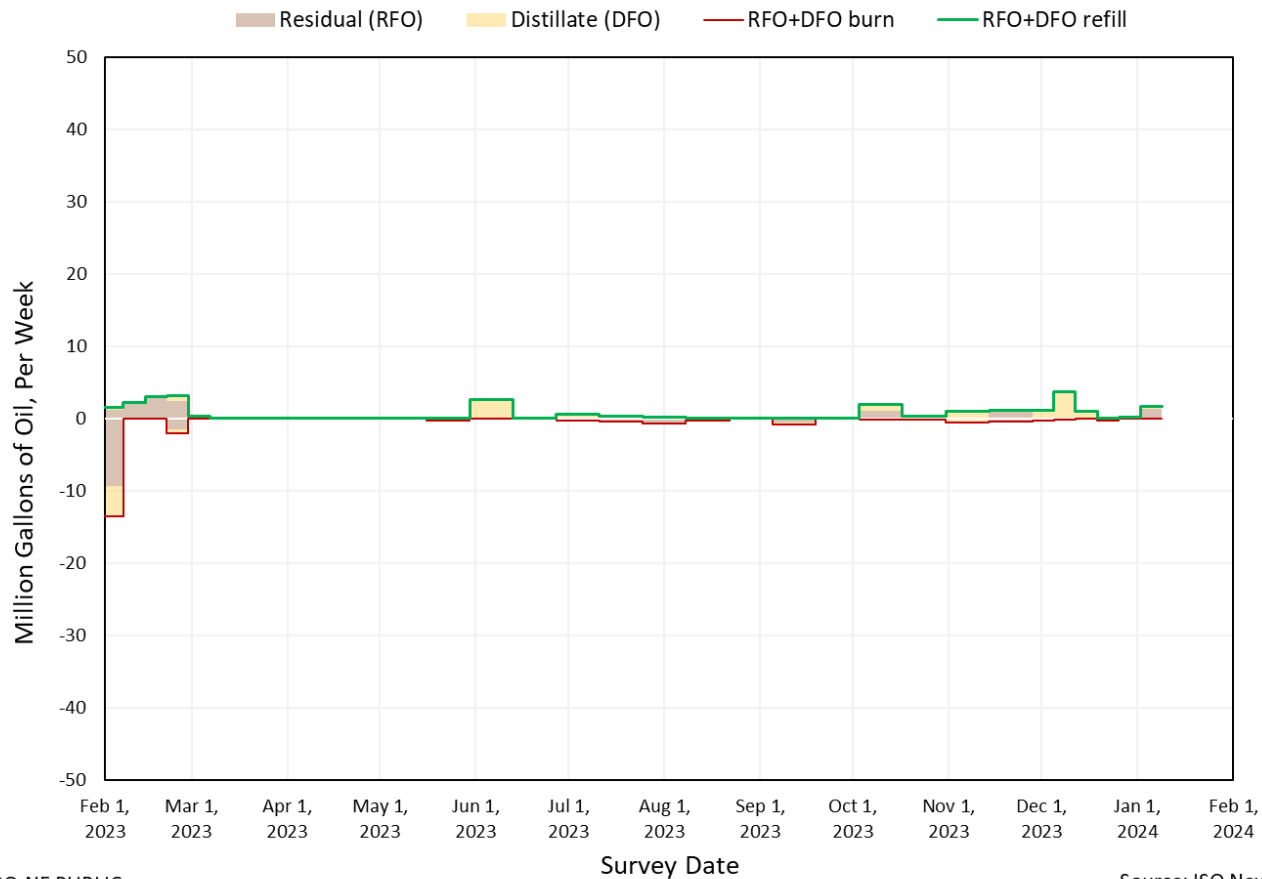
Based on OP-21 generator surveys received from market participants



Oil Burn and Refill: Last 12 Months

Fuel Oil Burned and Refilled Per Week: Last 12 Months

Based on OP-21 generator surveys received from market participants



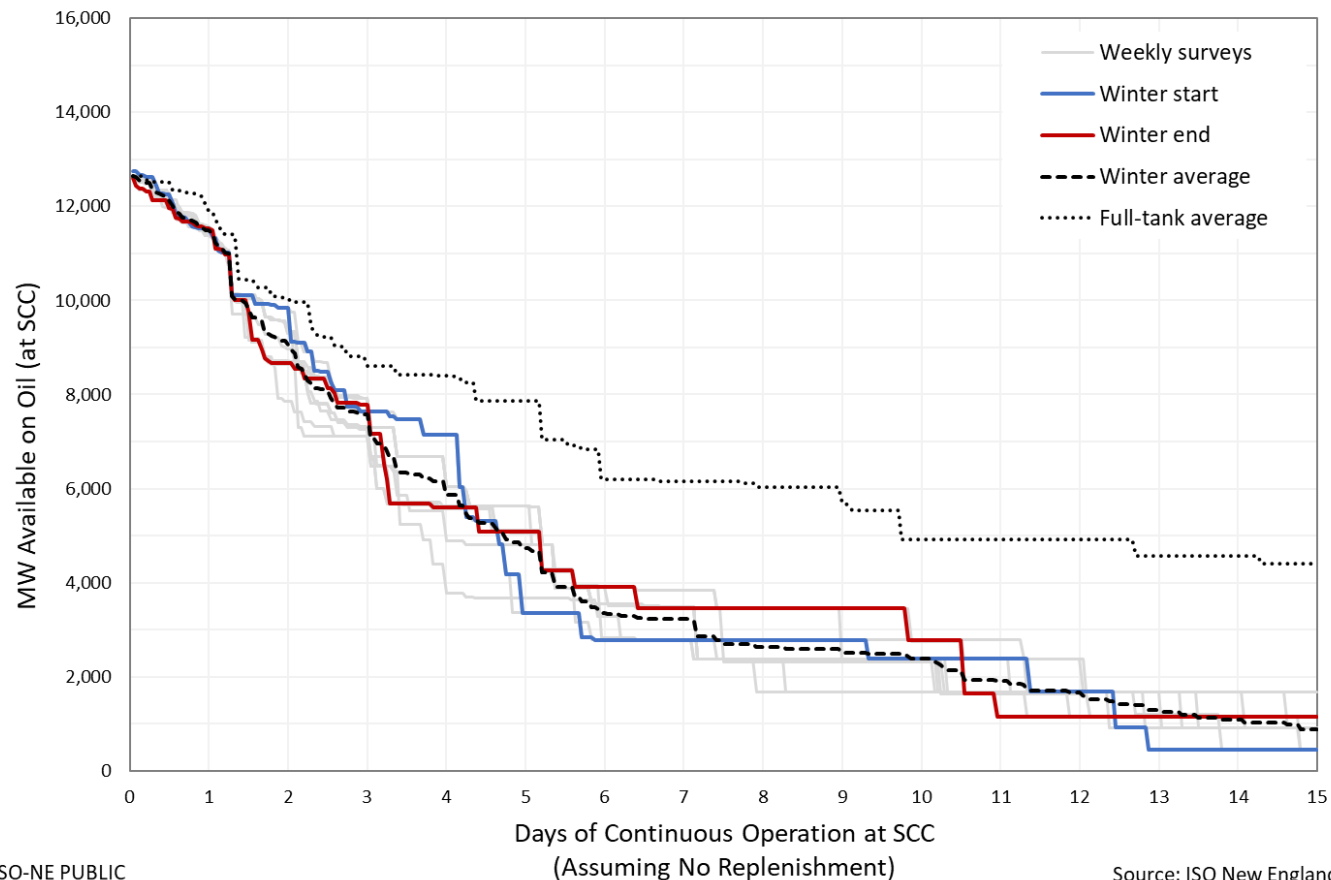
ISO-NE PUBLIC

Source: ISO New England

Oil Depletion: Most Recent Winter

Oil and Electricity Depletion: Winter 2022/2023

Based on OP-21 generator surveys received from market participants



ISO-NE PUBLIC

Source: ISO New England

MOST RECENT DATA VS. HISTORICAL TRENDS

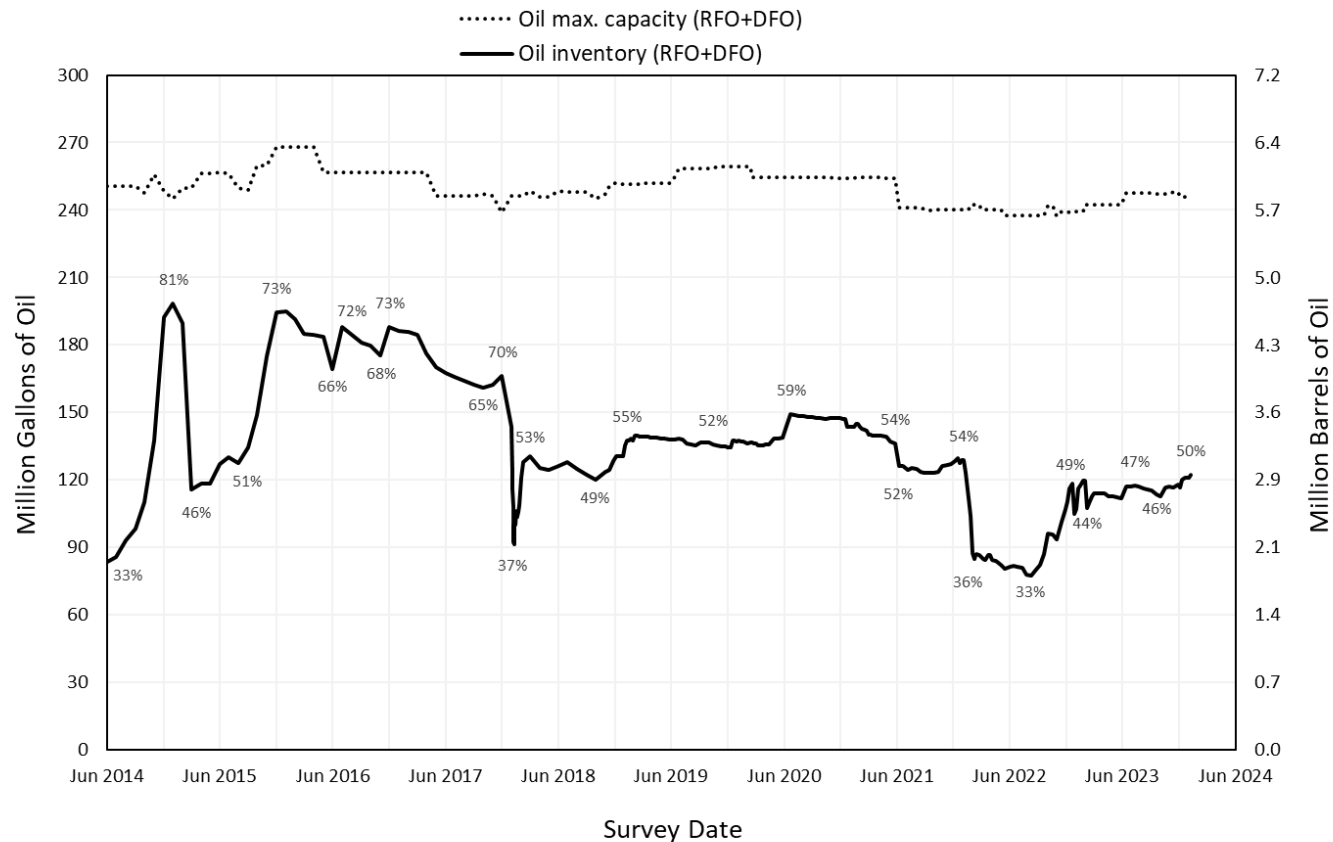


Oil Inventory: History Since 2014

Fuel Oil Usable Inventory: June 2014 - June 2024

Based on OP-21 generator surveys received from market participants

Percentages indicate inventory as % of maximum



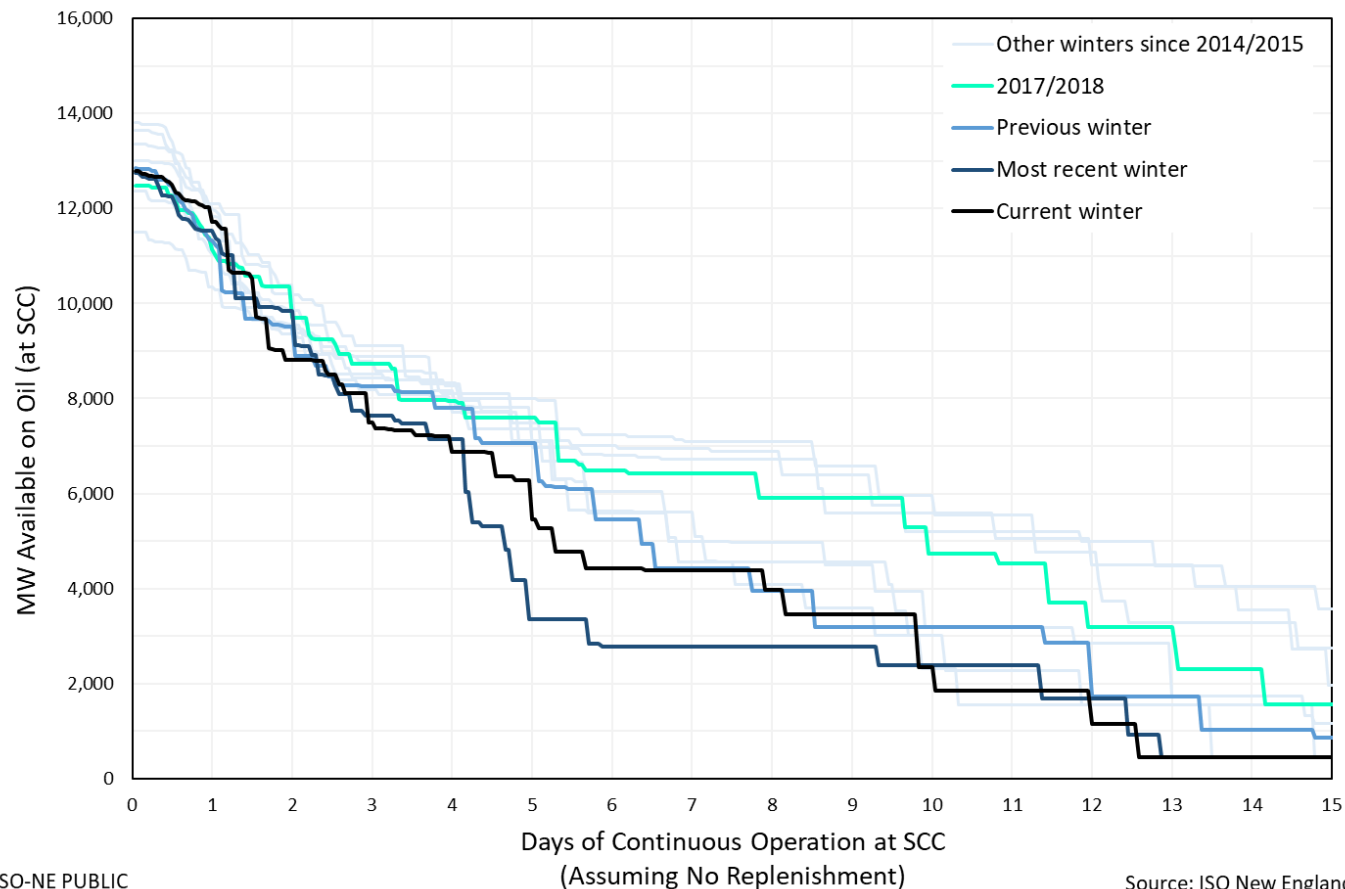
ISO-NE PUBLIC

Source: ISO New England

Oil Depletion: Winter Start History

Oil and Electricity Depletion: Winter Start

Based on OP-21 generator surveys received from market participants



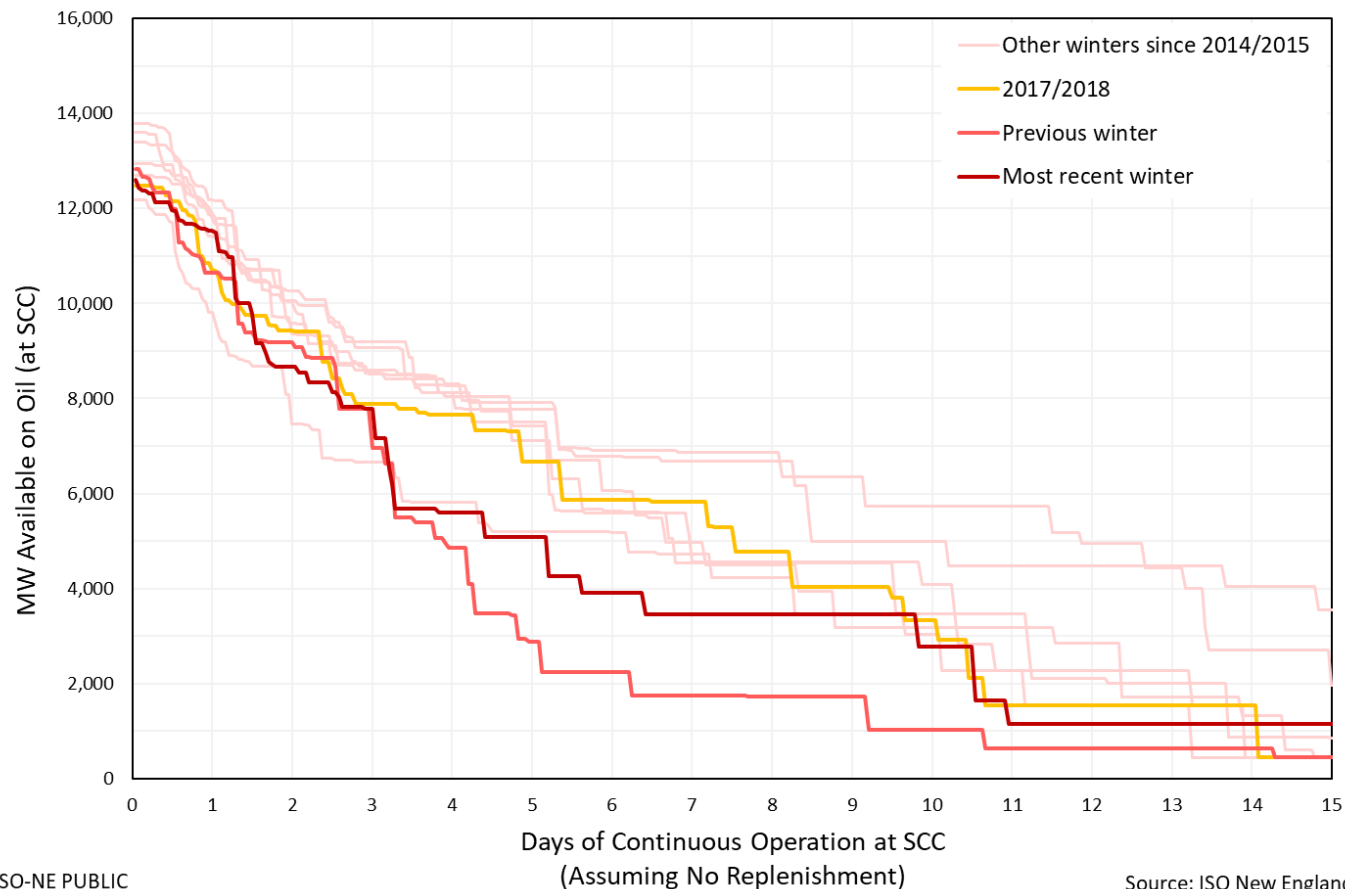
ISO-NE PUBLIC

Source: ISO New England

Oil Depletion: Winter End History

Oil and Electricity Depletion: Winter End

Based on OP-21 generator surveys received from market participants



ISO-NE PUBLIC

Source: ISO New England

HISTORICAL ARCHIVE: OIL DEPLETION

Slides ordered by reverse chronological

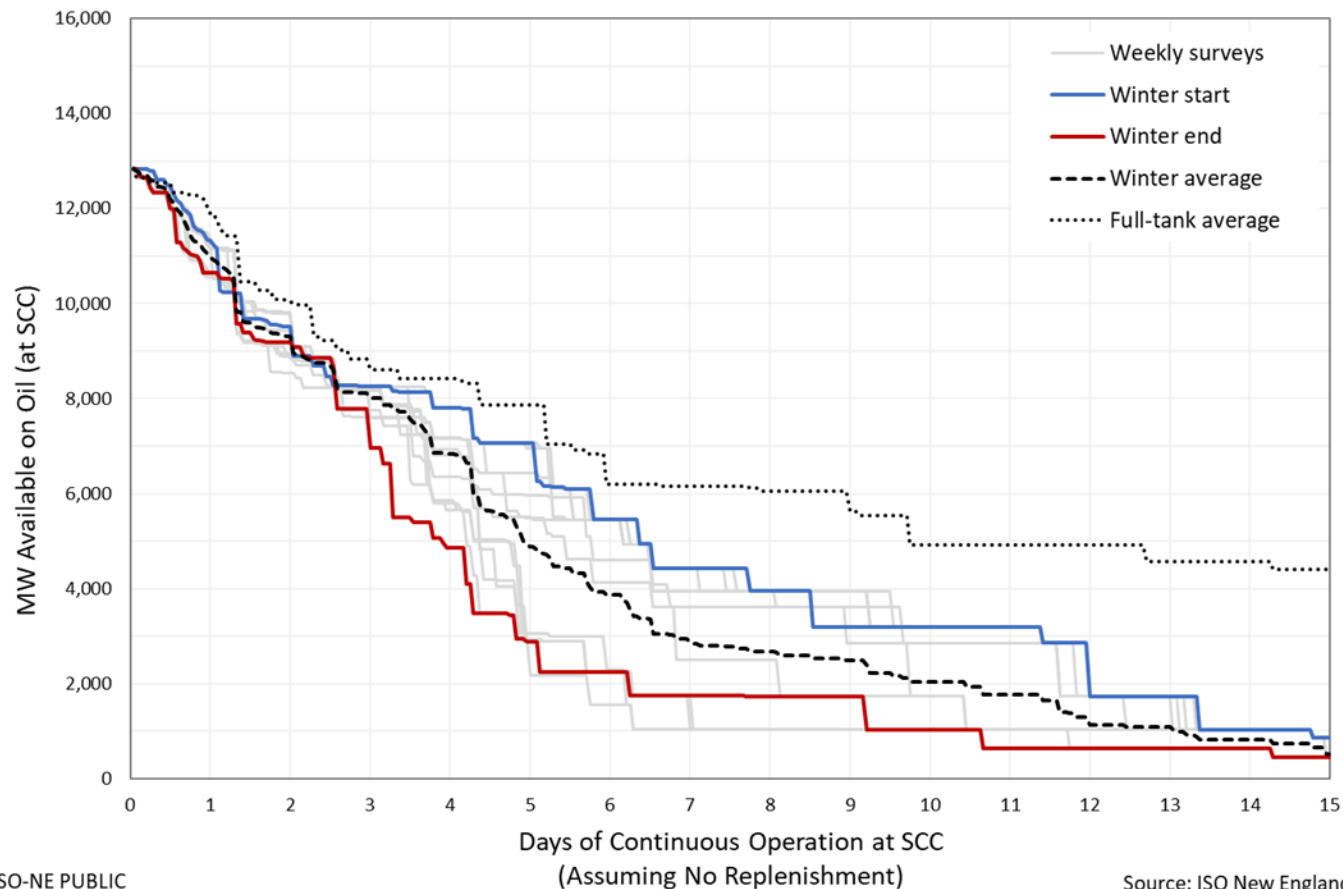
Data limited before winter 2018/2019



Oil Depletion: Winter 2021/2022

Oil and Electricity Depletion: Winter 2021/2022

Based on OP-21 generator surveys received from market participants



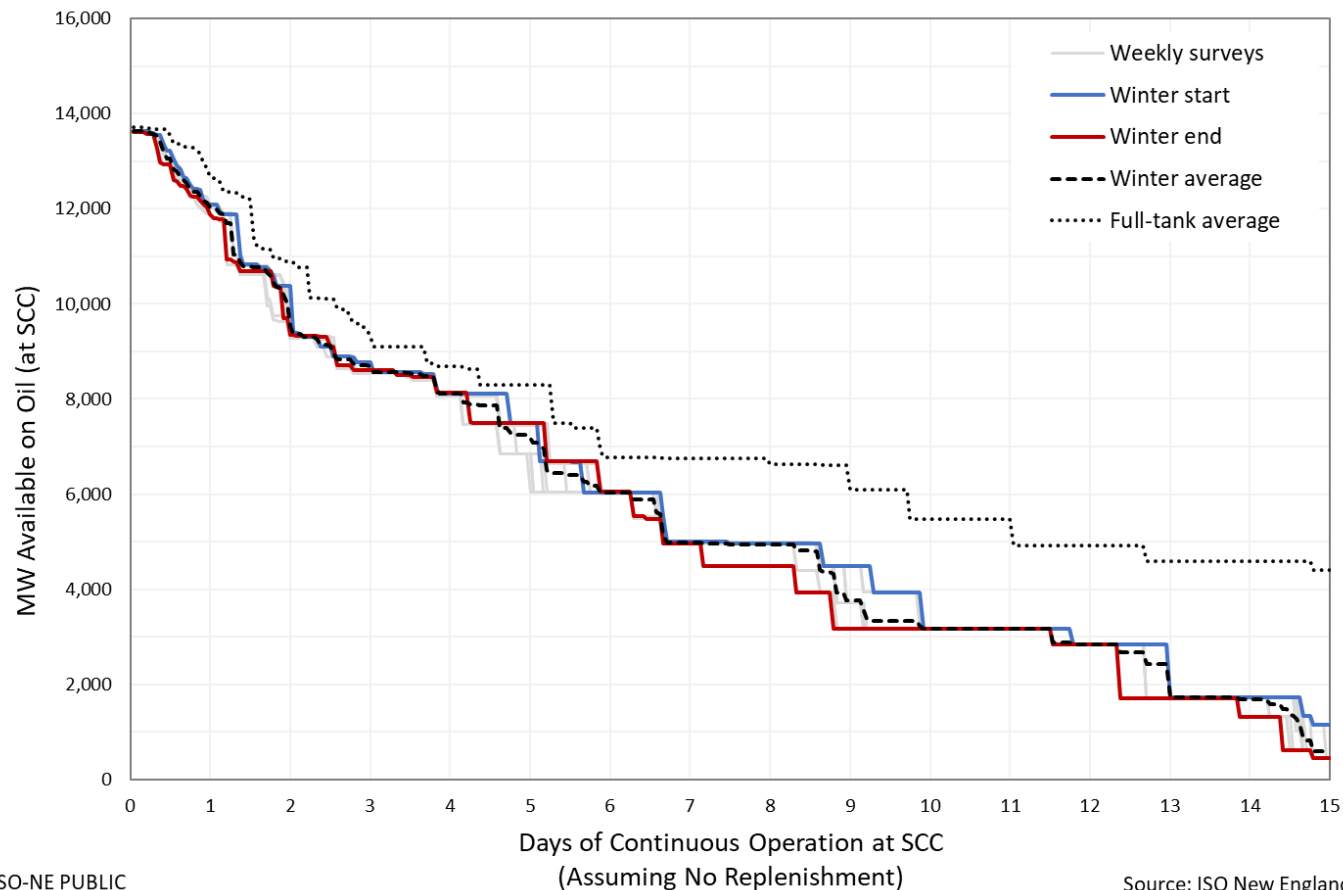
ISO-NE PUBLIC

Source: ISO New England

Oil Depletion: Winter 2020/2021

Oil and Electricity Depletion: Winter 2020/2021

Based on OP-21 generator surveys received from market participants



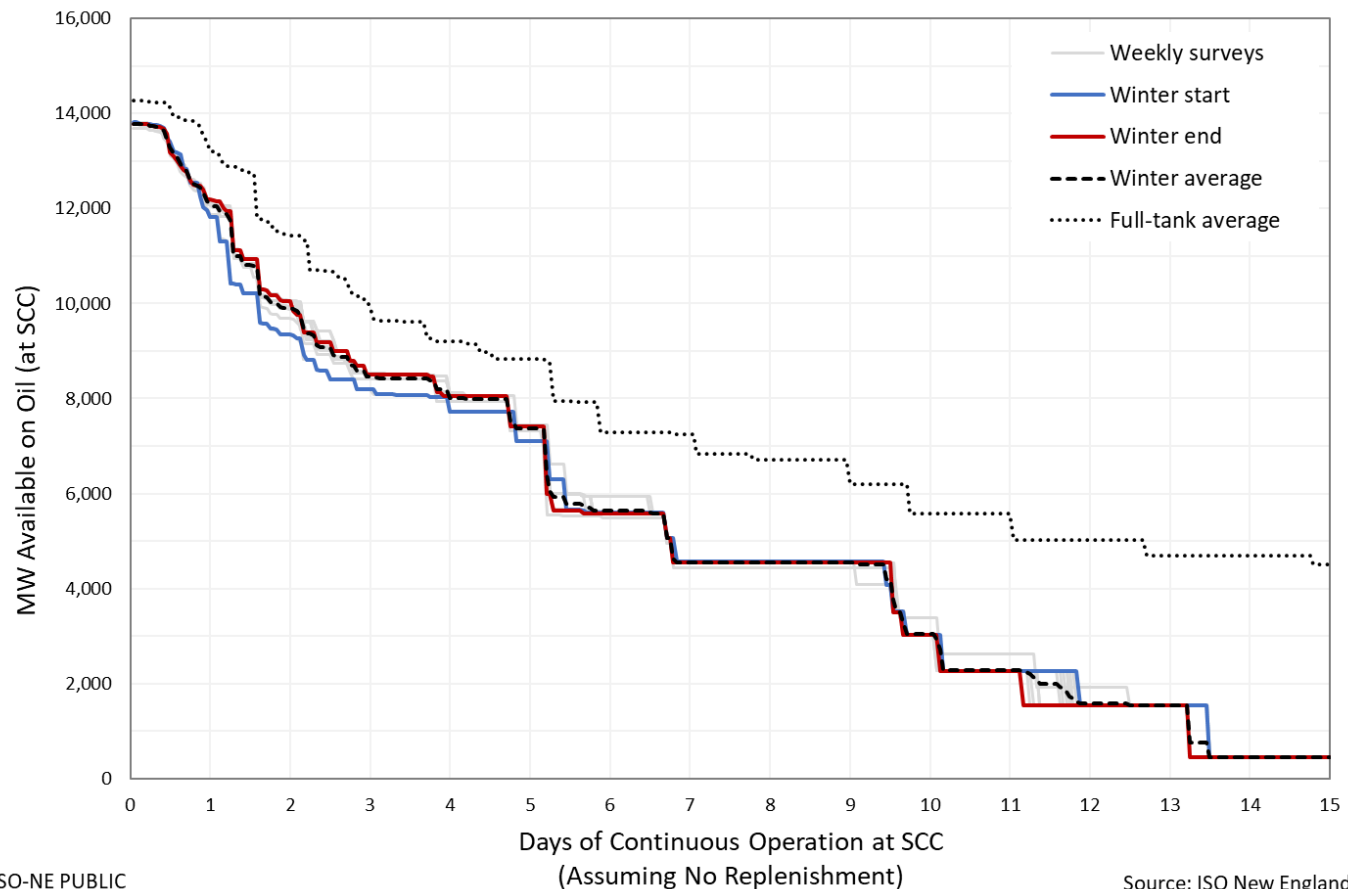
ISO-NE PUBLIC

Source: ISO New England

Oil Depletion: Winter 2019/2020

Oil and Electricity Depletion: Winter 2019/2020

Based on OP-21 generator surveys received from market participants



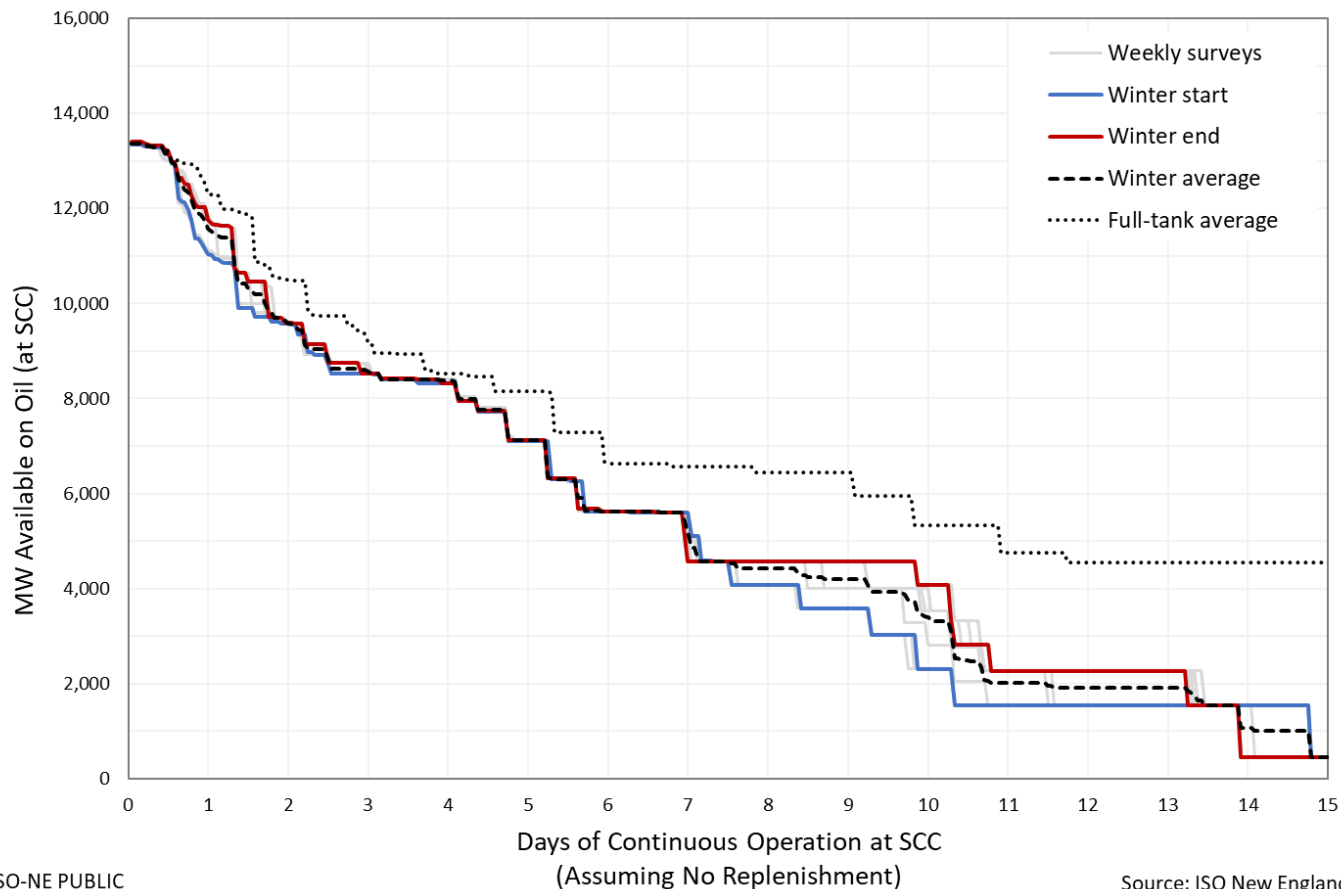
ISO-NE PUBLIC

Source: ISO New England

Oil Depletion: Winter 2018/2019

Oil and Electricity Depletion: Winter 2018/2019

Based on OP-21 generator surveys received from market participants



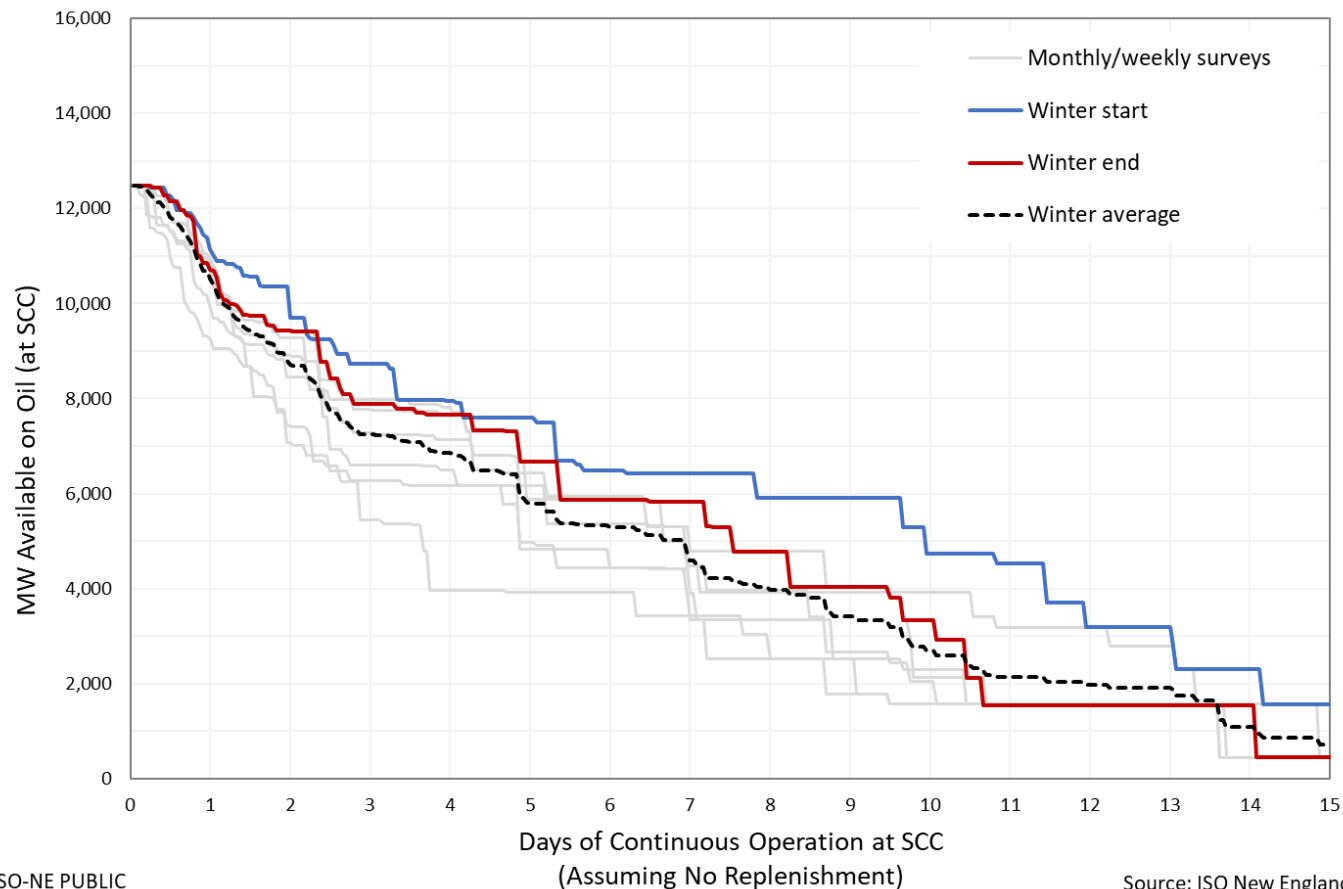
ISO-NE PUBLIC

Source: ISO New England

Oil Depletion: Winter 2017/2018

Oil and Electricity Depletion: Winter 2017/2018

Based on OP-21 generator surveys received from market participants



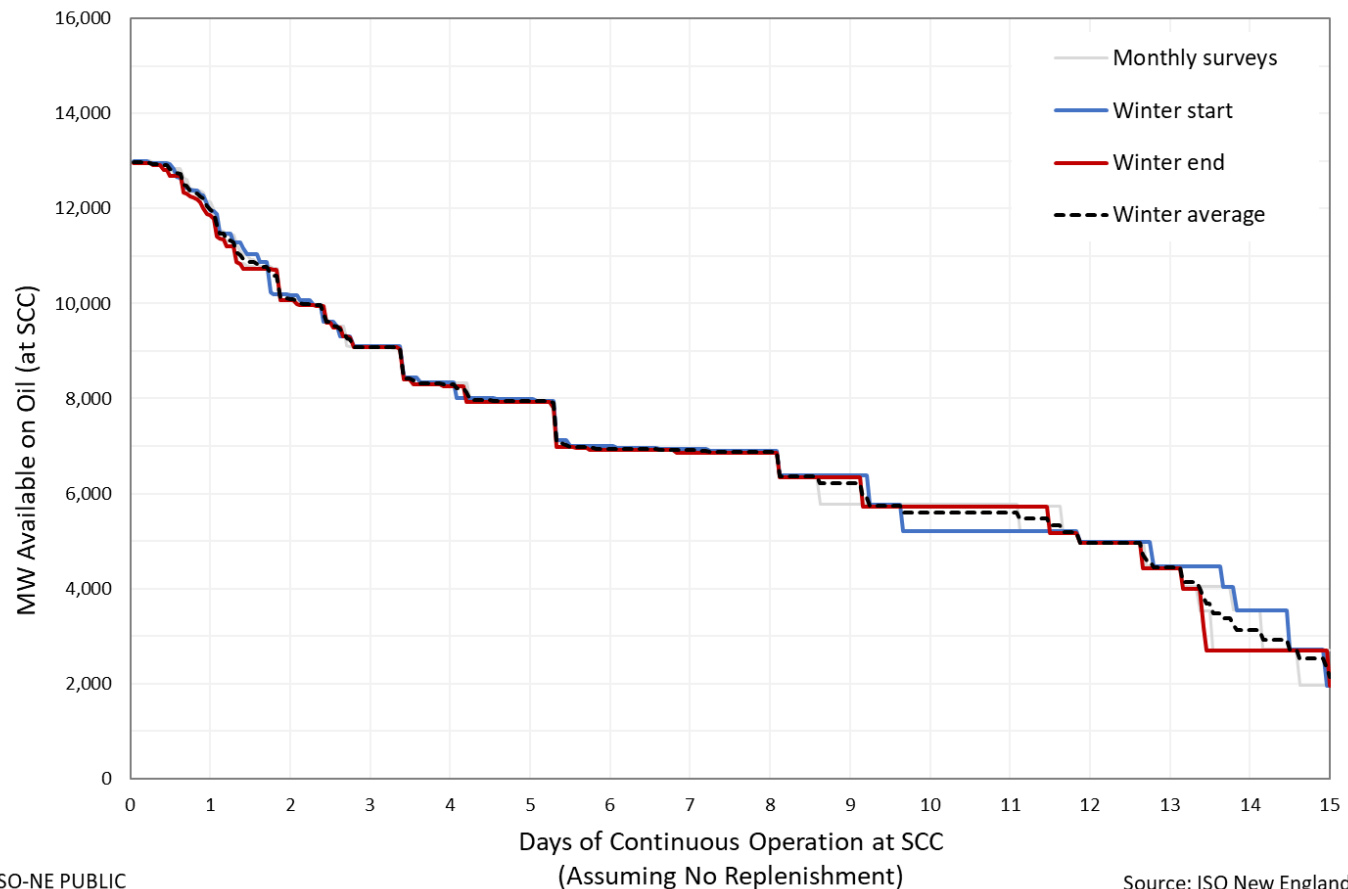
ISO-NE PUBLIC

Source: ISO New England

Oil Depletion: Winter 2016/2017

Oil and Electricity Depletion: Winter 2016/2017

Based on OP-21 generator surveys received from market participants



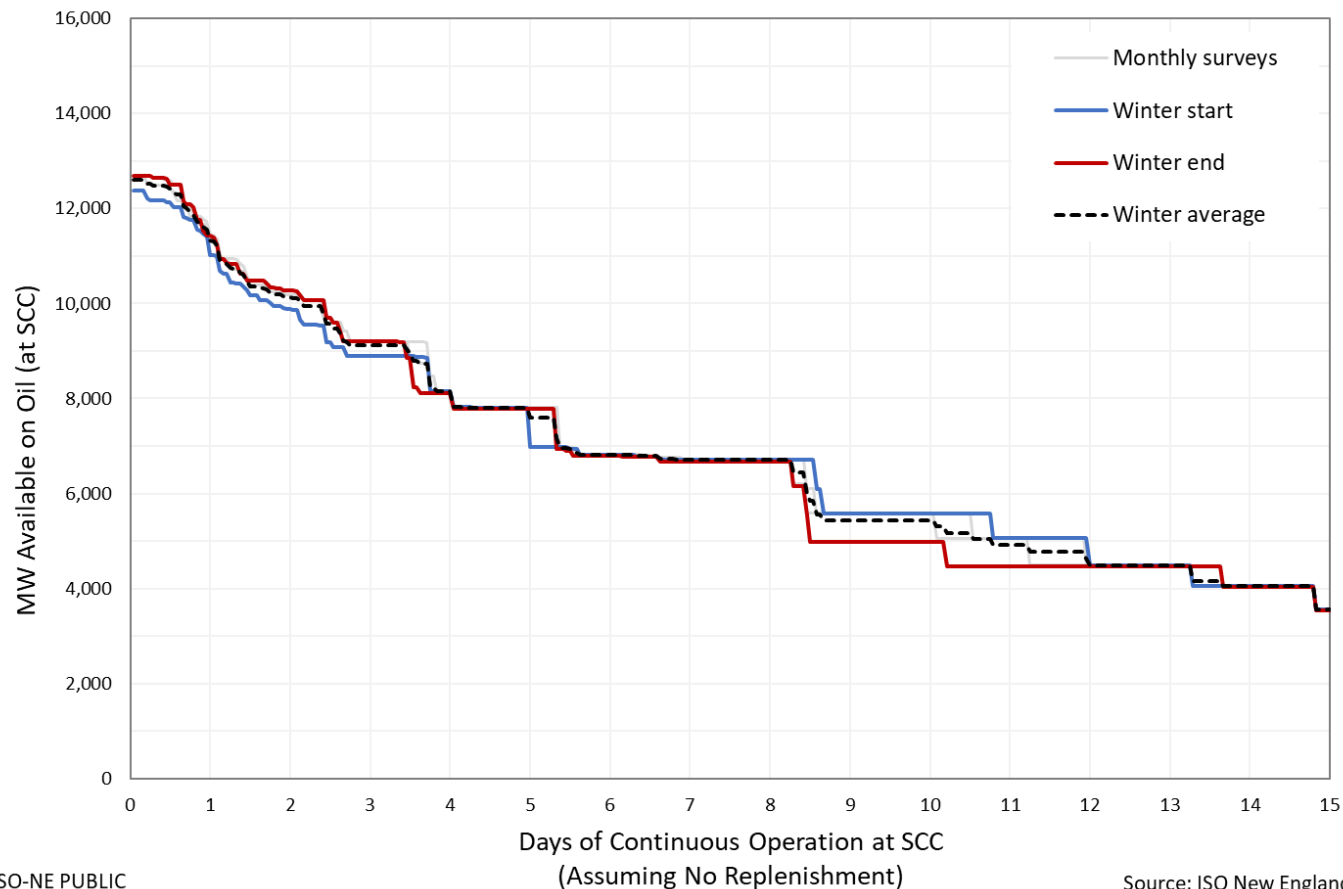
ISO-NE PUBLIC

Source: ISO New England

Oil Depletion: Winter 2015/2016

Oil and Electricity Depletion: Winter 2015/2016

Based on OP-21 generator surveys received from market participants



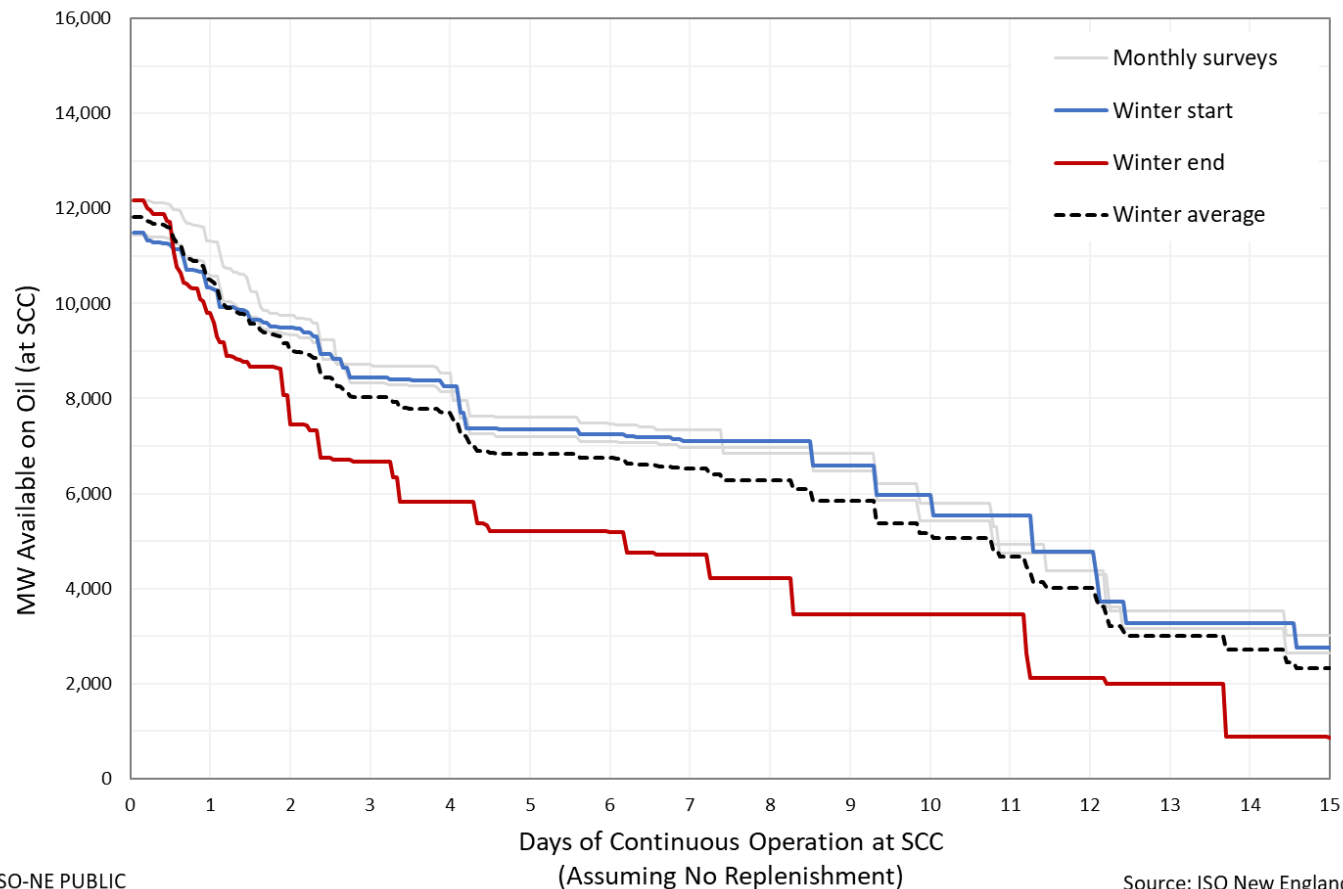
ISO-NE PUBLIC

Source: ISO New England

Oil Depletion: Winter 2014/2015

Oil and Electricity Depletion: Winter 2014/2015

Based on OP-21 generator surveys received from market participants



ISO-NE PUBLIC

Source: ISO New England

HISTORICAL ARCHIVE: OIL INVENTORY

Slides ordered by reverse chronological

RFO/DFO breakdown not recorded before Sep. 2021

Data collected monthly before winter 2018/2019

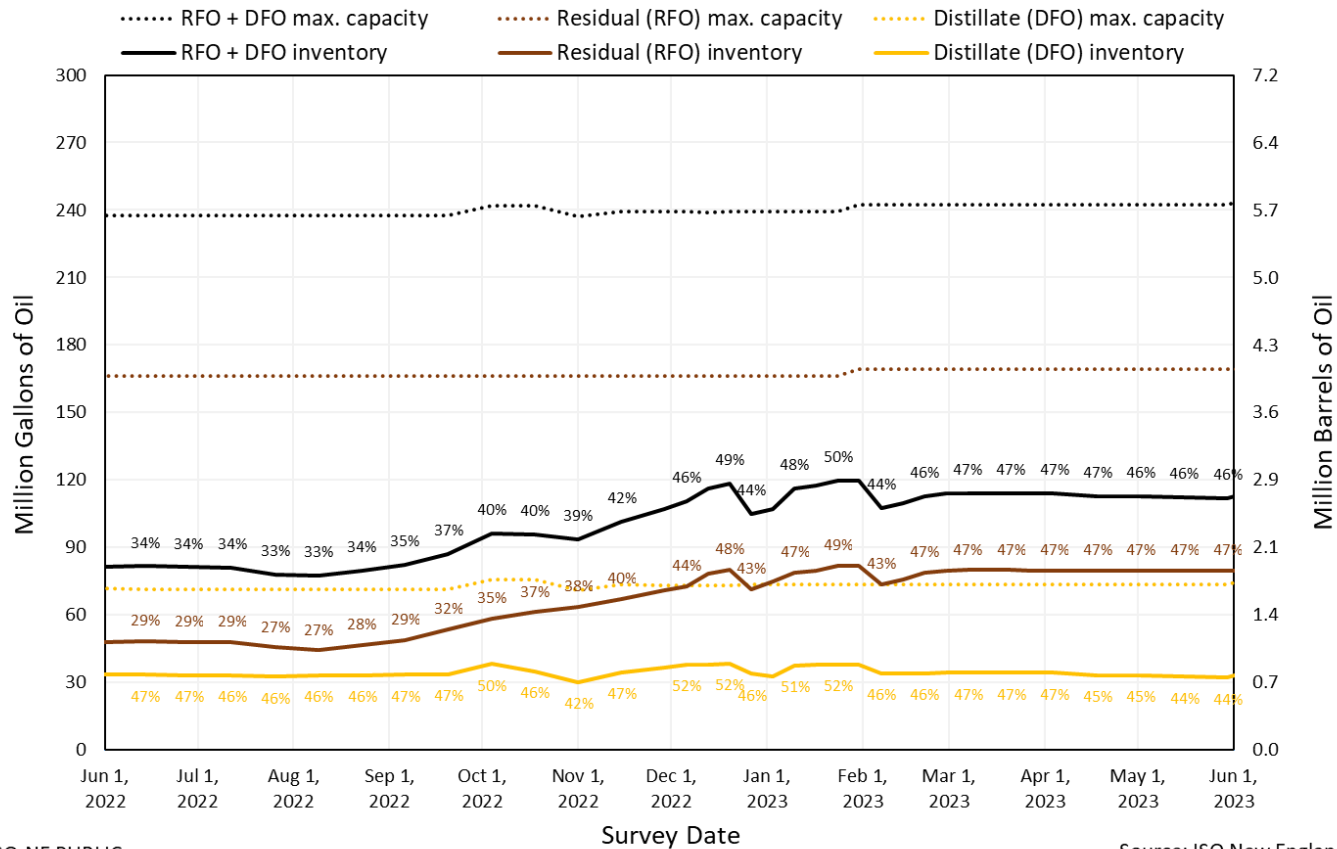


Oil Inventory: 2022-2023

Fuel Oil Usable Inventory: June 2022 - June 2023

Based on OP-21 generator surveys received from market participants

Percentages indicate inventory as % of maximum



ISO-NE PUBLIC

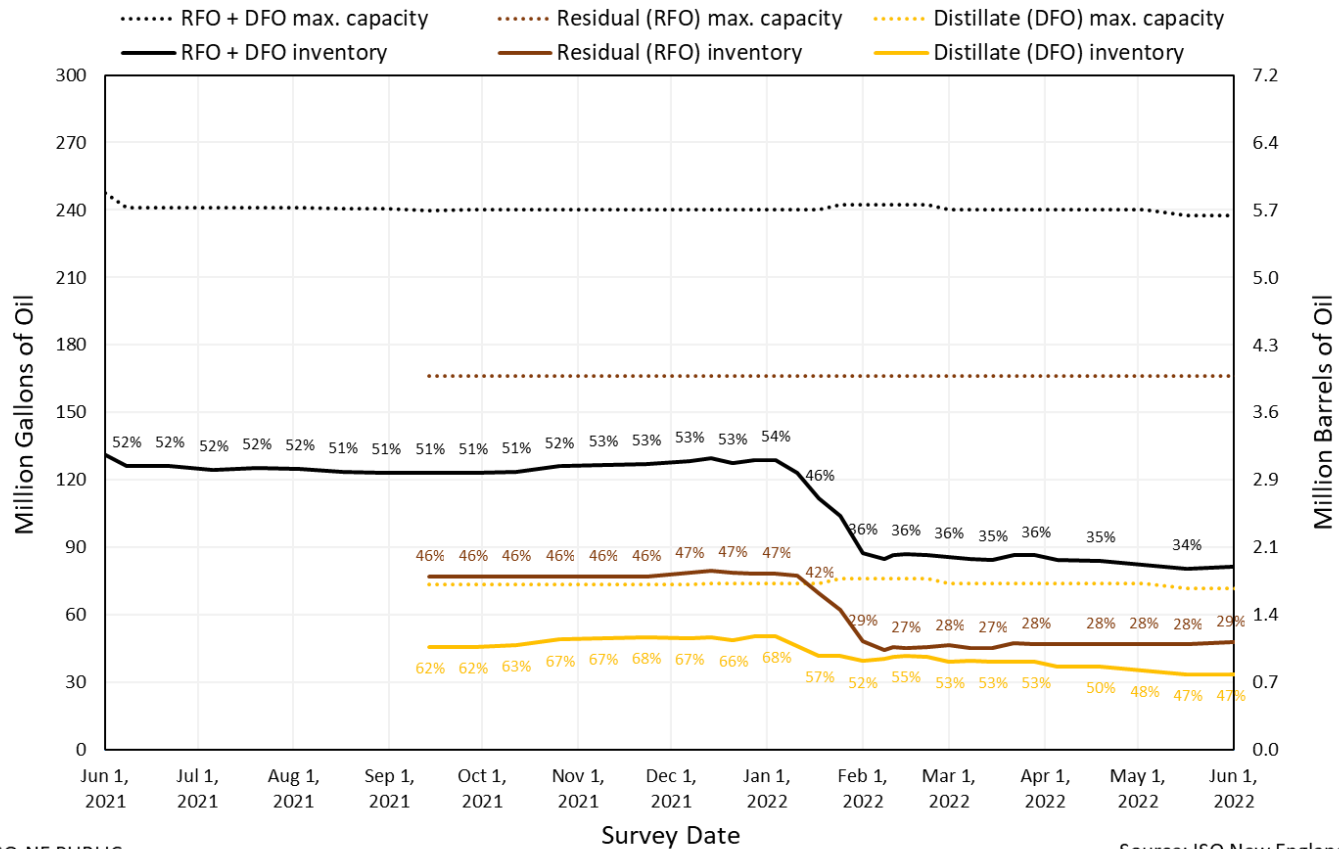
Source: ISO New England

Oil Inventory: 2021-2022

Fuel Oil Usable Inventory: June 2021 - June 2022

Based on OP-21 generator surveys received from market participants

Percentages indicate inventory as % of maximum



ISO-NE PUBLIC

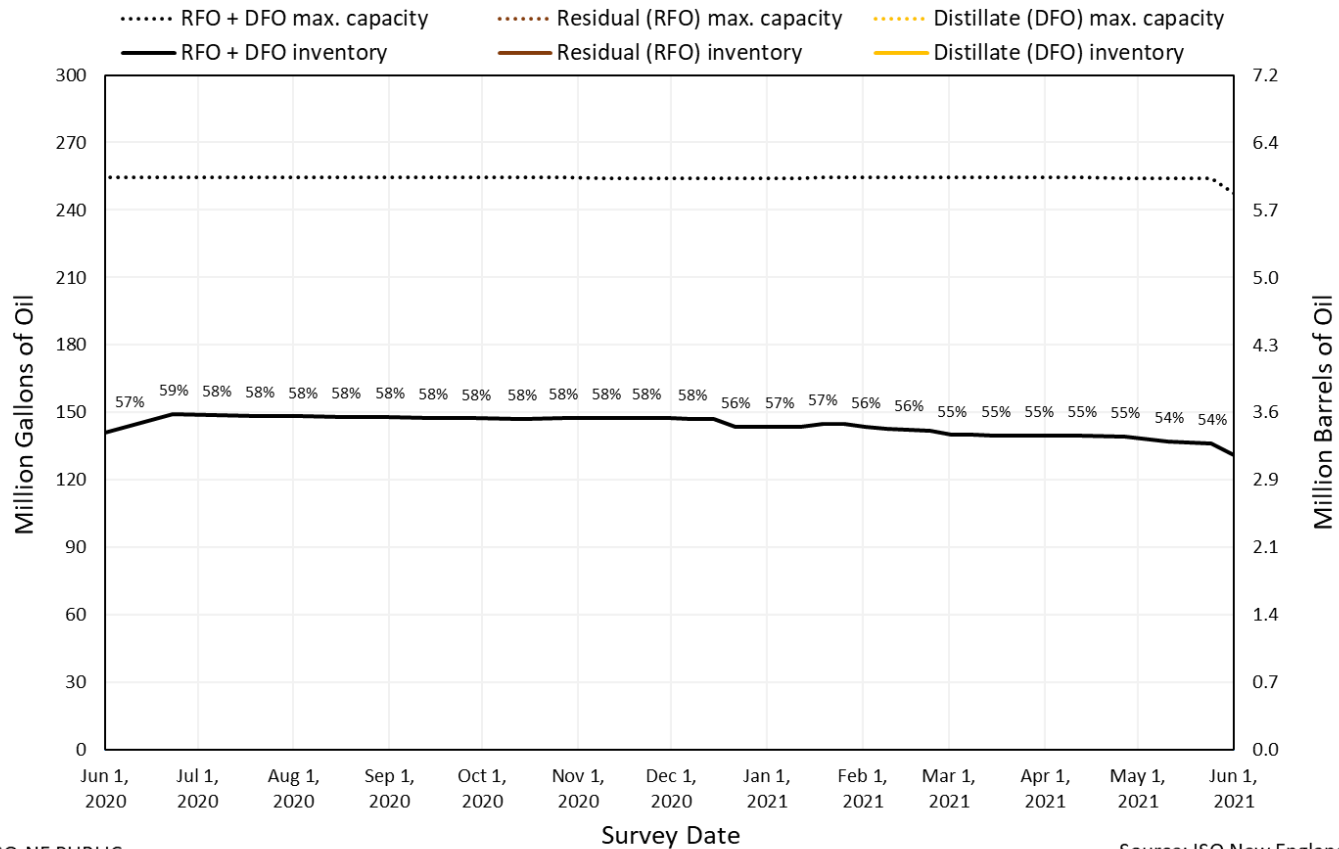
Source: ISO New England

Oil Inventory: 2020-2021

Fuel Oil Usable Inventory: June 2020 - June 2021

Based on OP-21 generator surveys received from market participants

Percentages indicate inventory as % of maximum



ISO-NE PUBLIC

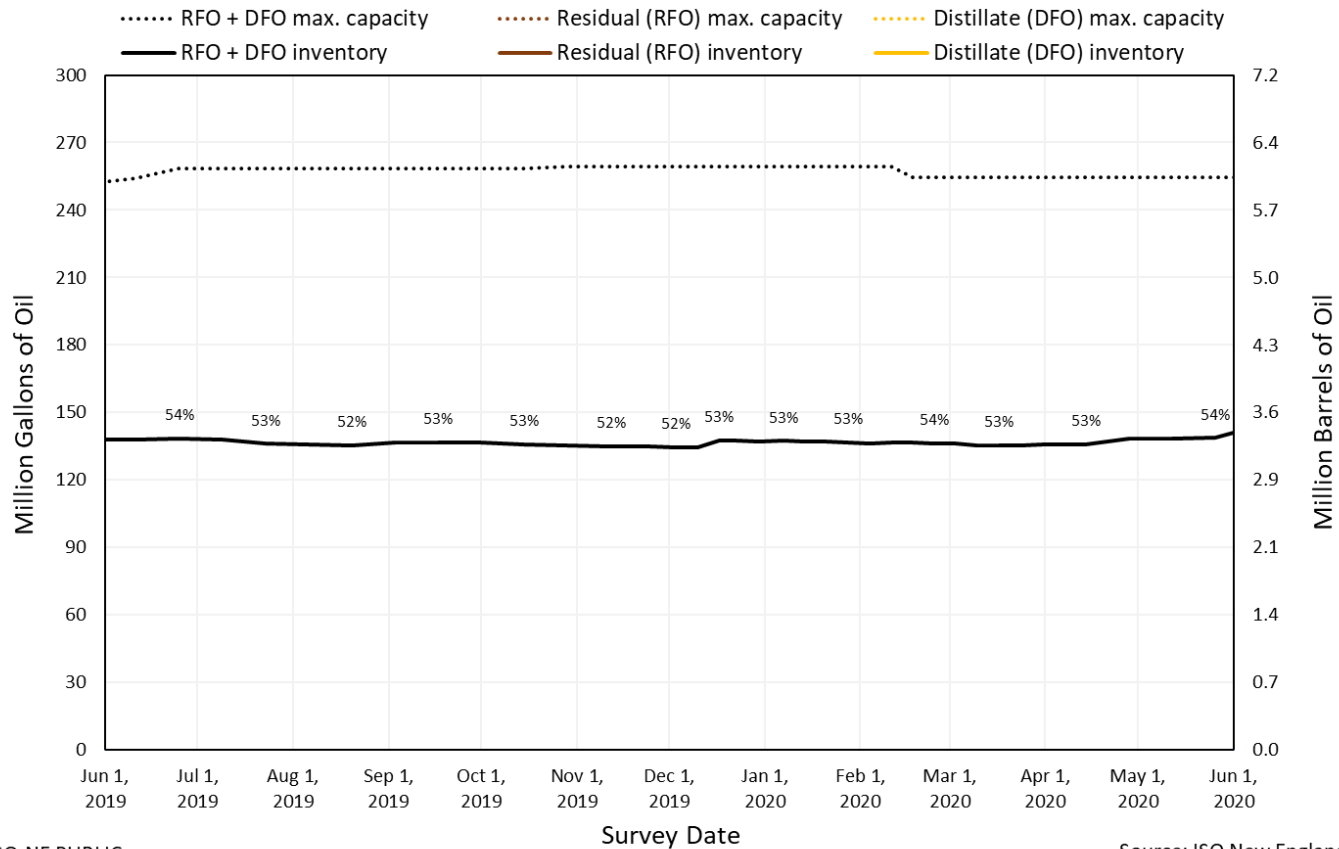
Source: ISO New England

Oil Inventory: 2019-2020

Fuel Oil Usable Inventory: June 2019 - June 2020

Based on OP-21 generator surveys received from market participants

Percentages indicate inventory as % of maximum



ISO-NE PUBLIC

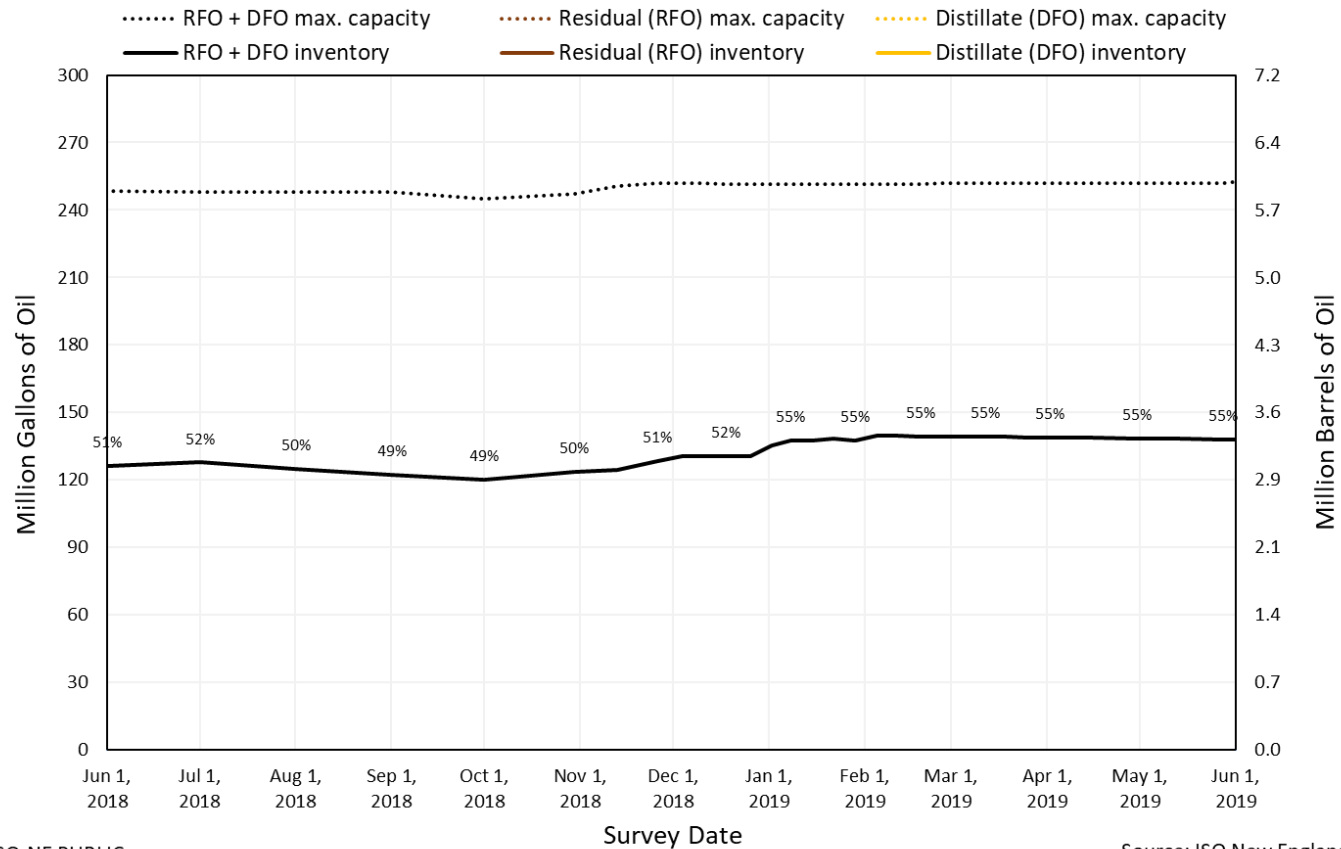
Source: ISO New England

Oil Inventory: 2018-2019

Fuel Oil Usable Inventory: June 2018 - June 2019

Based on OP-21 generator surveys received from market participants

Percentages indicate inventory as % of maximum



ISO-NE PUBLIC

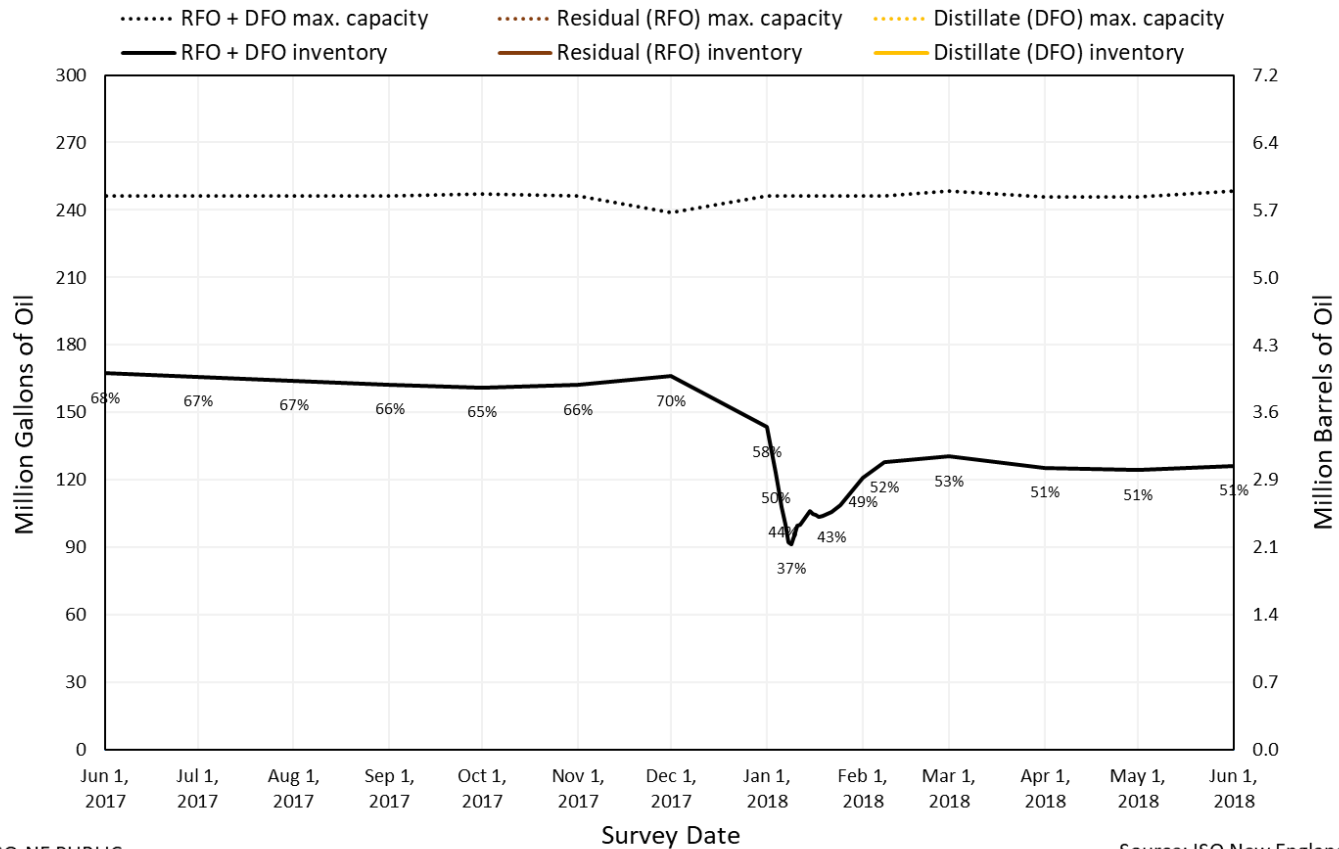
Source: ISO New England

Oil Inventory: 2017-2018

Fuel Oil Usable Inventory: June 2017 - June 2018

Based on OP-21 generator surveys received from market participants

Percentages indicate inventory as % of maximum



ISO-NE PUBLIC

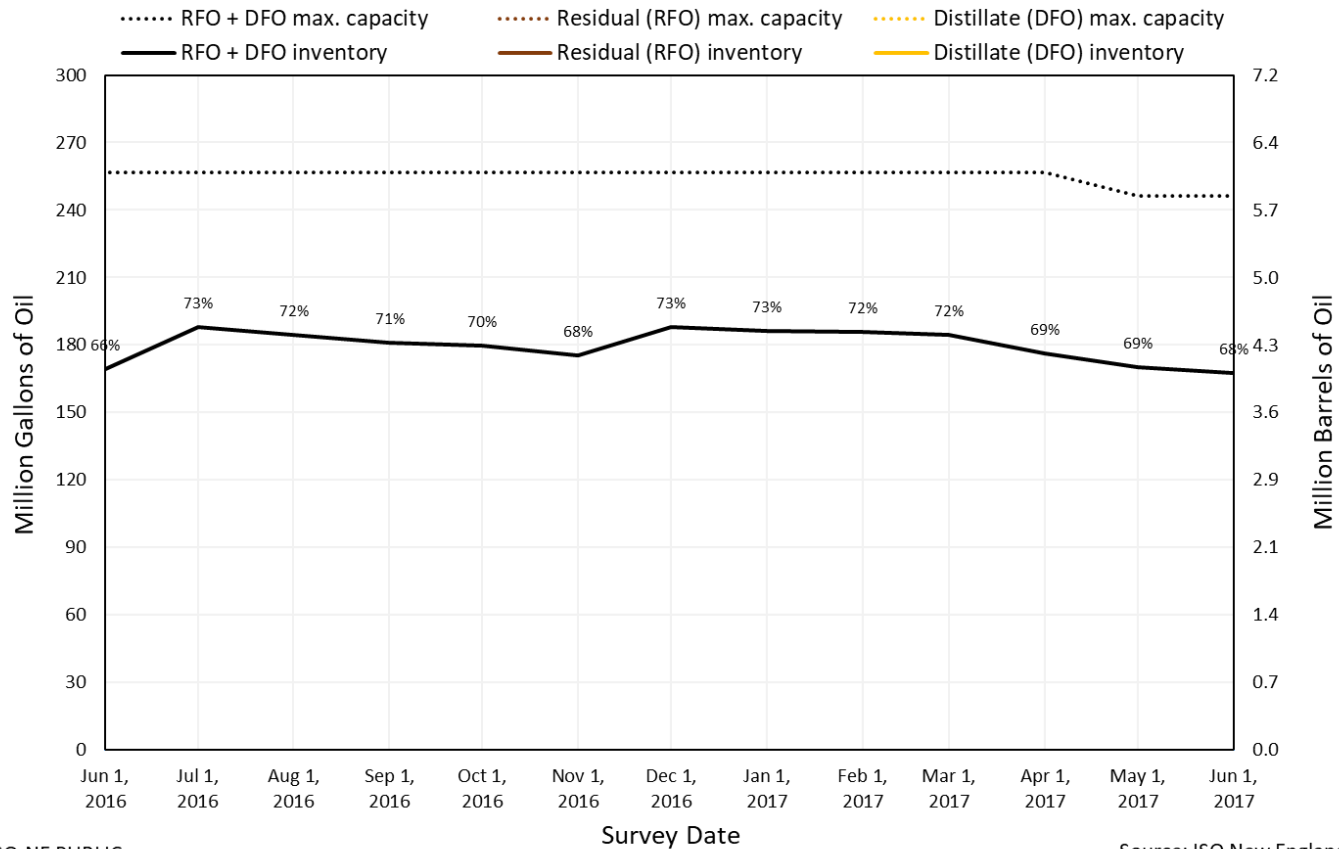
Source: ISO New England

Oil Inventory: 2016-2017

Fuel Oil Usable Inventory: June 2016 - June 2017

Based on OP-21 generator surveys received from market participants

Percentages indicate inventory as % of maximum



ISO-NE PUBLIC

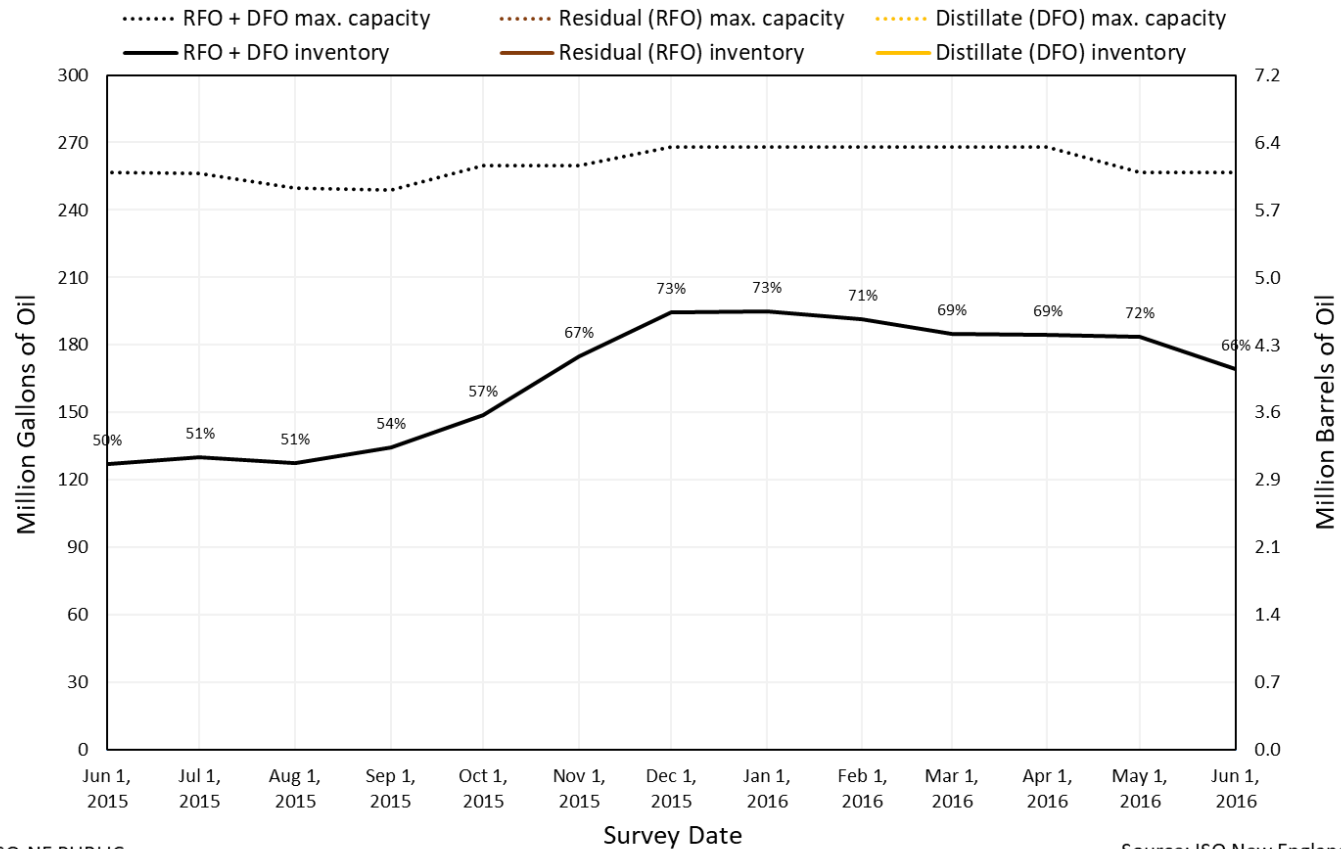
Source: ISO New England

Oil Inventory: 2015-2016

Fuel Oil Usable Inventory: June 2015 - June 2016

Based on OP-21 generator surveys received from market participants

Percentages indicate inventory as % of maximum



ISO-NE PUBLIC

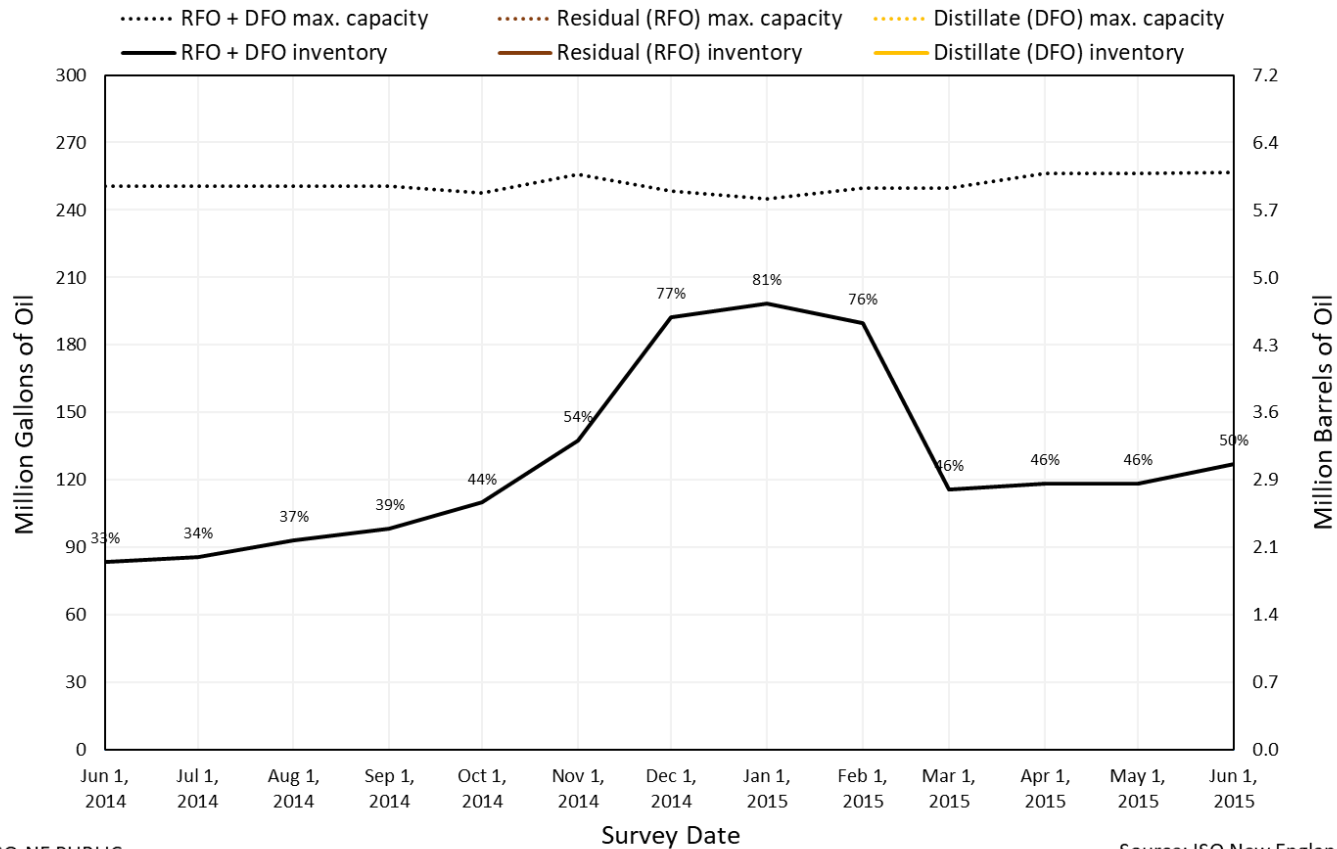
Source: ISO New England

Oil Inventory: 2014-2015

Fuel Oil Usable Inventory: June 2014 - June 2015

Based on OP-21 generator surveys received from market participants

Percentages indicate inventory as % of maximum



ISO-NE PUBLIC

Source: ISO New England

HISTORICAL ARCHIVE: OIL BURN AND REFILL

Slides ordered by reverse chronological

RFO/DFO breakdown not recorded before Dec. 2021

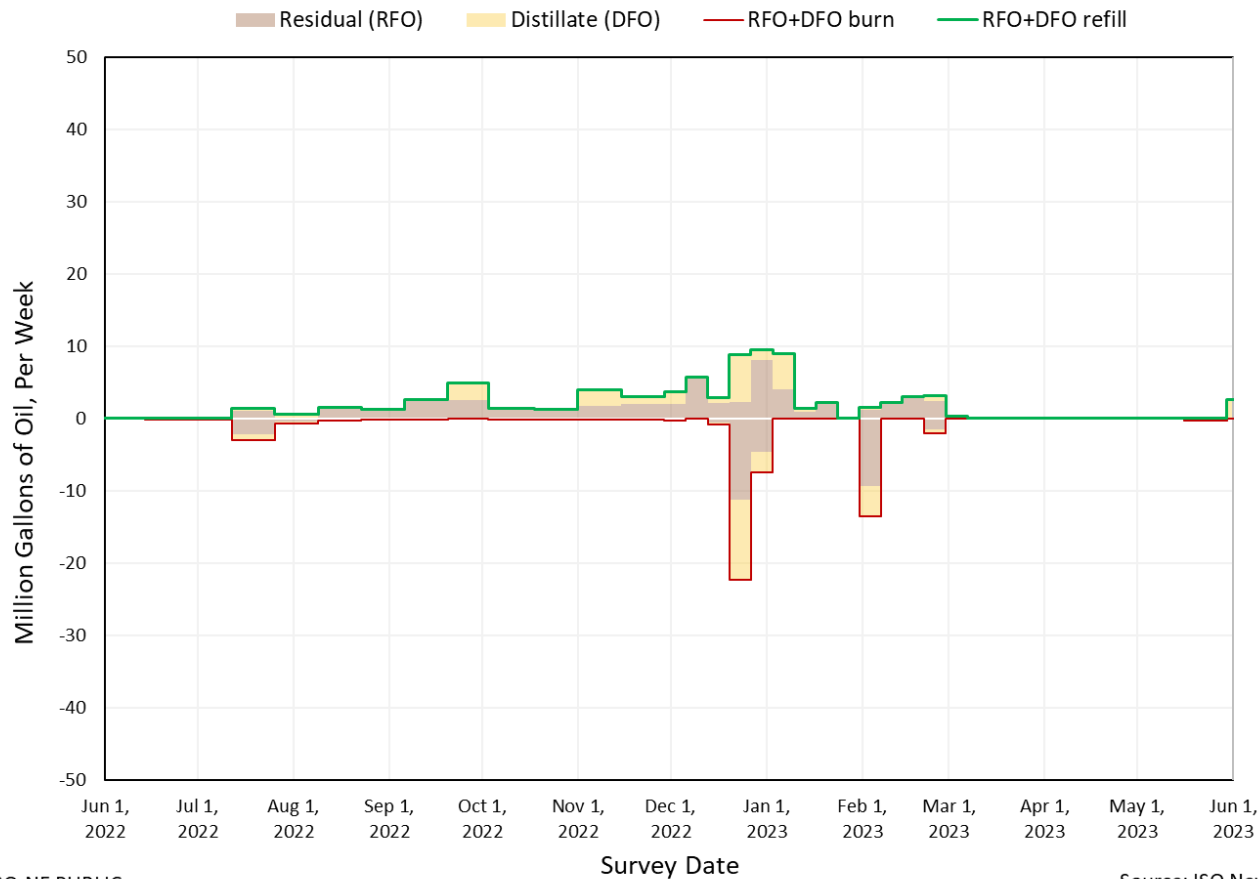
Data collected monthly before winter 2018/2019



Oil Burn and Refill: 2022-2023

Fuel Oil Burned and Refilled Per Week: June 2022 - June 2023

Based on OP-21 generator surveys received from market participants



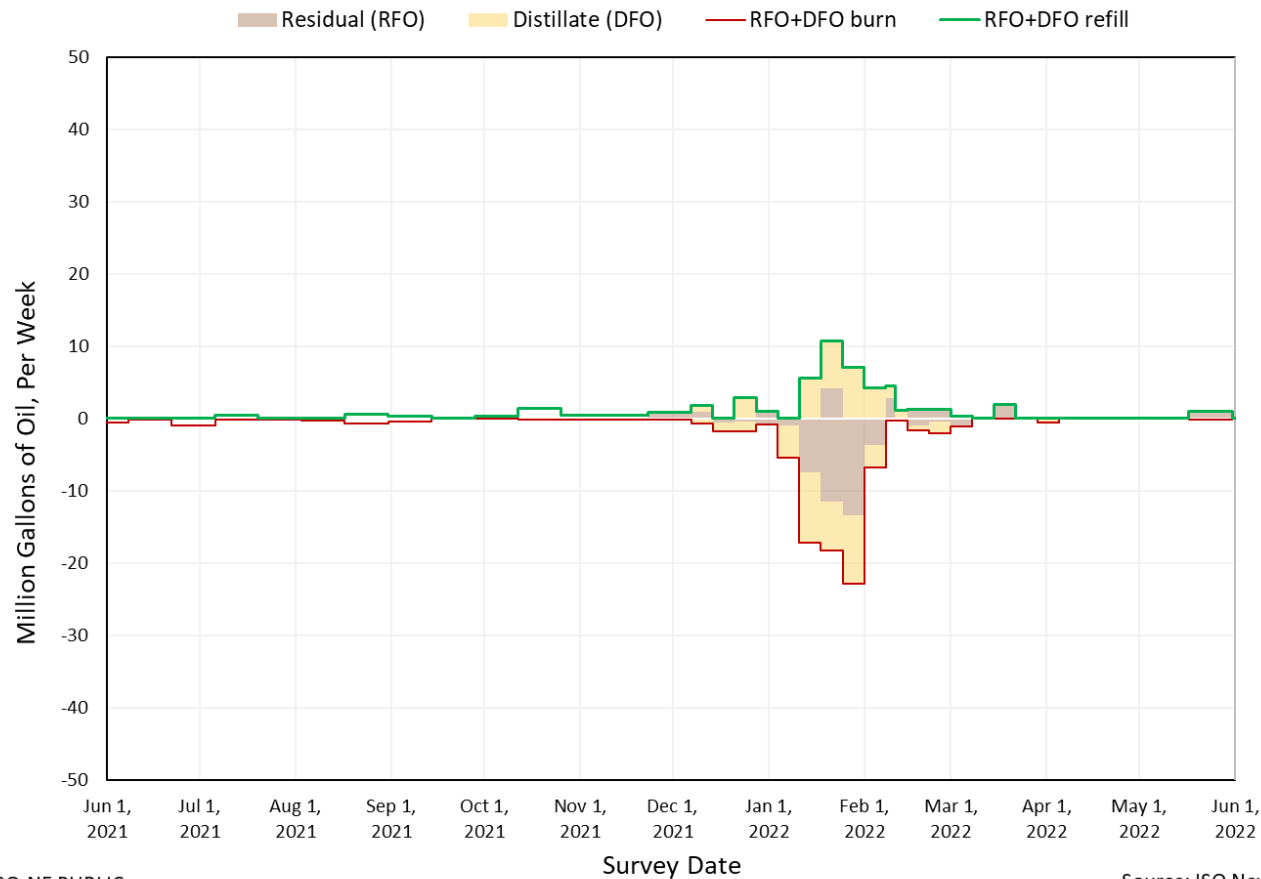
ISO-NE PUBLIC

Source: ISO New England

Oil Burn and Refill: 2021-2022

Fuel Oil Burned and Refilled Per Week: June 2021 - June 2022

Based on OP-21 generator surveys received from market participants



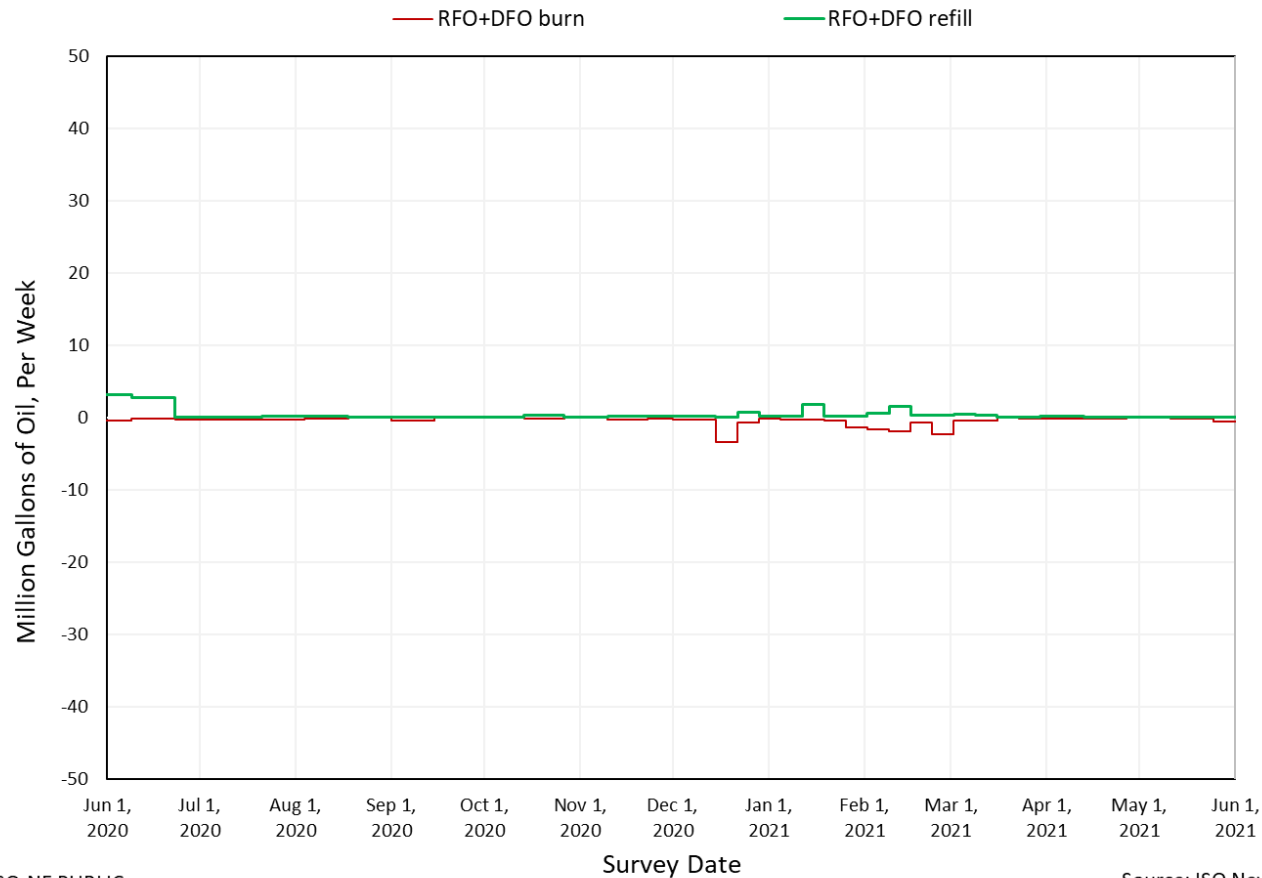
ISO-NE PUBLIC

Source: ISO New England

Oil Burn and Refill: 2020-2021

Fuel Oil Burned and Refilled Per Week: June 2020 - June 2021

Based on OP-21 generator surveys received from market participants



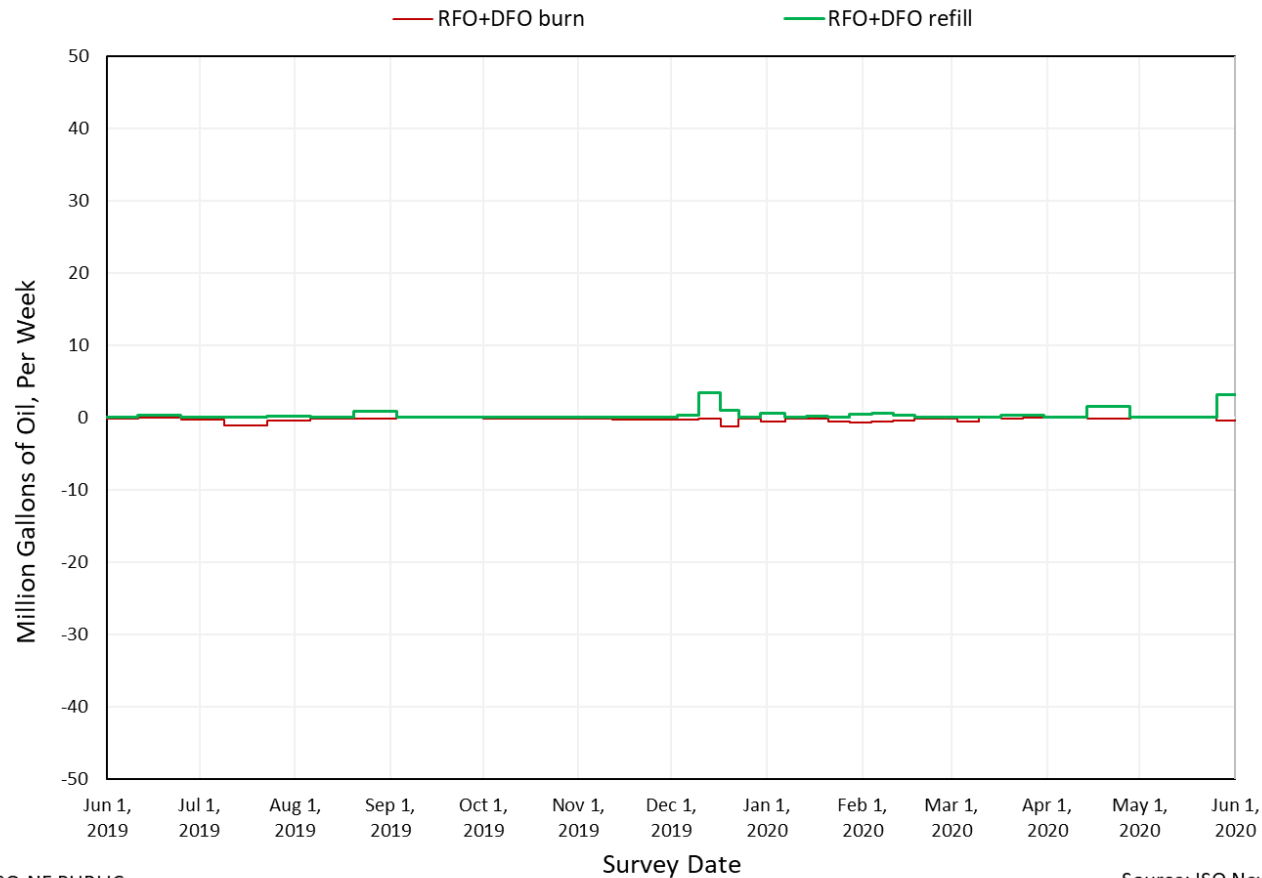
ISO-NE PUBLIC

Source: ISO New England

Oil Burn and Refill: 2019-2020

Fuel Oil Burned and Refilled Per Week: June 2019 - June 2020

Based on OP-21 generator surveys received from market participants



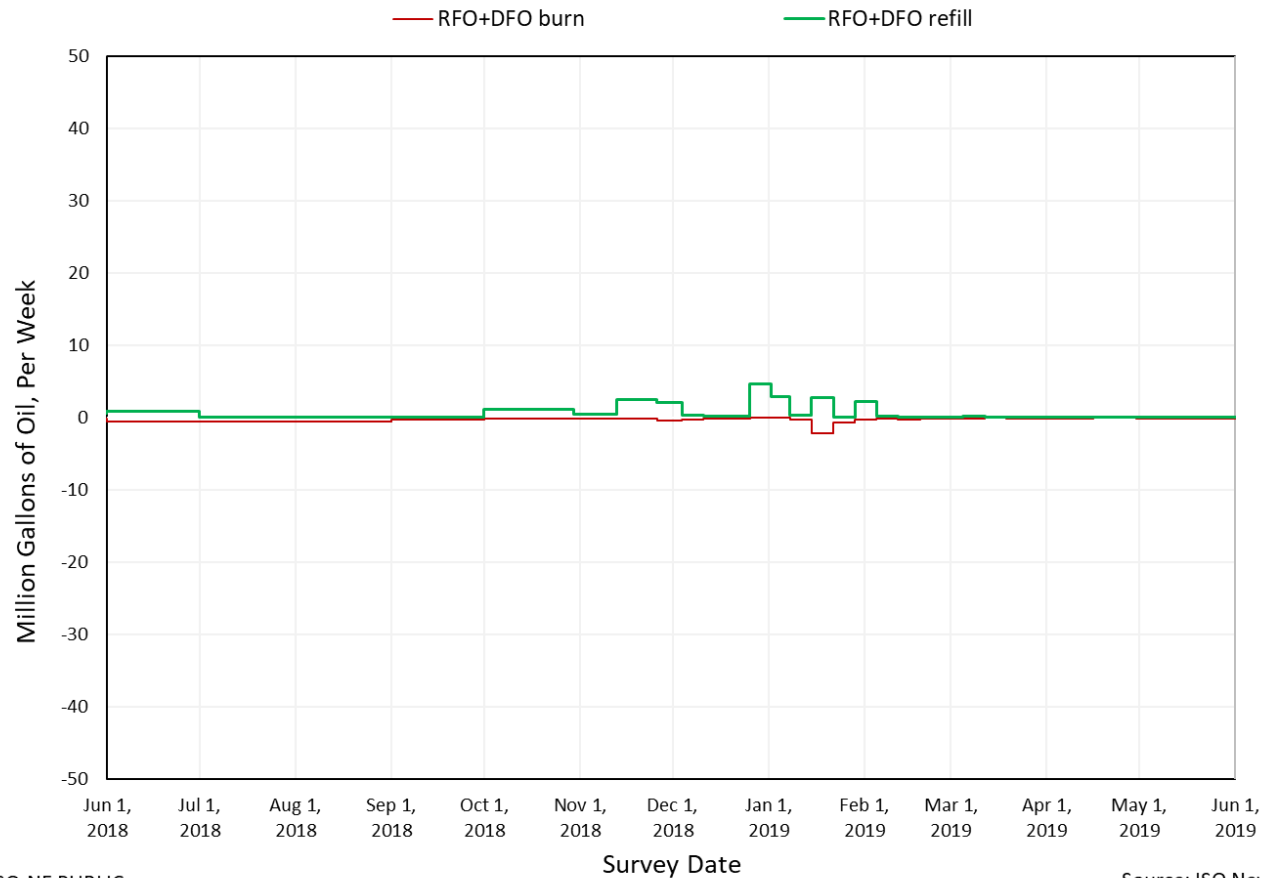
ISO-NE PUBLIC

Source: ISO New England

Oil Burn and Refill: 2018-2019

Fuel Oil Burned and Refilled Per Week: June 2018 - June 2019

Based on OP-21 generator surveys received from market participants



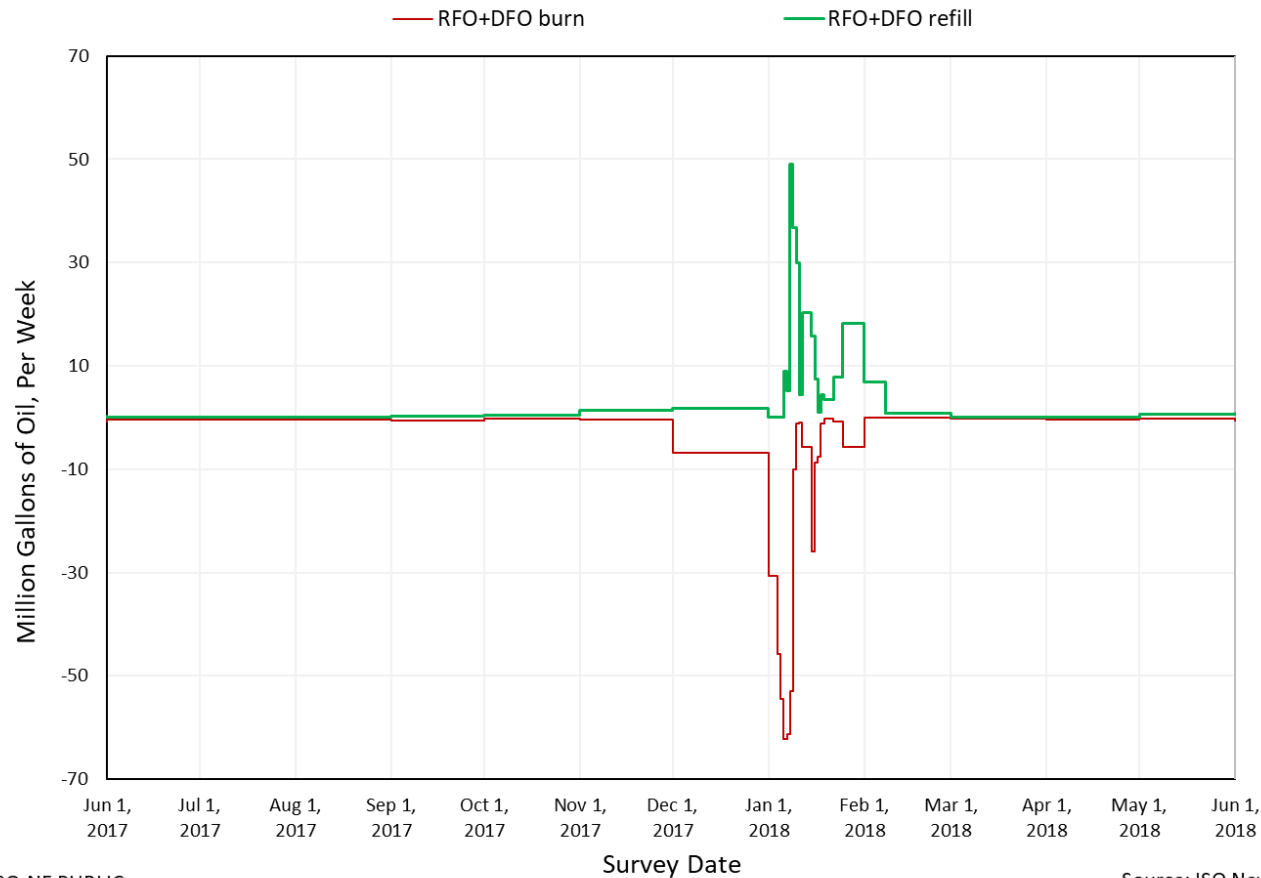
ISO-NE PUBLIC

Source: ISO New England

Oil Burn and Refill: 2017-2018

Fuel Oil Burned and Refilled Per Week: June 2017 - June 2018

Based on OP-21 generator surveys received from market participants



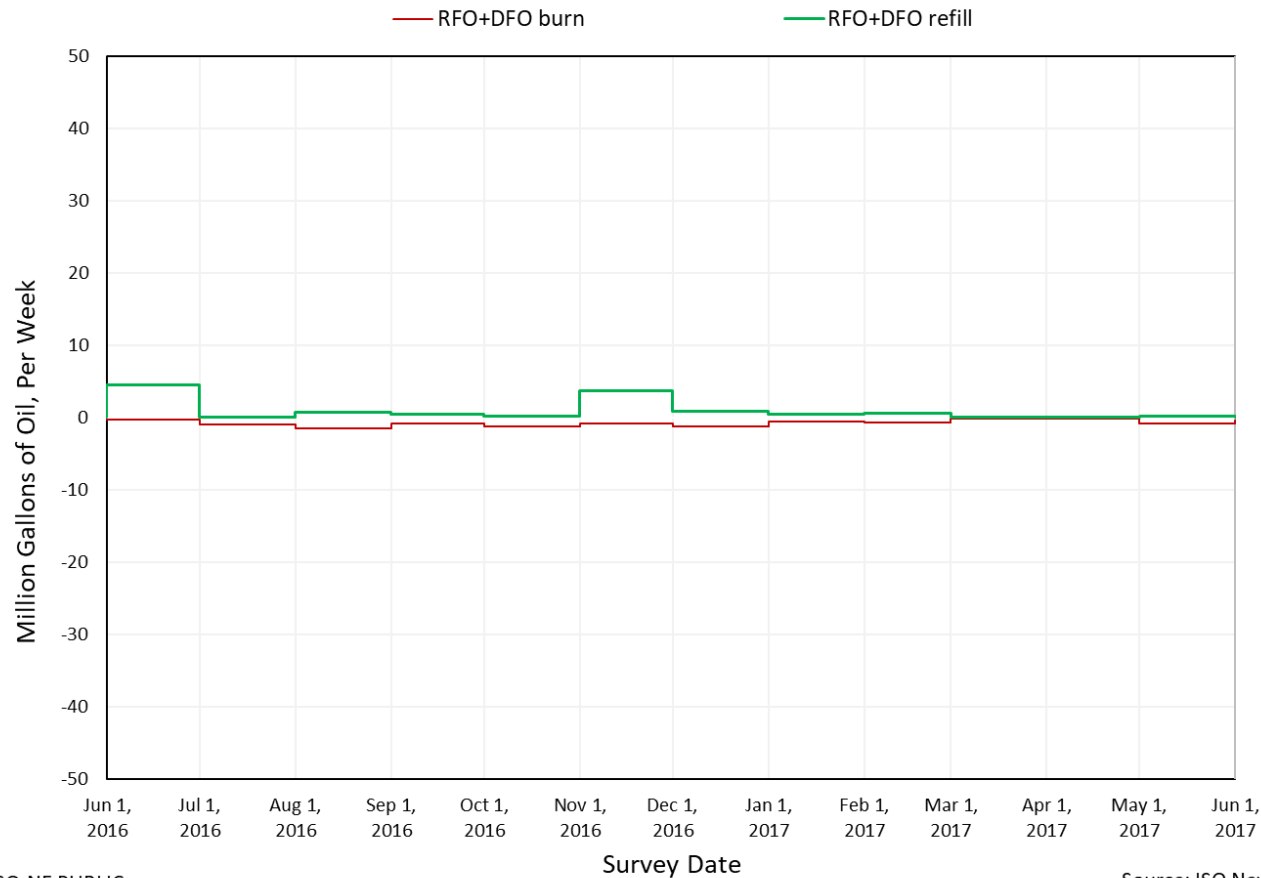
ISO-NE PUBLIC

Source: ISO New England

Oil Burn and Refill: 2016-2017

Fuel Oil Burned and Refilled Per Week: June 2016 - June 2017

Based on OP-21 generator surveys received from market participants



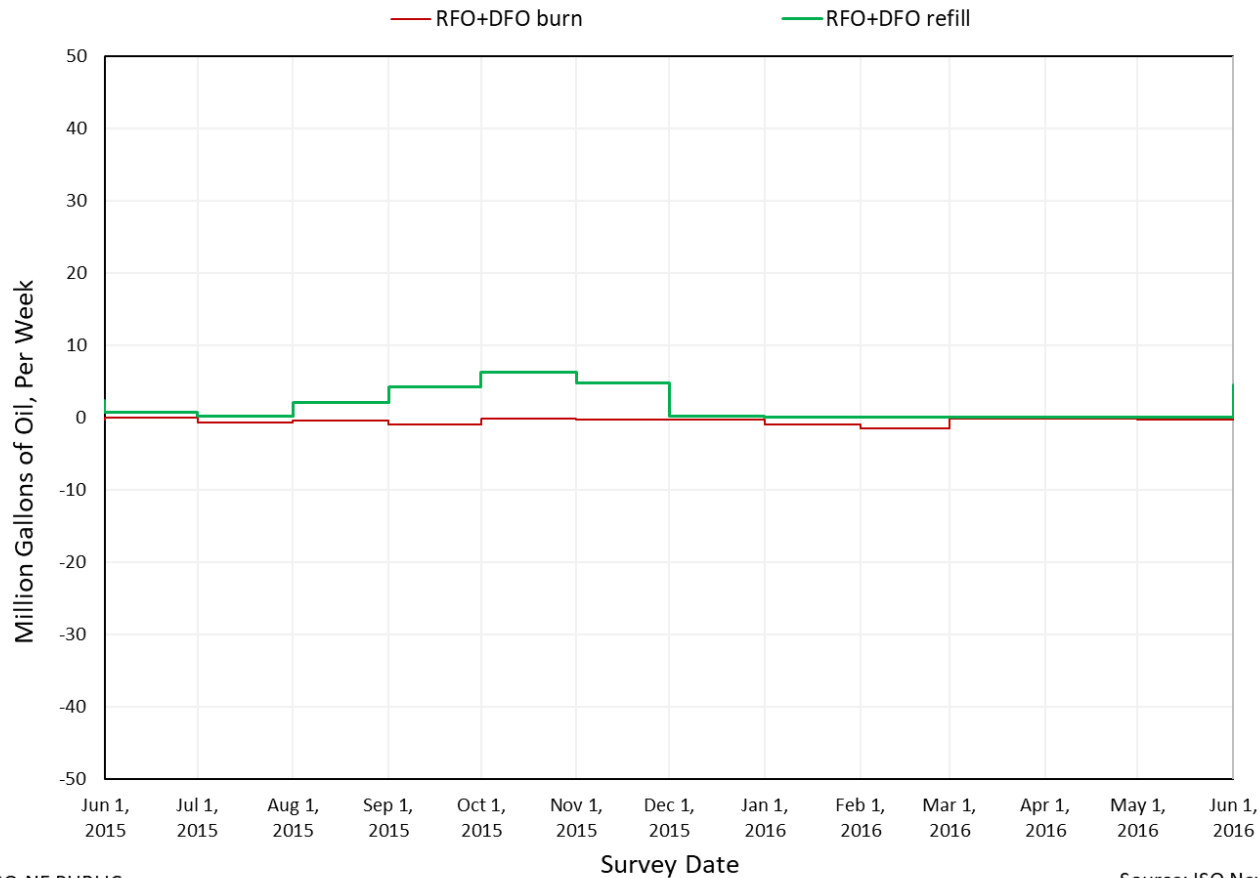
ISO-NE PUBLIC

Source: ISO New England

Oil Burn and Refill: 2015-2016

Fuel Oil Burned and Refilled Per Week: June 2015 - June 2016

Based on OP-21 generator surveys received from market participants



ISO-NE PUBLIC

Source: ISO New England