

December 2024 DER Photovoltaic Interconnection Data Update

Distributed Generation Forecast Working Group



Tim Costa

SENIOR LOAD FORECASTING ANALYST, SYSTEM PLANNING



DECEMBER 2024 DER PHOTOVOLTAIC INSTALLATION UPDATE



Determining Cumulative DER PV Totals

December 2024 DER PV Interconnection Data

- Starting this year, Distribution Owners and/or Transmission Owners are required to submit distributed energy resource (DER) interconnection data to satisfy requirements outlined in ISO-New England's [Planning Procedure 12](#) (PP12)
 - The data included herein focus on draft DER solar photovoltaic (PV) interconnection data as of December 31, 2024
 - These data have been used to inform ISO New England's draft 2025 long-term PV forecast
 - Data will be updated ahead of the [March 24, 2025 DGFWG Meeting](#) to reflect on-going data quality improvement efforts
 - PV projects include FCM, OER, and BTM PV projects
- To more easily compare the December 2024 DER PV data with previously collected data, the following company's PP12 submittals are tabulated in subsequent slides:
 - CT: CL&P, CMEEC, UI
 - ME: CMP, Versant
 - MA: Braintree, Chicopee, Reading, National Grid, NSTAR, Shrewsbury, Unitil, WMECO
 - NH: Liberty, NHEC, PSNH, Unitil
 - RI: Rhode Island Energy
 - VT: Burlington, GMP, Stowe, VEC, VPPSA, WEC
- More companies than those listed above submitted PP12 data for December 2024 and will be included in future DER interconnection updates
 - Data included herein are expected to reflect the vast majority of DER PV interconnected throughout the region
- Thank you to the data providers for your continued efforts to ensure timely and accurate data submittals

December 2024 Cumulative DER PV Totals

State-by-State

The table below reflects statewide aggregated PV data provided to ISO New England by regional Distribution Owners and/or Transmission Owners. The values represent installed nameplate as of 12/31/2024

State	Installed Capacity (MW _{AC})	No. of Installations
Massachusetts*	3,929	204,635
Connecticut	1,269	106,831
Vermont*	537	22,486
New Hampshire	274	24,076
Rhode Island	454	25,224
Maine	1,096	16,265
New England	7,558	399,517

* Includes values based on MA SREC data or VT SPEED data

December 2024 Cumulative DER PV Totals (1 of 2)

Summary of PP12 DER PV Data

State	Utility	Installed Capacity (MW _{AC})	No. of Installations
CT	Connecticut Light & Power	1,024	82,390
	Connecticut Municipal Electric Energy Co-op	19	921
	United Illuminating	226	23,520
	Total	1,269	106,831
MA	Braintree Electric Light Department	6	54
	Chicopee Electric Light	13	63
	Unitil (FG&E)	55	3,714
	National Grid	2,302	111,429
	NSTAR	1,236	66,642
	Reading Municipal Lighting Plant	9	317
	Shrewsbury Electric & Cable Operations	7	173
	SREC I	54	589
	SREC II	97	1,672
	Western Massachusetts Electric Company	420	19,982
	Total	3,929	204,635
ME	Central Maine Power	884	14,039
	Versant*	212	2,226
	Total	1,096	16,265

* Does not include installations in Maine Public District

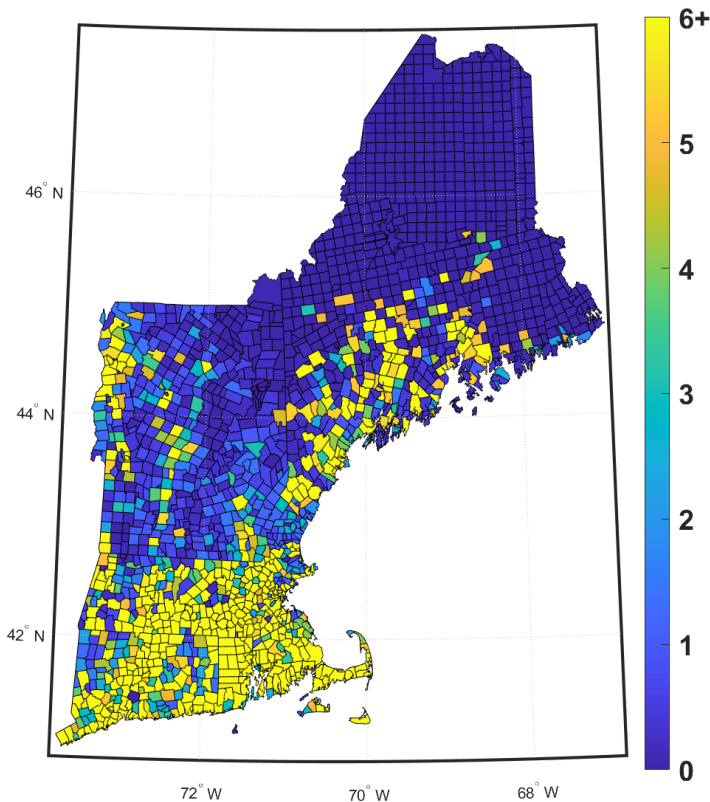
December 2024 Cumulative DER PV Totals (2 of 2)

Summary of PP12 DER PV Data

State	Utility	Installed Capacity (MW _{AC})	No. of Installations
NH	Liberty Utilities	23	1,816
	New Hampshire Electric Co-op	24	2,204
	Public Service of New Hampshire	199	17,467
	Unitil (UES)	28	2,589
	Total	274	24,076
RI	Rhode Island Energy	454	25,224
	Total	454	25,224
VT	Burlington Electric Department	10	436
	Green Mountain Power	446	17,334
	Stowe Electric Department	3	152
	Vermont Electric Co-op	48	2,749
	Vermont Public Power Supply Authority	21	858
	Washington Electric Co-op	8	957
	Total	537	22,486
New England		7,558	399,517

Installed DER PV Capacity as of December 2024

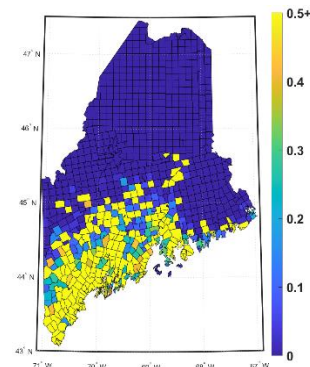
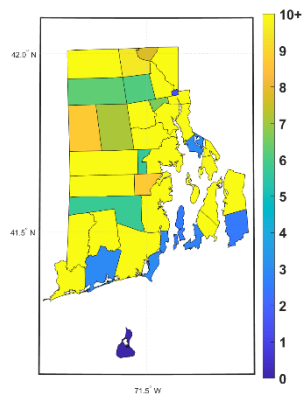
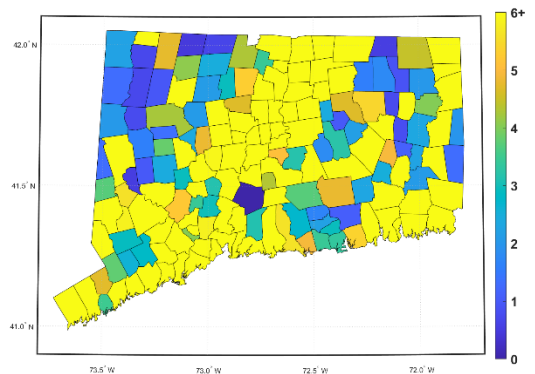
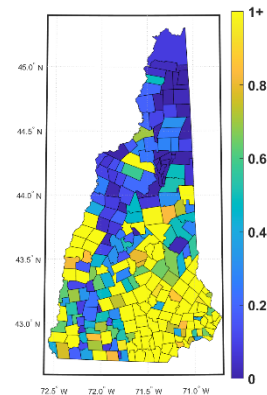
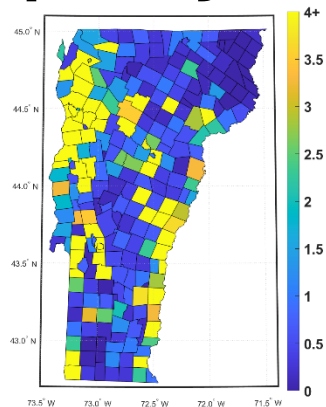
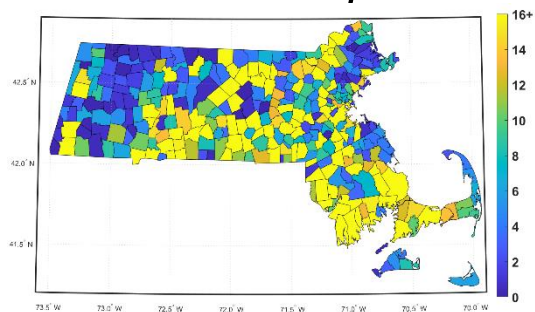
Regional Heat Map



Note: Legend to the right of the heat map shows color scale of nameplate megawatts per town

Installed DER PV Capacity as of December 2024

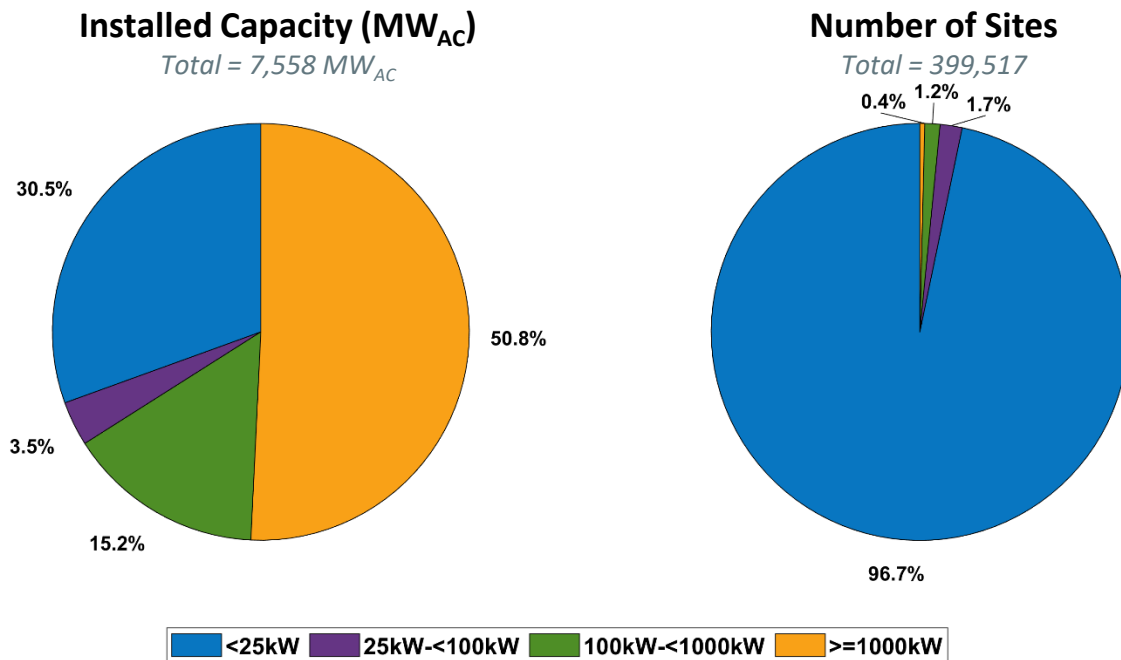
State Heat Maps



Note: Legend to the right of each state plot shows color scale of nameplate megawatts per town

Installed DER PV Capacity as of December 2024

ISO-NE by Size Class



Questions

