

# Weekly Market Summary

April 13-19, 2026



## About this Report

This report contains eleven sections. They are:

- 1) The [\*Weekly Highlights\*](#) section provides brief explanations of notable events that occurred during the week. The tables provided show market results for the current week, prior week, the same week a year ago, and the percentage change this week vs. the prior week and prior year. The highlights also include a detailed explanation of the Day-Ahead and Real-Time price separation for the current week, along with any Real-Time price corrections.
- 2) The [\*Pricing\*](#) section contains various graphs presenting information about Locational Marginal Prices (LMPs) and its components for the Hub, Load Zones, and external nodes. A table showing descriptive LMP statistics for these locations is also provided.
- 3) The [\*Weekly Demand\*](#) section contains a table describing total Day-Ahead and Real-Time Load Obligation (DALO & RTLO) for the current week, last week, the percentage change from last week, last year, and the percentage change from last year. In addition, there are graphs showing Day-Ahead demand bids and cleared volumes by type. Also included are tables for daily demand bid and virtual volumes and peak load by day with associated Real-Time pricing.
- 4) The [\*Weekly Supply\*](#) section contains tables and graphs of Day-Ahead Generation Obligation accumulated from generation, virtual supply, and imports. These exhibits also include the Day-Ahead Demand Reduction Obligation. Information on Real-Time supply including, metered generation by fuel type, self-scheduled MWh, Real-Time reliability MWh, marginal price setting, and external interface imports.
- 5) [\*Net Commitment Period Compensation \(NCPC\)\*](#) section includes information and links to the NCPC Summary report.
- 6) The [\*Energy Market Payment\*](#) section contains a table showing the payments associated with the Day-Ahead and Real-Time Energy Markets, a pie chart showing the component percentage of the Day-Ahead Energy Market payment, and a bar chart showing the magnitude of each component's contribution to the total Energy Market payment.
- 7) The [\*Flexible Response Services \(FRS\)\*](#) section contains tables and graphs related to the FRS clearing rate, the associated closeout charges, cleared FRS product MWh, and FRS payments.
- 8) The [\*Forecast Energy Requirement \(FER\) and Energy Imbalance Reserves \(EIR\)\*](#) section contains tables and graphs related to the Forecast Energy Reserve Price (FERP), FER and EIR Obligation MWh, and FER and EIR payments and closeout charges.
- 9) The [\*Real-Time Reserve Market\*](#) section contains a table showing the Real-Time Reserve payments by Reserve Zone, two tables with Real-Time Reserve Clearing Prices data, and a table with information related to Real-Time reserve bias implementation.
- 10) The [\*Capacity Scarcity Condition \(CSC\)\*](#) section contains preliminary details of any CSC activity that may have occurred during the week.

- 11) The last section of the report, the [Glossary and Links](#) section, contains additional information concerning the sections listed above, including links to relevant pages on the ISO New England web site.

Note: A supplemental Excel file 'Weekly Market Data 53 Weeks.XLSX', located [here](#), contains the past 53 weeks of data of various concepts including market prices, payments, charges, and MWh values.

🔗 Click this icon in the section header to navigate to the glossary section, where definitions are described in more detail, with links to the ISO New England web site.

## Weekly Highlights: April 13-19, 2026

### 1.1 Weekly Highlights

#### Notable Events

- Real-Time LMPs in excess of \$125/MWh were caused by binding reserve constraints and loads over the forecast in the hour ending 8:00 p.m. on Friday, April 17.

<a href="#">Locational Marginal Pricing (LMPs)</a>	This Week	Last Week	% Chg vs. Prior Week	Last Year	% Chg vs. Prior Year
<b>New England Hub; \$/MWh; Average</b>					
Day-Ahead Energy Market; All Hours	\$51.70	\$43.61	18.6%	\$37.45	38.1%
*Real-Time Energy Market; All Hours	\$51.29	\$41.02	25.0%	\$33.46	53.3%

\*This is the average of the 5-minute pricing intervals within the week.

<a href="#">Weekly Demand Statistics (MWh)</a>	This Week	Last Week	% Chg vs. Prior Week	Last Year	% Chg vs. Prior Year
Revenue Quality System Peak Load (MW - Initial)	14,468	14,826	-2.4%	14,132	2.4%
DA Load Obligation (All Zones)	-1,964,238	-2,014,968	-2.5%	-1,940,218	1.2%
RT Load Obligation (All Zones)	-1,948,198	-1,964,039	-0.8%	-1,851,243	5.2%
DA Cleared Exports (All Interfaces)	-169,789	-139,463	21.7%	-86,846	95.5%
RT Scheduled Exports (All Interfaces)	-295,019	-262,337	12.5%	-191,053	54.4%

<a href="#">Weekly Supply Statistics</a>	This Week	Last Week	% Chg vs. Prior Week	Last Year	% Chg vs. Prior Year
Input Fuel Price (Natural Gas, \$/MMBtu)	\$2.41	\$2.56	-5.6%	\$3.00	-19.5%
Mass Average Input Fuel Price (Natural Gas, \$/MMBtu)	\$2.28	\$2.45	-6.9%	\$2.89	-21.1%
Metered Generation (MWh)	1,835,815	1,863,176	-1.5%	1,721,111	6.7%
Generation Obligation (MWh)	2,284,314	2,269,819	0.6%	2,071,313	10.3%
RT Demand Reduction Obligation (MWh)	12	6	94.4%	80	-85.2%
Self-Scheduled Generation (MWh)	516,842	670,214	-22.9%	638,897	-19.1%
DA Cleared Imports (MWh - All Interfaces)	368,240	336,030	9.6%	285,129	29.1%
RT Scheduled Imports (MWh - All Interfaces)	448,499	406,643	10.3%	350,202	28.1%

<a href="#">Market Payments</a>	This Week	Last Week	% Chg vs. Prior Week	Last Year	% Chg vs. Prior Year
Day-Ahead and Real-Time Energy Market Payments (\$)	\$122,731,108	\$104,356,097	17.6%	\$79,980,259	53.5%
Day-Ahead Ancillary Services Market Payments (\$)	-\$1,069,675	\$3,005,918	-135.6%	\$942,761	-213.5%
Real-Time Reserve Market Payments (\$)	\$68,318	\$2,086	Large	\$30,254	125.8%

Underlying natural gas data furnished by:



### Day-Ahead Price Separation

- On Saturday, April 18, depressed pricing in the Maine (ME) Load Zone was caused by a binding constraint on the Maine – New Hampshire Interface due to patterns of load and generation.

### Real-Time Price Separation

- On Friday, April 17, depressed pricing in the ME Load Zone was caused by a binding constraint on the Outer Wyman Export Interface due to patterns of load and generation.
- On Saturday and Sunday, April 18 and 19, depressed pricing in the ME Load Zone was caused by a binding constraint on the Maine – New Hampshire Interface due to patterns of load and generation.

### Real-Time Price Corrections

- None.

### Year-to-Date Peak Load Statistics\*

- [FCM Peak Load](#) (preliminary, subject to change) is 19,937 MW and occurred in the hour ending 1:00 P.M. on Sunday, January 25. At this hour, the Capacity Zone-level FCM peak loads were 2,814 MW in Northern New England, 1,832 MW in Maine, 7,535 MW in Rest-of-Pool, and 7,756 MW in Southeast New England.
- [Revenue Quality System Peak Load](#) (initial) is 20,221 MW and occurred in the hour ending 2:00 P.M. on Sunday, January 25.
- [Telemetered System Peak Load](#) is 20,182 MW and occurred in the hour ending 2:00 P.M. on Sunday, January 25.

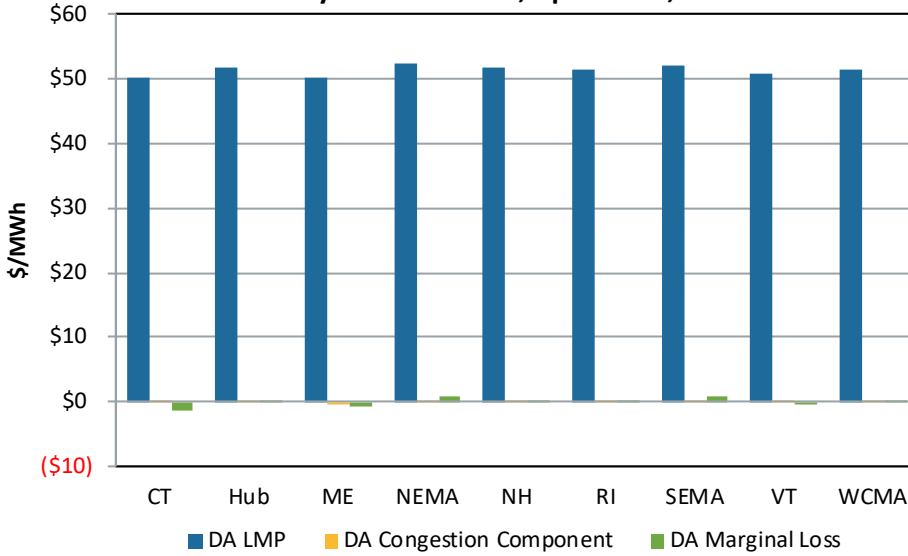
\*Due to the difference in calculation methodologies, these values can occur on different days and hours.

Pricing

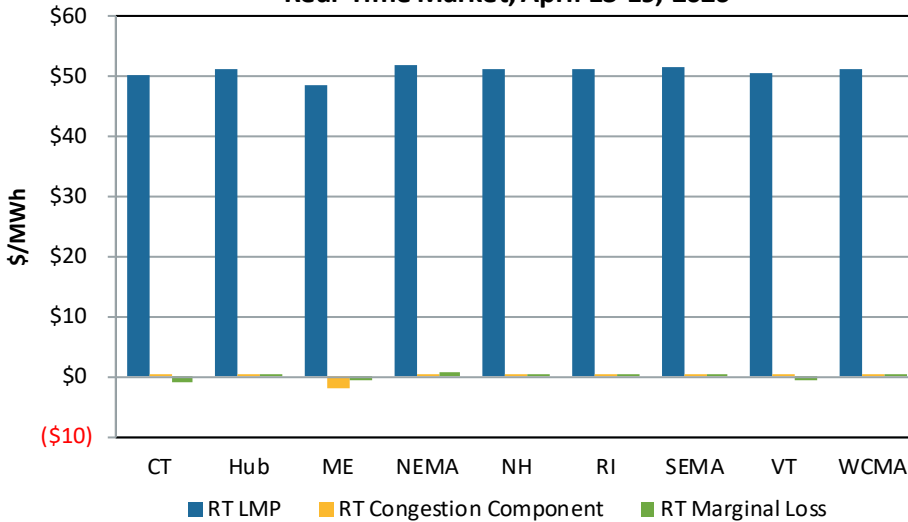
2.1 Pricing

The two graphs below show the weekly average of LMPs, congestion, and marginal loss components at the Hub and Load Zones for both the Day-Ahead and Real-Time Energy Markets.

**Average LMP and Components  
Day-Ahead Market, April 13-19, 2026**

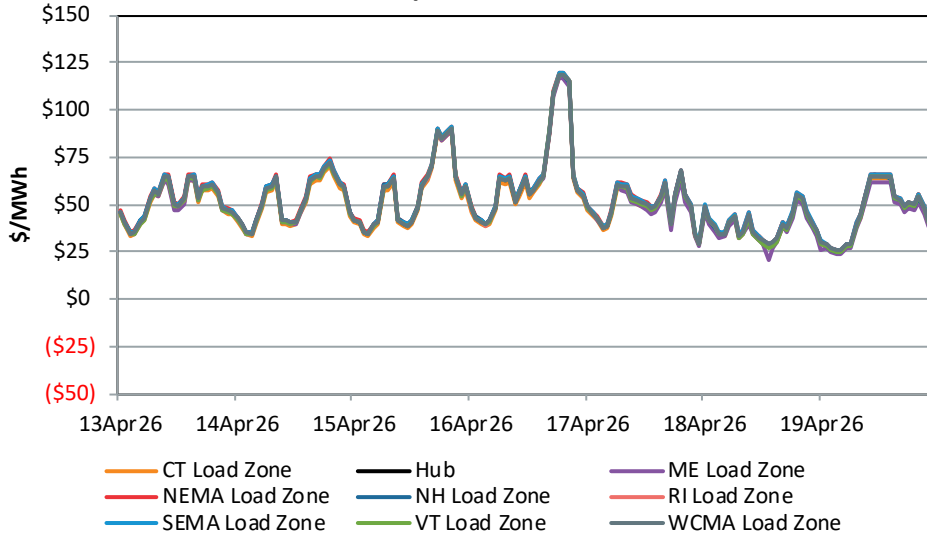


**Average LMP and Components  
Real-Time Market, April 13-19, 2026**

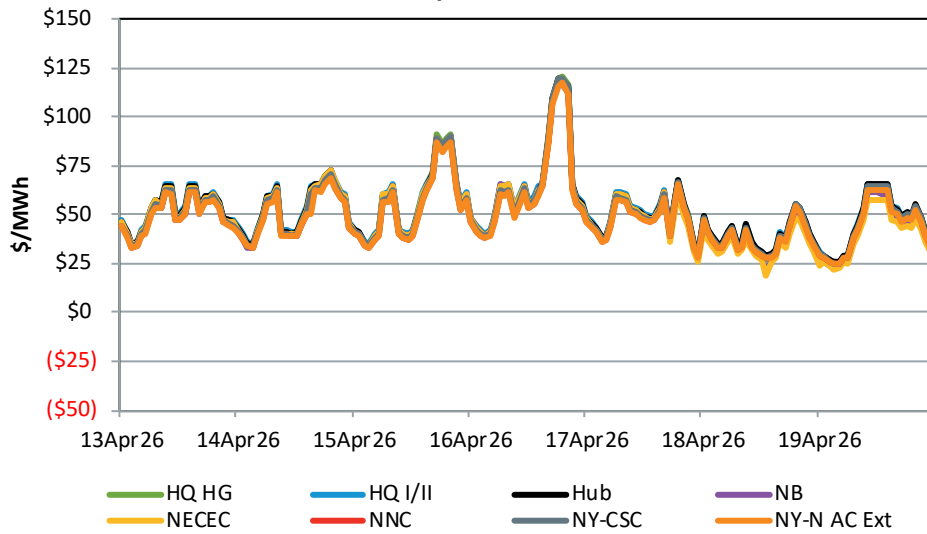


The following two graphs show hourly Day-Ahead LMPs for the Hub, the eight Load Zones, and the seven external nodes. In cases where there is little or no price separation, the lines for multiple locations may be indistinguishable from each other.

**Day-Ahead LMPs for Hub and Load Zones  
April 13-19, 2026**

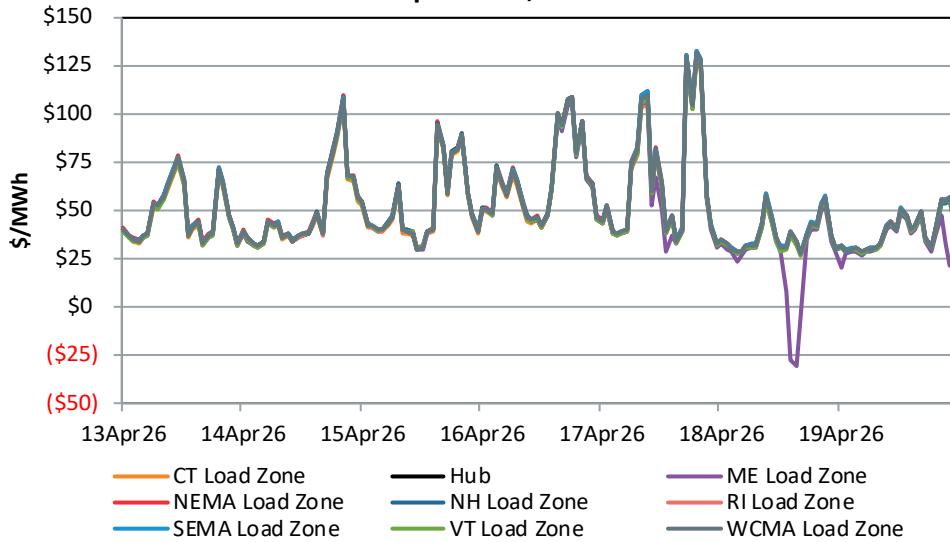


**Day-Ahead LMPs for Hub and External Nodes  
April 13-19, 2026**

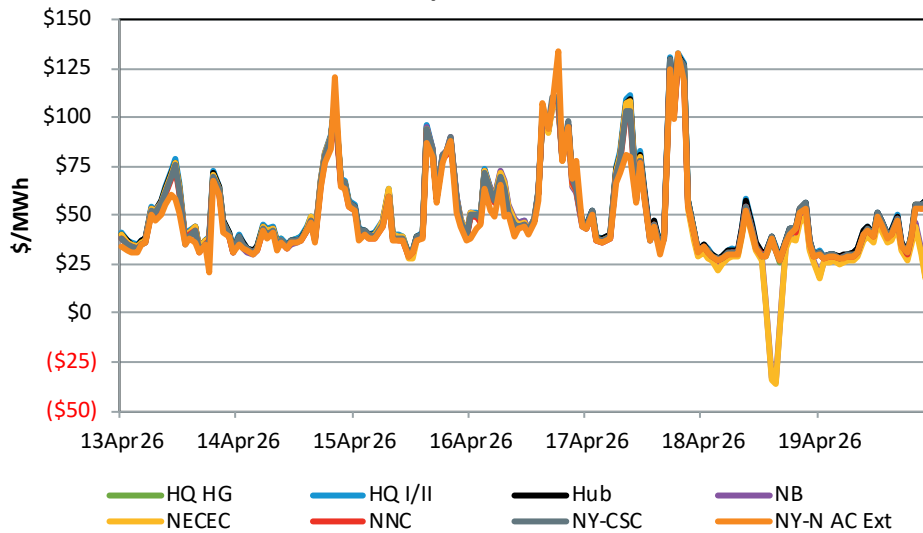


The following two graphs show hourly average Real-Time LMPs for the Hub, the eight Load Zones, and the seven external nodes. The 5-minute LMPs are averaged to create hourly values for comparison. The lines for multiple locations may be indistinguishable from each other.

**Real-Time LMPs for Hub and Load Zones**  
April 13-19, 2026



**Real-Time LMPs for Hub and External Nodes**  
April 13-19, 2026



LMP Summary Statistics, April 13-19, 2026

Hub/Zone/ Ext. Node	Avg DA LMP (\$/MWh)	*Avg RT LMP (\$/MWh)	Min DA LMP (\$/MWh)	Min RT LMP (\$/MWh)	Max DA LMP (\$/MWh)	Max RT LMP (\$/MWh)	DA as % of Hub	*RT as % of Hub	*RT as % of DA	DA Std Dev	*RT Std Dev	*RT Std/DA Std
Hub	\$51.70	\$51.29	\$25.52	\$27.67	\$118.99	\$131.22	100%	100%	99%	16.43	22.13	135%
ME	\$50.26	\$48.48	\$20.83	\$-30.81	\$117.13	\$130.13	97%	95%	96%	16.59	24.20	146%
NH	\$51.67	\$51.31	\$25.03	\$27.16	\$118.87	\$131.79	100%	100%	99%	16.61	22.33	134%
VT	\$50.97	\$50.54	\$24.97	\$26.40	\$118.91	\$130.45	99%	99%	99%	16.58	22.07	133%
CT	\$50.15	\$50.11	\$24.88	\$27.02	\$117.57	\$128.37	97%	98%	100%	16.22	21.82	134%
RI	\$51.51	\$51.15	\$25.64	\$27.68	\$118.89	\$131.43	100%	100%	99%	16.41	22.20	135%
SEMA	\$52.20	\$51.68	\$25.88	\$27.97	\$119.70	\$132.28	101%	101%	99%	16.52	22.32	135%
WCMA	\$51.62	\$51.32	\$25.43	\$27.60	\$118.97	\$131.36	100%	100%	99%	16.45	22.18	135%
NEMA	\$52.41	\$51.97	\$25.65	\$27.90	\$119.90	\$132.76	101%	101%	99%	16.61	22.44	135%
NB Ext	\$49.97	\$48.27	\$19.98	\$-35.54	\$117.51	\$128.94	97%	94%	97%	16.81	24.79	147%
NY-N AC Ext	\$49.25	\$48.34	\$24.45	\$20.45	\$117.00	\$134.01	95%	94%	98%	16.01	22.01	137%
HQ Ext	\$52.18	\$51.85	\$25.30	\$27.84	\$118.61	\$132.38	101%	101%	99%	16.40	22.31	136%
HG Ext	\$51.13	\$50.59	\$24.91	\$26.25	\$119.98	\$131.10	99%	99%	99%	16.82	22.20	132%
CSC Ext	\$50.57	\$50.64	\$24.98	\$26.87	\$119.43	\$130.59	98%	99%	100%	16.51	22.30	135%
NNC Ext	\$49.67	\$49.70	\$24.67	\$26.82	\$117.36	\$127.66	96%	97%	100%	16.18	21.71	134%
NECEC Ext	\$49.64	\$48.11	\$18.83	\$-36.71	\$117.34	\$130.19	96%	94%	97%	17.12	25.19	147%

\*This is the average of the 5-minute pricing intervals within the week.

5-Minute LMP Summary (RT Only)  
April 13-19, 2026

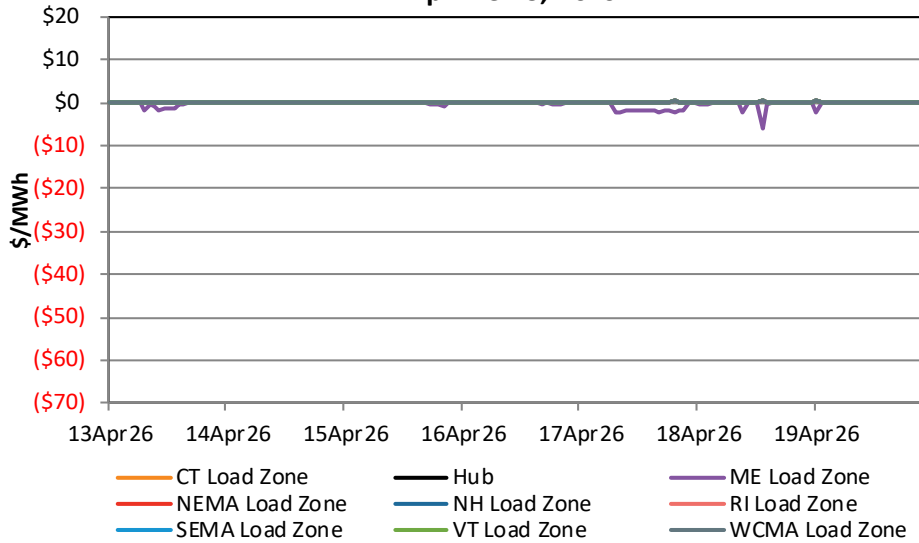
Hub/Zone	Max RT LMP (\$/MWh)	Min RT LMP (\$/MWh)	RT Std Dev	RT as % of Hub
Hub	\$216.64	\$24.87	\$24.24	100%
ME	\$206.44	-\$33.57	\$26.17	93%
NH	\$215.62	\$24.51	\$24.43	100%
VT	\$212.97	\$23.80	\$24.12	98%
CT	\$214.05	\$24.23	\$23.86	98%
RI	\$216.95	\$24.84	\$24.30	100%
SEMA	\$218.35	\$25.13	\$24.44	101%
WCMA	\$216.76	\$24.82	\$24.28	100%
NEMA	\$218.51	\$25.11	\$24.58	101%

5-Minute Energy Component of LMP  
April 13-19, 2026

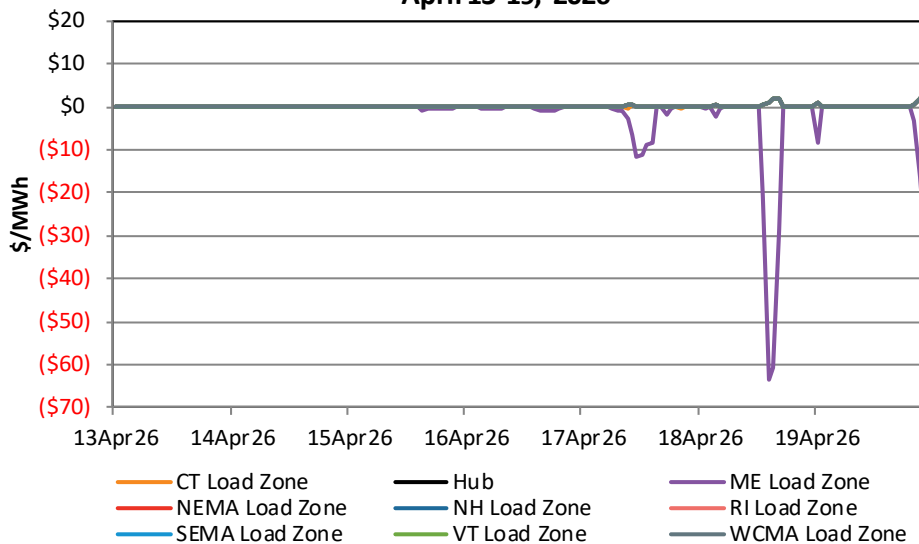
Frequency Tabulation	< \$0.00	\$0.00 - \$20.99	\$21.00 - \$40.99	\$41.00 - \$70.99	\$71.00 - \$100.99	\$100.00 - \$150.99	\$150.00 - \$200.99	\$200.00 - \$500.99	\$500.00 - \$1000.99	> \$1000.99
5-Minute Energy	0.0%	0.0%	46.3%	36.2%	11.8%	5.3%	0.3%	0.2%	0.0%	0.0%

The next two graphs show hourly Day-Ahead and hourly Real-Time congestion components for the Hub and each of the eight Load Zones. The 5-minute values are averaged to create hourly values for comparison. The lines for multiple locations may be indistinguishable from each other.

**Day-Ahead Congestion Component for Hub and Load Zones  
April 13-19, 2026**



**Real-Time Congestion Component for Hub and Load Zones  
April 13-19, 2026**



## Energy Market Demand

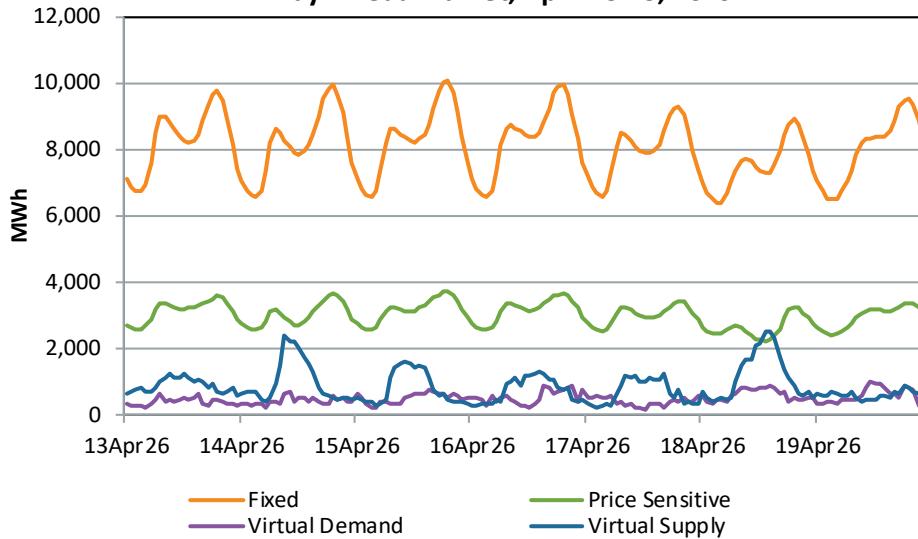
### 3.1 Day-Ahead Demand

The following table displays the Day-Ahead Load Obligation at the Hub, Load Zones, and external nodes for this week, last week, the same week a year ago and the percentage change for each.

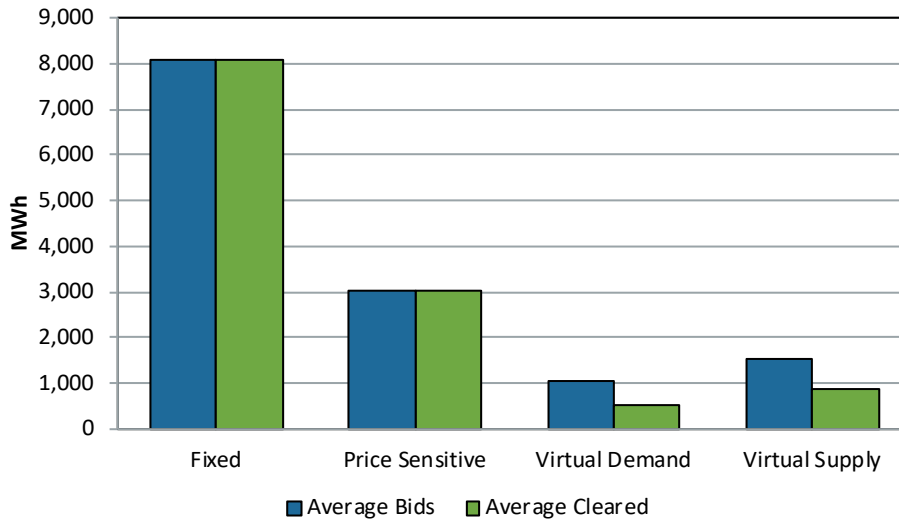
Location	This Week (MWh)	Last Week (MWh)	% Chg vs. Prior Week	Last Year (MWh)	% Chg vs. Prior Year
Hub	16,007	15,666	2.2%	16,876	-5.1%
ME	173,245	178,421	-2.9%	177,166	-2.2%
NH	186,125	191,501	-2.8%	188,832	-1.4%
VT	80,535	80,538	0.0%	77,554	3.8%
CT	432,248	449,638	-3.9%	432,813	-0.1%
RI	129,448	128,816	0.5%	134,317	-3.6%
SEMA	228,264	232,805	-2.0%	220,221	3.7%
WCMA	267,088	269,348	-0.8%	259,149	3.1%
NEMA	403,891	417,091	-3.2%	396,834	1.8%
NB Ext	680	164	314.6%	2,181	-68.8%
NY-N AC Ext	56,786	43,151	31.6%	53,242	6.7%
HQ Ext	113,830	107,700	5.7%	0	N/A
HG Ext	0	0	N/A	60	-100.0%
CSC Ext	13,210	4,776	176.6%	27,361	-51.7%
NNC Ext	0	0	N/A	5,653	-100.0%
NECEC Ext	0	0	N/A	N/A	N/A

Participants can bid fixed and price sensitive demand as well as submit virtual demand bids and virtual supply offers into the Day-Ahead Energy Market. The first graph below shows hourly cleared values for these four categories of bids and offers. The second graph shows average hourly values for the week.

**Hourly Cleared Demand and Virtual Volumes  
Day-Ahead Market, April 13-19, 2026**



**Avg Hourly Bid, Cleared Demand, and Virtual Demand and Supply  
Day-Ahead Market, April 13-19, 2026**



Daily Demand Bid and Virtual Volumes by Zone (MWh)

April 13-19, 2026

The following table summarizes Day-Ahead demand bid volumes submitted and cleared at the Hub and in the eight Load Zones (including nodal locations within each Load Zone) along with virtual demand (Decrement or 'Dec') bids and supply (Increment or 'Inc') offers on the same basis.

Location	Day	Fixed Demand Bids	Price Sens. Bids	Dec Bids	Inc Offers	Cleared Fixed Demand	Cleared Price Sens. Demand	Cleared Decs	Cleared Incs	Total DA Demand
Hub	13APR26	0	0	4,583	3,024	0	0	2,140	2,370	2,140
Hub	14APR26	0	0	5,051	8,466	0	0	3,038	4,745	3,038
Hub	15APR26	0	0	2,104	10,015	0	0	788	4,371	788
Hub	16APR26	0	0	4,736	6,285	0	0	2,008	4,895	2,008
Hub	17APR26	0	0	2,019	5,707	0	0	1,124	3,874	1,124
Hub	18APR26	0	0	4,017	10,484	0	0	3,573	5,935	3,573
Hub	19APR26	0	0	6,409	2,199	0	0	3,337	1,294	3,337
ME	13APR26	18,875	6,802	1,142	13,618	18,875	6,802	795	10,139	26,472
ME	14APR26	17,420	5,863	807	10,866	17,420	5,863	536	8,319	23,819
ME	15APR26	18,833	6,611	2,254	8,550	18,833	6,611	1,102	5,361	26,546
ME	16APR26	18,811	6,736	2,674	5,987	18,811	6,736	1,653	4,465	27,200
ME	17APR26	16,805	6,241	1,058	8,407	16,805	6,241	683	4,187	23,728
ME	18APR26	16,501	5,968	1,762	13,239	16,501	5,968	799	10,041	23,268
ME	19APR26	18,736	6,683	2,327	11,918	18,736	6,683	1,384	6,949	26,802
NH	13APR26	22,502	4,558	799	1,387	22,502	4,558	355	1,352	27,414
NH	14APR26	22,113	4,739	575	1,590	22,113	4,739	380	1,565	27,231
NH	15APR26	22,232	4,832	566	1,838	22,232	4,832	310	1,741	27,374
NH	16APR26	22,029	4,795	901	1,622	22,029	4,795	369	1,213	27,192
NH	17APR26	21,808	4,594	694	2,518	21,808	4,594	426	1,612	26,828
NH	18APR26	20,238	3,887	1,033	1,989	20,238	3,887	507	1,846	24,632
NH	19APR26	22,214	3,770	1,123	1,318	22,214	3,770	627	1,146	26,610
VT	13APR26	1,108	11,264	1,579	2,128	1,108	11,264	802	1,808	13,174
VT	14APR26	921	10,328	1,533	1,593	921	10,328	948	1,540	12,196
VT	15APR26	930	10,904	1,796	1,373	930	10,904	1,195	1,191	13,029
VT	16APR26	929	10,637	1,642	1,754	929	10,637	923	1,348	12,489
VT	17APR26	1,161	9,722	1,223	2,531	1,161	9,722	798	1,542	11,682
VT	18APR26	905	7,464	1,226	2,417	905	7,464	567	2,054	8,936
VT	19APR26	1,429	10,829	1,521	1,817	1,429	10,829	1,037	1,377	13,295
CT	13APR26	43,378	19,114	2,789	1,222	43,378	19,114	1,691	889	64,182
CT	14APR26	42,813	18,280	2,374	1,618	42,813	18,280	1,821	1,335	62,914
CT	15APR26	44,133	19,618	3,108	1,495	44,133	19,618	1,855	1,322	65,606
CT	16APR26	44,844	19,926	3,070	1,331	44,844	19,926	1,878	954	66,648
CT	17APR26	42,496	18,948	2,106	1,547	42,496	18,948	1,621	885	63,065
CT	18APR26	38,299	16,644	2,331	2,236	38,299	16,644	1,976	1,791	56,919
CT	19APR26	40,334	18,384	3,627	1,787	40,334	18,384	2,235	825	60,952
RI	13APR26	14,238	3,633	1,141	1,608	14,238	3,633	324	1,013	18,195
RI	14APR26	14,173	3,432	1,100	1,681	14,173	3,432	402	1,669	18,007

## Weekly Market Summary



Location	Day	Fixed Demand Bids	Price Sens. Bids	Dec Bids	Inc Offers	Cleared Fixed Demand	Cleared Price Sens. Demand	Cleared Decs	Cleared Incs	Total DA Demand
RI	15APR26	14,548	3,554	1,224	1,607	14,548	3,554	319	1,455	18,421
RI	16APR26	14,408	3,599	4,518	2,067	14,408	3,599	2,578	1,322	20,584
RI	17APR26	14,225	3,466	2,415	2,162	14,225	3,466	1,837	996	19,528
RI	18APR26	13,636	3,132	1,941	2,848	13,636	3,132	1,396	1,807	18,163
RI	19APR26	13,663	3,307	1,197	1,320	13,663	3,307	719	706	17,689
SEMA	13APR26	24,624	8,283	1,388	1,449	24,624	8,283	607	784	33,514
SEMA	14APR26	24,042	7,847	1,390	1,723	24,042	7,847	785	1,705	32,673
SEMA	15APR26	24,125	8,089	1,761	1,964	24,125	8,089	713	1,721	32,927
SEMA	16APR26	24,194	7,856	1,642	2,751	24,194	7,856	846	2,181	32,896
SEMA	17APR26	23,351	7,833	1,071	2,450	23,351	7,833	663	1,248	31,847
SEMA	18APR26	22,913	7,652	2,190	1,837	22,913	7,652	1,677	1,755	32,241
SEMA	19APR26	24,021	8,098	1,828	1,436	24,021	8,098	946	1,186	33,064
WCMA	13APR26	29,200	8,700	1,653	829	29,200	8,700	681	632	38,582
WCMA	14APR26	29,125	8,834	1,387	1,356	29,125	8,834	733	1,337	38,691
WCMA	15APR26	29,711	9,049	1,588	1,402	29,711	9,049	763	1,353	39,523
WCMA	16APR26	30,566	9,460	1,733	1,314	30,566	9,460	1,042	922	41,067
WCMA	17APR26	28,753	8,784	1,614	1,827	28,753	8,784	1,096	1,130	38,633
WCMA	18APR26	26,427	7,118	2,233	1,975	26,427	7,118	1,913	1,690	35,458
WCMA	19APR26	28,880	7,938	2,126	846	28,880	7,938	1,540	588	38,358
NEMA	13APR26	45,352	13,586	645	1,425	45,352	13,586	293	846	59,230
NEMA	14APR26	45,548	13,513	604	1,701	45,548	13,513	335	1,678	59,396
NEMA	15APR26	45,080	13,757	1,456	1,911	45,080	13,757	364	1,106	59,201
NEMA	16APR26	44,457	13,310	1,493	2,654	44,457	13,285	413	1,274	58,155
NEMA	17APR26	43,411	12,982	1,377	3,501	43,411	12,982	753	1,322	57,147
NEMA	18APR26	41,693	11,840	2,155	1,884	41,693	11,840	1,752	1,580	55,284
NEMA	19APR26	43,109	12,369	1,900	912	43,109	12,369	887	349	56,364

### 3.2 Real-Time Demand

The following table displays the Real-Time Load Obligation at each Load Zone and external nodes for this week, last week, the same week a year ago, and the percentage change for each.

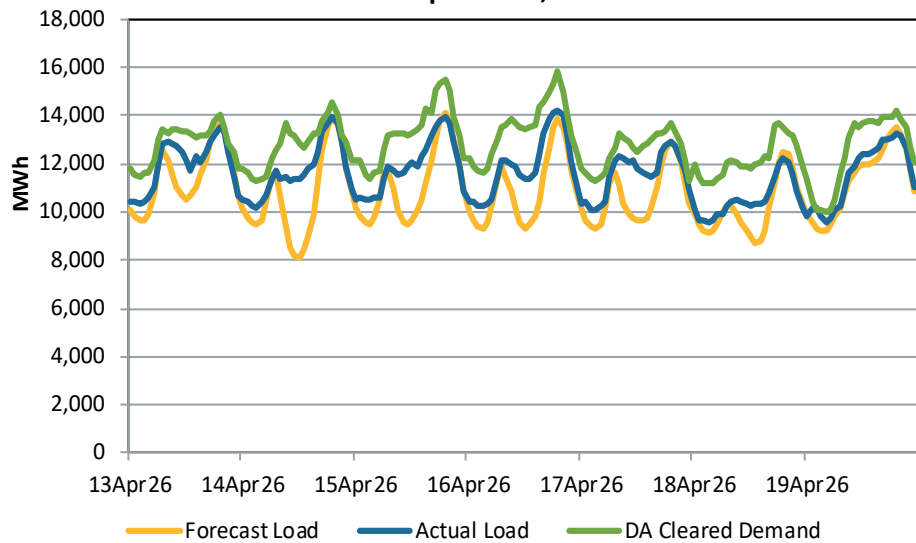
Location	This Week (MWh)	Last Week (MWh)	% Chg vs. Prior Week	Last Year (MWh)	% Chg vs. Prior Year
ME	180,795	184,009	-1.7%	175,695	2.9%
NH	187,062	196,643	-4.9%	185,406	0.9%
VT	76,483	79,092	-3.3%	71,349	7.2%
CT	448,026	427,564	4.8%	405,444	10.5%
RI	125,427	116,605	7.6%	118,090	6.2%
SEMA	223,094	228,183	-2.2%	212,664	4.9%
WCMA	264,225	265,971	-0.7%	252,979	4.4%
NEMA	392,938	404,187	-2.8%	383,835	2.4%
NB Ext	3,707	1,782	108.0%	12,726	-70.9%
NY-N AC Ext	157,183	145,345	8.1%	142,257	10.5%
HQ Ext	112,935	108,499	4.1%	0	N/A
HG Ext	0	0	N/A	0	N/A
CSC Ext	21,194	6,711	215.8%	26,932	-21.3%
NNC Ext	0	0	N/A	9,138	-100.0%
NECEC Ext	0	0	N/A	N/A	N/A

Real-Time Peak Hour System Load and Associated Average Hourly LMPs

Day	Hour	System Load (MW)	Hub	Maine Load Zone	NH Load Zone	VT Load Zone	CT Load Zone	RI Load Zone	SEMA Load Zone	WCMA Load Zone	NEMA Load Zone
13APR26	20	13,772	\$71.49	\$70.81	\$71.70	\$69.65	\$69.34	\$71.39	\$72.30	\$71.47	\$72.74
14APR26	20	14,184	\$89.71	\$90.18	\$90.76	\$89.06	\$87.57	\$89.60	\$90.52	\$89.86	\$91.28
15APR26	20	14,224	\$81.55	\$81.41	\$82.15	\$81.63	\$80.81	\$81.49	\$81.88	\$81.72	\$82.37
16APR26	20	14,468	\$79.11	\$77.53	\$78.92	\$78.45	\$79.01	\$79.39	\$79.35	\$79.32	\$79.46
17APR26	20	13,138	\$131.22	\$130.13	\$131.79	\$130.45	\$128.37	\$131.43	\$132.28	\$131.36	\$132.76
18APR26	20	12,516	\$42.73	\$40.06	\$41.78	\$41.46	\$41.77	\$42.90	\$43.32	\$42.60	\$42.91
19APR26	20	13,545	\$39.99	\$37.08	\$39.25	\$39.50	\$39.38	\$40.06	\$40.19	\$39.96	\$40.07

The graph below compares the hourly quantities of cleared Day-Ahead demand with the forecast and actual load. Cleared demand is the total of cleared fixed demand bids, cleared price sensitive demand bids, and cleared Decrement bids.

Cleared Demand, Forecast Load, and Actual Load  
April 13-19, 2026



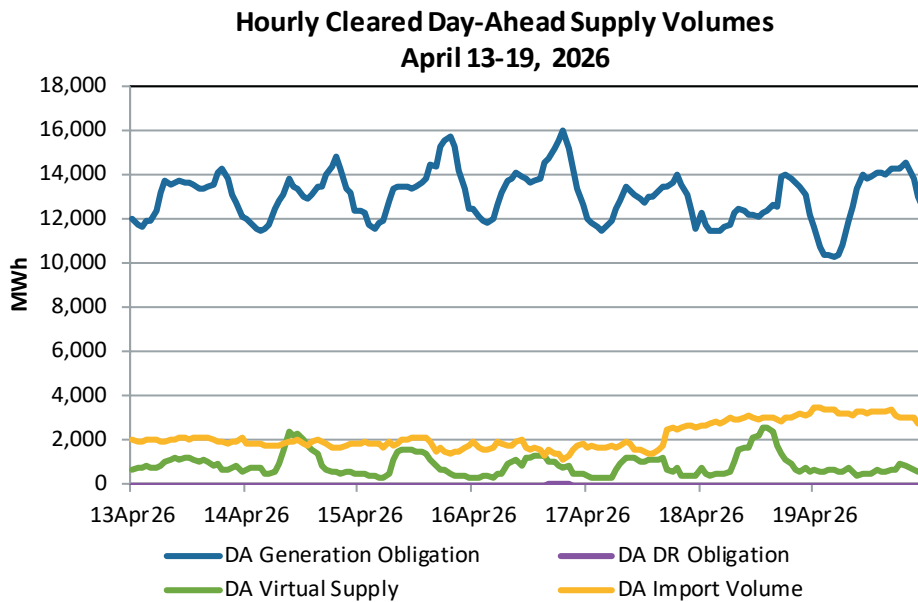
The table below compares the total quantities (MWh) of Day-Ahead Load Obligation with the Real-Time Load Obligation for each Load Zone (including nodal locations within each Load Zone) for the week. Day-Ahead Load Obligation is composed of Day-Ahead cleared demand bids and cleared Decrement bids. Real-Time Load Obligation is comprised of metered load and internal bilateral contracts for load.

Zone	DA Load Obligation (MWh)	RT Load Obligation (MWh)	DA Delta (MWh)	DA % of RT
ME	177,834	183,673	-5,839	96.8%
NH	187,282	188,424	-1,142	99.4%
VT	84,801	76,483	8,317	110.9%
CT	440,322	448,682	-8,360	98.1%
RI	130,587	125,427	5,160	104.1%
SEMA	229,164	228,102	1,062	100.5%
WCMA	293,464	304,327	-10,863	96.4%
NEMA	404,777	393,080	11,697	103.0%

Energy Market Supply [?](#)

**4.1 Day-Ahead Supply**

The following graph displays hourly Day-Ahead Generation Obligation, along with cleared Day-Ahead Increment offers (virtual supply), Day-Ahead Demand Reduction (DR) Obligation, and Day-Ahead Import volume.



The following table displays the average hourly Day-Ahead Generation and Day-Ahead Demand Reduction Obligation, along with cleared Day-Ahead Virtual Supply and Day-Ahead Import Volume, for this week, last week, the same week a year ago, and the percentage change for each.

Type	This Week (MWh)	Last Week (MWh)	% Chg vs. Prior Week	Last Year (MWh)	% Chg vs. Prior Year
DA Generation Obligation	13,002	13,173	-1.3%	12,228	6.3%
DA Demand Reduction Obligation	0	0	N/A	1	-100.0%
DA Cleared Increments	874	1,443	-39.4%	1,434	-39.0%
DA Imports	2,192	2,000	9.6%	1,697	29.1%

The following table provides the total Day-Ahead Imports by Interface for This Week, Last Week, the same week a year ago and the percentage change for each.

Location	This Week (MWh)	Last Week (MWh)	% Chg vs. Prior Week	Last Year (MWh)	% Chg vs. Prior Year
NB Ext	19,526	31,291	-37.6%	41,243	-52.7%
NY-N AC Ext	263,531	258,123	2.1%	216,847	21.5%
HQ Ext	23,639	13,246	78.5%	21,318	10.9%
HG Ext	0	0	N/A	1,284	-100.0%
CSC Ext	0	0	N/A	0	N/A
NNC Ext	0	0	N/A	3,348	-100.0%
NECEC Ext	61,545	33,370	84.4%	N/A	N/A

**4.2 Real-Time Supply**

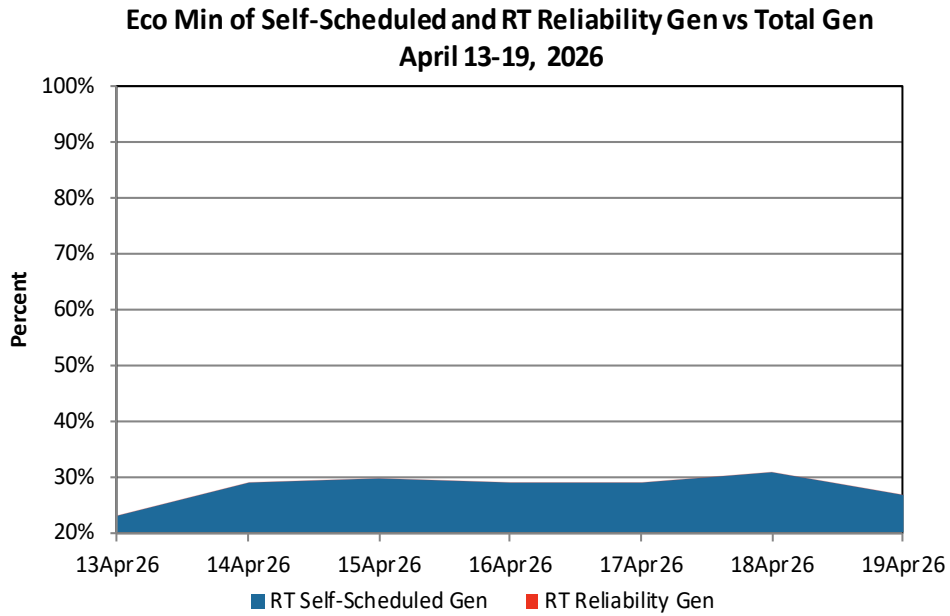
The following table provides daily and weekly totals, in megawatt-hours (MWh), of the amount of electricity produced by classified fuel type during the week. The data provided are for the full system, including “settlement only” resources that do not offer their output into the wholesale markets. The Price Responsive Demand (PRD) category below refers to Demand Reduction from Demand Response Resources (DRR). Annual files of Daily Generation by Fuel Type and further detail of the fuels composing the categories below may be found on the ISO’s web site [here](#).

Category	Metered Generation (Megawatt hours)							Total
	13Apr26	14Apr26	15Apr26	16Apr26	17Apr26	18Apr26	19Apr26	
Coal	0	0	0	0	0	0	0	0
Hydro	30,859	32,000	32,381	32,457	29,809	28,640	30,324	216,470
Landfill Gas	987	998	977	975	967	977	978	6,859
Methane	53	51	46	42	34	39	37	302
Natural Gas	156,386	161,579	181,423	192,503	168,375	123,023	142,118	1,125,407
Nuclear	29,835	29,851	29,816	29,781	29,725	29,716	29,733	208,457
Oil	1	366	57	229	82	0	0	735
Other	2,205	3,831	3,427	3,261	3,072	1,353	683	17,832
PRD	0	4	3	5	0	0	0	12
Refuse	3,561	5,811	5,481	5,135	5,031	5,270	5,479	35,768
Solar	8,966	20,118	15,917	15,381	13,515	12,351	3,279	89,527
Wind	28,018	14,993	8,334	9,117	11,696	19,593	21,708	113,459
Wood	4,266	3,574	3,150	3,244	2,830	2,075	1,863	21,002
Total	265,137	273,176	281,012	292,130	265,136	223,037	236,202	1,835,830

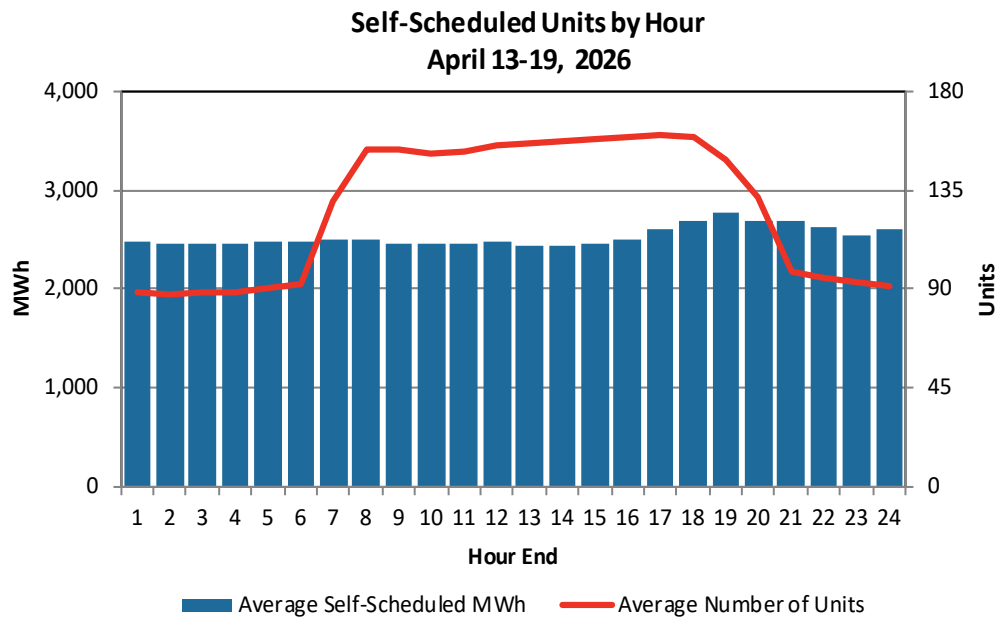
Online generators that are at their Economic Minimum output level are not eligible to set the clearing price. Real-Time Self-Scheduled Generation shown below reflects output by self-scheduled generation and by (non-dispatchable) Settlement Only Resources (SORs). Real-Time Reliability Generation represents the aggregate economic minimum output level of generation committed for reliability reasons. The following table shows the sum of generation self-scheduled (and SORs), and that of Real-Time reliability committed units, and, for reference, the total daily generation in megawatts by day for the current week.

Day	Self-Scheduled MWh	RT Reliability MWh	Total Generation MWh
13Apr26	60,221	0	265,138
14Apr26	79,239	0	273,175
15Apr26	83,223	0	281,011
16Apr26	84,642	36	292,130
17Apr26	76,248	0	265,134
18Apr26	68,568	0	223,038
19Apr26	64,700	0	236,202

The following graph shows the total economic minimum MWh of self-scheduled generation and generation committed for reliability as a percentage of total generation.



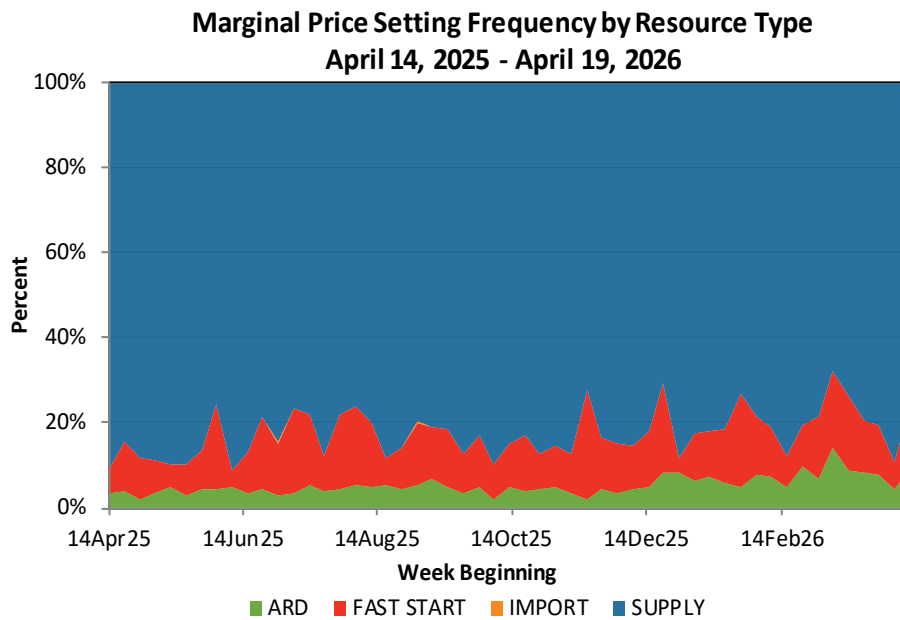
The following graph shows the average number of self-scheduled generating units and MWh for each hour of the last week.



The following table provides the total Real-Time Imports by Interface for this week, last week, the same week a year ago, and the percentage change for each.

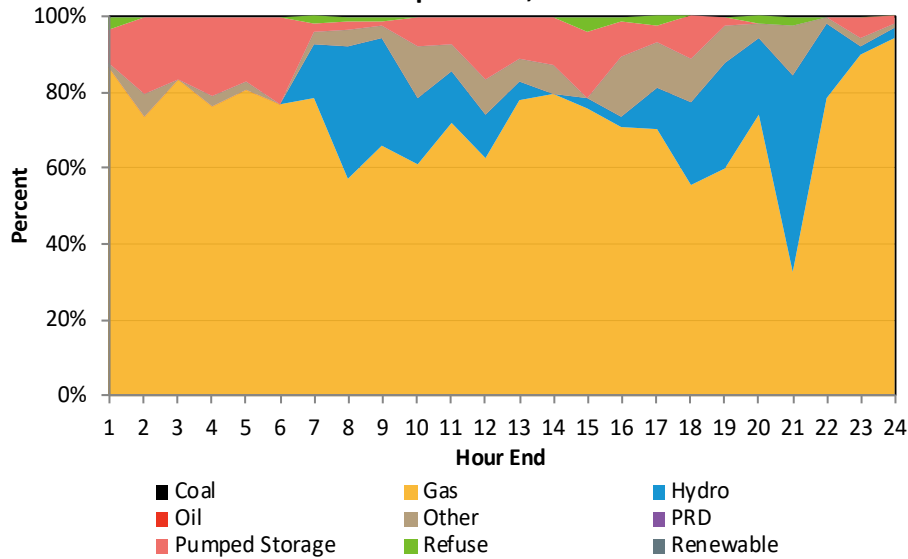
Location	This Week (MWh)	Last Week (MWh)	% Chg vs. Prior Week	Last Year (MWh)	% Chg vs. Prior Year
NB Ext	21,305	32,354	-34.2%	32,013	-33.4%
NY-N AC Ext	348,840	330,616	5.5%	292,661	19.2%
HQ Ext	18,886	10,303	83.3%	16,953	11.4%
HG Ext	0	0	N/A	5,508	-100.0%
CSC Ext	0	0	N/A	0	N/A
NNC Ext	0	0	N/A	3,067	-100.0%
NECEC Ext	59,469	33,370	78.2%	N/A	N/A

The following graph shows the percentage of time in which a particular resource-type was responsible for setting the price during each of the last 52 weeks.



The next graph shows the percentage of time in which a registered fuel type was responsible for setting the price during each hour of the last week. The Price Responsive Demand (PRD) category below refers to Demand Reduction Obligation from Demand Response Resources (DRR). The exhibit only summarizes the intervals in which one unit was marginal, which was 69% of all intervals during the week. For a load-weighted analysis of marginality, see Section 3.2 of Quarterly Markets Report, located [here](#).

**Marginal Price Setting Frequency by Fuel Type  
April 13-19, 2026**



## Net Commitment Period Compensation (NCPC)

### 5.1 Net Commitment Period Compensation

NCPC information does not appear in this report. Aggregate NCPC data continues to be provided in the supplemental Excel file on a one-week lag.

An NCPC Summary report is published to the [Market Performance Reports](#) webpage each Thursday or Friday.

The NCPC summary features daily-level summary charges and includes new detailed information concerning:

- Day-Ahead (DA) and Real-Time (RT) First Contingency payments to both internal and external payees
- DA and RT Second Contingency payments, including reliability region detail
- Voltage, Distribution, and Generator Performance Audit detail
- RT Detail for these concepts: Out of Merit, Canceled Starts, Hourly Shortfall, Posturing, Rapid Response Pricing Opportunity Cost, and Dispatch Lost Opportunity Cost

This report also includes a companion spreadsheet that contains daily, year-to-date totals for each of these concepts. The report and spreadsheet are also posted [here](#), select 'NCPC Summary' from the document type filter on the left side of the page.

Energy Market Payments 

**6.1 Energy Market Payments**

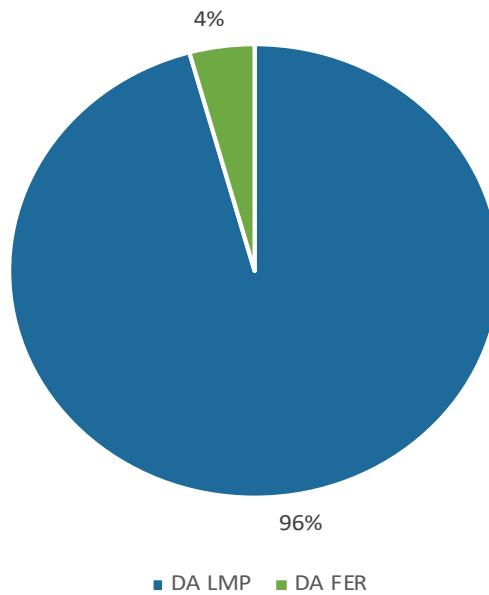
The table below displays the three components that make up the Energy Market payment for the prior week. These are payments made in relation to Day-Ahead LMPs, payments associated with the Day-Ahead Forecast Energy Requirement (FER), and payments related to deviations from Day-Ahead energy positions that occur in Real-Time.

**Energy Market Payment Summary  
April 13-19, 2026**

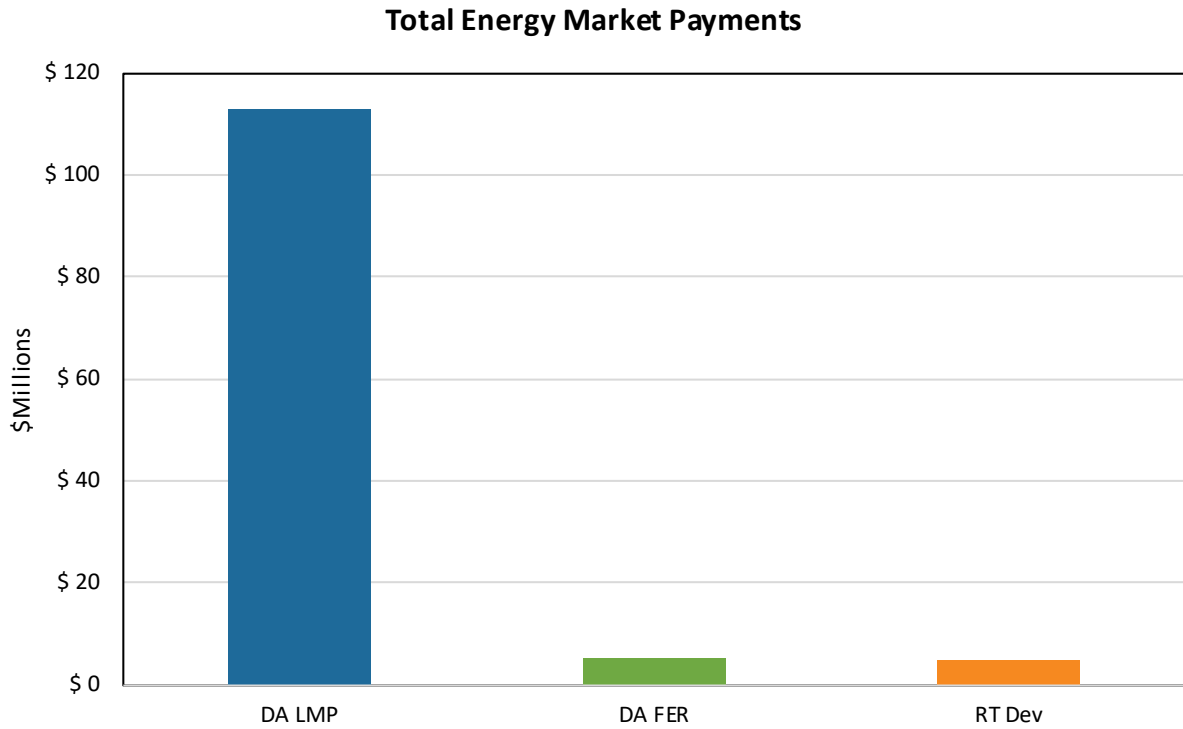
DA LMP Payments (A)	DA FER Payments (B)	RT Dev Payments (C)	Energy Market Payment (D=A+B+C)
\$112,864,025	\$5,047,920	\$4,819,163	\$122,731,108

The following chart shows the percentage contribution of the two components of the Day-Ahead Energy Market payment.

**Day-Ahead Energy Market Payments**



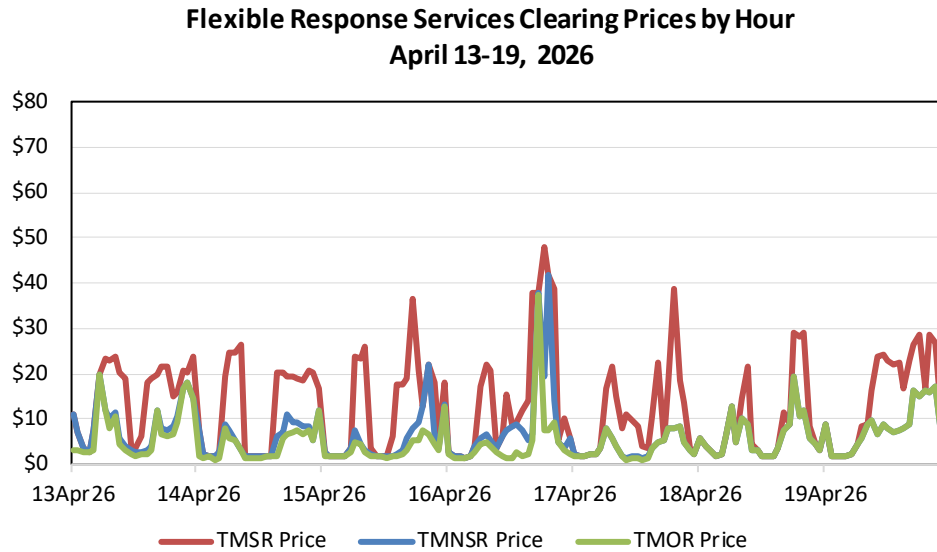
The chart below shows the magnitude of each component's contribution to the total Energy Market payment.



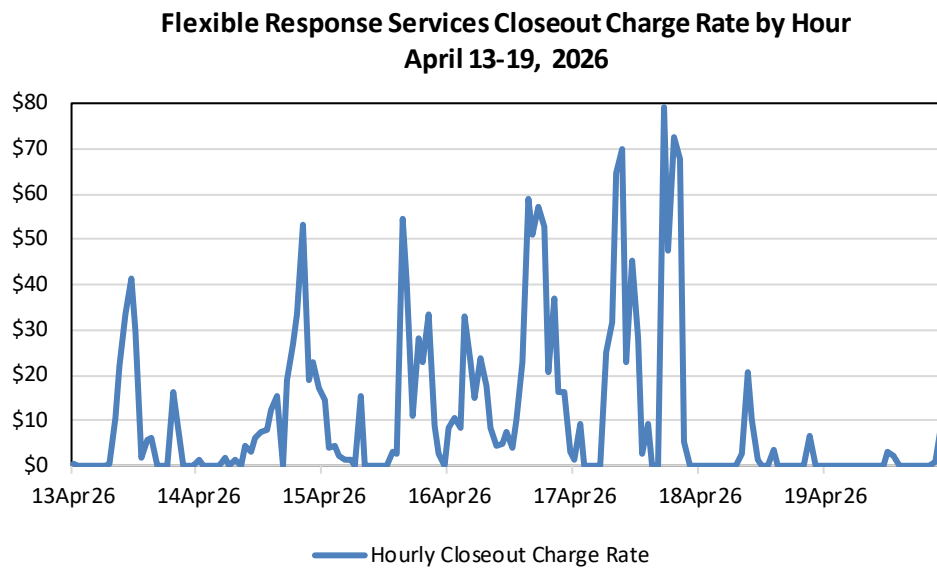
## Flexible Response Services (FRS)

### 7.1 FRS Pricing

The following graph shows the hourly FRS Clearing Prices for the past week.



The hourly closeout charge rate is the max of the (RT Hub LMP – Strike Price) and 0. The graph below shows the hourly closeout charge rate during the week.



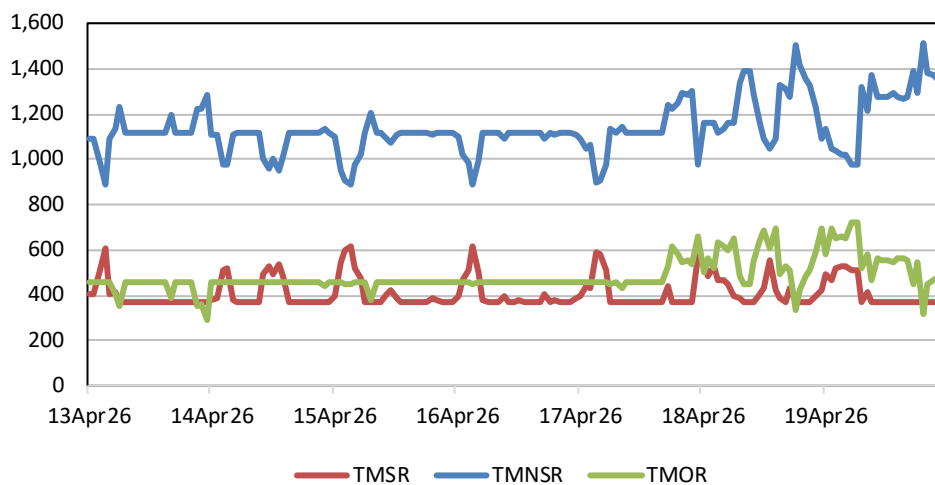
**Percentage of Hours with Closeout Charge Rates  
April 13-19, 2026**

Frequency Tabulation	\$0.00	\$0.01 - \$4.99	\$5.00 - \$9.99	\$10.00 - \$19.99	\$20.00 - \$49.99	\$50.00 - \$99.99	>= \$100.00
Hourly Closeout Charge Rate	42.3%	16.7%	10.7%	9.5%	14.3%	6.5%	0.0%

**7.2 FRS Quantities**

The following graph shows the Hourly Cleared MW of each FRS product.

**Cleared Flexible Response Services MW by Hour  
April 13-19, 2026**



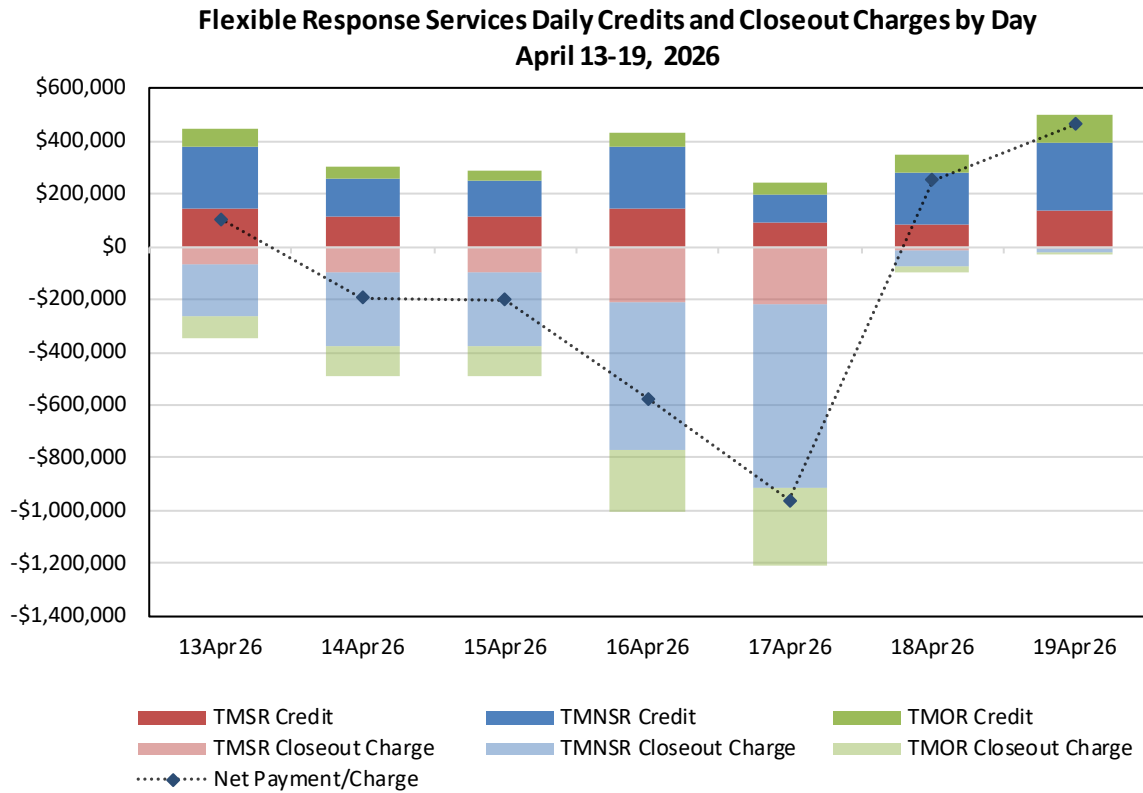
**7.3 FRS Payments**

FRS payments made to units during the prior week are shown in the following table. FRS procurements are made to satisfy the system level requirement for these services. The figures below are preliminary, and subject to revision during the settlement process.

**Flexible Response Services Payment Summary  
April 13-19, 2026**

Product Type	FRS Credits (A)	FRS Closeout Charges (B)	FRS Net Payments/Charges (C=A+B)
TMSR	\$820,489	-\$715,297	\$105,192
TMNSR	\$1,307,088	-\$2,086,081	-\$778,993
TMOR	\$427,146	-\$869,903	-\$442,758
<b>Total</b>	<b>\$2,554,723</b>	<b>-\$3,671,282</b>	<b>-\$1,116,559</b>

The following graph shows the daily Credit and Closeout charges by FRS product type:

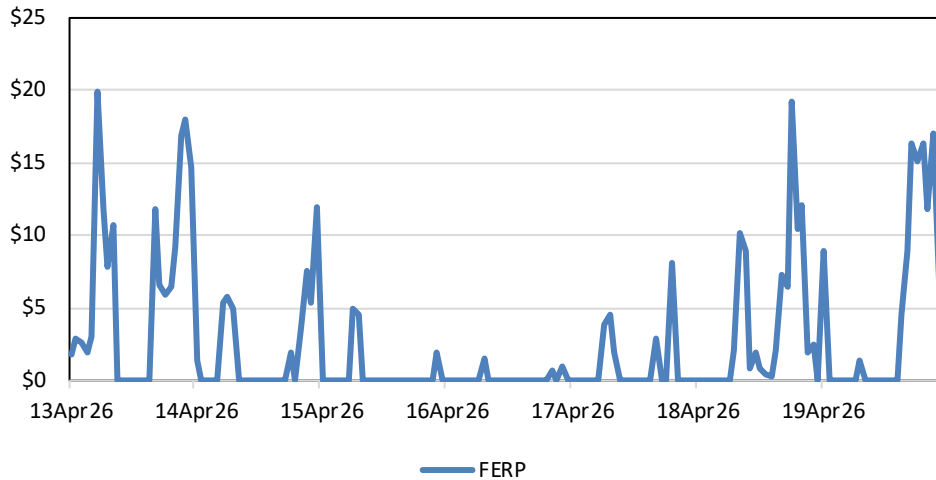


**Forecast Energy Requirement (FER) and Energy Imbalance Reserves (EIR)**

**8.1 FER and EIR Pricing**

Payments to units for both FER and EIR Obligations are made based on the Forecast Energy Requirement Price (FERP). The graph below shows the FERP by hour.

**Forecast Energy Requirement Price by Hour  
April 13-19, 2026**



The following table shows the Daily and Weekly Average FERP during the reporting week.

**Average Daily and Weekly Forecast Energy Requirement Price (\$/MWh)  
April 13-19, 2026**

13Apr26	14Apr26	15Apr26	16Apr26	17Apr26	18Apr26	19Apr26	Weekly Average
\$6.34	\$1.99	\$0.47	\$0.13	\$0.89	\$3.64	\$4.80	\$2.61

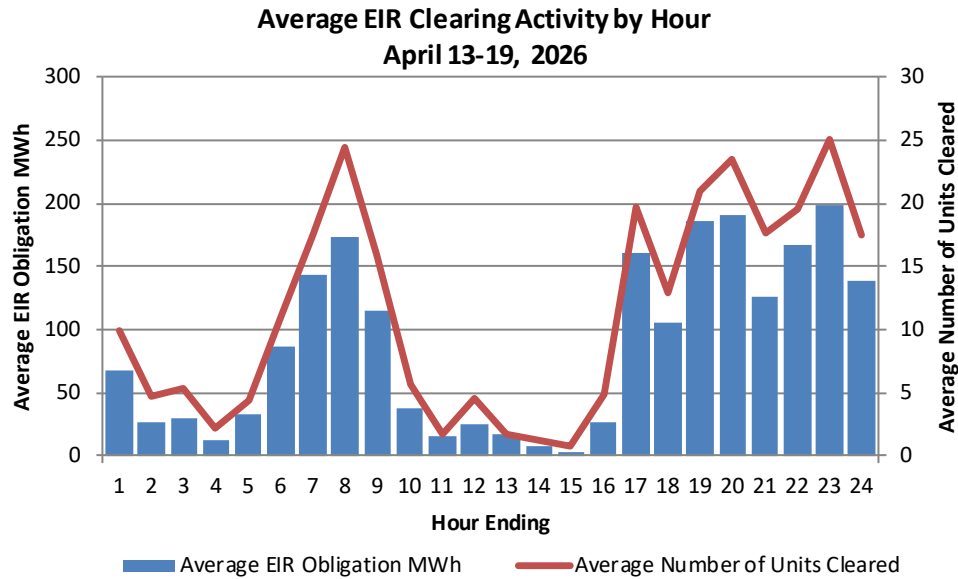
The following table shows the distribution of the hourly FERP during the reporting week.

**Hourly Forecast Energy Requirement Price Distribution  
April 13-19, 2026**

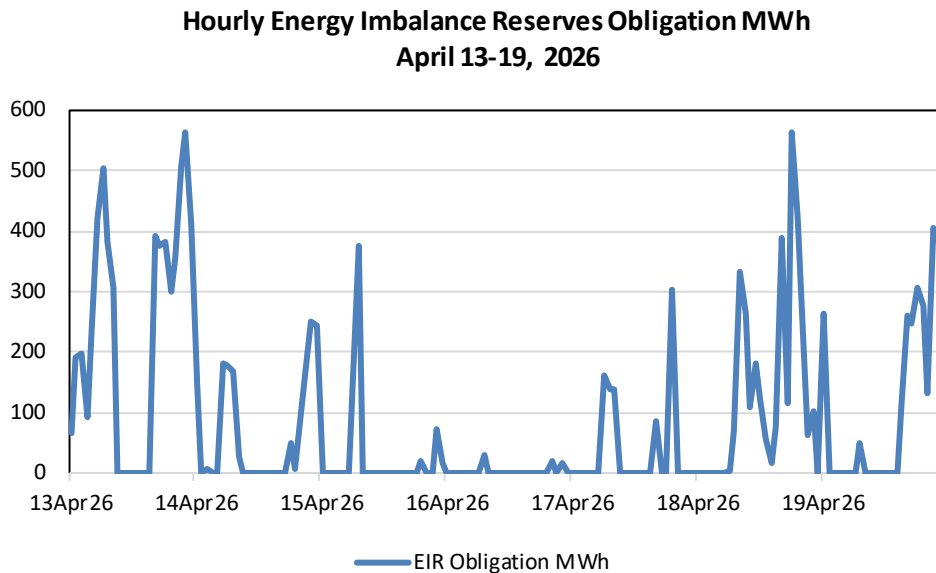
Frequency Tabulation	\$0.00	\$0.01 - \$4.99	\$5.00 - \$9.99	\$10.00 - \$19.99	\$20.00 - \$49.99	\$50.00 - \$99.99	>= \$100.00
FERP	61.9%	17.9%	10.1%	10.1%	0.0%	0.0%	0.0%

### 8.2 EIR Obligations

The following graph shows both the average hourly cleared EIR Obligation MW and the average hourly number of units cleared during the reporting week.



The following graph shows the hourly EIR Obligation MWh values for the week.



The table below shows the distribution of the hourly EIR Obligation MWh during the reporting week.

**Energy Imbalance Reserves Obligation MWh Distribution  
April 13-19, 2026**

Frequency Tabulation	0 MWh	0.01-49.99 MWh	50.0-99.99 MWh	100.0-249.99 MWh	250.0-499.99 MWh	500.0-999.99 MWh	>= 1,000 MWh
EIR Obligation MWh	58.3%	6.5%	6.0%	12.5%	14.3%	2.4%	0.0%

**8.3 FER and EIR Payments**

FER payments made to total cleared DA Generation MWh, DA Import MWh, DA DRR MWh, along with EIR Obligation MWh during the reporting week are shown in the following table. These figures are preliminary, and subject to revision during the settlement process.

**Daily Forecast Energy Requirement and Energy Imbalance Reserves Payment Summary  
April 13-19, 2026**

Day	DA FER Payments (A)	EIR Payments (B)	EIR Closeout Charges (C)	EIR Net Payments/Charges (D=B+C)	DA FER and EIR Net Payments/Charges (E=A+D)
13Apr26	\$1,739,983	\$62,135	-\$11,777	\$50,358	\$1,790,341
14Apr26	\$548,871	\$9,166	-\$21,157	-\$11,992	\$536,879
15Apr26	\$130,727	\$2,599	-\$6,434	-\$3,834	\$126,892
16Apr26	\$39,276	\$74	-\$1,506	-\$1,432	\$37,844
17Apr26	\$240,581	\$4,237	-\$39,468	-\$35,231	\$205,350
18Apr26	\$947,555	\$29,182	-\$8,257	\$20,925	\$968,480
19Apr26	\$1,400,928	\$31,861	-\$3,770	\$28,091	\$1,429,019
Total	\$5,047,920	\$139,254	-\$92,369	\$46,885	\$5,094,805

## Real-Time Reserve Market

### 9.1 Real-Time Reserve Payments

#### Real-Time Reserve Payment Summary by Reserve Zone April 13-19, 2026

DAY	CT	NEMABSTN	ROS	SWCT	Total
13APR26	\$33.75	\$17.77	\$1,194.95	\$81.94	\$1,328.41
14APR26	\$5,595.74	\$3,832.40	\$20,436.32	\$7,346.96	\$37,211.42
15APR26	\$1,321.14	\$559.95	\$5,730.69	\$1,729.11	\$9,340.89
16APR26	\$211.56	\$160.46	\$2,546.89	\$330.86	\$3,249.77
17APR26	\$1,027.45	\$638.81	\$13,211.73	\$2,309.19	\$17,187.18
18APR26	\$0.00	\$0.00	\$0.00	\$0.00	\$0.00
19APR26	\$0.00	\$0.00	\$0.00	\$0.00	\$0.00
Total	\$8,189.64	\$5,209.39	\$43,120.58	\$11,798.06	\$68,317.67

The following table shows Real-Time Reserve clearing prices. These figures are also preliminary and subject to revision during the settlement process.

#### Real-Time Reserve Clearing Price Frequency, Local Reserve Zones April 13-19, 2026

Product	Zero-Priced 5-Minute Intervals	Non-Zero 5-Minute Intervals	Percentage of Non-Zero 5-Minute Intervals During the Week						
			<=\$10	\$10.01-\$50	\$50.01-\$100	\$100.01-\$200	\$200.01-\$500	\$500.01-\$1000	> \$1,000
TMSR	96.2%	3.8%	61.8%	35.5%	2.6%	0.0%	0.0%	0.0%	0.0%
TMNSR	99.2%	0.8%	64.7%	23.5%	11.8%	0.0%	0.0%	0.0%	0.0%
TMOR	99.7%	0.3%	42.9%	28.6%	28.6%	0.0%	0.0%	0.0%	0.0%

#### Real-Time Reserve Clearing Price Frequency, Local Reserve Zones April 13-19, 2026

Local Reserve Zone	Product	Zero-Priced 5-Minute Intervals	Non-Zero 5-Minute Intervals
Connecticut	TMSR	96.2%	3.8%
	TMNSR	99.2%	0.8%
	TMOR	99.7%	0.3%
NEMA/Boston	TMSR	96.2%	3.8%
	TMNSR	99.2%	0.8%
	TMOR	99.7%	0.3%
Rest Of System	TMSR	96.2%	3.8%
	TMNSR	99.2%	0.8%
	TMOR	99.7%	0.3%
Southwest Connecticut	TMSR	96.2%	3.8%
	TMNSR	99.2%	0.8%
	TMOR	99.7%	0.3%

The table below displays the time intervals, reserve types, and bias adjustment values for any reserve bias adjustments during this week.

**Real-Time Reserve Bias  
April 13-19, 2026**

Local Day	Reserve Bias
April 13-19, 2026	None

## Capacity Scarcity Conditions (CSC)

### 10.1 Capacity Scarcity Conditions

A Capacity Scarcity Condition (CSC) occurs when there is a deficiency in one or more of the three reserve requirements and the reserve-constraint penalty factor (RCPF) is setting the Real-Time Reserve price. More information can be found [here](#) in section III.13.7.2.1.

The preliminary balancing ratio is a value representing the initially calculated relationship between the required capacity and the total Capacity Supply Obligation during a CSC. The balancing ratio is computed using the following formula:

$$(\text{Load} + \text{Reserve Requirement}) / \text{Total Capacity Supply Obligation}$$

The OP-4 Actions are the eleven actions, outlined by Operating Procedure 4, that ISO-NE uses during periods of capacity deficiency. More information and descriptions of each OP-4 Action can be found [here](#).

The tables below display the time intervals, OP-4 Actions, and preliminary balancing ratio for any Capacity Scarcity Conditions during this week.

#### System-wide Capacity Scarcity Condition Detail<sup>1</sup> April 13-19, 2026

Day	5-Minute Interval Beginning	Location	OP-4 Actions	Preliminary Balancing Ratio
There were no System-wide Capacity Scarcity Condition events during this period.				

#### Local Capacity Scarcity Condition Detail April 13-19, 2026

Day	5-Minute Interval Beginning	Location	OP-4 Actions	Preliminary Balancing Ratio
There were no Local Capacity Scarcity Condition events during this period.				

<sup>1</sup> The initial value may change at time of actual market settlement.

## Glossary and Links

### **11.1 Peak Load Statistics**

#### **FCM System Load**

FCM system load is the sum of active load assets that are non-dispatchable and that are included in the FCM settlement. Information is used to establish a load asset's contribution to the peak system load for purposes of the Forward Capacity Market (FCM). For more information on the FCM annual system peak day, hour, and load, see the ISO website [here](#).

#### **Revenue Quality System Load**

The revenue quality system load is the metered settlement value of the system 'net energy' for load concept. It is defined as the sum of generation, net external interchange, and the reduction provided by dispatched Demand Response Resources (DRR), less load from pumped storage units and energy storage devices.

#### **Telemetered System Load**

The telemetered system load value represents the calculated 'real-time' demand for electricity in the New England Balancing Authority Area that represents a telemetered aggregation of generation, net interchange, DRR reconstitution and excluding pumping load.

### **11.2 Locational Marginal Price (LMP)**

A LMP is a calculated price of wholesale electric energy at a pricing node, Load Zone, reliability region, or the Hub. LMPs are comprised of three components: energy, congestion, and marginal losses. The energy component is the same at all locations, while the congestion and marginal loss components can vary among locations. More information on LMPs can be found at the ISO web site [here](#).

[Analyze:](#) Weekly Average Day-Ahead LMP Statistics, Hub and Load Zones (53 weeks, Excel format.)  
*TAB NAME: 'Avg DA and RT LMP Hub and Zones'*

[Analyze:](#) Weekly Average Congestion and Loss Components, Hub and Load Zones (53 weeks, Excel format.)  
*TAB NAME: 'Average Congestion and Loss'*

### **11.3 Day-Ahead and Real-Time Energy Markets**

#### **Day-Ahead and Real-Time Demand**

Participants can bid fixed and price sensitive demand into the Day-Ahead Energy Market. They can also submit virtual demand bids called Decrement (Dec) bids as well as External Transaction bids. Day-Ahead Load Obligation (DALO) is the result of clearing the Day-Ahead Energy Market, and is aggregated by location. DALO is the total MWh of cleared demand bids, cleared Decs, and cleared External Transaction sales at all locations. Real-Time Load Obligation (RTLO) is the total MWh of a participant's metered load including External Transaction sales.

[Analyze:](#) Weekly Total Day-Ahead and Real-Time Load Obligation, Hub and Zones (53 weeks, Excel format)

TAB NAME: 'Total DA and RT Load Obligation'

**Day-Ahead and Real-Time Supply**

Participants can bid “must run” and Economic supply into the Day-Ahead Energy Market. They can also submit virtual supply offers called Increment (Inc) offers as well as External Transaction offers. Day-Ahead Generation Obligation (DAGO) is the result of clearing the Day-Ahead Energy Market, and is aggregated by Location. DAGO is the total MWh of cleared supply offers, cleared Inc offers, and cleared External Transaction purchases at all locations. Real-Time Generation Obligation (RTGO) is equal to the MWh of energy provided by Generators and External Transaction purchases at that Location. Real-Time Generation Obligation Deviation is the total MWh of a participant’s metered generation less their DAGO positions.

[Analyze:](#) Weekly Total Day-Ahead Generation Obligation, Hub and Zones (53 weeks, Excel format)

TAB NAME: 'DA Supply'

[Analyze:](#) Marginal Fuel Type by Week (53 weeks, Excel format).

TAB NAME: 'Percent Marginal Fuel Type'

[Analyze:](#) Marginal Resource Type by Week (53 weeks, Excel format).

TAB NAME: 'Percent Marginal Resource Type'

**System Load**

System Load is ‘net energy’ for load on the system and is defined as the sum of generation and net external interchange, less pumping load. This total also includes the grossed up demand response value, and excludes demand from energy storage devices. Real-Time Load Obligation is the sum of all revenue quality metered load within the control area plus Real-Time External Transaction sales.

For more information on the Day-Ahead and Real-Time Energy Markets and associated charges, see the ISO web site [here](#) for Day-Ahead and [here](#) for Real-Time.

**11.4 Net Commitment Period Compensation (NCPC)**

NCPC is the payment to a market participant for its Generator, Asset-Related Demand (ARD), Demand Response Resource (DRR), or External Transaction that did not recover its effective offer costs from the energy market during an operating day. The NCPC payment is intended to make a resource that follows the ISO’s operating instructions “no worse off” financially than the best alternative generation schedule. Typically, a resource receiving NCPC was operated out of merit to protect the overall resource adequacy and transmission security of specific locations or of the entire balancing authority area.

For more information on the Day-Ahead and Real-Time Energy Markets and associated charges, see the ISO web site [here](#) for Day-Ahead and [here](#) for Real-Time.

**11.5 Energy Market Payments**

The Energy Market payment is made up of three components: payments made in relation to Day-Ahead LMPs, payments associated with Day-Ahead Forecast Energy Requirement (FER), and payments related to deviations in Real-Time.

The Day-Ahead Energy Market is a financial market where market participants purchase and sell electric energy at financially binding Day-Ahead prices for the following day. This market is the financially binding schedule of commitments for the purchase and sale of energy the ISO develops each day according to the bid and offer data that market participants submit to the market. A supply offer or a demand bid will generally clear the Day-Ahead market if its associated price is less than or equal to the hourly Locational Marginal Price (LMP) at its location, as system conditions allow.

The Day-Ahead market allows buyers and sellers to hedge against price volatility in the Real-Time Energy Market by locking in energy prices before the operating day.

The FER is equal to the load forecast, and it is satisfied by a combination of the Day-Ahead Energy Imbalance Reserves (EIR) product and cleared Day-Ahead energy supplied by Generator Assets, Demand Response Resources, and net Imports. The Forecast Energy Requirement Price (FERP) is the clearing price for the FER (analogous to how the LMP is the clearing price for the energy balance constraint). A MWh of cleared Day-Ahead energy from a physical supply resource will be paid the LMP + FERP, because that MWh contributes to both the energy balance and FER constraints. A MWh of cleared EIR, in contrast, is paid only the FERP, because it contributes to the FER, but not to the energy balance constraint. EIR payments are part of the Day-Ahead Ancillary Services market, and are not included in the Day-Ahead Energy Market value.

Payments in the Real-Time Energy Market are based upon deviations in the participants' actual operation in Real-Time from their Day-Ahead energy positions. These deviations are multiplied by the Real-Time LMP at the associated location to arrive at the Real-Time Energy Market payment total.

For more information on the Energy Market Payments, see the ISO web site located [here](#).

[Analyze](#): Energy Market Payments, by Week (53 weeks, Excel format)

TAB NAME: 'Energy Market Payments'

### **11.6 Flexible Response Services (FRS) Market**

The Day-Ahead Ancillary Services (DAAS) Market is designed to procure and transparently price the ancillary service capabilities needed for a reliable, next-day operating plan with an evolving generation fleet.

One component of the DAAS Market clears Day-Ahead flexible response services to ensure that the system is prepared to recover from sudden source-loss contingencies and can respond quickly to fluctuations in net load during the operating day. These are referred to as Flexible Response Services (FRS), and are analogous to the Ten-Minute Spinning Reserves (TMSR), Ten-Minute Non-Spinning Reserves (TMNSR), and Thirty-Minute Operating Reserves (TMOR). These three products (TMSR, TMNSR, and TMOR) will also have a closeout charge based on the Hub Real-Time LMP. All three of the FRS requirements are set on a region-wide basis.

For more information on the DAAS Market, see the ISO web site located [here](#).

[Analyze](#): DAAS Market Results, by Week (53 weeks, Excel format)

TAB NAME: 'DAAS Market'

### **11.7 Forecast Energy Requirement (FER) and Energy Imbalance Reserves (EIR) Market**

For more information on the FER component, see [11.5 Energy Market Payments](#).

The EIR component of the DAAS Market clears a new Day-Ahead ancillary service to cover the “gap” when the Day-Ahead market’s physical energy supply awards are below the ISO’s forecast Real-Time load. These MWh of cleared EIR are paid only the FERP, because they contribute to the FER, but not to the energy balance constraint. EIR is also subject to a closeout charge based on the Hub Real-Time LMP, and the EIR requirement is set on a region-wide basis.

For more information on the DAAS Market, see the ISO web site located [here](#).

[Analyze](#): Energy Market Payments, by Week (53 weeks, Excel format)

*TAB NAME: ‘Energy Market Payments’*

[Analyze](#): DAAS Market Results, by Week (53 weeks, Excel format)

*TAB NAME: ‘DAAS Market’*

### **11.8 Real-Time Reserve Market**

The Real-Time LMP calculation process simultaneously sets Real-Time Reserve Market Clearing Prices (RMCP) for Ten-Minute Spinning Reserve (TMSR), Ten-Minute Non-Spinning Reserve (TMNSR), and Thirty-Minute Operating Reserve (TMOR).

For more information on the Real-Time Reserve Market, see the ISO web site located [here](#).

[Analyze](#): Real-Time Reserve Market Results, by Week (53 weeks, Excel format)

*TAB NAME: ‘Real-Time Reserve Market’*

Document Revision History		
Date	Version	Remarks
4/23/2026	Original	Initial posting.