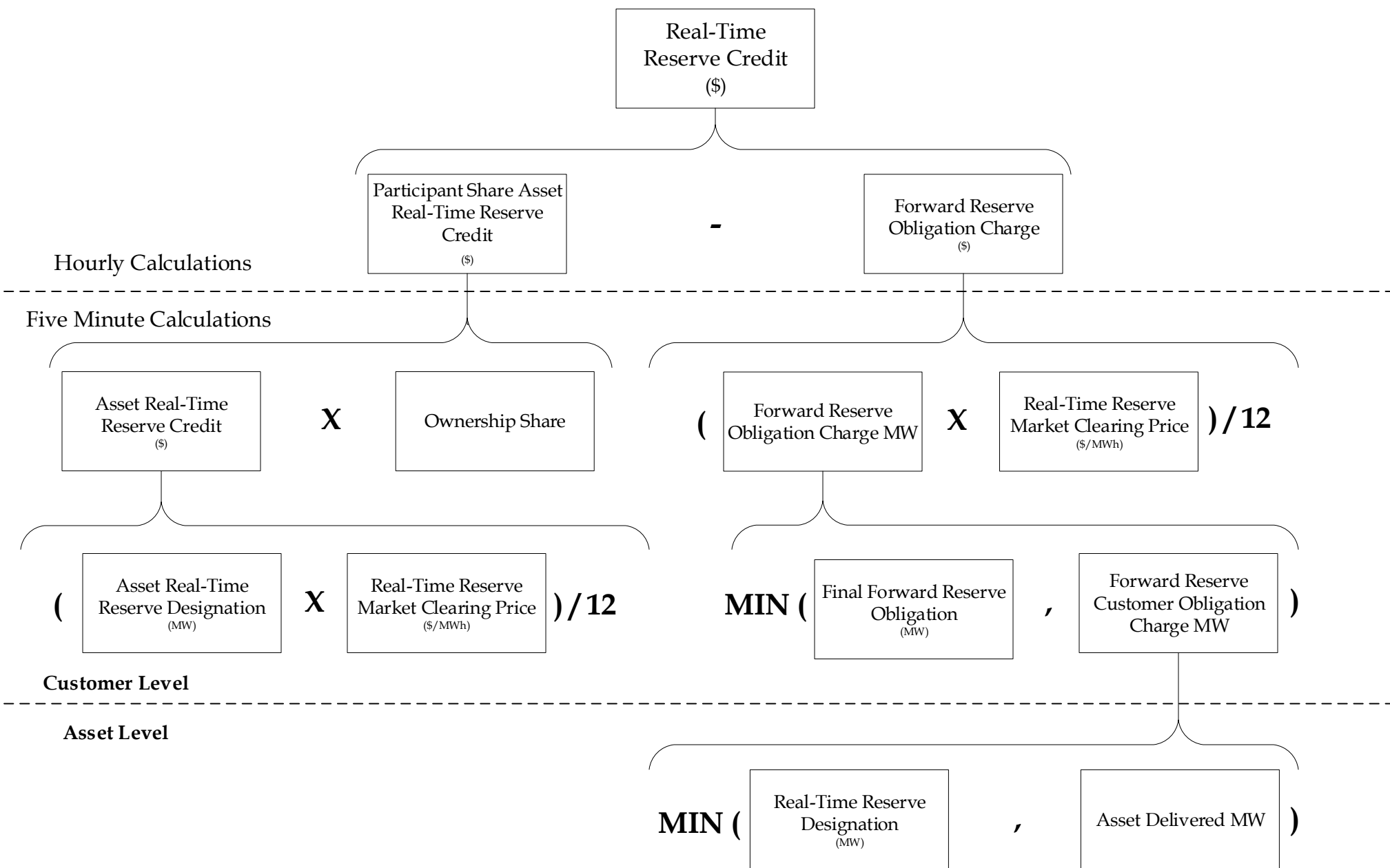
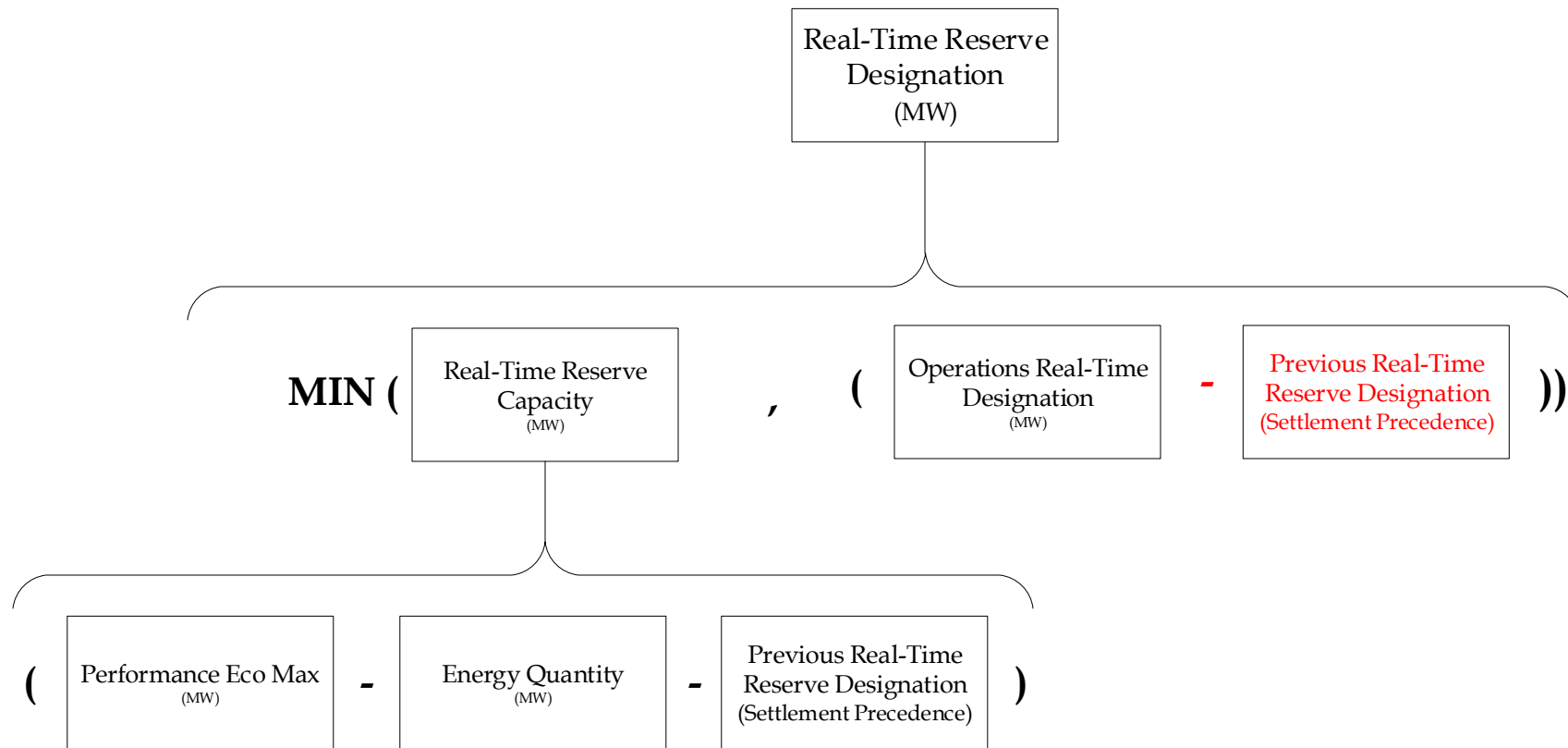


**Note:** The relevant ISO New England Markets, Services and Transmission Tariff and the relevant Market Manuals, Operating Procedures and Planning Procedures shall govern.

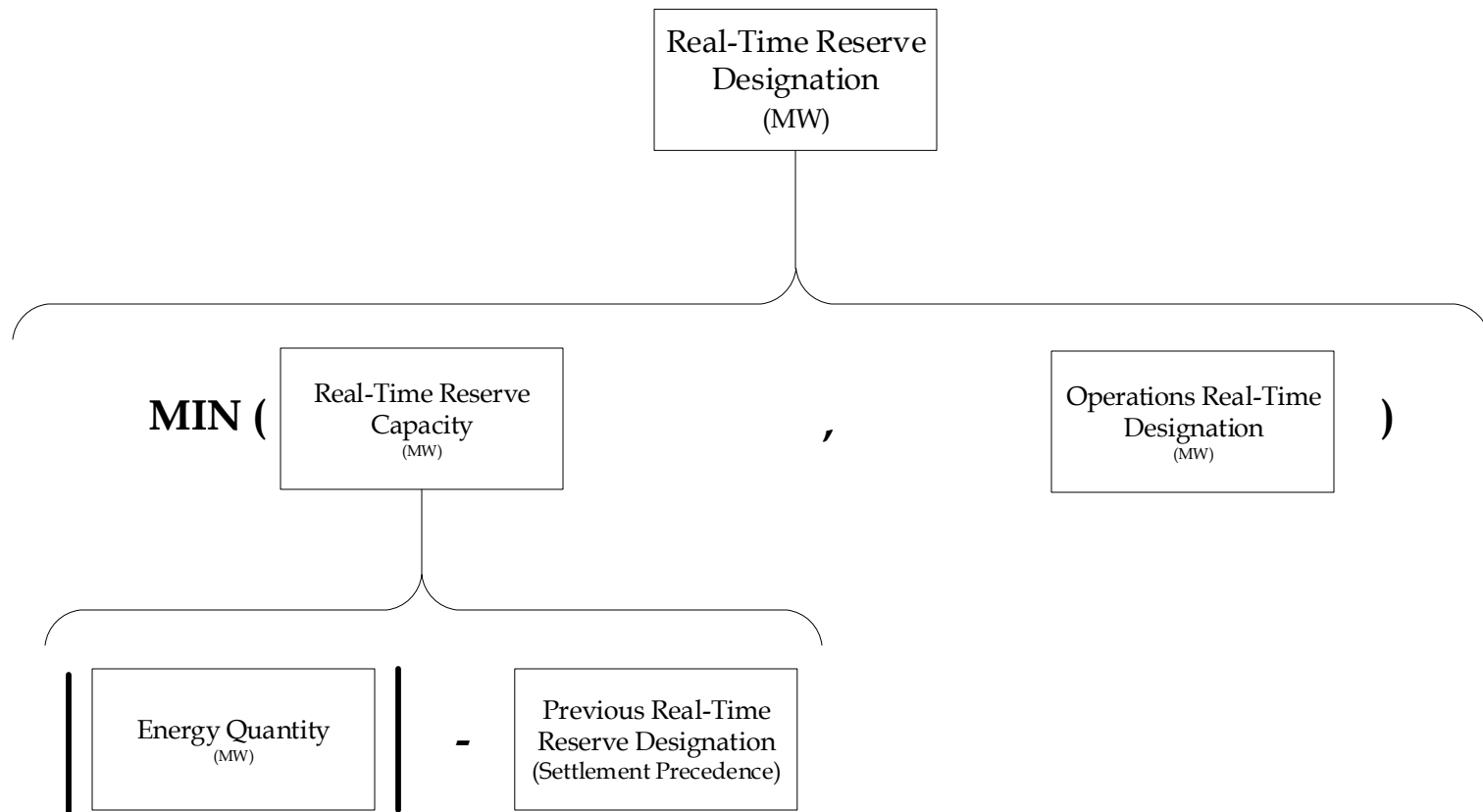
<b>Acronyms</b>	
<b>Acronym</b>	<b>Definition</b>
ARD	Asset Related Demand
CETICZ	Capacity Export Through Import Constrained Zone
DARD	Dispatchable Asset Related Demand
DRR	Demand Response Resource
FCA	Forward Capacity Auction
<b>Related Calculation Summaries</b>	
<b>Calculation Summary</b>	<b>Related Market</b>
reserve_market_calc_sum	Reserve Market
<b>Related Market Information Server (MIS) and World-wide Web (WW) Reports</b>	
<b>Report Code</b>	<b>Report Long Name</b>
SD_RSVASTDTL	Reserve Asset Detail Report
SD_RSVDTL5MIN	Reserve Detail Five Minute Report
SR_RSVCHARGE	Reserve Market Customer Charges Report
SR_RSVSTL	Reserve Market Settlement Report
SR_RSVZONESUM	Reserve Market Zonal Summary Report



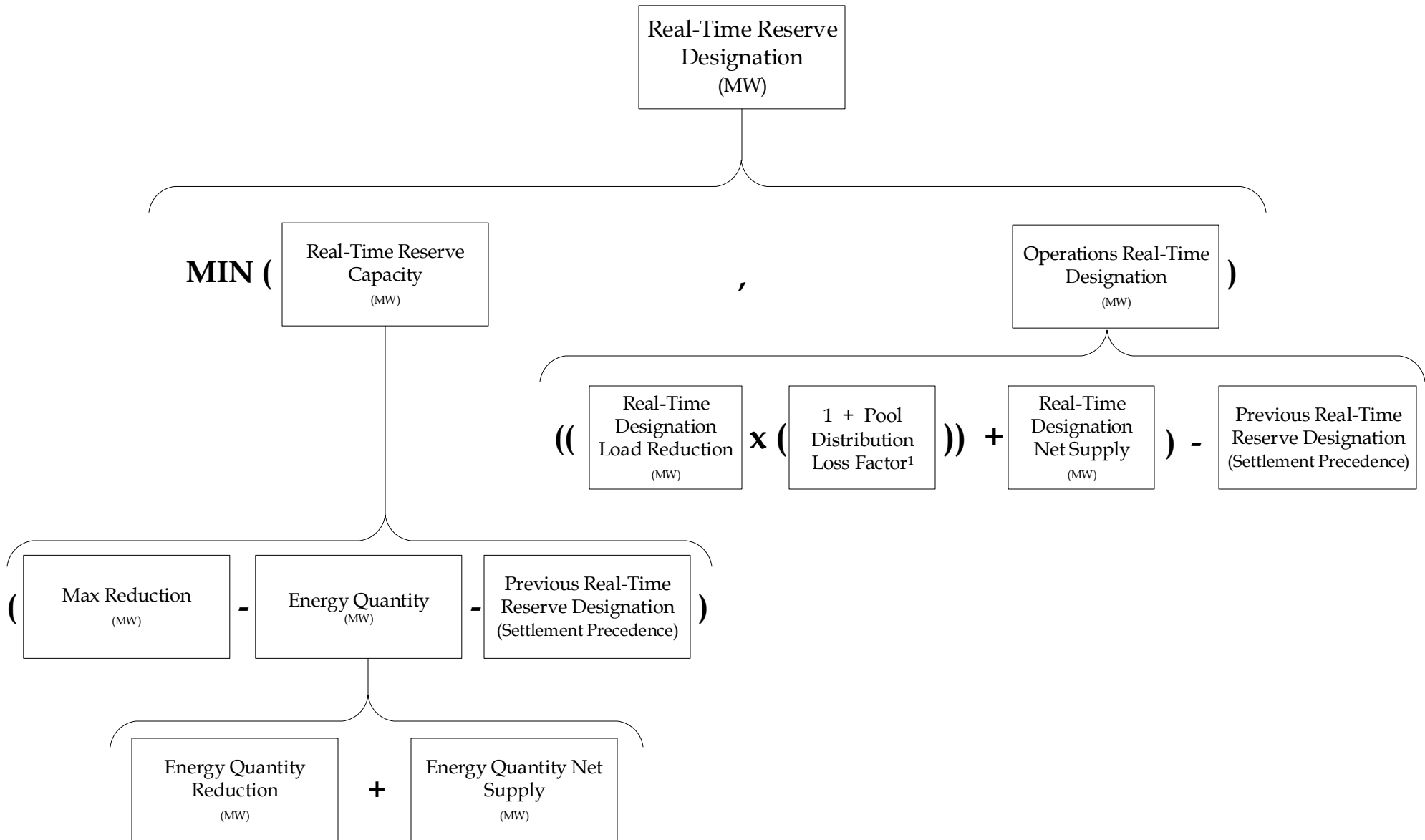
Five Minute Calculations



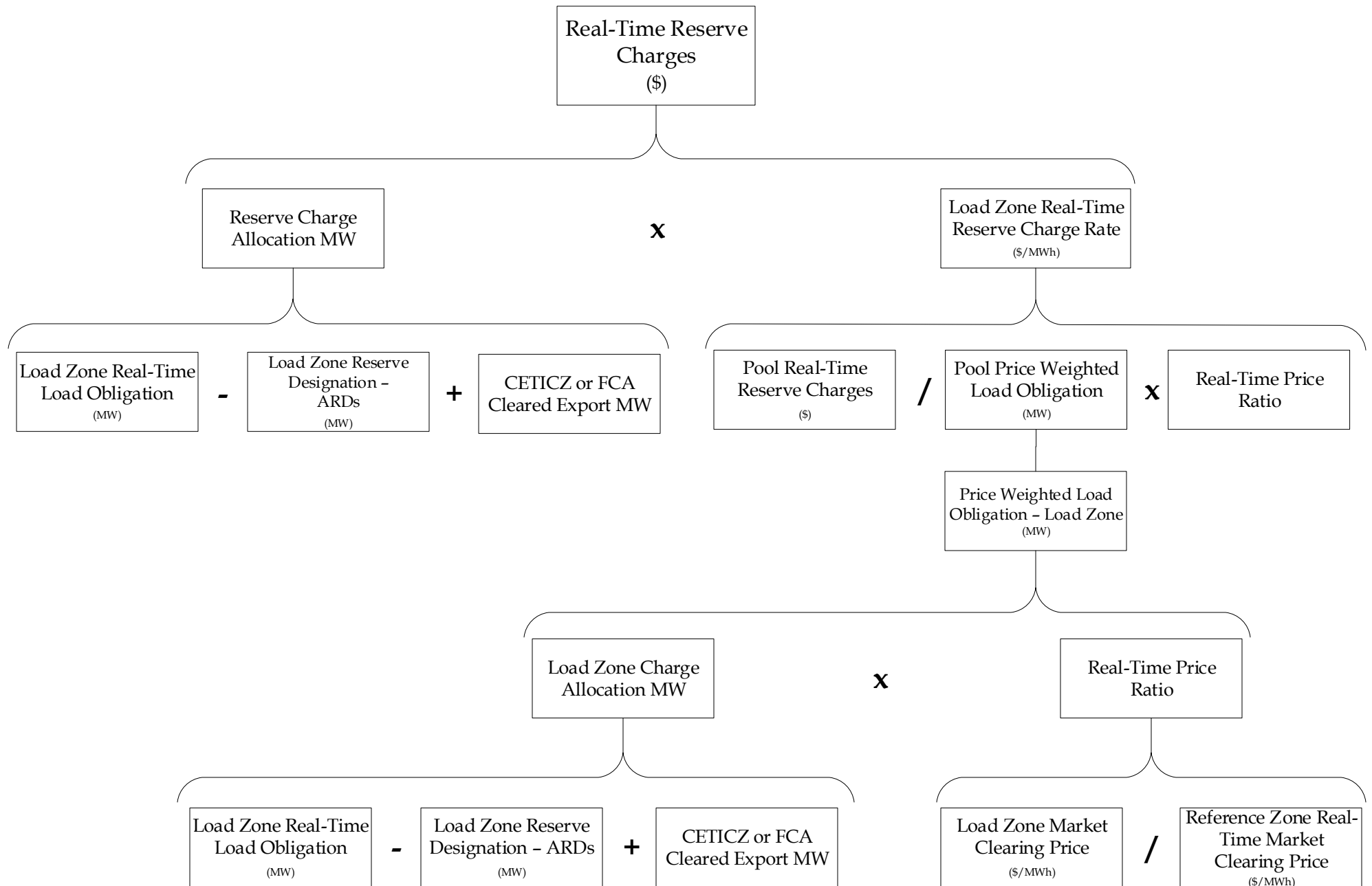
Five Minute Calculations



Five Minute Calculations



<sup>1</sup> Current value is 0.055



**Note:** The relevant ISO New England Markets, Services and Transmission Tariff and the relevant Market Manuals, Operating Procedures and Planning Procedures shall govern.

## *Revision History* ISO New England Calculation Summary

Date	Version #	Modifier	Comments
8/1/2012	1.0	ISO New England	New format.
2/22/2013	2.0	ISO New England	Updated Real-Time Reserve Credit Calculation Summary
3/1/2017	3.0	ISO New England	Updated for Sub Hourly Settlements
6/1/2018	4.0	ISO New England	Updated for PRD Settlement
4/1/2019	4.1	ISO New England	Clean up to correc Pool Distribution Loss Factor from 1.055 to 0.055. Modified the display for formula on page 5.
1/4/2023	4.2	ISO New England	Correct the Real Time Reserve Designation Calculation