



A NEW INDUSTRY IN THE PORT OF NEW BEDFORD

Developing Compatible Infrastructure and Economic
Development for the Offshore Wind and
Commercial Fishing Industries

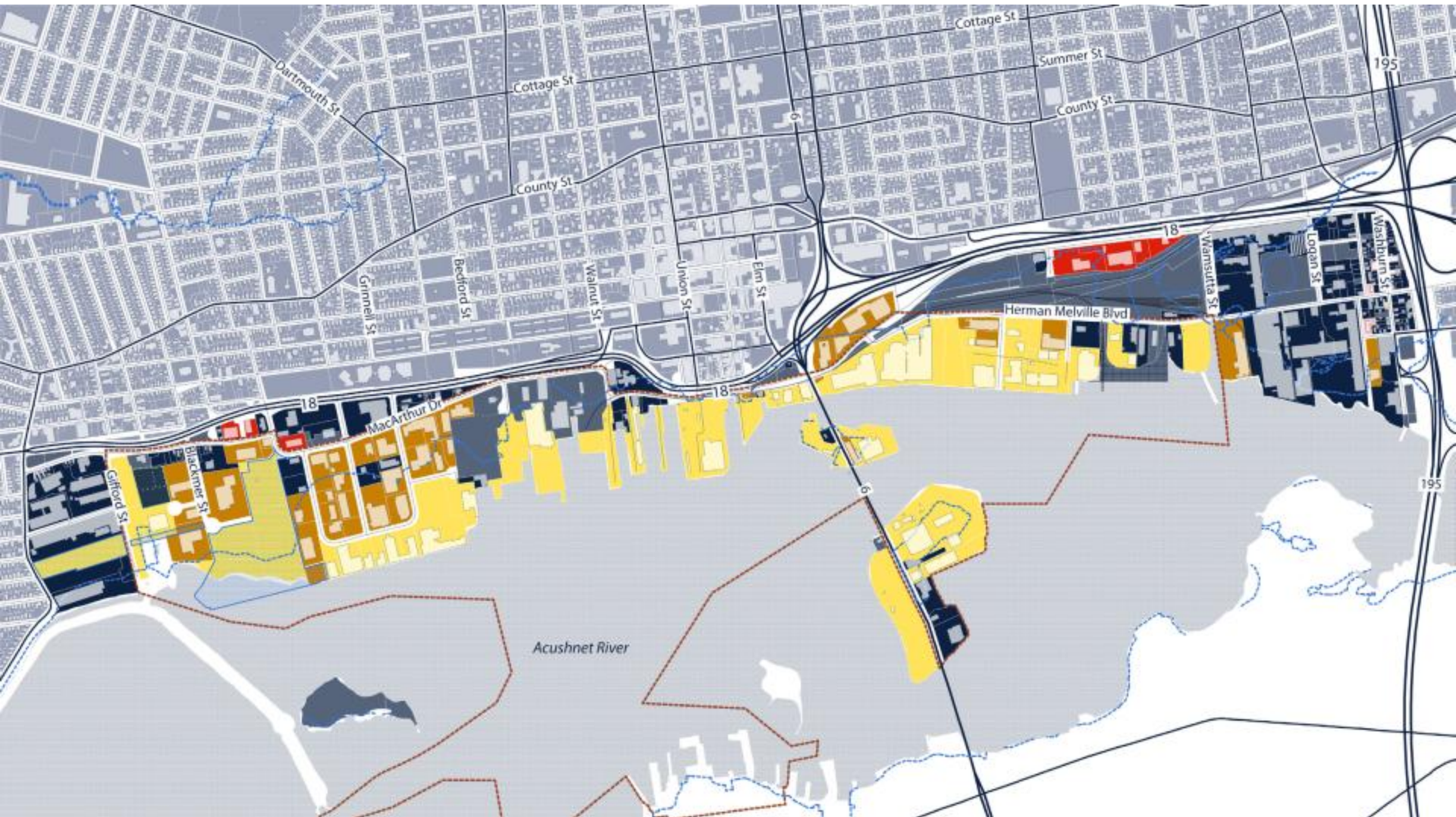


Consumer Liaison Group Meeting

June 14, 2018

Westboro, MA

Port of New Bedford



2016 Economic Impact Report

\$9.8 billion of total economic value

- \$3.3 billion of direct business revenue
- \$6.1 billion of related output
- \$429.4 million of re-spending of direct income and local consumption purchases

36,578 jobs generated by Port activity

- Direct Jobs: 6,225 (91% from seafood industry)
- Induced Jobs: 4,101 (92 % from seafood industry)
- Indirect Jobs: 2,512 (88% from seafood industry)

\$1.2 billion of federal, state and local taxes

- \$150.5 million direct, induced and indirect
- \$358.1 million direct, induced, and indirect federal
- \$200.7 million related taxes/local taxes
- \$534.7 million related federal taxes



LET RIDE

JULIE G

GEORGES BANKS

GEORGES BANKS

HEAR NO EVIL

HEAR NO EVIL

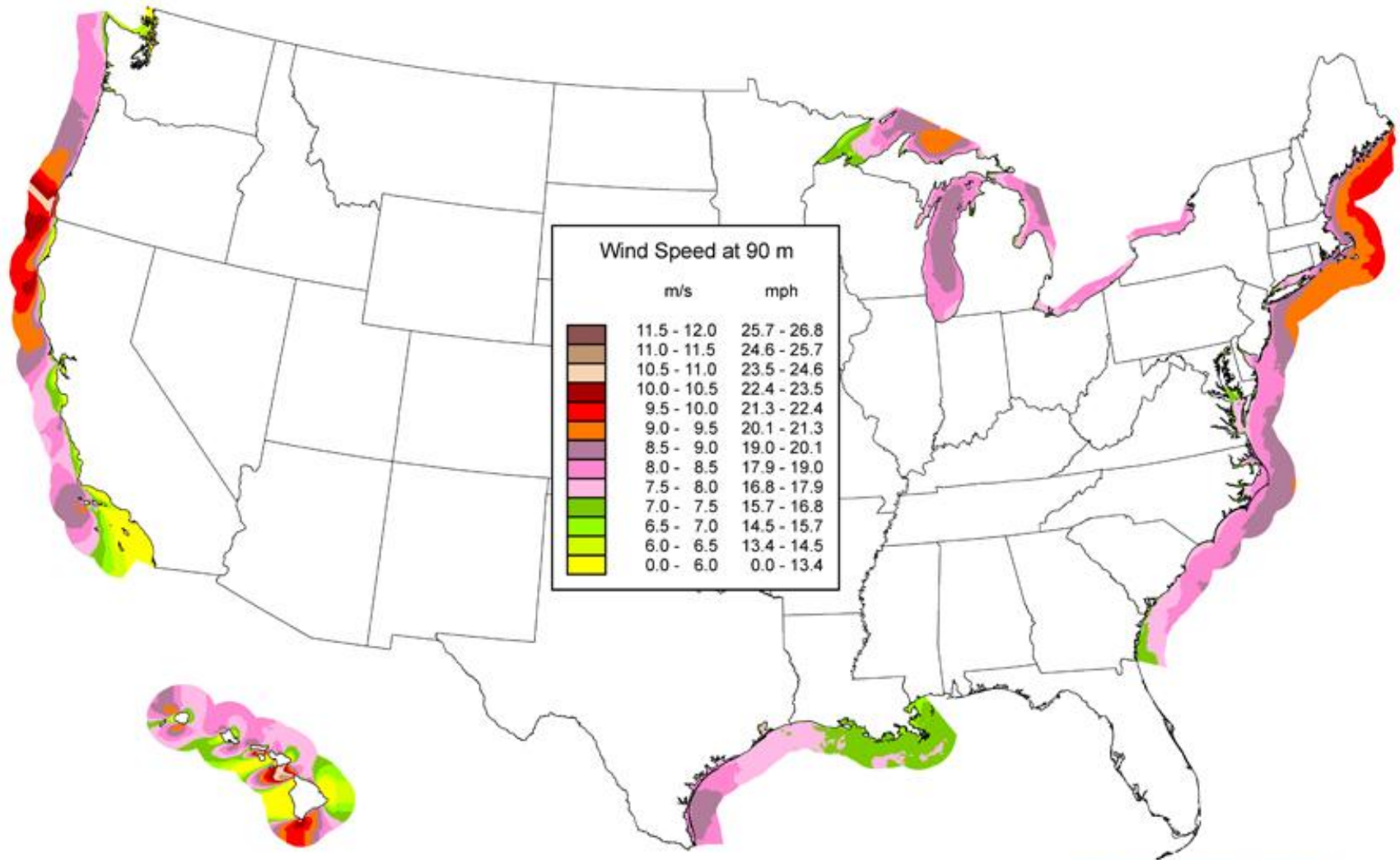


Fishermen
Lumpers
Cutters
Wholesalers
Processors
Fabricators
Shipyards
Fuel Suppliers
Ice Houses
Welders
Truckers
Warehouse Workers

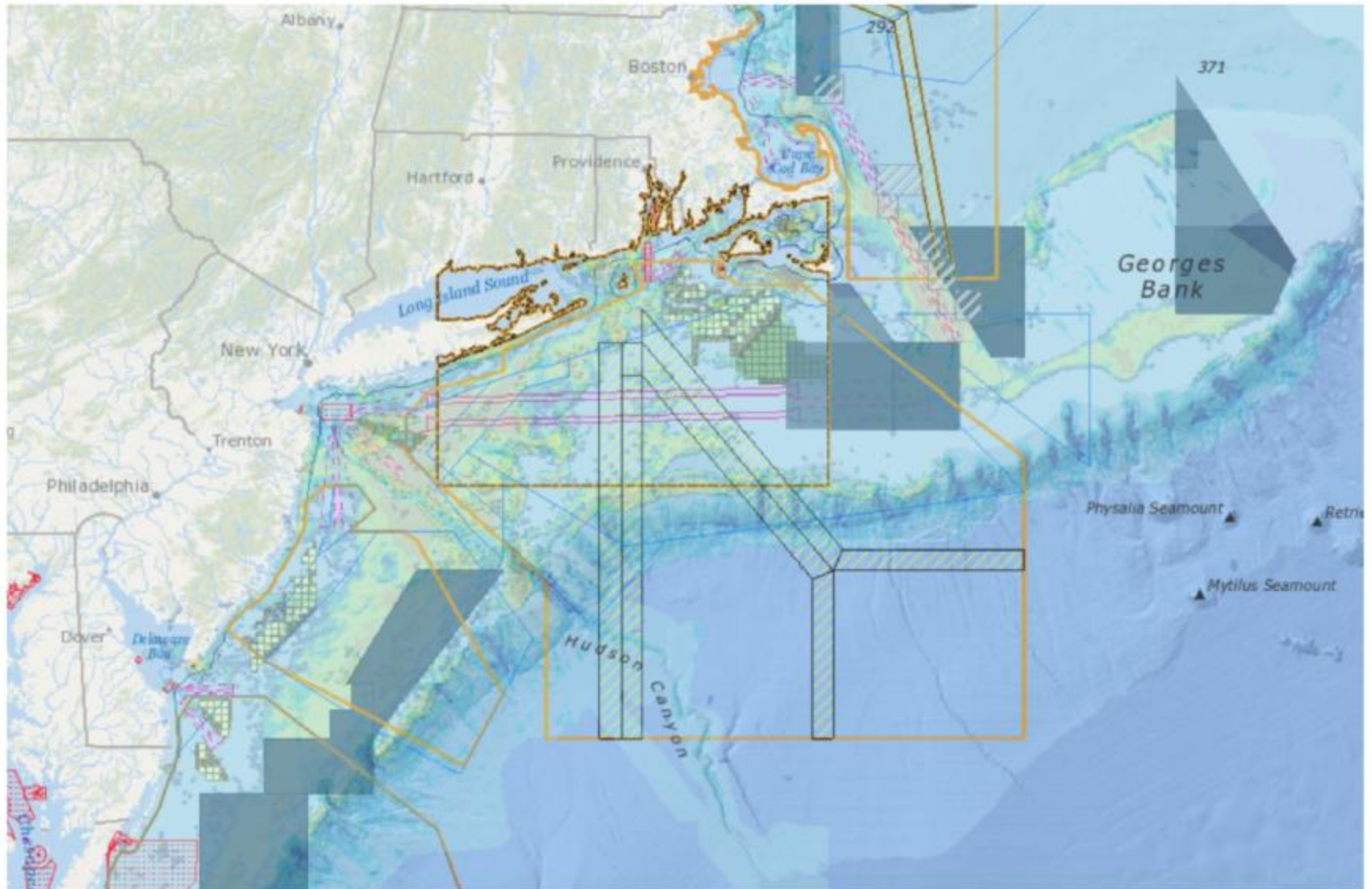
Data scientists
Marine biologists
Chefs
Waitstaff
Medical Device Manufacturers
Pharmaceutical Companies
IoT
Computer Scientists
Beauty product manufacturers

The Offshore Wind Opportunity

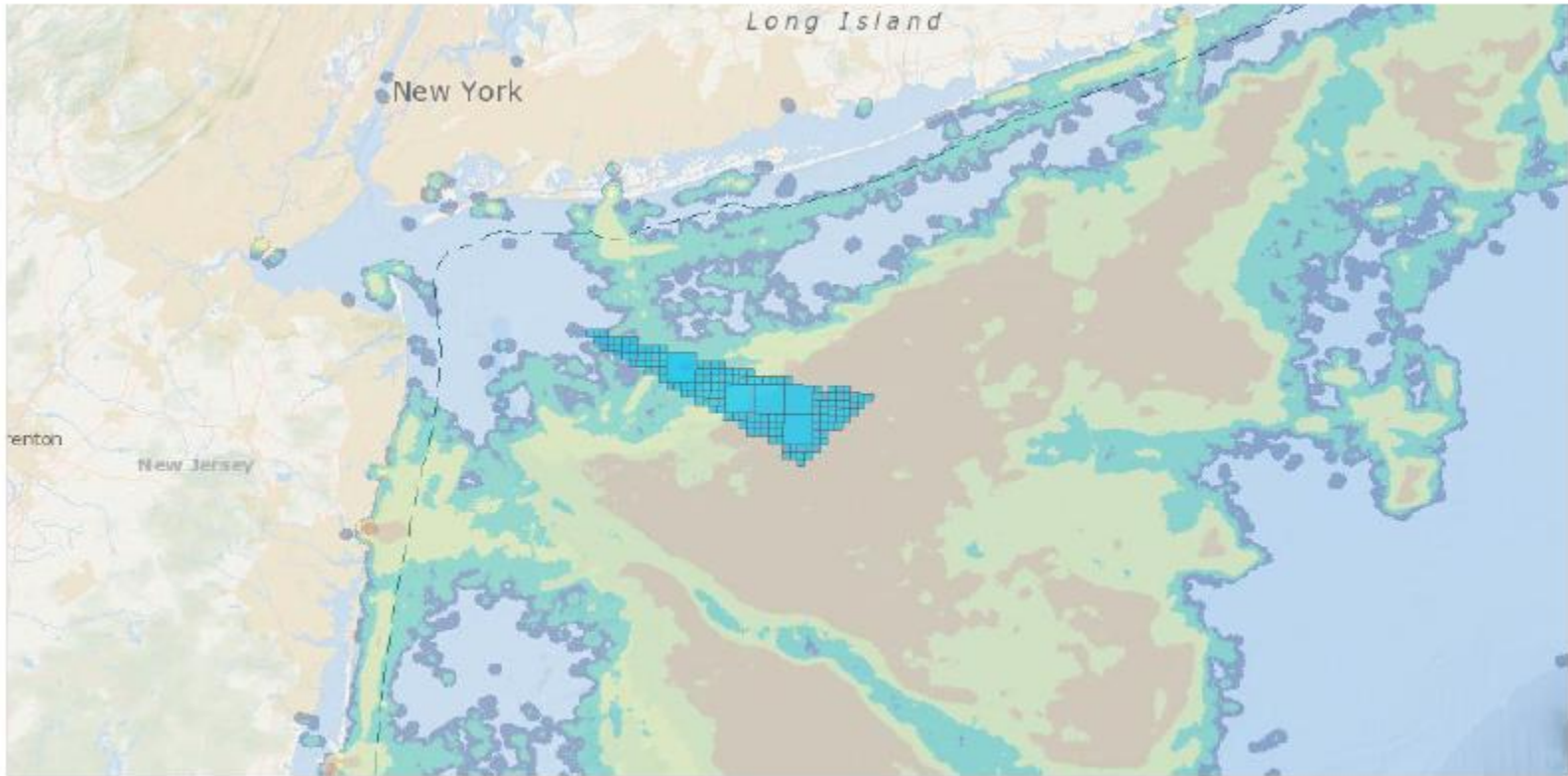
The Natural Resource



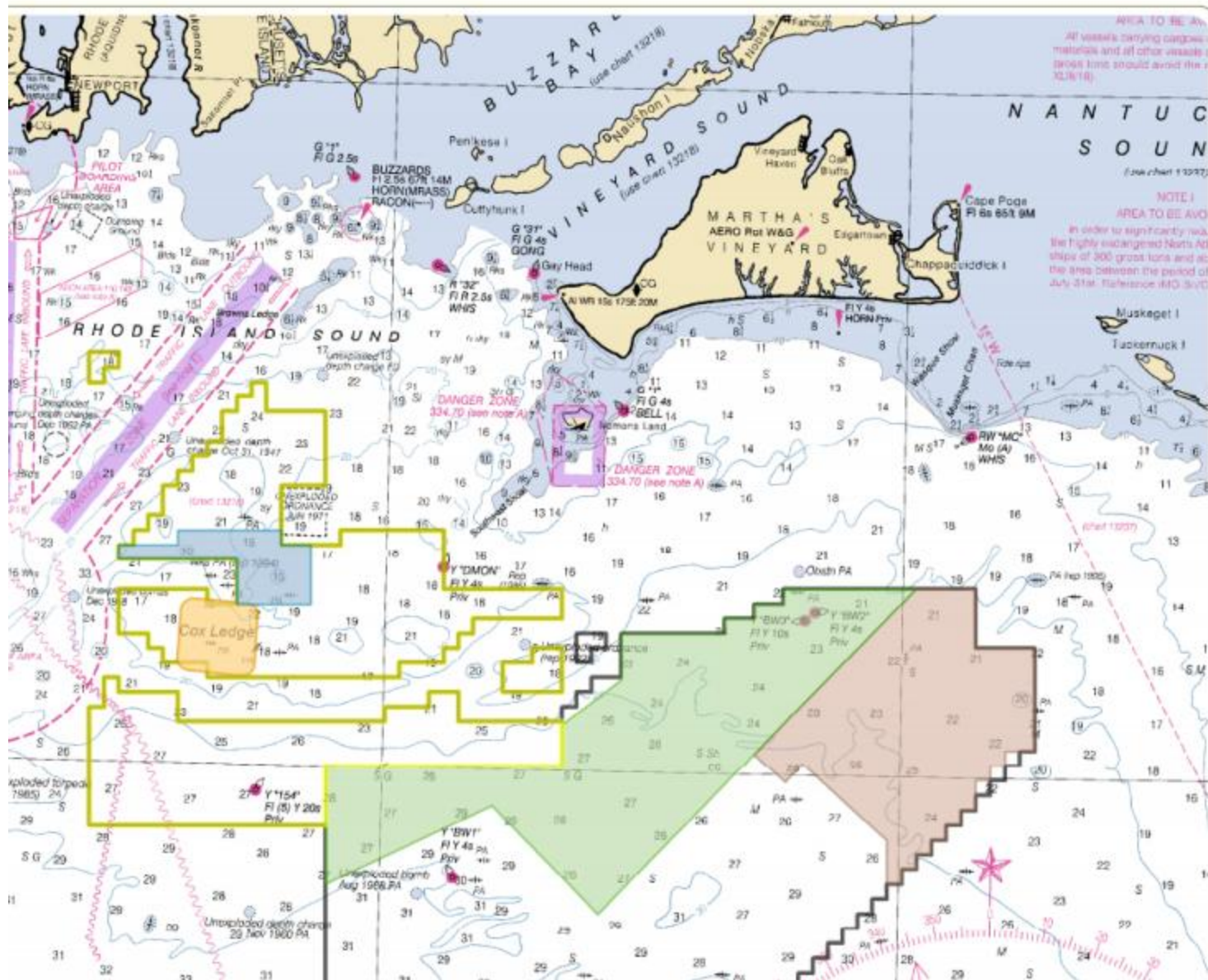
Preventing Conflict between Multiple Users



Scallop Fishery



Current OSW Developments



Deepwater Wind 200 MW Hypothetical Project Layout

- 200 MW Hypothetical Project Area
- BOEM Lease Area
- Deepwater Wind Offshore Lease Area
- Bay State Wind Approximate Development Area
- South Fork Wind Farm Project Area
- Vineyard Wind Approximate Development Area

Notes: 1. Basemap: NOAA Approaches to New York Nantucket Shoals to Five Fathom Bank (12300). 2. This map was generated in ArcMap on March 22, 2018. 3. This is a color graphic. Reproduction in grayscale may misrepresent the data.

How do we capture the OSW opportunity
while supporting our existing users?

Commercial Fishing

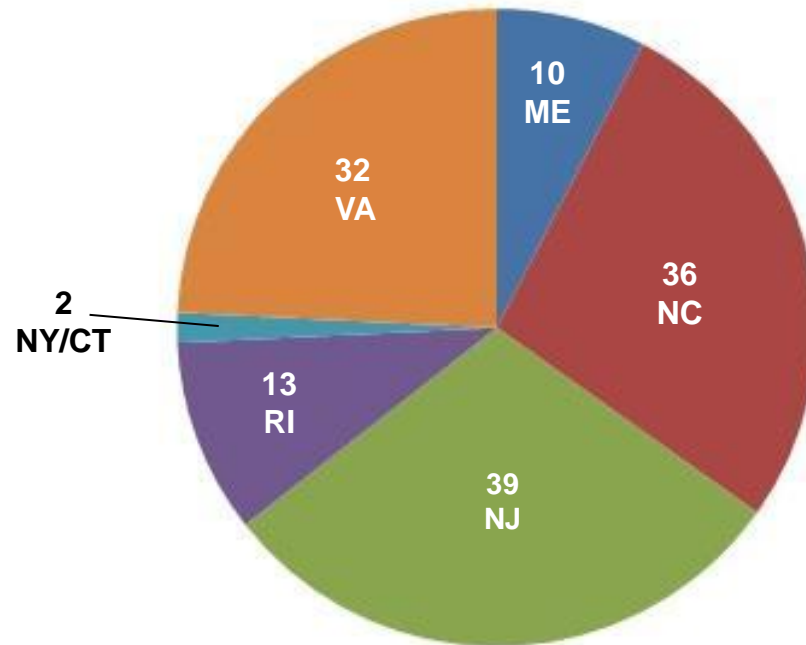
- For the 17th consecutive year, New Bedford was named the #1 Fishing Port in the country by value
- Scallops, groundfish, pelagics, offshore and inshore lobster, surf clams, quahogs, atlantic red crab, herring, mackerel, conch, slime eel, etc
- Global processing hub



The East Coast Fishing Industry is Gravitating to New Bedford

- The Port of New Bedford supports fishing economies from Maine to Florida –
- the pie chart illustrates the number of out-of-state fishing vessels that utilize the municipal docks
- North Terminal would offer much needed berthing space
- There was a 172% increase in new out-of-state vessels from 2015-2016 (from 5 new vessels in 2015 to 12 in 2016).
- There was 200% increase in new out-of-state vessels from 2016-2017 (12 vessels to 36 vessels).

Total Out of State Vessels in New Bedford, 2017

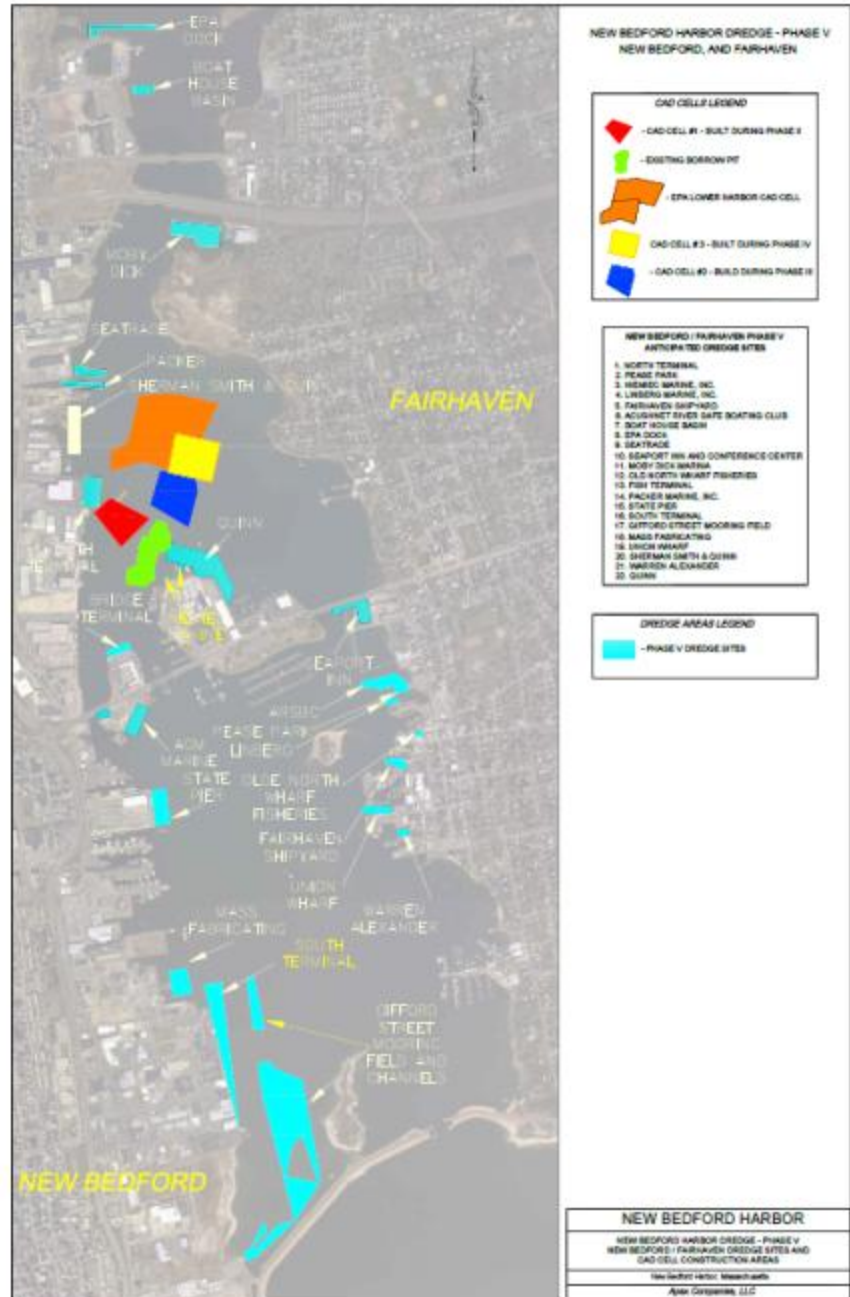


Diversity and Versatility in Water-Dependent Activities

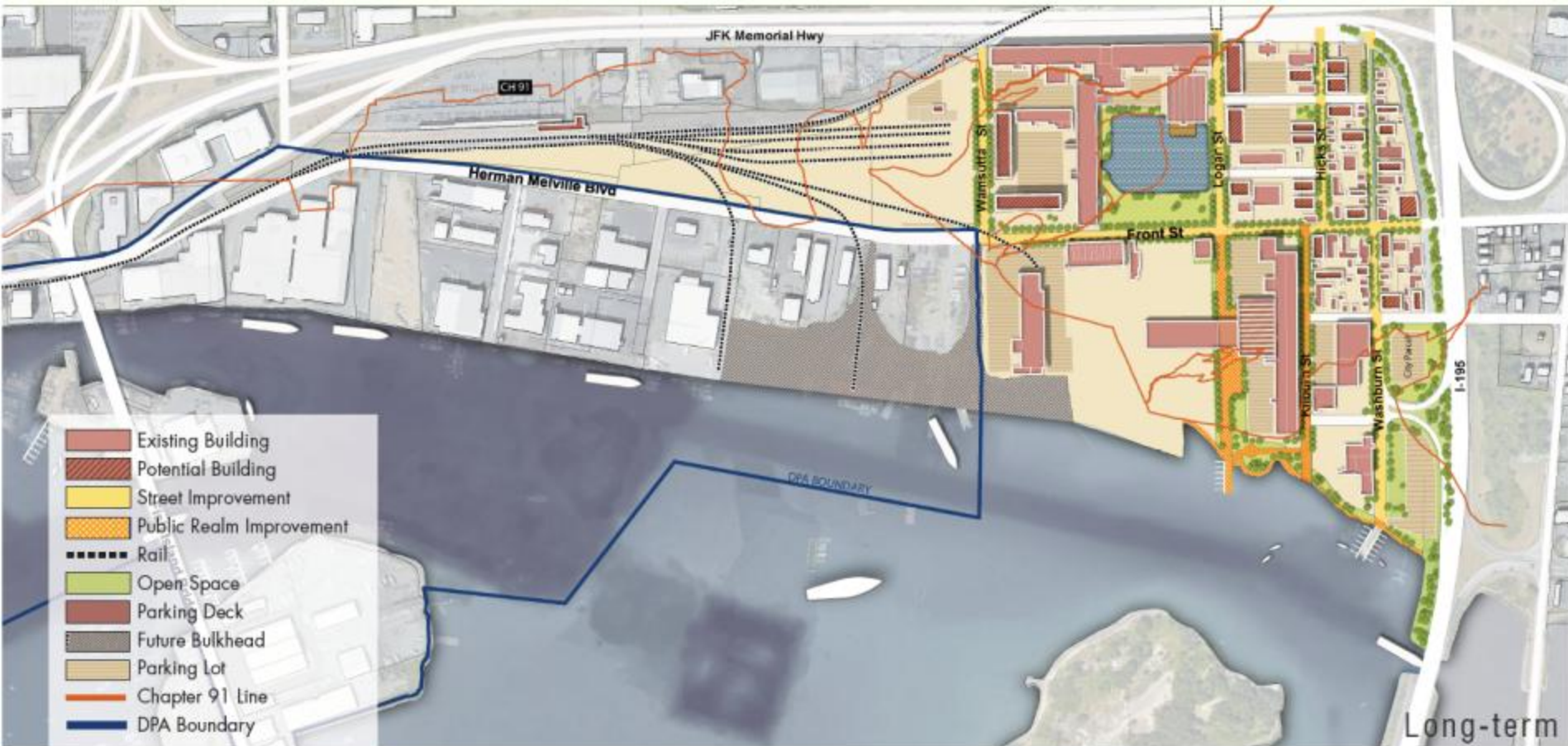
- Bulk, breakbulk Cargoes
- Burgeoning recreational destination
- 26 cruise ships in 2017
- Future center for offshore wind staging
- Marine research leader
- All-purpose marine services industry
- Ferry service to Nantucket, Martha's Vineyard and Cuttyhunk
- Marine technology leader



Dredging New Bedford Harbor



Focus Area North



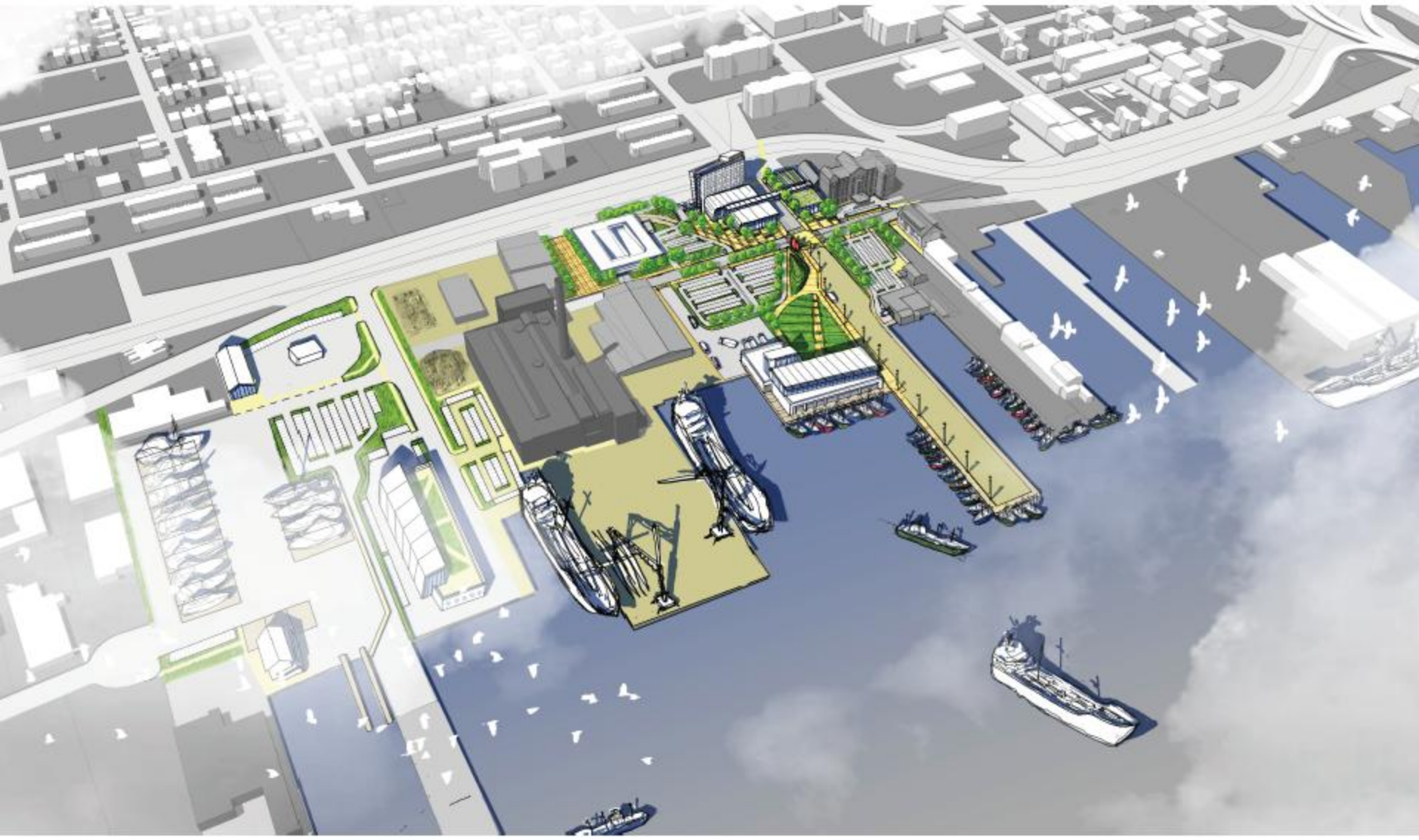
Focus Area North



Focus Area South



Focus Area South





NEW BEDFORD PORT AUTHORITY

Fisheries Advisory Committee on Offshore Wind



Photos Courtesy of Bergies





Freight Forwarding
Electricians
Welders
Cargo Handlers
Offshore supply
Offshore maintenance
Mechanics
Fuel Suppliers
Personnel carriers

brokerages
recruiting agents
hotels
theaters
bakeries
tailors
Insurance brokers
Truck drivers





Thank you!



Ed Anthes-Washburn
Executive Director
Port of New Bedford
ewashburn@newbedford-ma.gov