

Training Disclaimer: ISO New England (ISO) provides training to enhance participant and stakeholder understanding. Not all issues and requirements are addressed by the training. Consult the effective [Transmission, Markets and Services Tariff](#) and the relevant [Market Manuals](#), [Operating Procedures](#) and [Planning Procedures](#) for detailed information. In case of a discrepancy between training provided by ISO and the Tariff or Procedures, the meaning of the Tariff and Procedures shall govern.

September 3, 2020
WebEx Broadcast

Settlements Forum

2020 Q3



Jin Thian

Market Analysis & Settlements

forum

Topics



New Tools and Enhancements

- Enhancement to Internal Bilateral Transactions User Interface
- Mystic Cost of Service estimation worksheet



Informational Items

- Cost Allocation Matrix
- 2020 Meeting Dates

New Tools and Enhancements

- *Enhancement to Internal Bilateral Transactions User Interface*
- *Mystic Cost of Service estimation worksheet*



Enhancement to Internal Bilateral Transactions (IBT) User Interface

Spring 2020



(Existing) Use Web Services to download subaccount information

(New) Download subaccount information in CSV/XML via the IBT UI

Submittal of an IBT serves to attest the IBT is backed by a physical transfer of electricity or MW obligation

Subaccounts... User: LSE1

Search For Existing Mappings

☐ Contract ID:

☐ Reference ID:

☐ Subaccount ID:

☐ Subaccount Name:

☒ Category: Energy Day Ahead

☐ Location:

☐ Party:

☐ Start Date:

☐ End Date:

Reset Refresh Find **Download CSV** **Download XML**

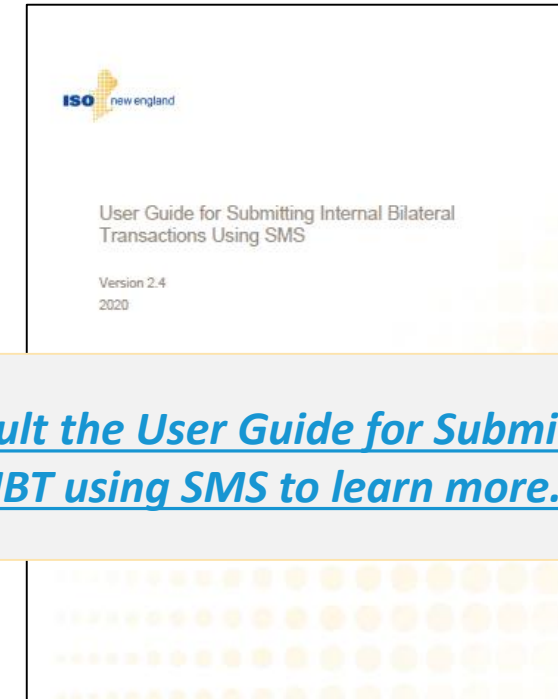
Mappings

Contract...	Market	Buyer	Seller	Contract Period	Status	Mapping Period	Subaccount ID	Subaccount Na...
48000	Energy DA	VIU2	LSE1	06/01/2018 - 06/01/2018	Conf	06/01/2018 - 06/01/2018	9002	Unassigned activity

Page 1 of 1

Submit Return

Subaccount
Details



[Consult the User Guide for Submitting IBT using SMS to learn more.](#)

See Ask ISO articles:

- [Announcement about downloading subaccount information](#)

Mystic Cost of Service Estimation Worksheet



The **Mystic Cost of Service Agreement** ([ER18-1639-000](#)) provides monthly supplemental capacity payments to the Mystic resources in the 2022/23 and 2023/24 capacity commitment periods (CCP).

User guide for worksheet

FILTERS

Resources for Fuel Security (2)

PUBLISHED DATE

☒ Any Date

Start Date: YYYY-MM-DD

End Date: YYYY-MM-DD

DOCUMENT TYPE

Sorted by Alpha

Sort by Count

☐ FERC Filings (2)

☐ Meeting Agendas (8)

☐ Meeting Materials (96)

☐ Meeting Minutes (11)

☒ Mystic Cost of Service Estimation Tool (2)

DOCUMENTS

	TITLE AND DESCRIPTION	DATE	TYPE	SIZE
<input checked="" type="checkbox"/>	Mystic Cost of Service – User Guide for Estimation Worksheet Guide to using calculation tool to create estimates of supplemental capacity payments to resources retained for reliability in 2022/23 and 2023/24. Results in the worksheet will be estimates only and will not be equal to the actual payments made when settled by the ISO.	07/09/2020	PDF	491KB
<input type="checkbox"/>	Mystic Cost of Service - Estimation Worksheet Calculation tool for estimating supplemental capacity payments to resources retained for reliability in 2022/23 and 2023/24. User provides assumptions for values of variables. Results in the worksheet will be estimates only and will not be equal to the actual payments made when settled by the ISO.			

Download Selected Files

Estimation Worksheet

Helps estimate monthly supplemental capacity payments

[Committees and Groups > Key Projects > Forward Capacity Market: Retain Resources for Fuel Security Key Project \(filtered results\)](#)

Informational Items

- *Cost Allocation Matrix*
- *Settlements Forum Dates*
- *Questions*



Cost Allocation Matrix



Allocation of Load-Based and Other Charges								
Effective April 1, 2019								
Market	Charges	Allocation Method	Standard Settlement	Reference(s)	RNLCR ¹	WLCR ²		
Day-Ahead (DA) Energy	Locational DA Energy	Negative DA Locational Adjusted Net Interchange	N	MR-1, III.3.2.1 (f)	M-28, 2.1			
	Locational DA Loss	Negative DA Locational Adjusted Net Interchange	N	MR-1, III.3.2.1 (f)	M-28, 2.1			
Real-Time (RT) Energy	Charges		Allocation Method					
	Locational DA Energy	Negative DA Locational Adjusted Net Interchange						✓
	Locational DA Loss	Negative DA Locational Adjusted Net Interchange						✓
	Locational DA Congestion	Negative DA Locational Adjusted Net Interchange						✓
	DA Loss Revenue	Share of Marginal Loss Revenue Load Obligation						✓
Regulation	Locational RT Energy	Negative RT Locational Adjusted Net Interchange Deviation						✓
	Locational RT Loss	Negative RT Locational Adjusted Net Interchange Deviation						✓
	Locational RT Congestion	Negative RT Locational Adjusted Net Interchange Deviation						✓
	Locational RT Demand Reduction	Negative RT Locational Demand Reduction Obligation Deviation						
DA Net Commitment	RT Demand Reduction Charge	Share of RT Load Obligation excluding RTLO at all External Nodes and RTLO incurred by DARDs						
	RT Loss Revenue	Share of Marginal Loss Revenue Load Obligation (excludes Coordinated External Transactions (CETs))						
	Inadvertent Energy	Share of RT Generation Obligation plus RT Load Obligation plus Demand Reduction Obligation, measured as absolute values (excludes CETs)						

[Markets and Operations > Market Performance > Load Costs \(filtered list\)](#)



Settlements Forum Dates 2020



Thursday, March 5 at 10:00 AM



Thursday, June 4 at 10:00 AM



Thursday, September 3 at 10:00 AM



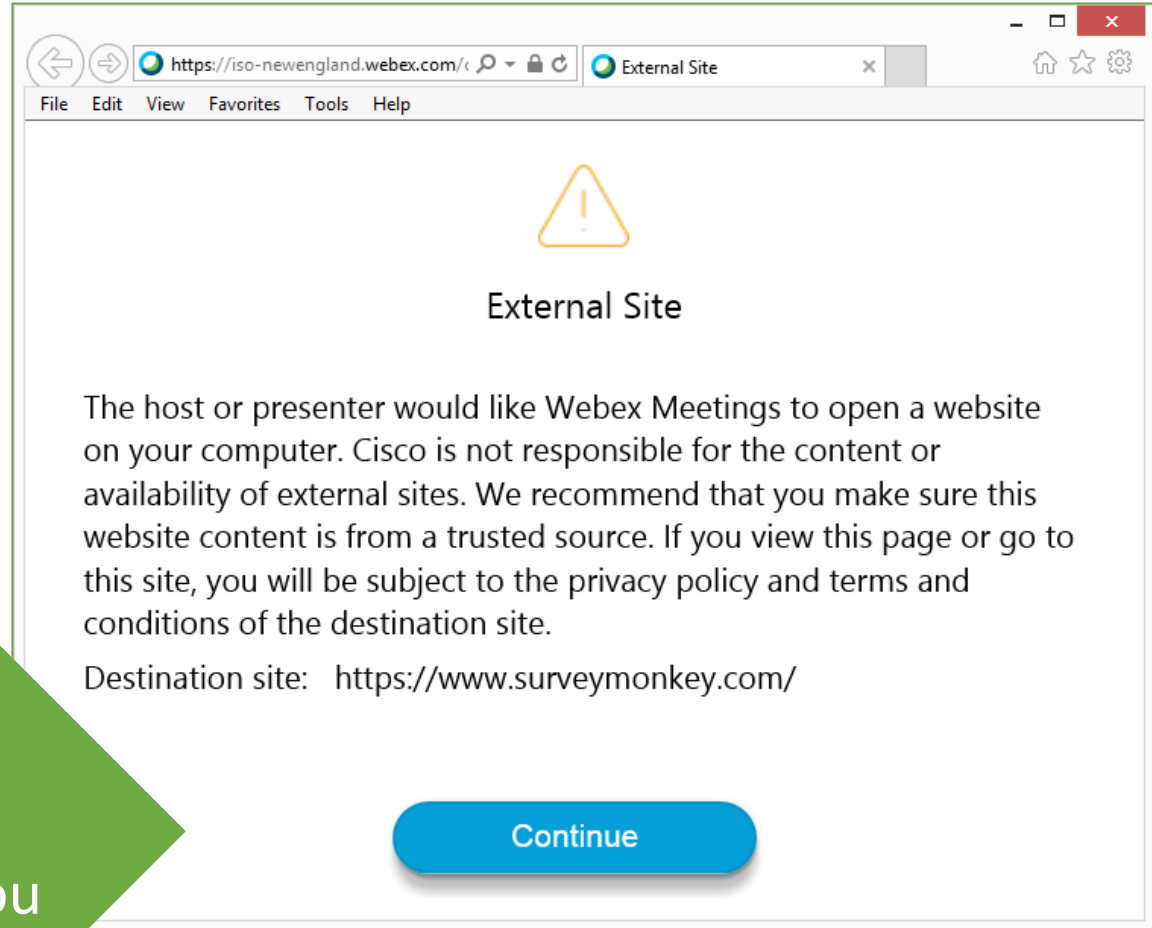
Thursday, December 3 at 10:00 AM

Questions



Your feedback is important!

Please click the **Continue** button and complete our short evaluation after you close out of the session.



Contact Participant Support and Solutions



Submit a request via Ask ISO *(preferred)*
<https://askiso.force.com/>

Email AskISO@iso-ne.com

Phone

(413) 540-4220 (call center)

(833) 248-4220

Pager *(for emergency inquiries outside of business hours)*

(877) 226-4814

**Business hours and
additional contact details
are available from the
Participant Support page**

[Visit the Participant Support page](#)

Appendix

Settlements Forum 2020 Q3

Q&A from the live webinar September 3, 2020

1: If I do not participate in the Forward Capacity Market (FCM), will I be affected by the Mystic Cost of Service Agreement?

Customers who do not participate in the FCM may still be affected by the Mystic Cost of Service Agreement, which will be charged out pool-wide to customers with Real Time Load Obligation.

2: Why didn't you discuss the change to the Day-Ahead Energy Market submission window, which was filed with the FERC with a requested effective date of September 30, 2020?

Changes were filed with FERC to extend the Day-Ahead Energy Market submission window from its current close at 10:00 a.m. to a new close of 10:30 a.m. We generally limit the market changes presented in this forum to those directly impacting the settlement. This change is a process modification for the submission of bids and offers to the Day-Ahead Market; it will not change any aspect of the settlement.