



# December 2022 Distributed Generation Survey Results

---

*Distributed Generation Forecast*

*Working Group*

Tim Costa

LOAD FORECAST ANALYST, SYSTEM PLANNING



# DECEMBER 2022 PHOTOVOLTAIC (PV) SURVEY RESULTS

# Notice: Slide Deck Updated

- This presentation has been updated since the February 17<sup>th</sup>, 2023 DGFWG meeting to include 16 MW of BTM PV that were not originally included in VEC's totals.



# Determining Cumulative PV Totals

## *December 2022 Distribution Owner Survey Data*

- ISO requested distribution owners to provide the total nameplate of all individual PV projects (in MW<sub>AC</sub>) that is already installed and operational within their respective service territories as of December 31, 2022
  - PV projects include FCM, EOR, and BTM PV projects
- The following Distribution Owners responded:

CT	CL&P, CMEEC, UI
ME	CMP, Versant
MA	Braintree, Chicopee, Reading, National Grid, NSTAR, Shrewsbury, Unitil, WMECO
NH	Liberty, NHEC, PSNH, Unitil
RI	Rhode Island Energy
VT	Burlington, GMP, Stowe, VEC, VPPSA, WEC

- Thank you to all respondents for providing timely information
- Based on respondent submittals, installed and operational PV resource totals by state and distribution owner are listed on the next slides

# December 2022 Cumulative PV Totals

## State-by-State

The table below reflects statewide aggregated PV data provided to ISO by regional Distribution Owners. The values represent installed nameplate as of 12/31/22.

State	Installed Capacity (MW <sub>AC</sub> )	No. of Installations
Massachusetts*	3,289	150,020
Connecticut	912	73,553
Vermont*	468	19,348
New Hampshire	183	14,427
Rhode Island	326	17,034
Maine	295	8,583
<b>New England</b>	<b>5,473</b>	<b>282,965</b>

\* Includes values based on MA SREC data or VT SPEED data

# December 2022- Cumulative PV Totals (1 of 2)

## Summary of Distribution Owner PV Data

State	Utility	Installed Capacity (MW <sub>AC</sub> )	No. of Installations
CT	Connecticut Light & Power	711	54,496
	Connecticut Municipal Electric Energy Co-op	15	9
	United Illuminating	186	19,048
	<b>Total</b>	<b>912</b>	<b>73,553</b>
MA	Braintree Electric Light Department	6	43
	Chicopee Electric Light	13	43
	Unitil (FG&E)	48	2,623
	National Grid	1,721	80,359
	NSTAR	993	49,378
	Reading Municipal Lighting Plant	4	224
	Shrewsbury Electric & Cable Operations	7	131
	SREC I	54	589
	SREC II	97	1,672
	Western Massachusetts Electric Company	346	14,958
	<b>Total</b>	<b>3,289</b>	<b>150,020</b>
ME	Central Maine Power	259	7,554
	Versant*	36	1,029
	<b>Total</b>	<b>295</b>	<b>8,583</b>

\* Does not include installations in Maine Public District

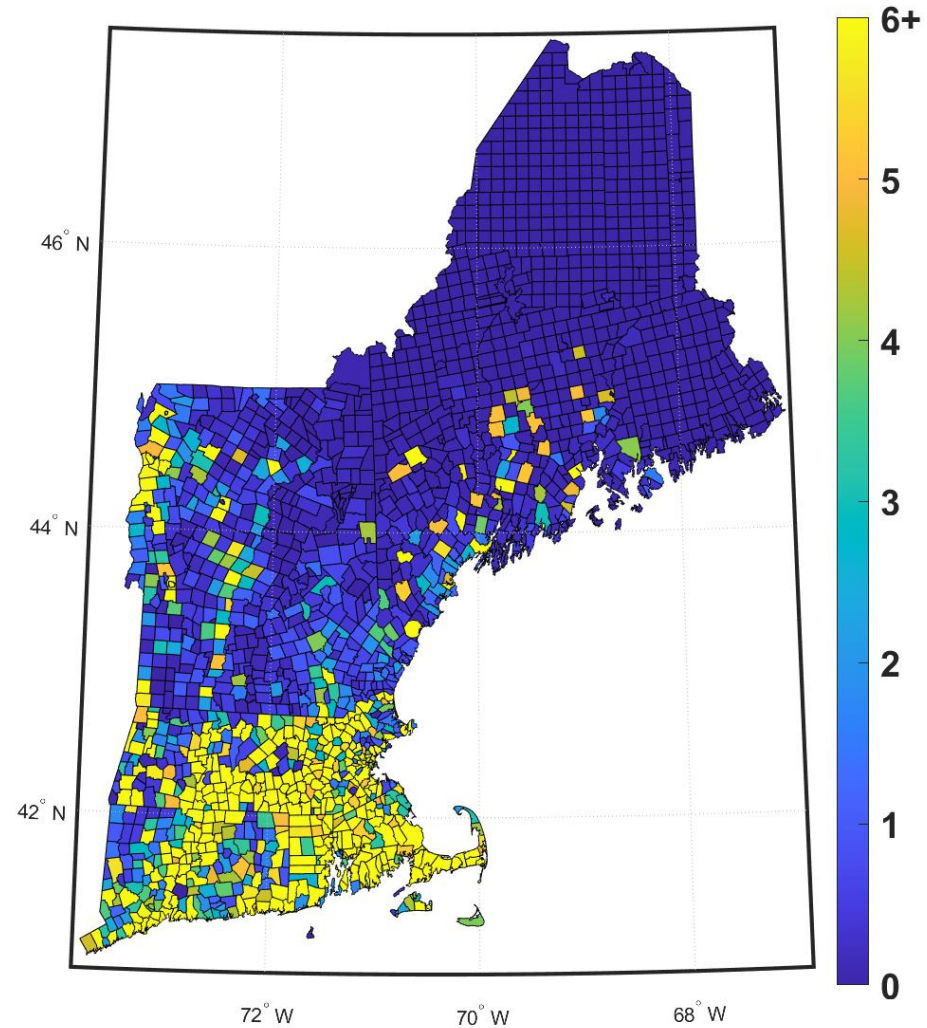
# December 2022 Cumulative PV Totals (2 of 2)

## *Summary of Distribution Owner PV Data*

State	Utility	Installed Capacity (MW <sub>AC</sub> )	No. of Installations
<b>NH</b>	Liberty Utilities	15	1,056
	New Hampshire Electric Co-op	18	1,573
	Public Service of New Hampshire	133	10,270
	Unitil (UES)	17	1,528
	<b>Total</b>	<b>183</b>	<b>14,427</b>
<b>RI</b>	National Grid	326	17,034
	<b>Total</b>	<b>326</b>	<b>17,034</b>
<b>VT</b>	Burlington Electric Department	9	376
	Green Mountain Power	384	15,047
	Stowe Electric Department	3	115
	Vermont Electric Co-op	42	2,311
	Vermont Public Power Supply Authority	22	709
	Washington Electric Co-op	7	790
	<b>Total</b>	<b>468</b>	<b>19,348</b>
<b>New England</b>		<b>5,473</b>	<b>282,965</b>

# Installed PV Capacity as of December 2022

## *Regional Heat Map*

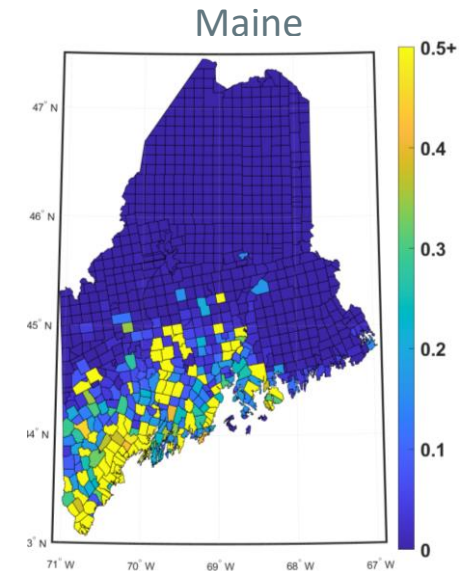
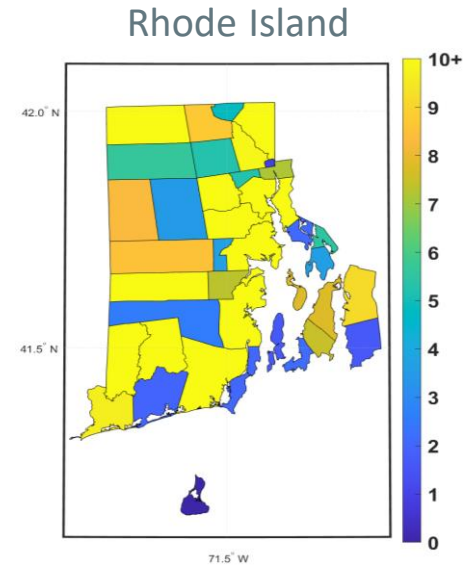
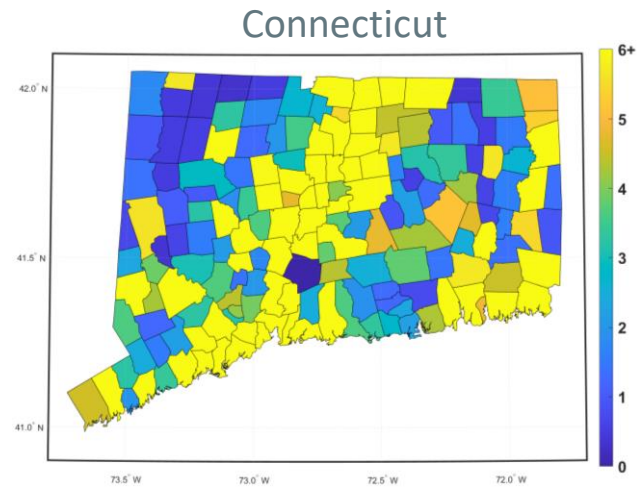
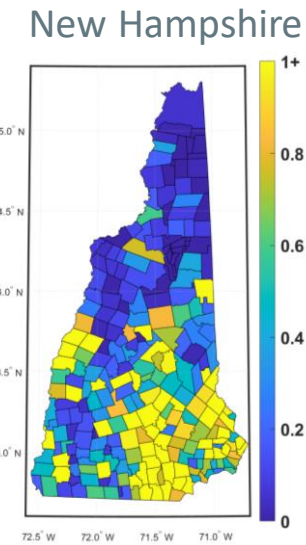
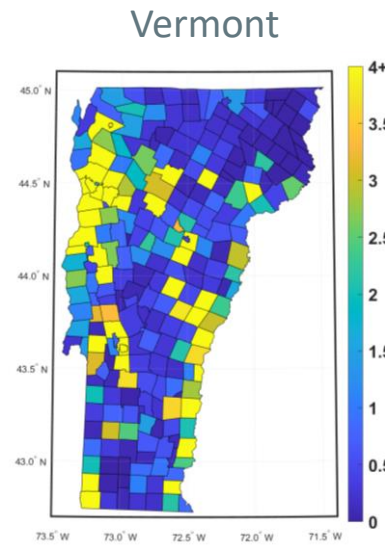
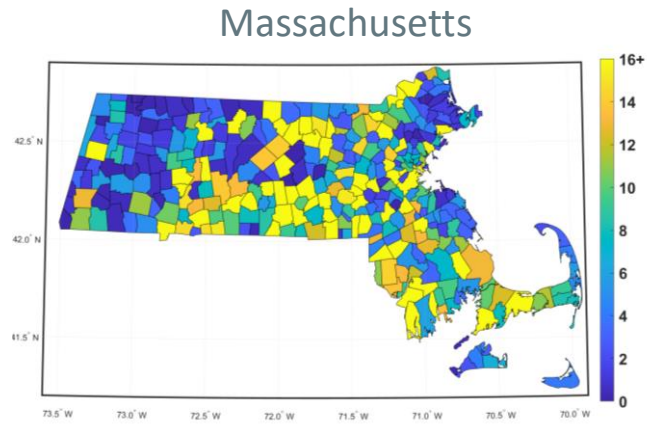


*Note: Legend to the right of heat map shows color scale of nameplate megawatts per town*



# Installed PV Capacity as of December 2022

## State Heat Maps



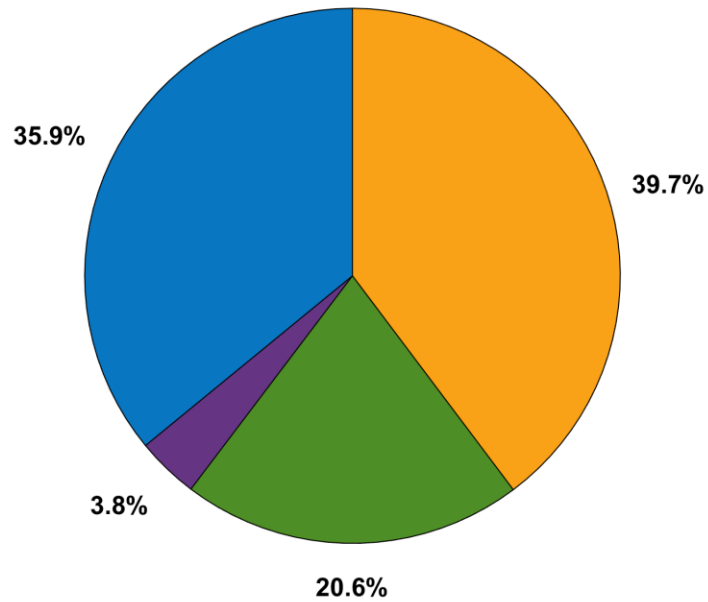
*Note: Legend to the right of each state plot shows color scale of nameplate megawatts per town*

# Installed PV Capacity as of December 2022

ISO-NE by Size Class

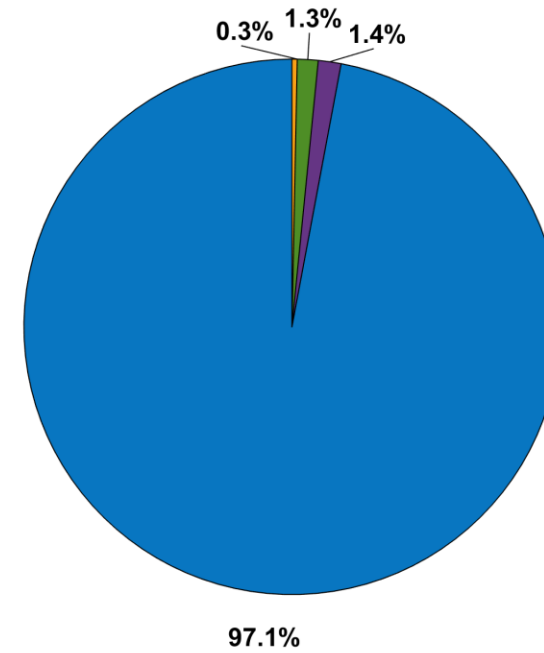
## Installed Capacity ( $MW_{AC}$ )

Total = 5,473  $MW_{AC}$



## Number of Sites

Total = 282,965



# Questions

