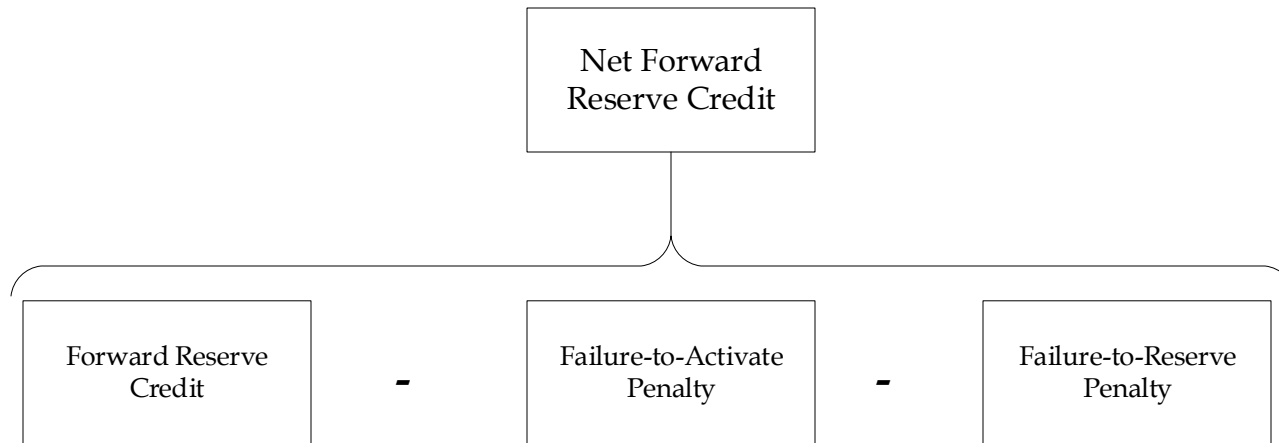
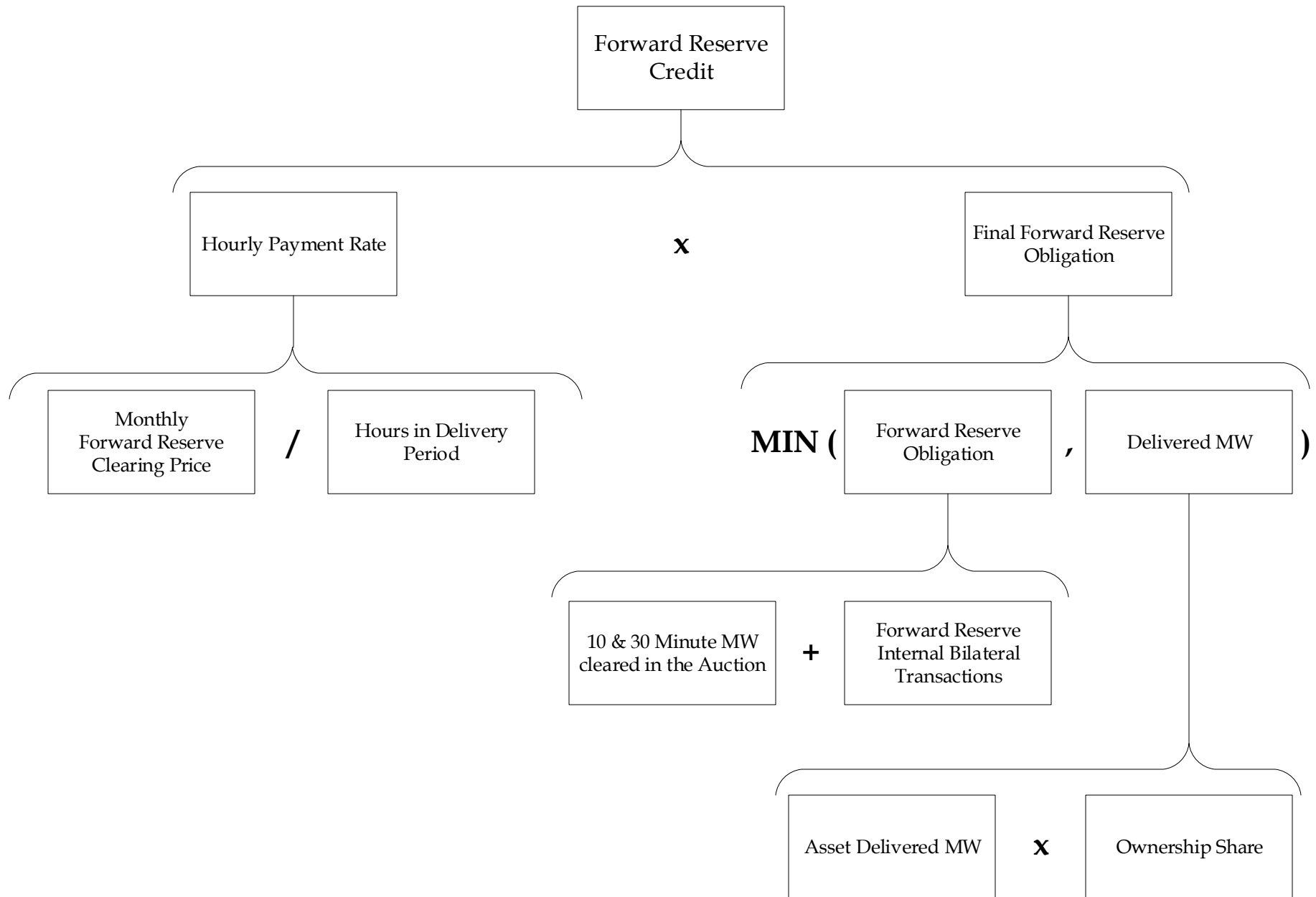
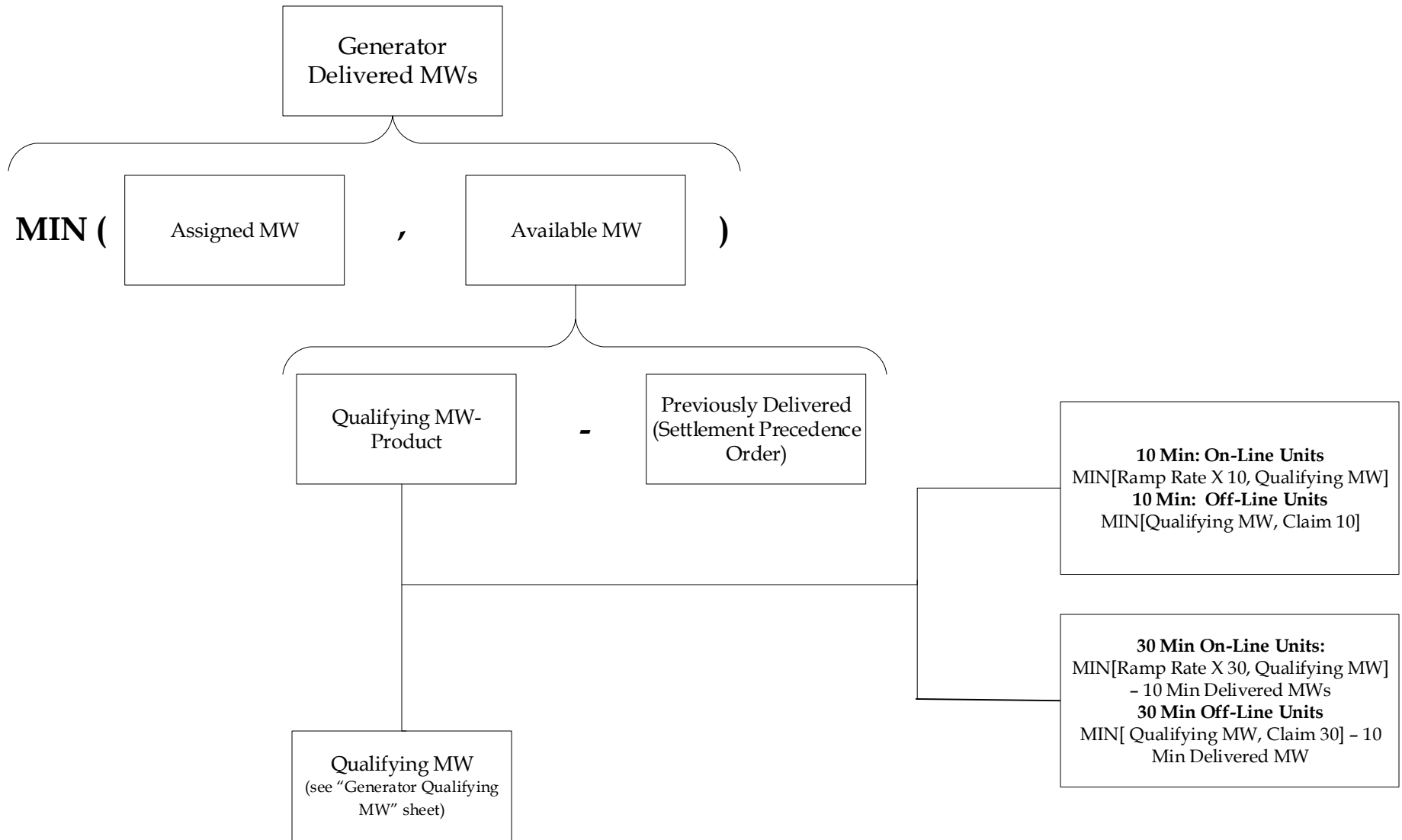


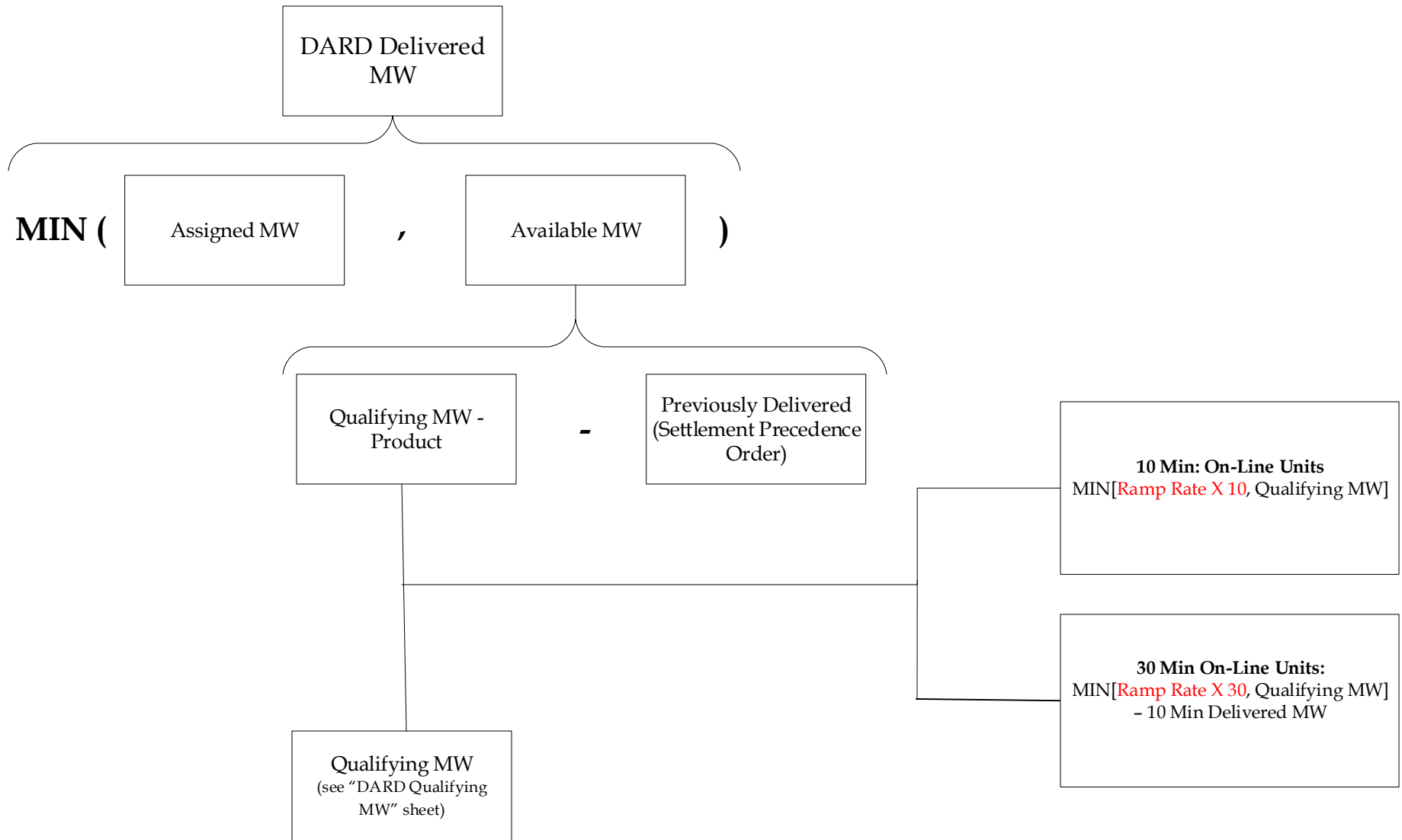
Note: The relevant ISO New England Markets, Services and Transmission Tariff and the relevant Market Manuals, Operating Procedures and Planning Procedures shall govern.

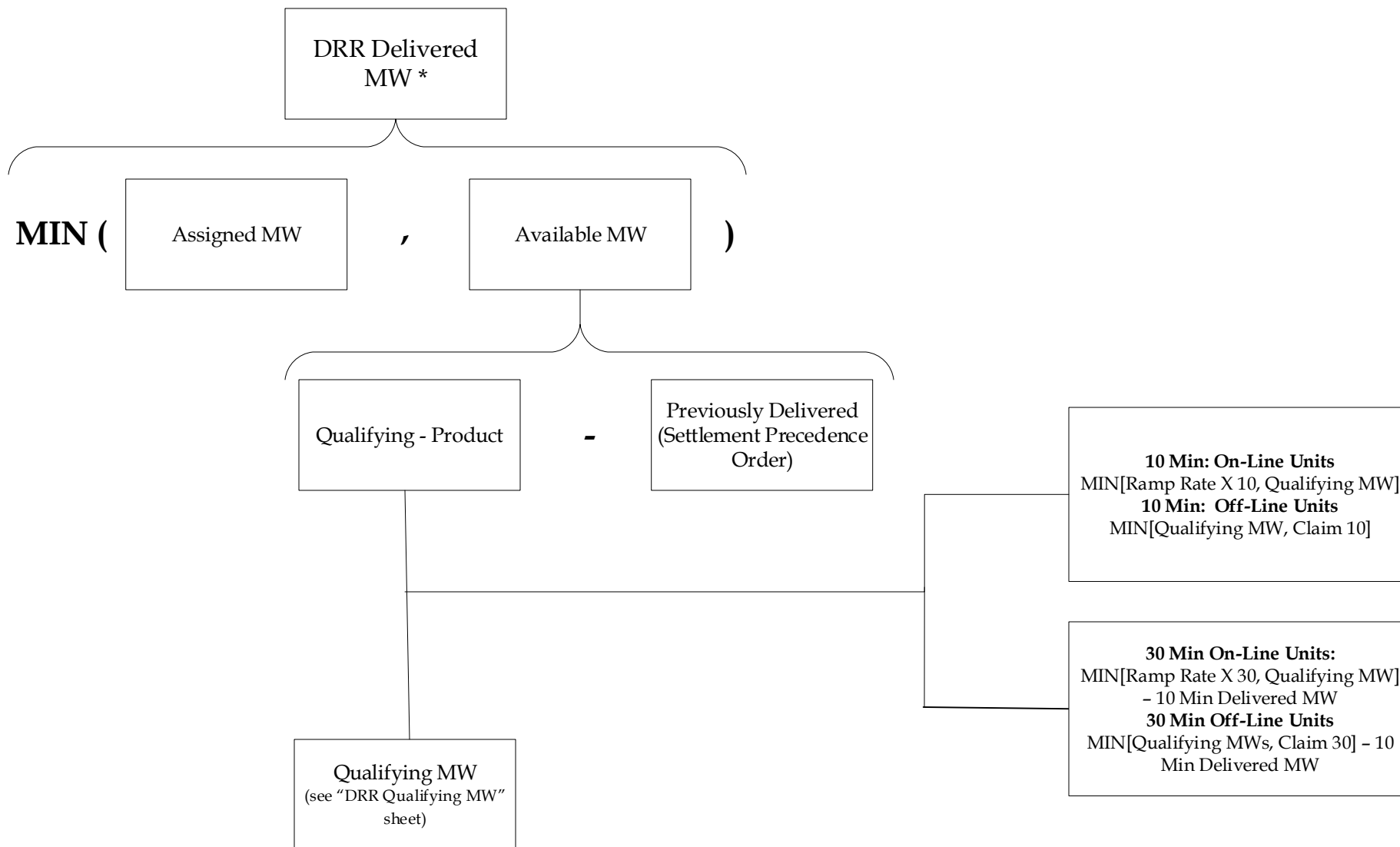
Acronyms	
Acronym	Definition
ARD	Asset Related Demand
CETICZ	Capacity Export Through Import Constrained Zone
DARD	Dispatchable Asset Related Demand
DRR	Demand Response Resource
FCA	Forward Capacity Auction
LMP	Locational Marginal Price
TMNSR	Ten Minute Non-Spinning Reserve
TMOR	Thirty Minute Operating Reserve
Related Calculation Summaries	
Calculation Summary	Related Market
RT_reserve_calc	Real-Time Reserve Market
Related Market Information Server (MIS) and World-wide Web (WW) Reports	
Report Code	Report Long Name
SD_RSVASTDTL	Reserve Asset Detail Report
SD_RSVASTDTL5MIN	Reserve Asset Detail Five Minute Report
SD_RSVTRANSACT	Forward Reserve Transaction Activity Report
SR_RSVCHARGE	Reserve Market Customer Charges Report
SR_RSVSTL	Reserve Market Settlement Report
SR_RSVZONESUM	Reserve Market Zonal Summary Report



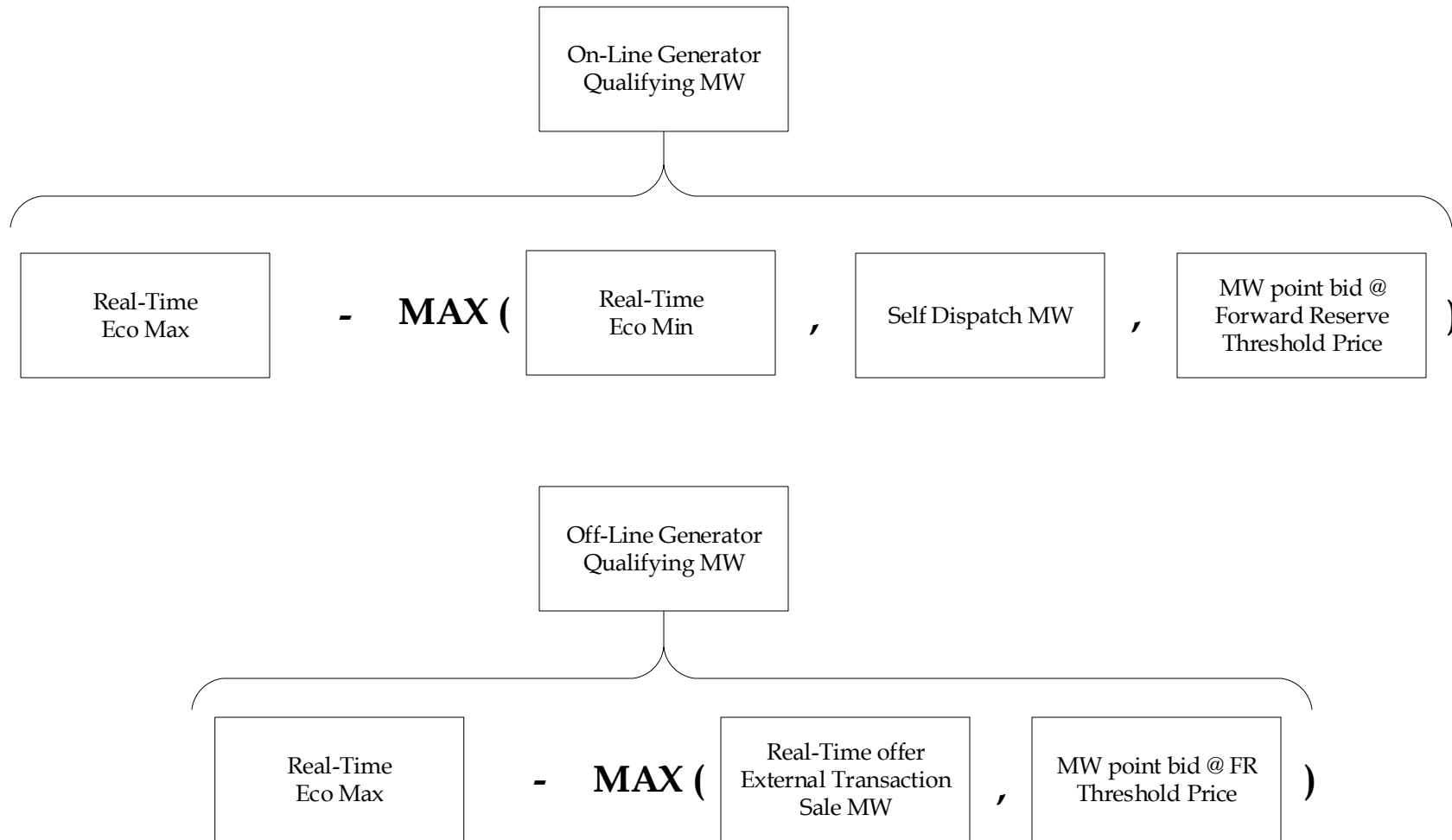


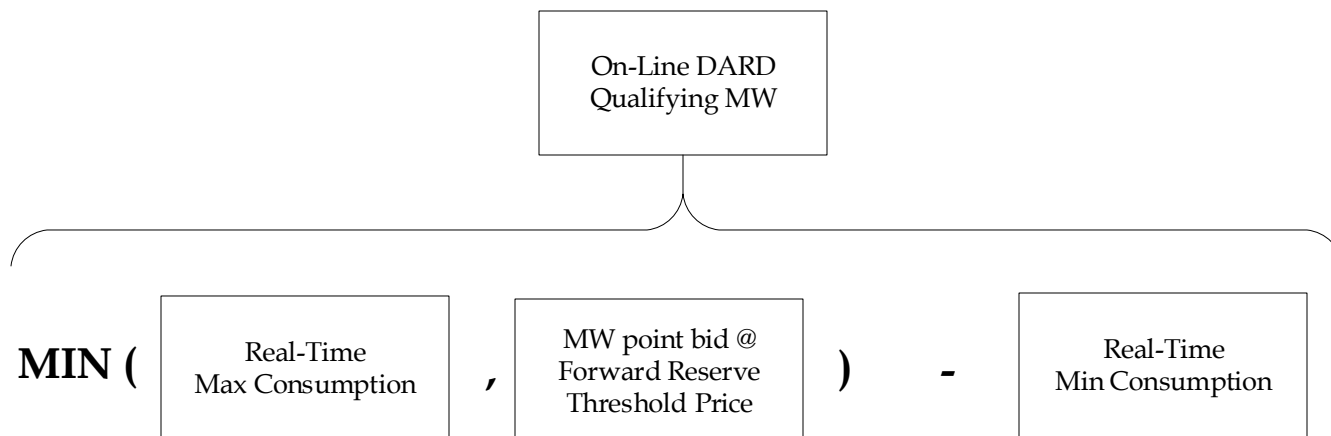


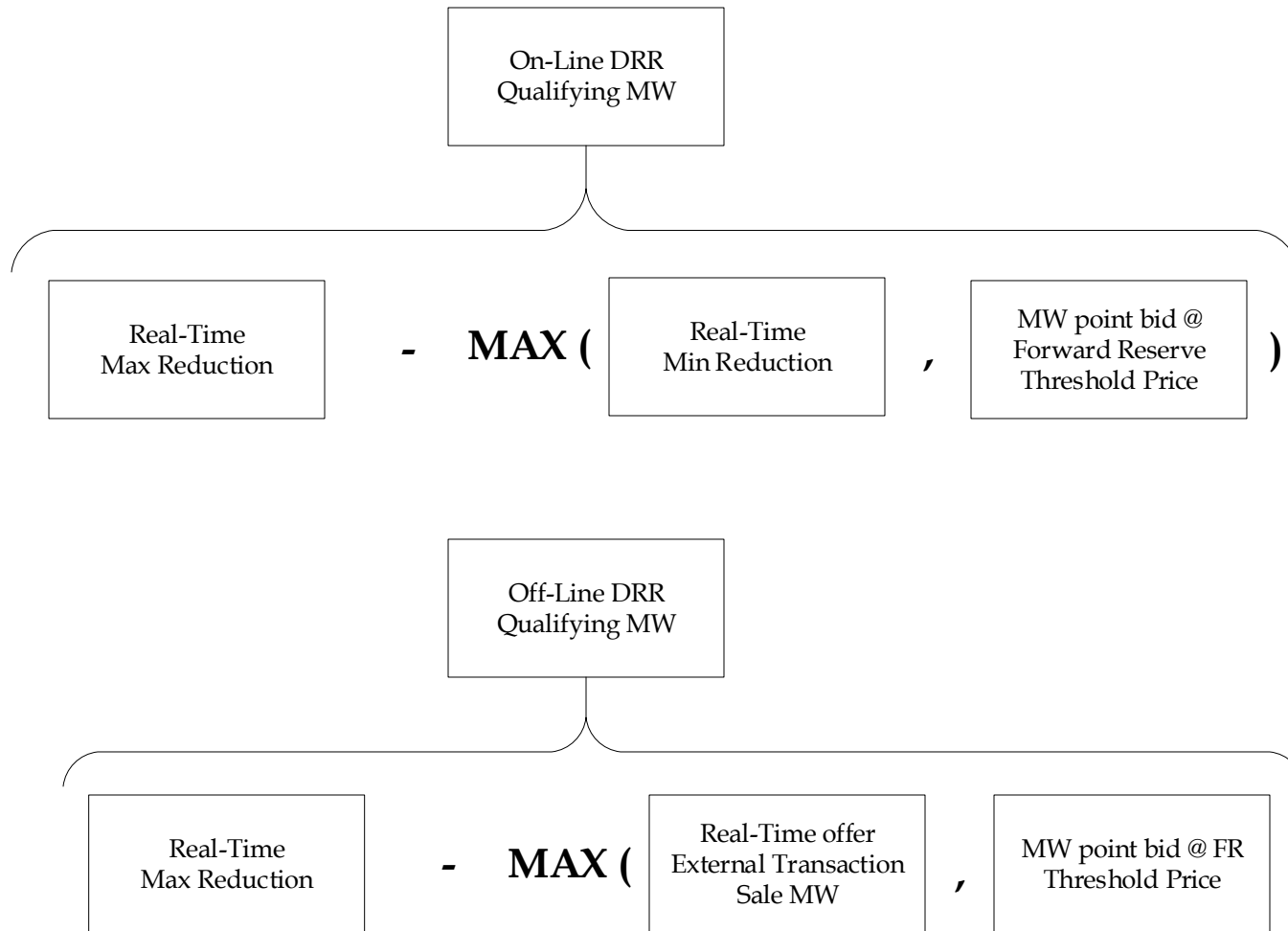


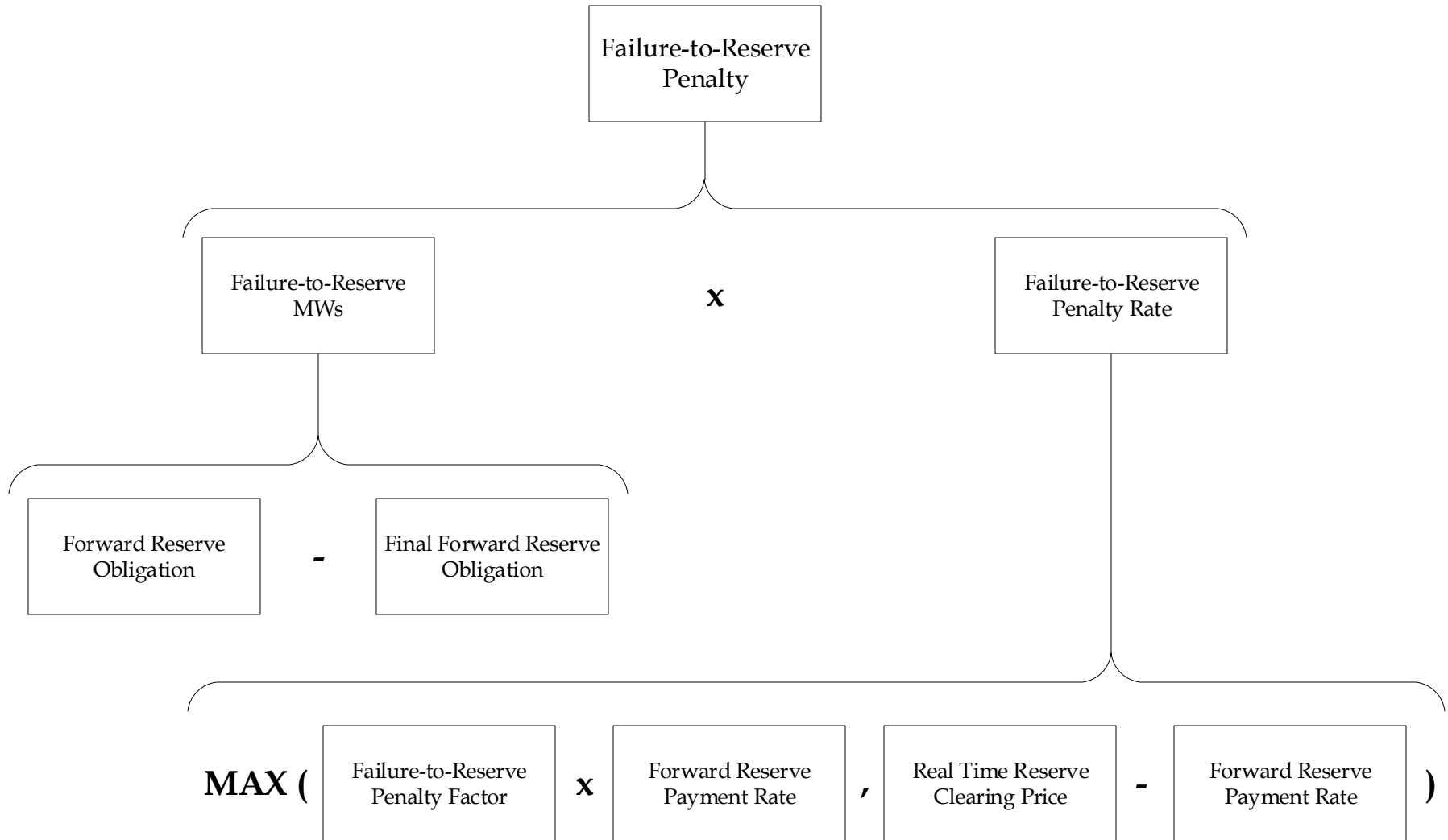


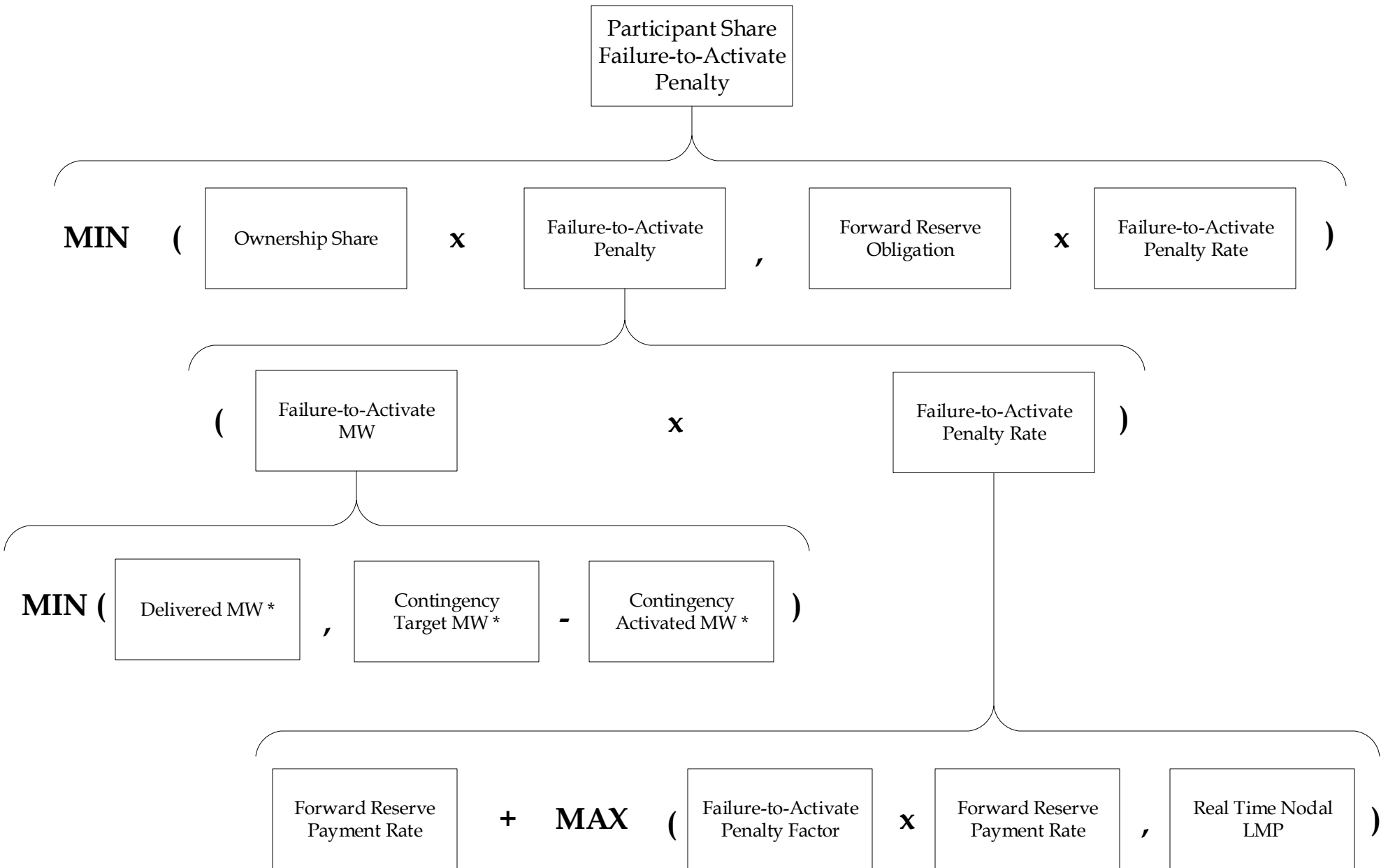
*The portion of Delivered MWs that is associated with Demand Reductions will be increased by the Pool Distribution Loss Factor (current value = 0.055, i.e. 1 + 0.055). The portion of Delivered MWs that is associated with Net Supply will not be increased by the Pool Distribution Loss Factor.



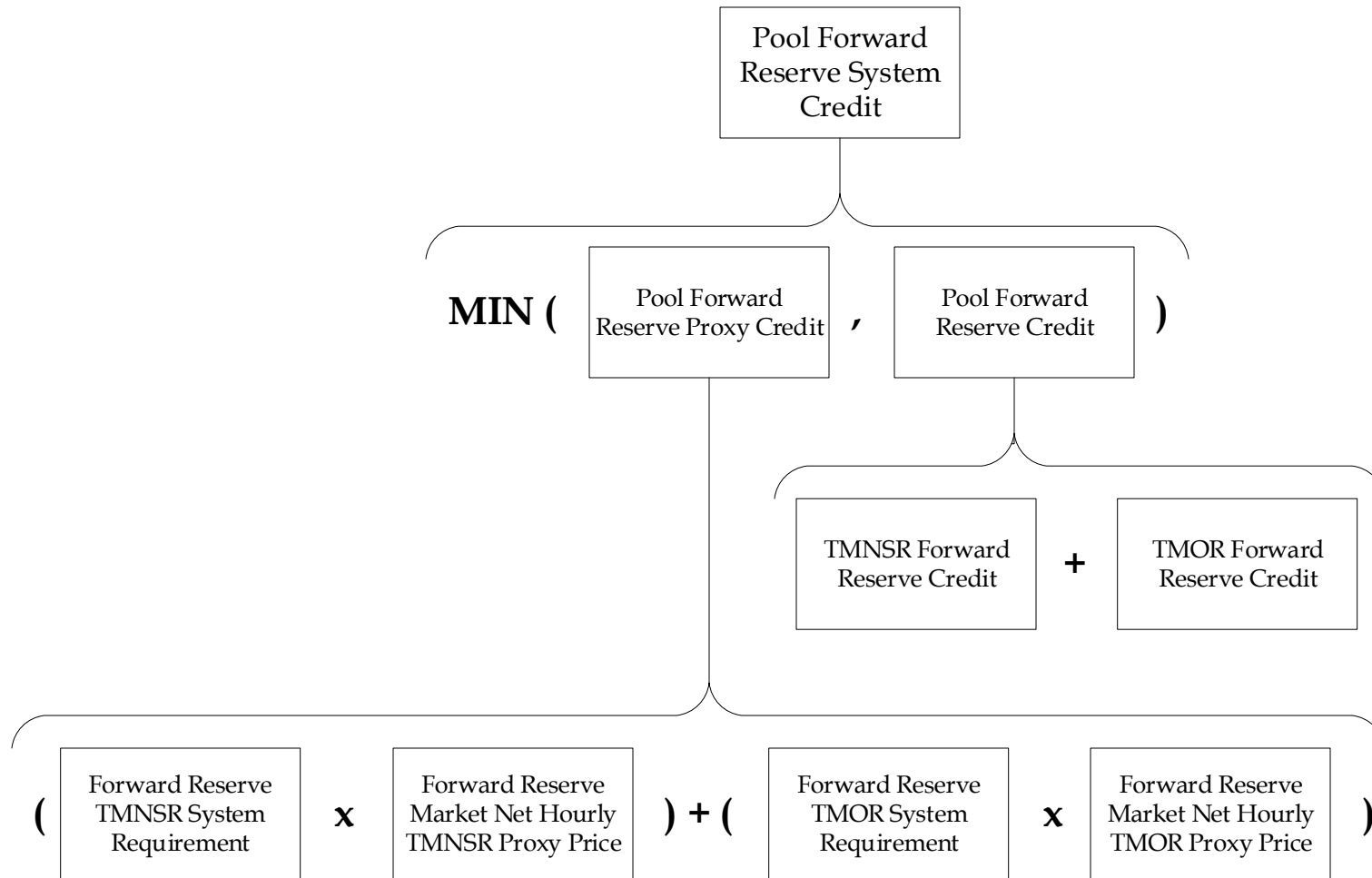


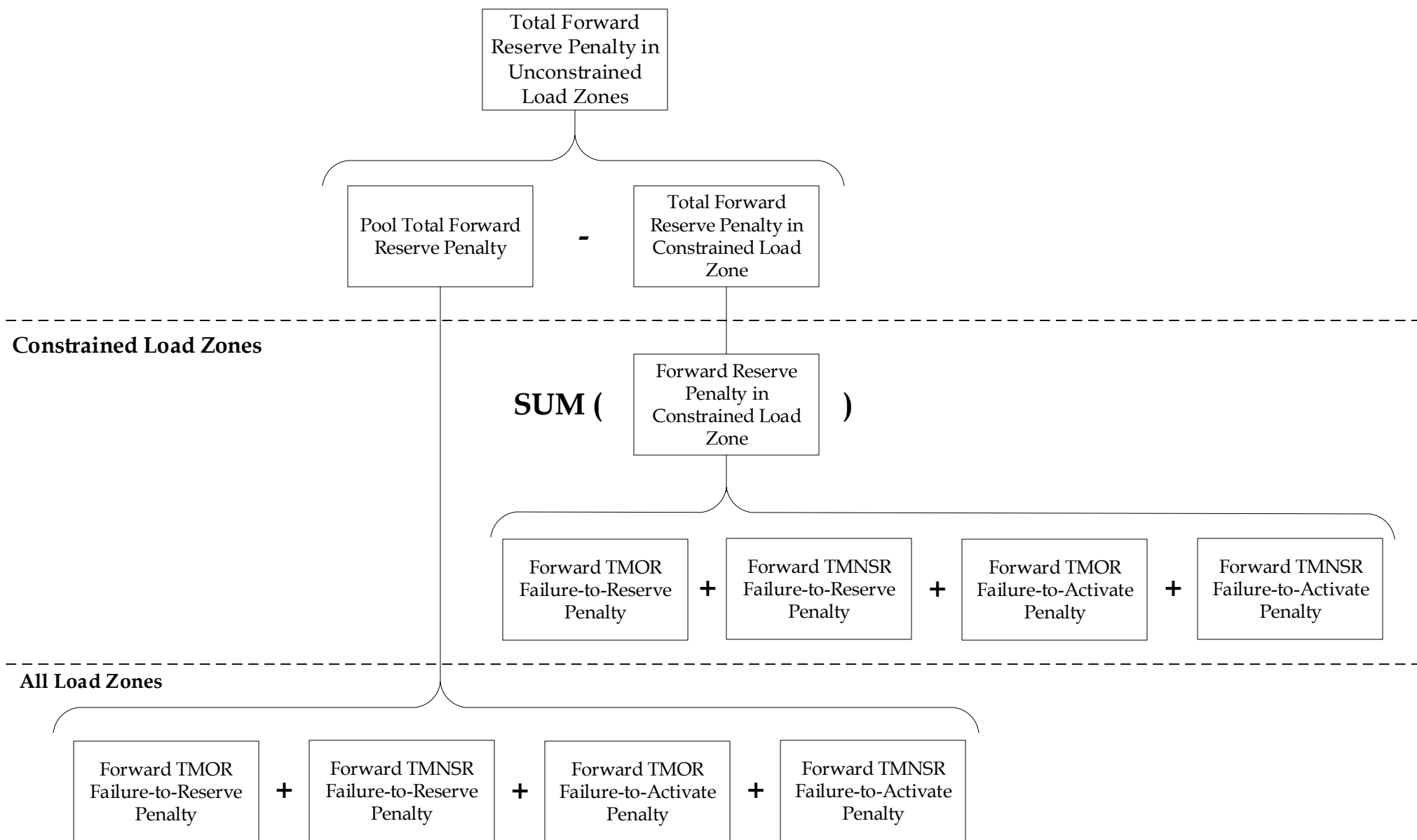


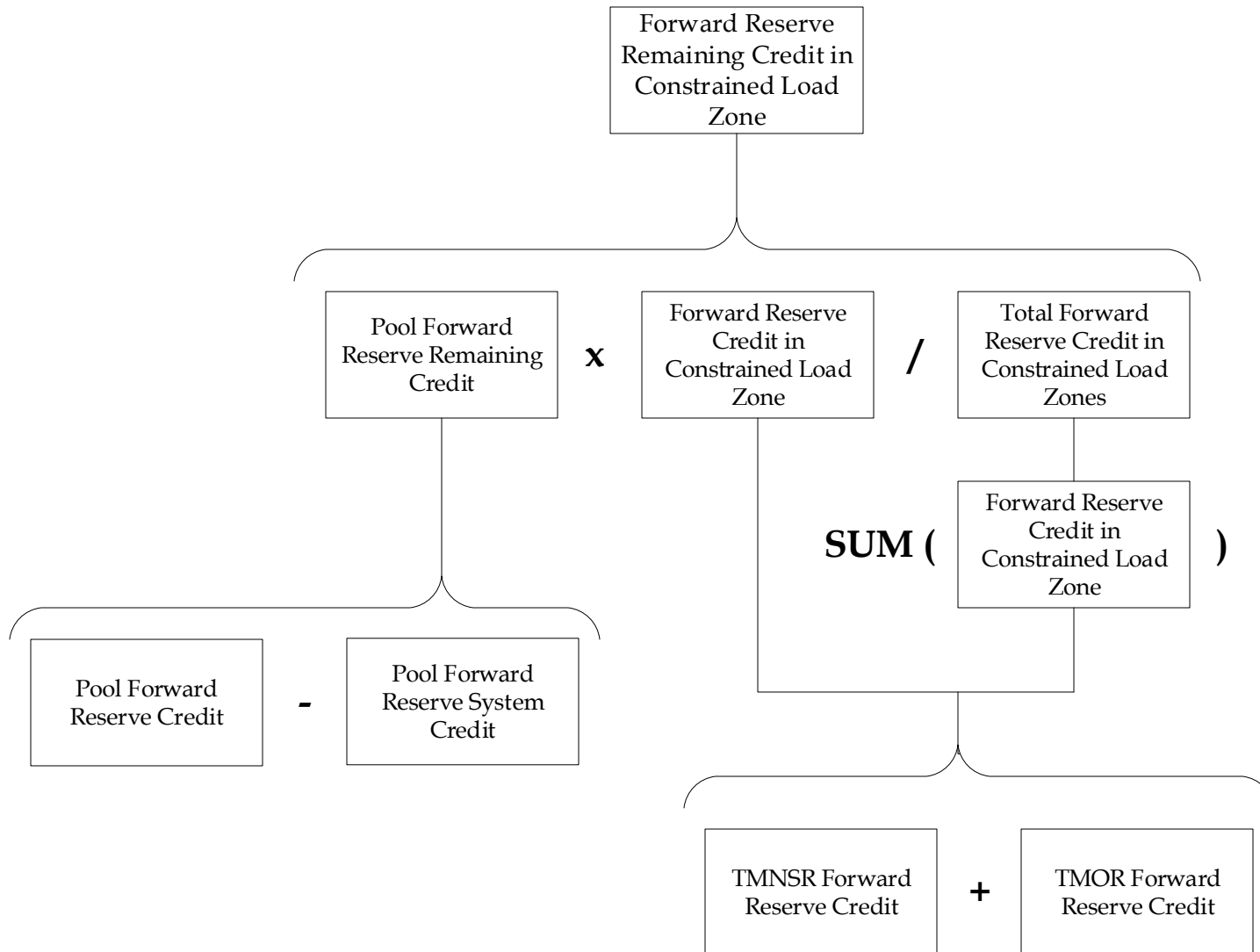


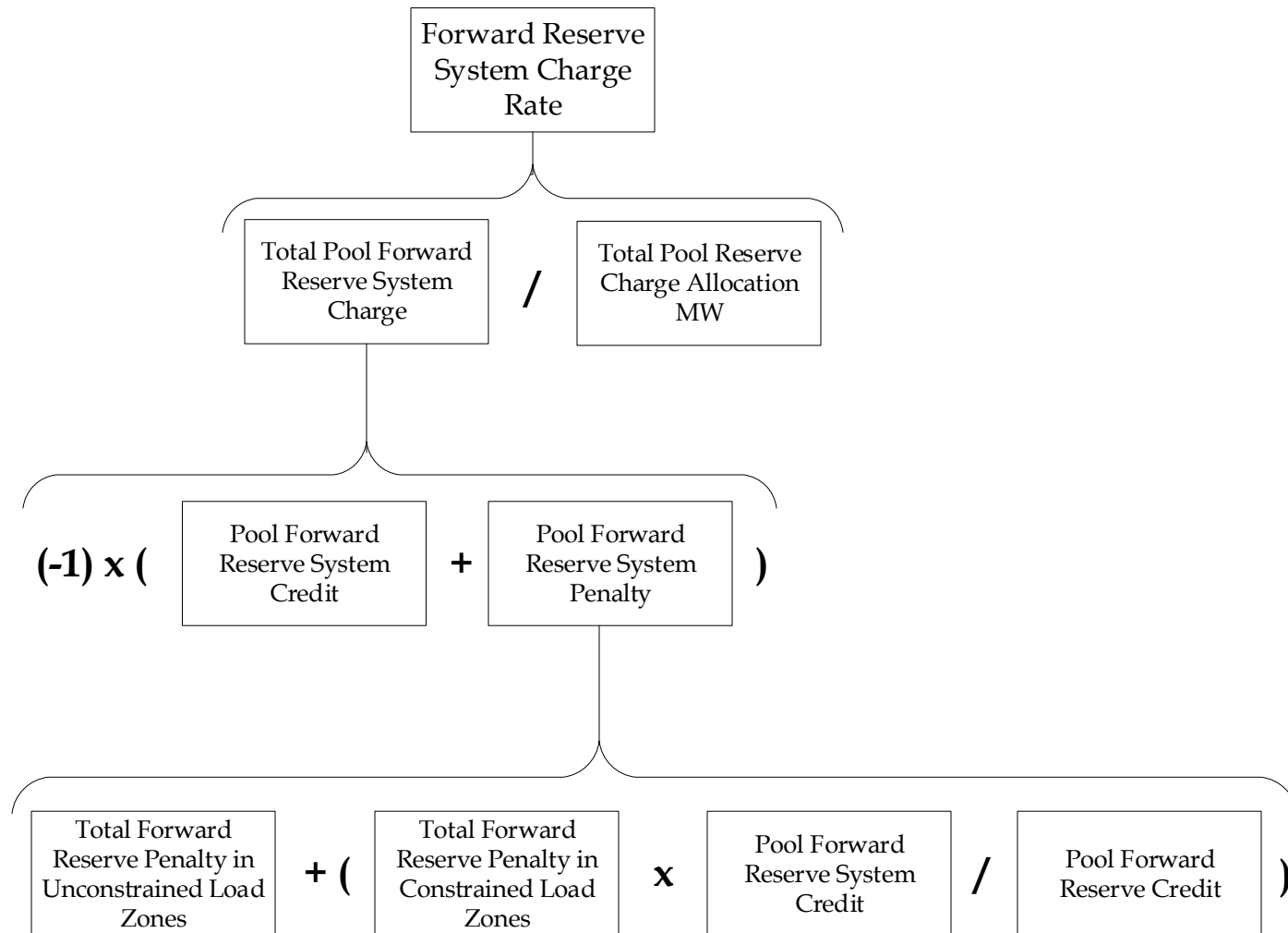


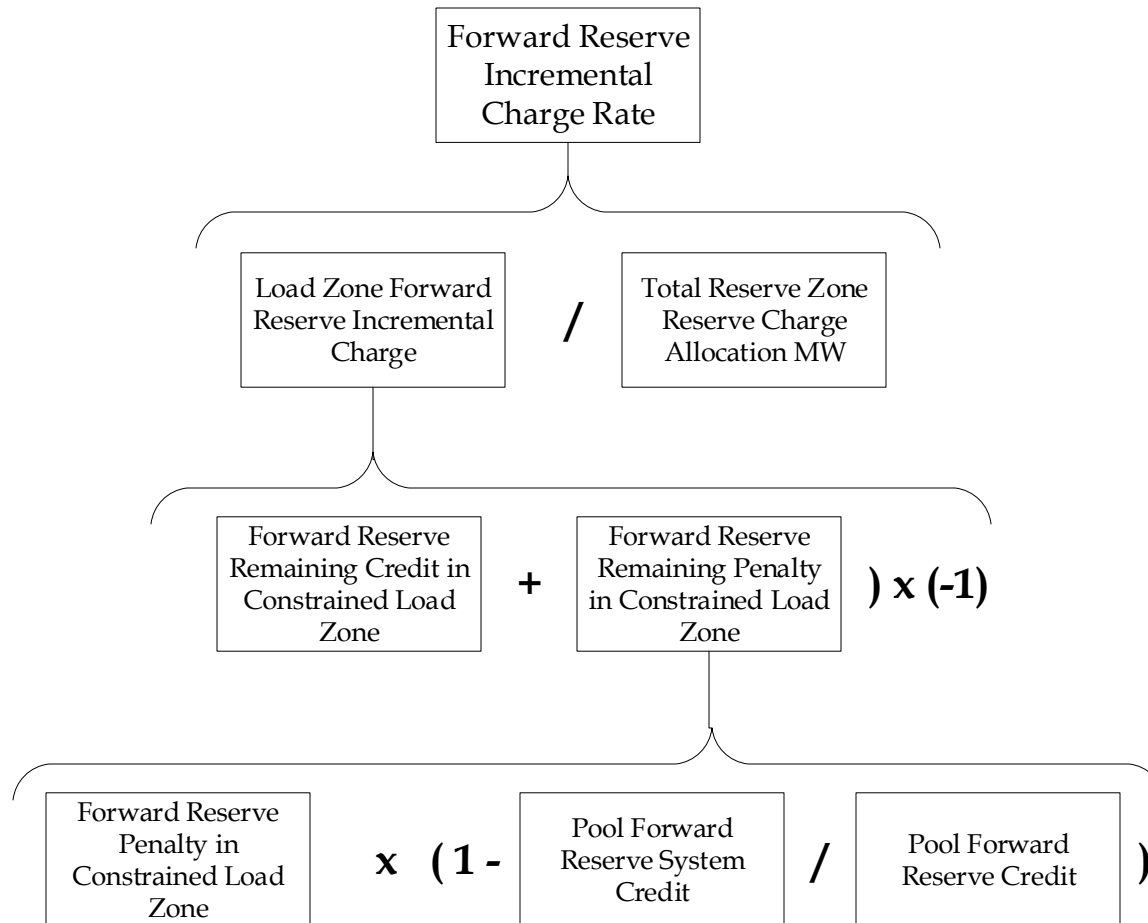
* For Demand Response Resources: the portion of MWs that is associated with Demand Reductions will be increased by the Pool Distribution Loss Factor (current value is 0.055, i.e. 1 + 0.055). The portion of MWs that is associated with Net Supply will not be increased by the Pool Distribution Loss Factor.

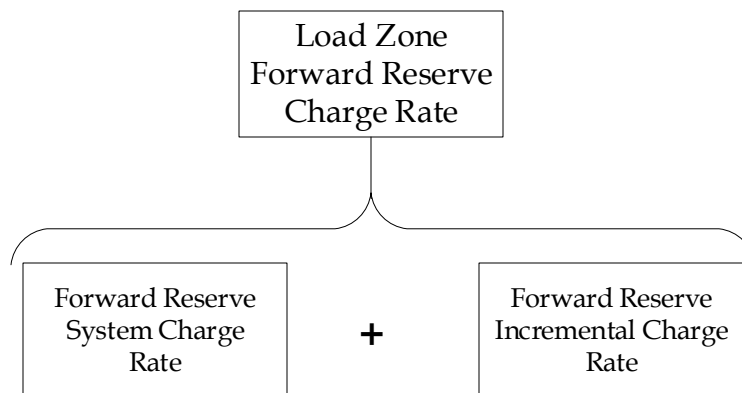




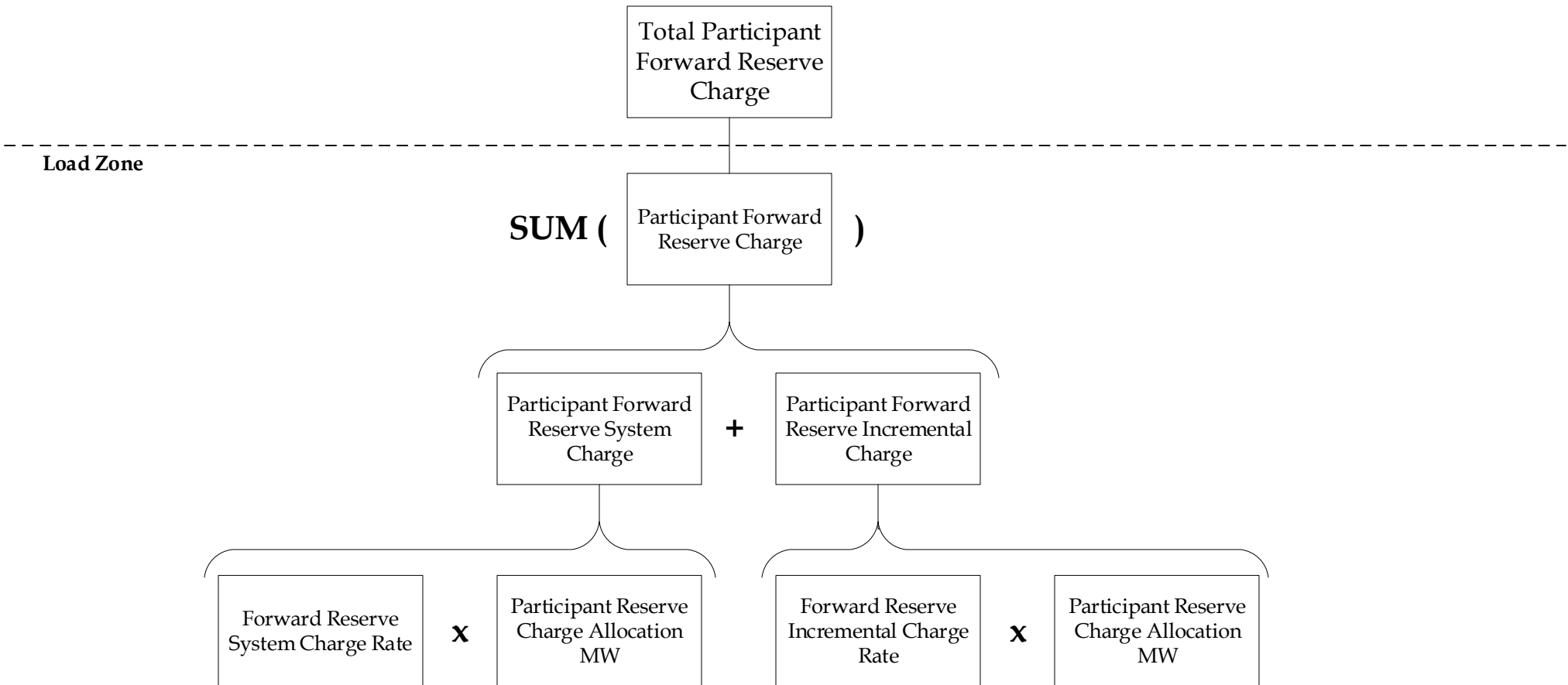


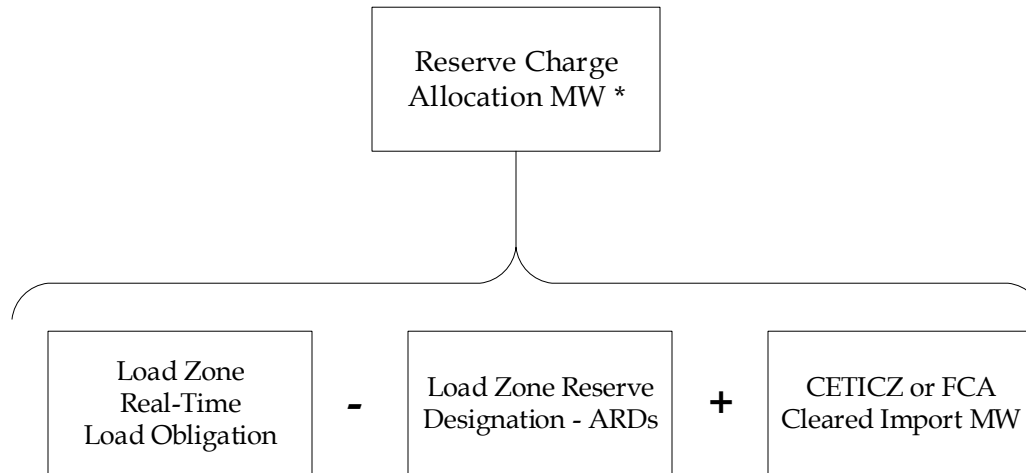






Note: Value of *Load Zone Forward Reserve Charge Rate* is calculated for informational purpose only and not used in charge allocation





* The above calculation applies to the following Reserve Charge Allocation types.

<u>Type</u>	<u>Description</u>
Total Pool Reserve Charge Allocation MW	Total Load Zone Reserve Charge Allocation MW
Participant Reserve Charge Allocation MW	Participant's Reserve Charge Allocation MW in a Load Zone
Total Reserve Zone Reserve Charge Allocation MW	Sum of all Load Zone Reserve Charge Allocation MW that are part of a constrained Reserve Zone

Note: The relevant ISO New England Markets, Services and Transmission Tariff and the relevant Market Manuals, Operating Procedures and Planning Procedures shall govern.

Revision History
ISO New England Calculation Summary

Version #	Modifier	Comments
1.0	ISO New England	Converted to New format.
2.0	ISO New England	Updated Forward Reserve Credit Calculation Summary
2.1	ISO New England	General Cleanup
3.0	ISO New England	Updated for PRD Settlement
4.0	ISO New England	Updated for ESD Release
4.1	ISO New England	General Cleanup