

Note: The relevant ISO New England Markets, Services and Transmission Tariff and the relevant Market Manuals, Operating Procedures and Planning Procedures shall govern.

Acronym	Definition
DBR	Designated Blackstart Resource
MVA	megavolt-ampere
O&M	Operations and Maintenance
Related Calculation Summaries	
Calculation Summary	Related Market
	intentionally blank
Related Market Information Server (MIS) and World-wide Web (WW) Reports	
Report Code	Report Long Name
sd_bscapitalpmt	Blackstart Capital Payment Detail
sd_bsopmaintpmt	Blackstart Operations and Maintenance Payment Detail
sd_bsstandardratepmt	Blackstart Standard Rate Payment Detail
sd_bsstationspecific	Blackstart Station-specific Rate Payment Detail
sd_bslumpsum	Blackstart Lump Sum Payment
sd_bsnondbrscpmt	Blackstart Non-DBR Study Costs Payment
sd_bsequipdamage	Blackstart Equipment Damage Reimbursement
sr_bspaymentssummary	Blackstart Payment Summary
sd_bscharge	Blackstart Service Charges
sr_bssettlementsum	Blackstart Settlement Summary
ww_appendixaSchedule16	Appendix A to Schedule 16

Note: The relevant ISO New England Markets, Services and Transmission Tariff and the relevant Market Manuals, Operating Procedures and Planning Procedures shall govern.

OATT Schedule 16 Blackstart - Customer Payment ISO New England Calculation Summary

Customer

Total
Blackstart Service
Payments_{month}
(\$/month)

Asset

(Blackstart Standard Rate Payment_{individual} (\$/month) + Blackstart Station-specific Rate Payment_{individual} (\$/month) + Non-DBR Study Cost Payments (\$/month) + Lump Sum Blackstart Payments_{individual} (\$/month) + Equipment Damage Reimbursement_{individual} (\$/month))

Note: The relevant ISO New England Markets, Services and Transmission Tariff and the relevant Market Manuals, Operating Procedures and Planning Procedures shall govern.

OATT Schedule 16 Blackstart - Standard Rate Payment ISO New England Calculation Summary

Asset, Customer

Blackstart
Standard Rate
Payment_{individual}
(\$/month)

Total Active Days
Blackstart
Standard Rate
Payment_{individual}
(\$/month)

X

Ownership
Share
(%)

/ 100

DBR -- Individual

(Total Active Days
Pro-rata O&M
Payment_{individual}
(\$/month)

+

) Total Active Days
Pro-rata Capital
Payment_{individual}
(\$/month)

Total
Blackstart O&M
Payment_{individual}
(\$/month)

X

Active
O&M
Days

/

Total Days in
Month

Total
Blackstart Capital
Payment_{individual}
(\$/month)

X

Active
Capital
Days

/

Total Days in
Month

Monthly
Blackstart O&M
Payment_{station}
(\$/month)

X

Designated
Blackstart
Resource_{individual}
nameplate MVA
value

/

Designated
Blackstart
Resource_{station}
nameplate MVA
value

Monthly
Blackstart Capital
Payment_{station}
(\$/month)

X

Designated
Blackstart
Resource_{individual}
nameplate MVA
value

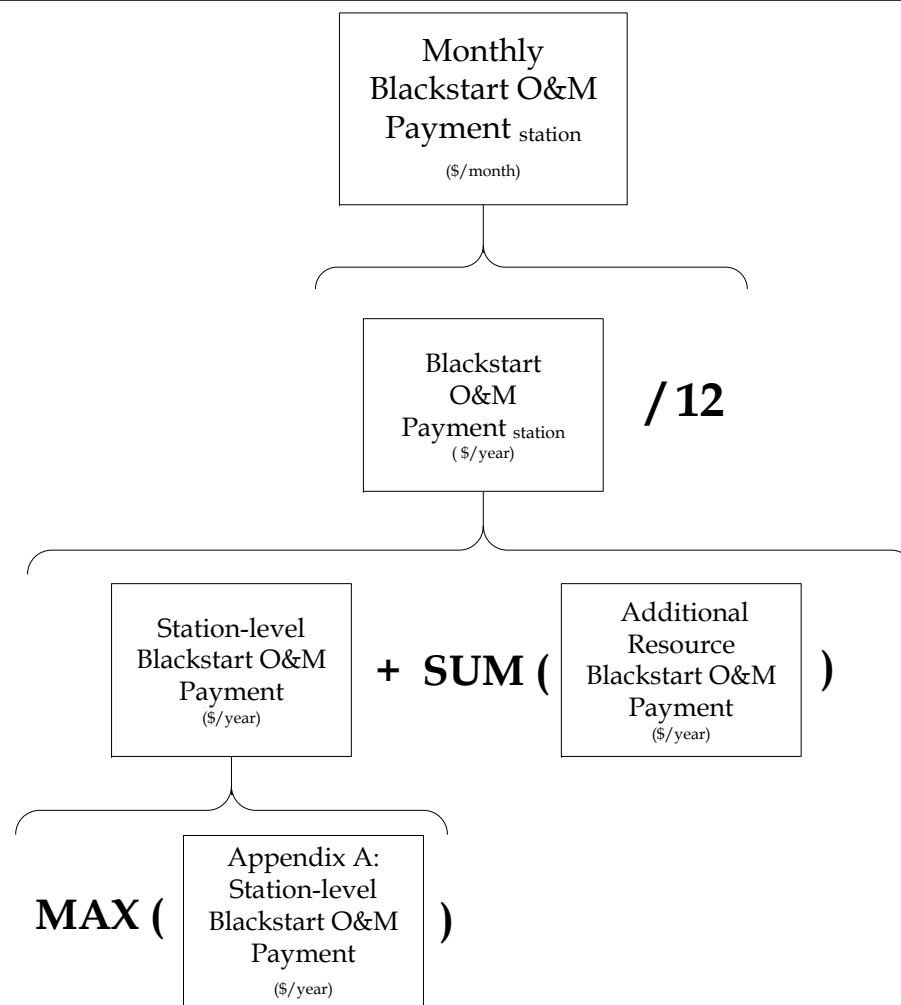
/

Designated
Blackstart
Resource_{station}
nameplate MVA
value

Note: The relevant ISO New England Markets, Services and Transmission Tariff and the relevant Market Manuals, Operating Procedures and Planning Procedures shall govern.

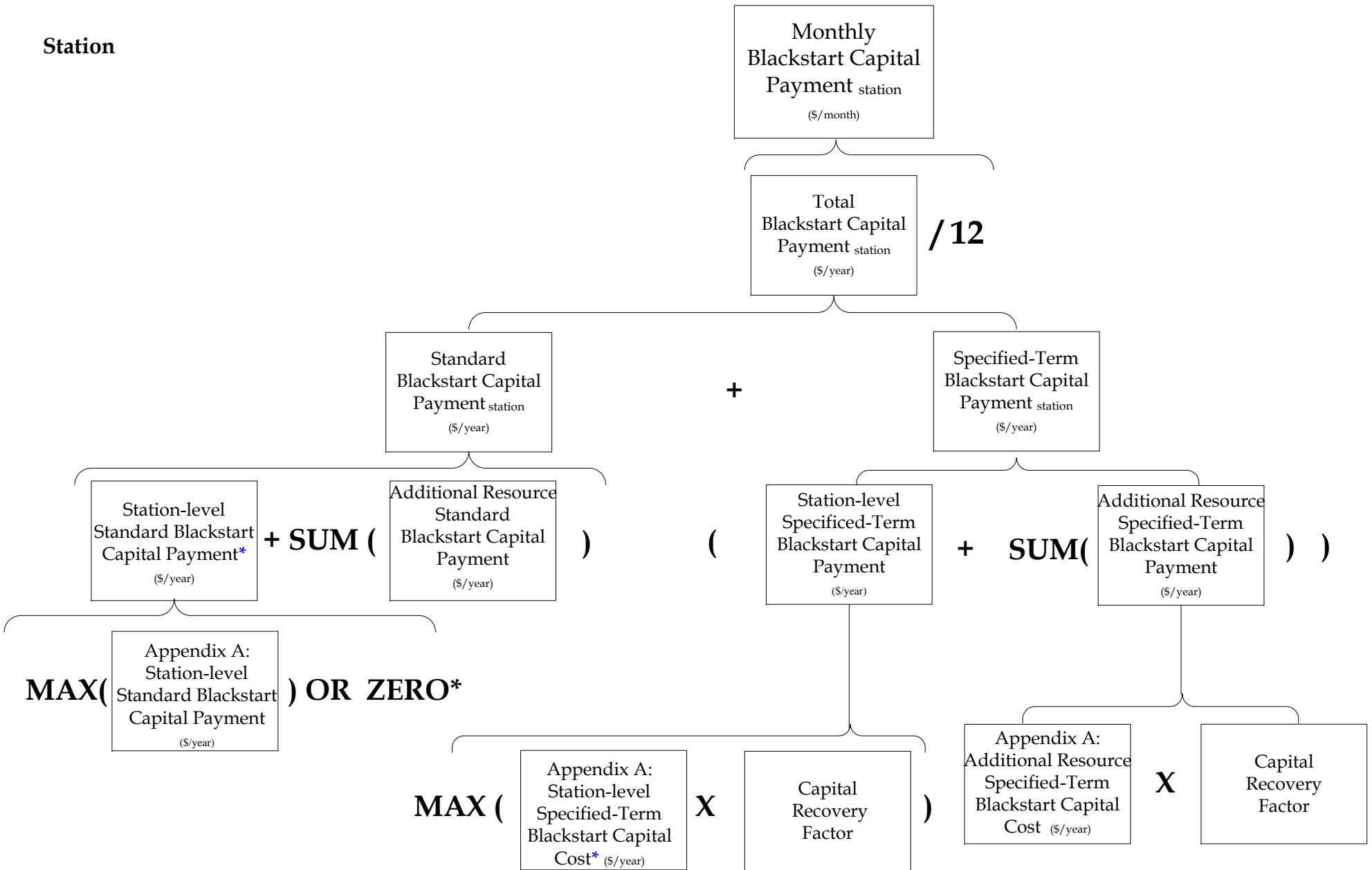
OATT Schedule 16 Blackstart - O&M Payment ISO New England Calculation Summary

Station



Note: The relevant ISO New England Markets, Services and Transmission Tariff and the relevant Market Manuals, Operating Procedures and Planning Procedures shall govern.

OATT Schedule 16 Blackstart - Capital Payment ISO New England Calculation Summary



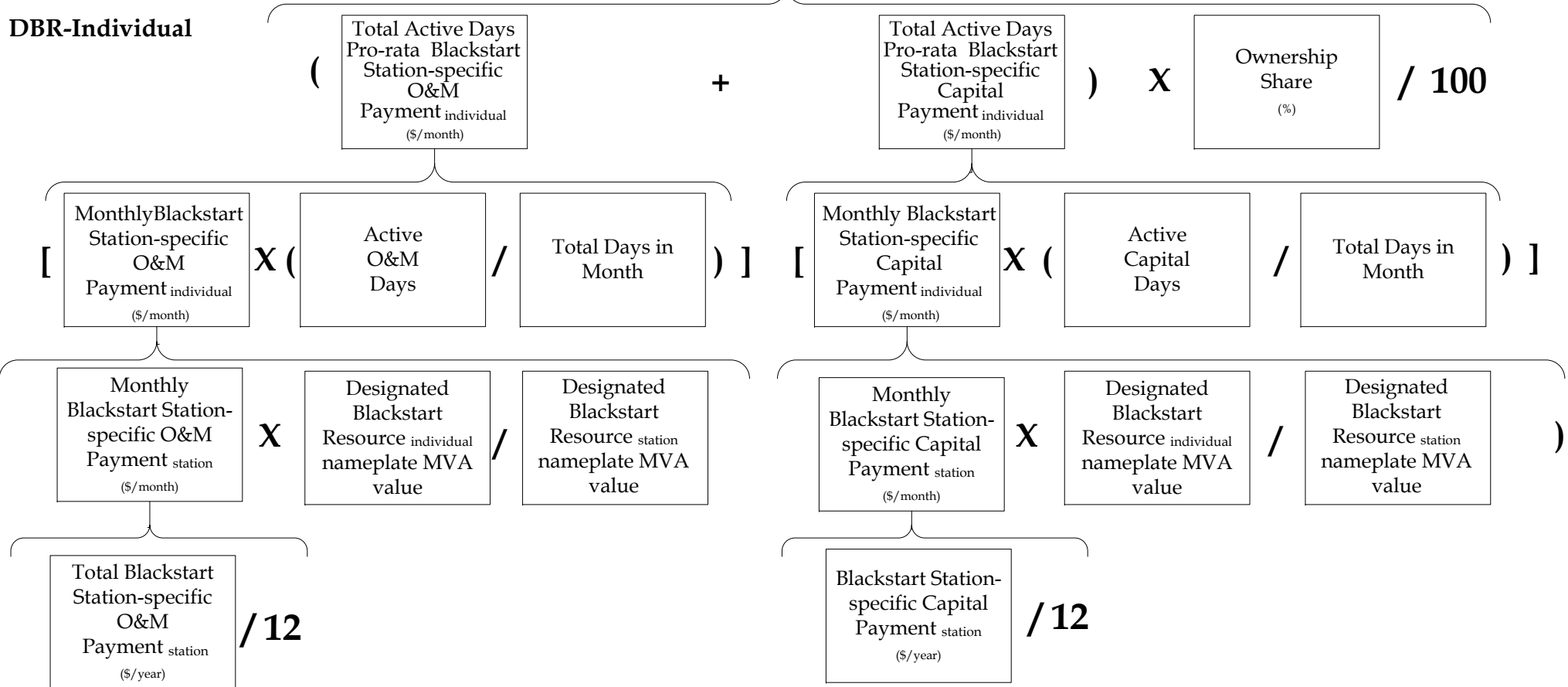
***If Station-level Specified -Term Blackstart Capital Payment > 0, then Station-level Standard Blackstart Capital Payment = 0**

Note: The relevant ISO New England Markets, Services and Transmission Tariff and the relevant Market Manuals, Operating Procedures and Planning Procedures shall govern.

Customer

Blackstart
Station-specific
Rate
Payment_{individual}
(\$/month)

DBR-Individual

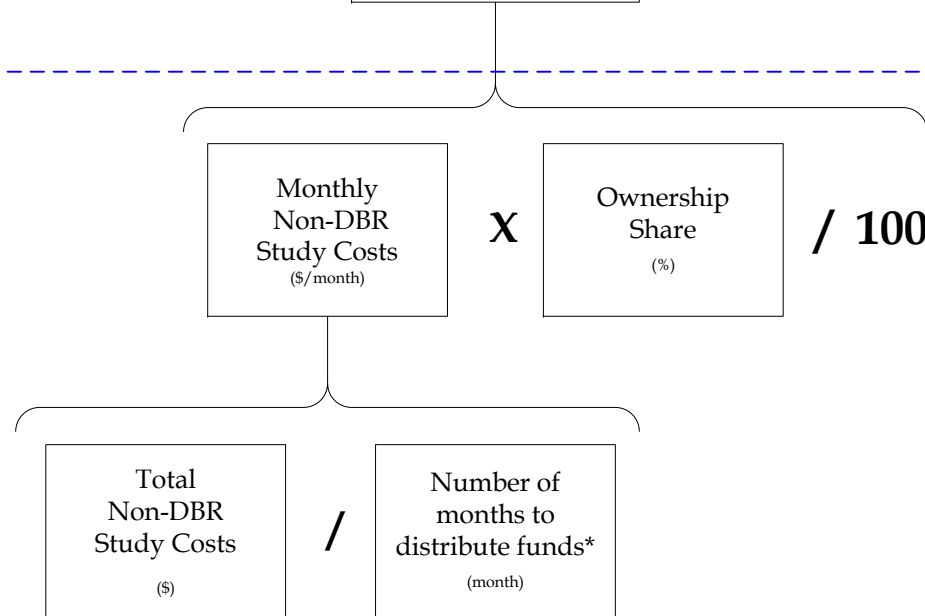


Note: The relevant ISO New England Markets, Services and Transmission Tariff and the relevant Market Manuals, Operating Procedures and Planning Procedures shall govern.

Customer

Non-DBR
Study Cost
Payments
(\$/month)

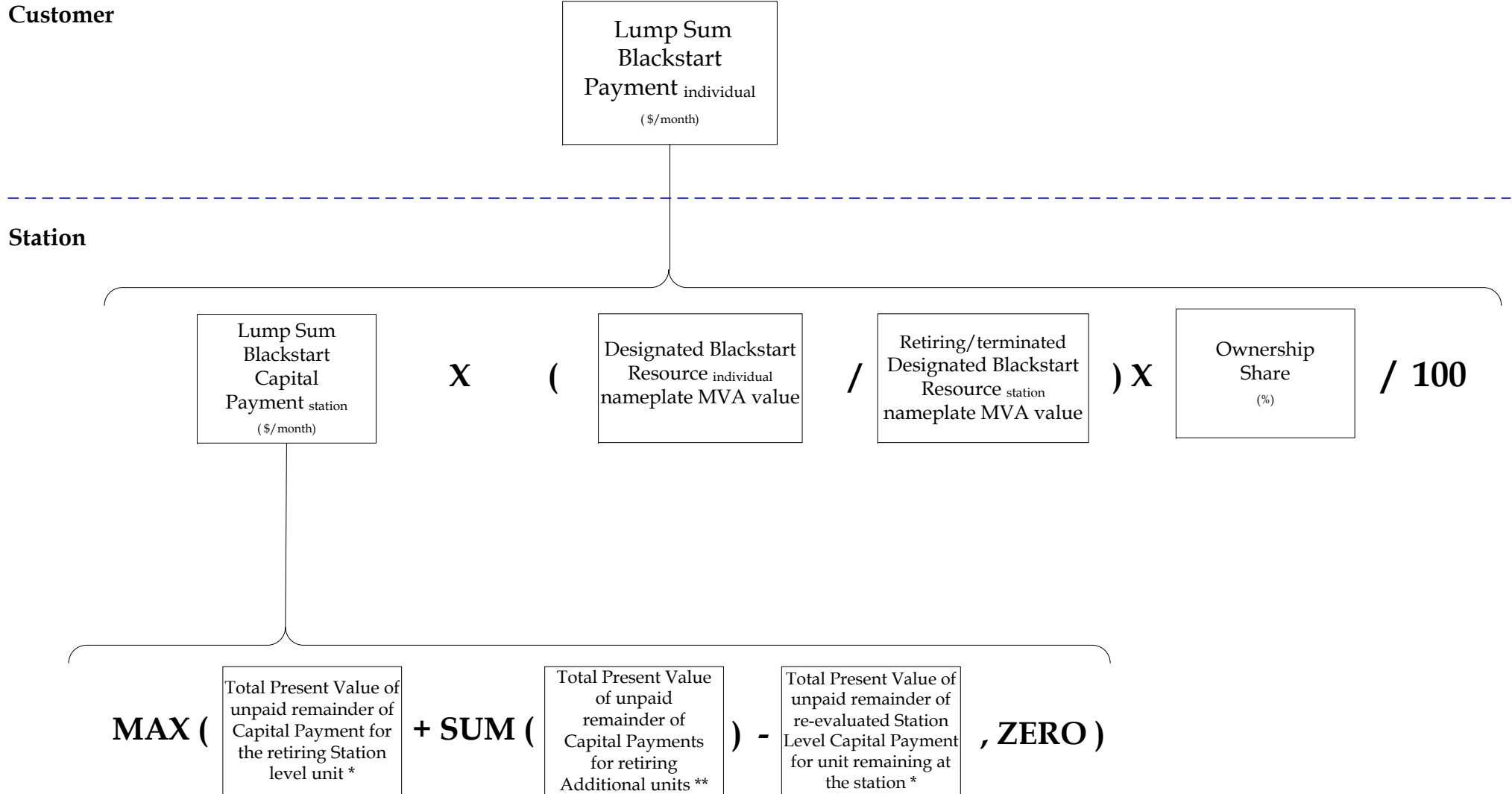
DBR-Individual



* Non-DBR Study Cost Payment is made in one monthly payment unless a 205 filing is made by the Participant.

Note: The relevant ISO New England Markets, Services and Transmission Tariff and the relevant Market Manuals, Operating Procedures and Planning Procedures shall govern.

OATT Schedule 16 Blackstart - Lump Sum Payment ISO New England Calculation Summary

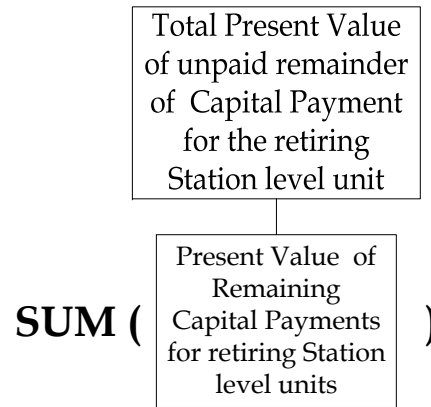


* Station Level Capital Payment must be associated with a minimum period open-term commitment or a specified-term commitment, otherwise zero.

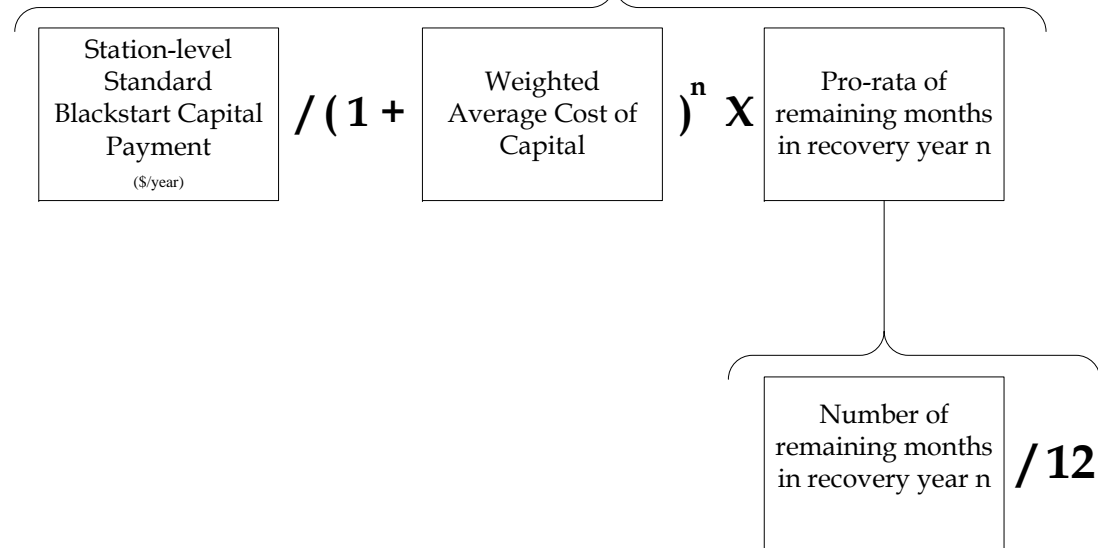
** Only calculated if there is a Station level unit retiring.

Note: The relevant ISO New England Markets, Services and Transmission Tariff and the relevant Market Manuals, Operating Procedures and Planning Procedures shall govern.

Present Value



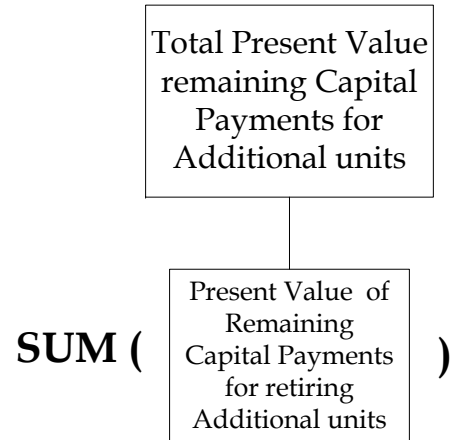
Present Value by Year



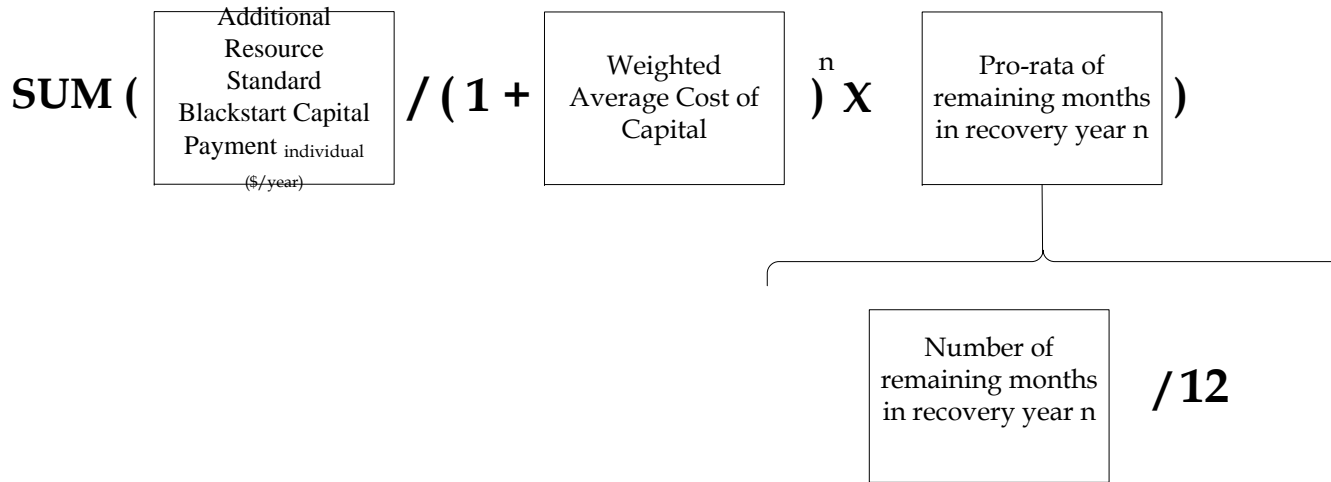
Note: n represents the year for which the calculation is performed i.e. year 1 = 1, year 2 = 2, year 3 = 3, etc.

Note: The relevant ISO New England Markets, Services and Transmission Tariff and the relevant Market Manuals, Operating Procedures and Planning Procedures shall govern.

Present Value



Present Value by Year



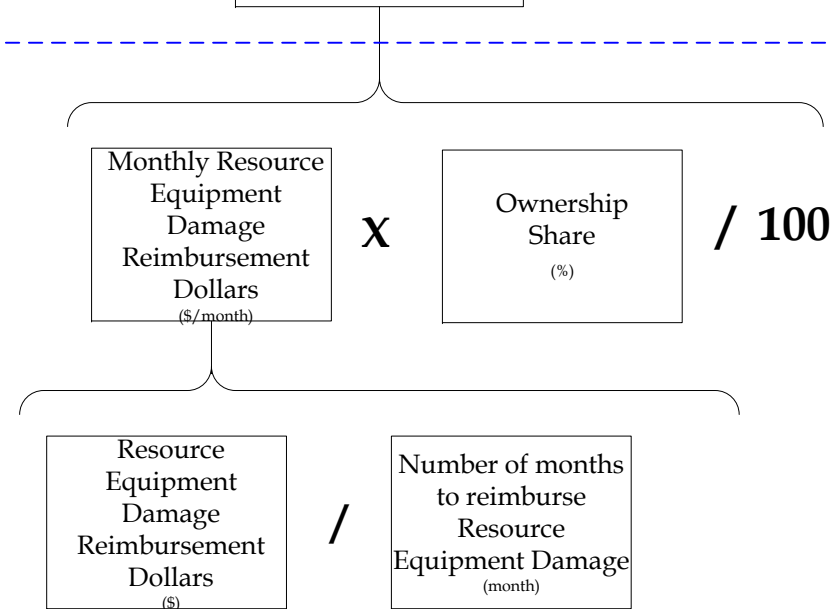
**Note: n represents the year for which the calculation is performed
I.e. year 1 = 1, year 2 = 2, year3=3, etc.**

Note: The relevant ISO New England Markets, Services and Transmission Tariff and the relevant Market Manuals, Operating Procedures and Planning Procedures shall govern.

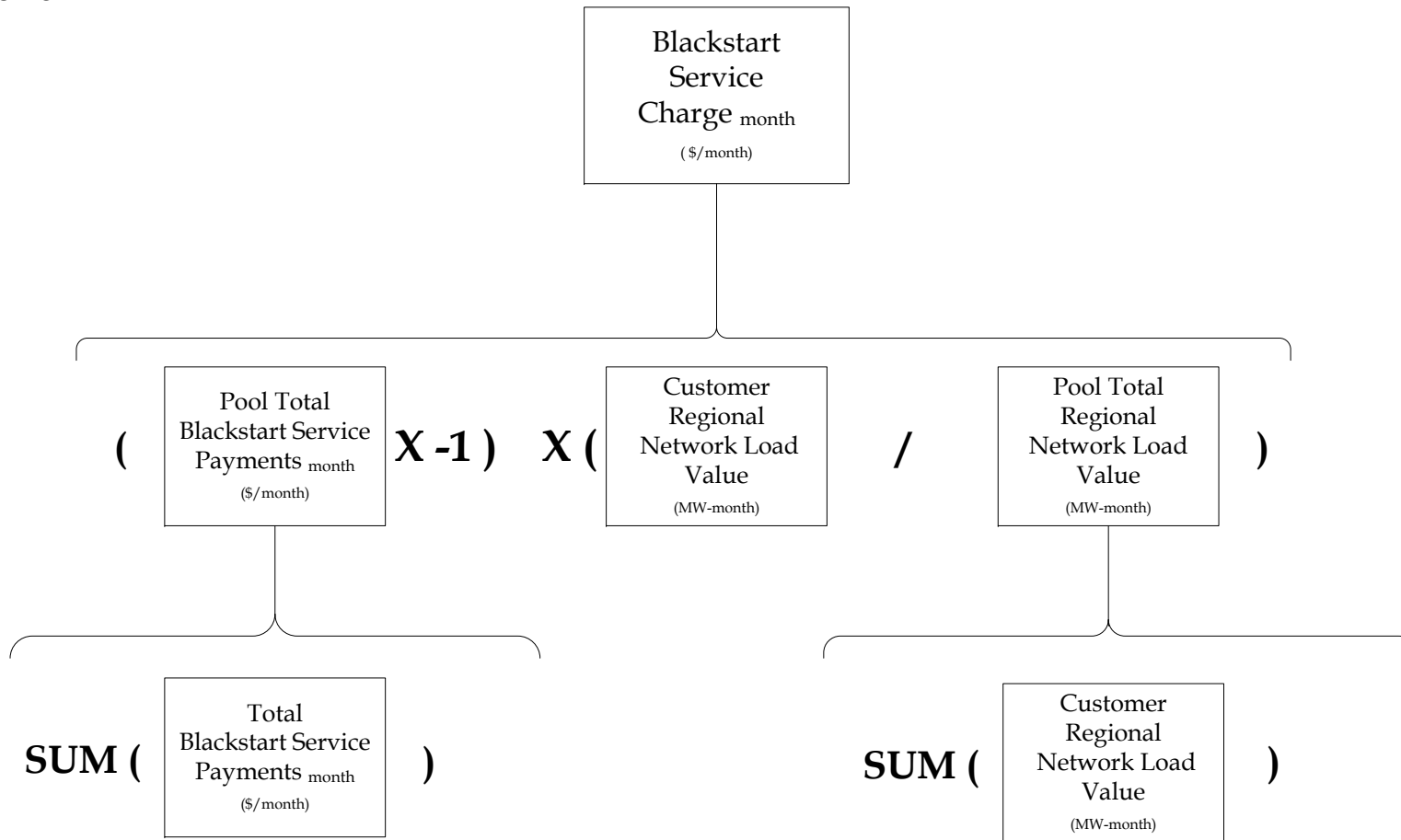
Customer

Equipment
Damage Reim-
bursement individual
(\$/month)

DBR -- Individual

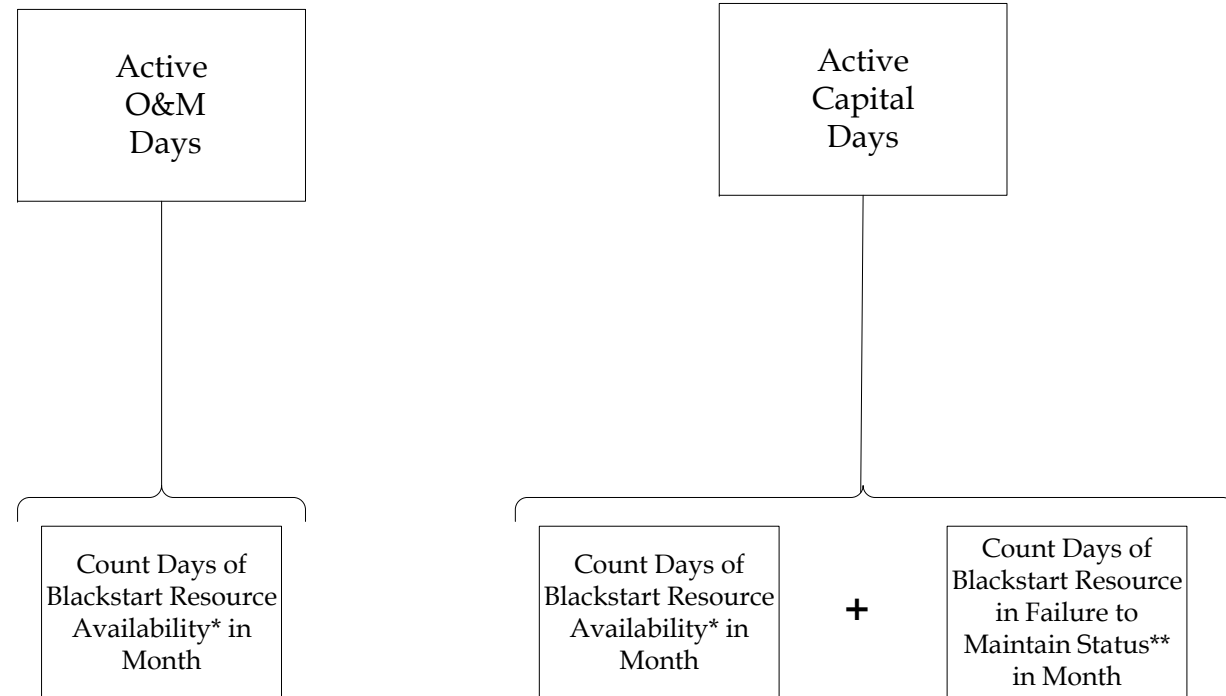


Customer



Note: The relevant ISO New England Markets, Services and Transmission Tariff and the relevant Market Manuals, Operating Procedures and Planning Procedures shall govern.

OATT Schedule 16 Blackstart - Active Days ISO New England Calculation Summary

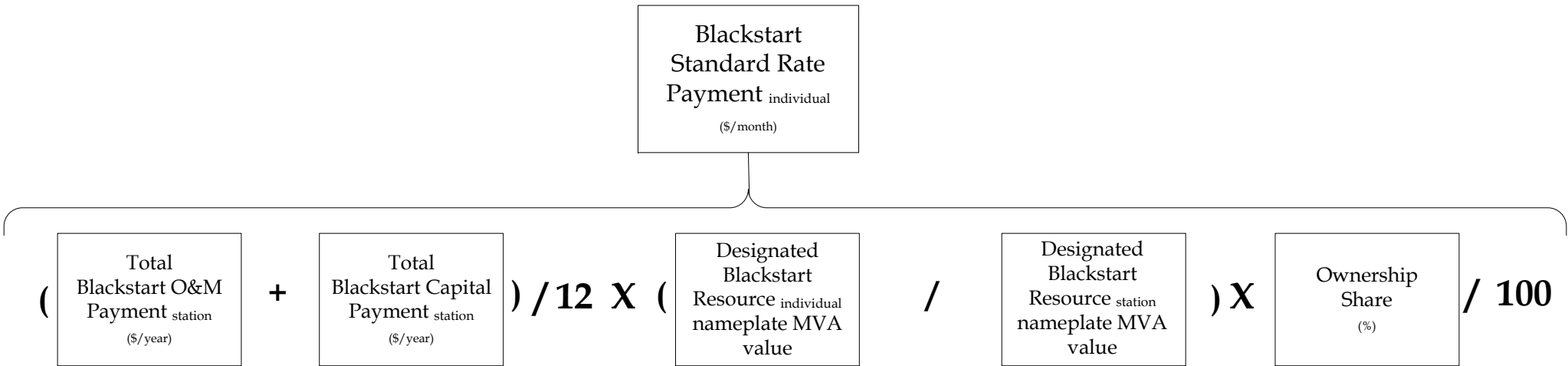


* Blackstart Resource Availability is the number of days in the month when a Blackstart Resource with a Blackstart commitment is not in Failure to Maintain, Failure to Perform Status (ie. Number of days where Compensation Status is not 'Capital Payment Only' or 'Not Compensated').

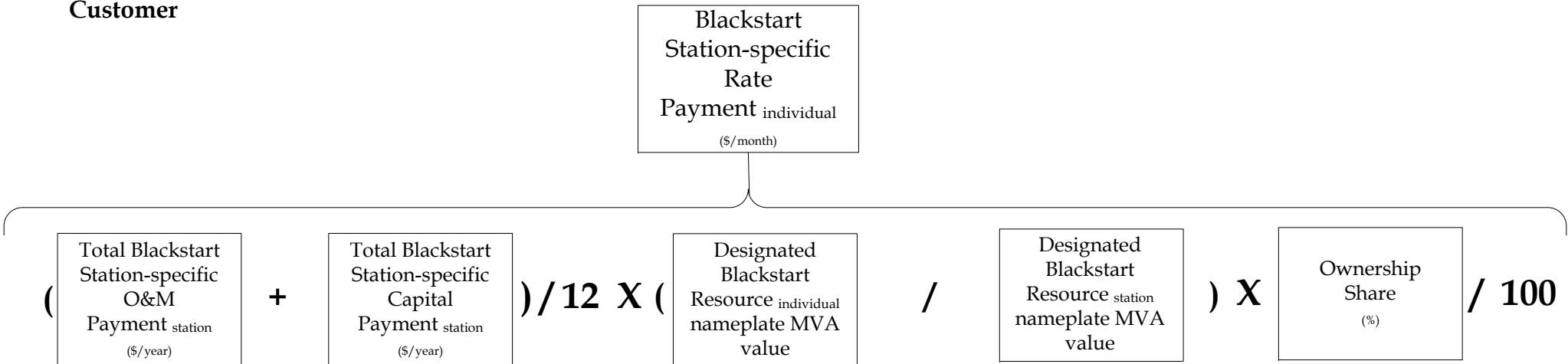
** Days in the month when Blackstart Resource is in Failure to Maintain Status where total failure days has not exceeded the 60 days from the date of Failure to Maintain or exceeded the correction date on the correction plan., (ie. Number of days where Compensation Status is 'Capital Payment Only'.)

Note: The relevant ISO New England Markets, Services and Transmission Tariff and the relevant Market Manuals, Operating Procedures and Planning Procedures shall govern.

Customer



Customer



Note: Simplified calculation where there are no suspension of payments

